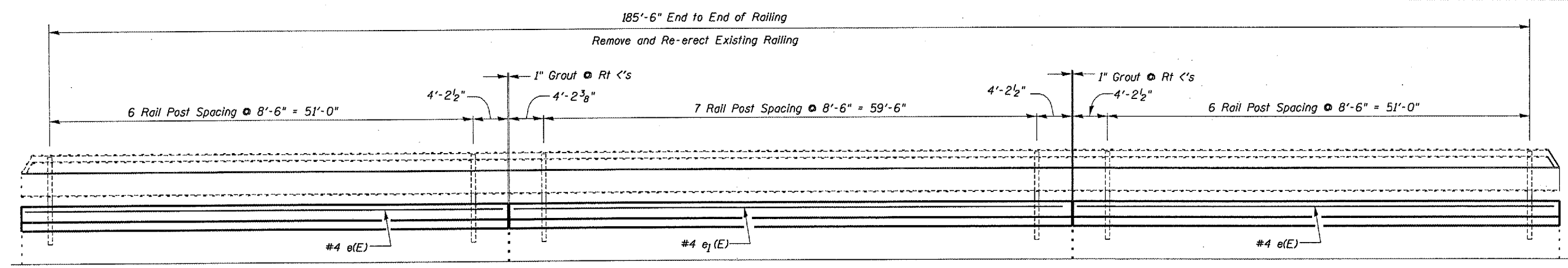
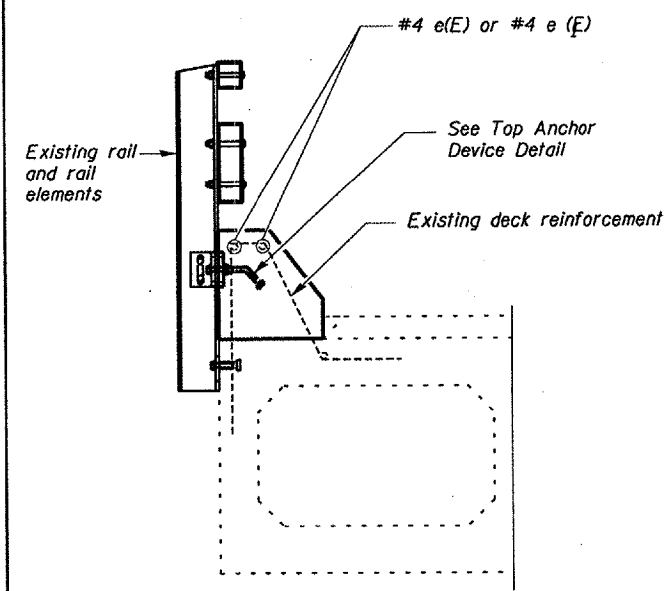


CONTRACT NO. 66614			
FAP RTE.	SECTION	COUNTY	TOTAL SHEETS
317	(25B-1)I	LIVINGSTON	21
SHEET NO.		13	
STA. 472+94.25		TO STA. 474+79.75	

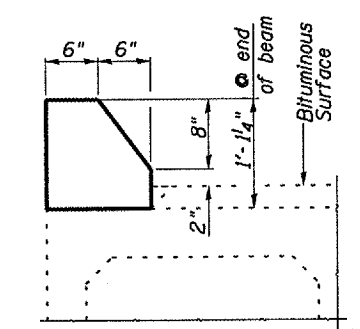


ELEVATION

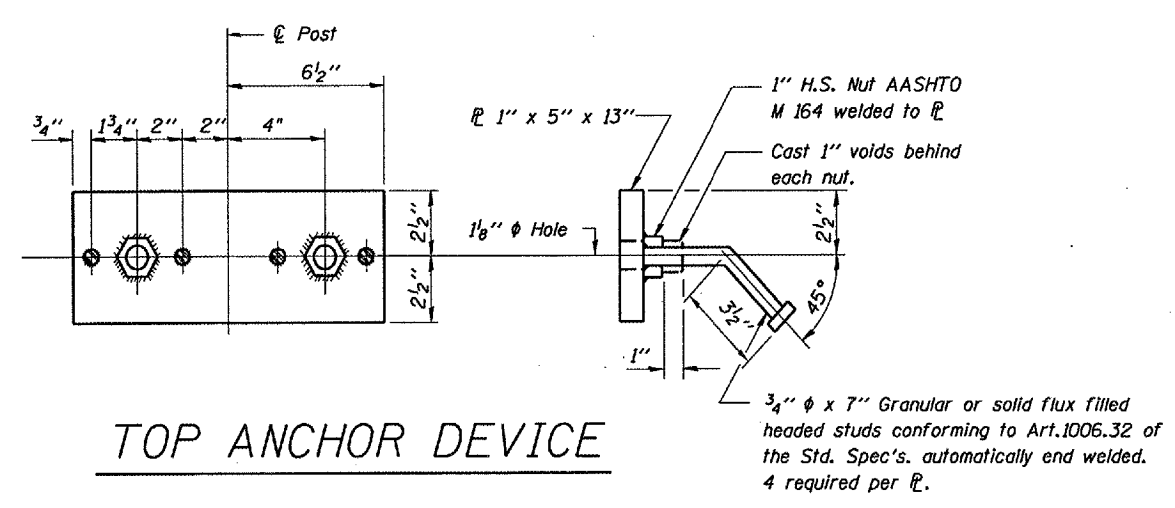


CURB SECTION

Cost of Top Anchor Device is included in the cost of Remove and Re-erect Existing Bridge Rail.



CURB SECTION DIMENSIONS

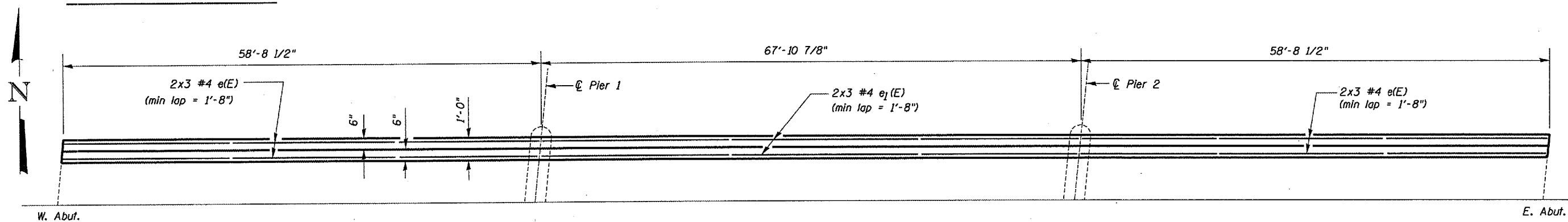


TOP ANCHOR DEVICE

BILL OF MATERIALS FOR ONE CURB

Bar	No.	Size	Length	Shape
e(E)	12	#4	20'-9"	—
e ₁ (E)	6	#4	23'-9"	—
Concrete Removal			Cu Yd	5.7
Concrete Superstructure			Cu Yd	5.7
Reinforcement Bars, Epoxy Coated			Pound	262

Reinforcement bars designated (E) shall be epoxy coated.



PLAN

REVISIONS	
NAME	DATE

ILLINOIS DEPARTMENT OF TRANSPORTATION
PROPOSED CURB DETAILS
 FAP ROUTE 317 SECTION (25B-1)I
 LIVINGSTON COUNTY
 STA. 473+87
 DATE 09/21/2005 DRAWN BY RW

DATE: 09/21/2005
 FILE: c:\projects\main06\cm322\details.dgn