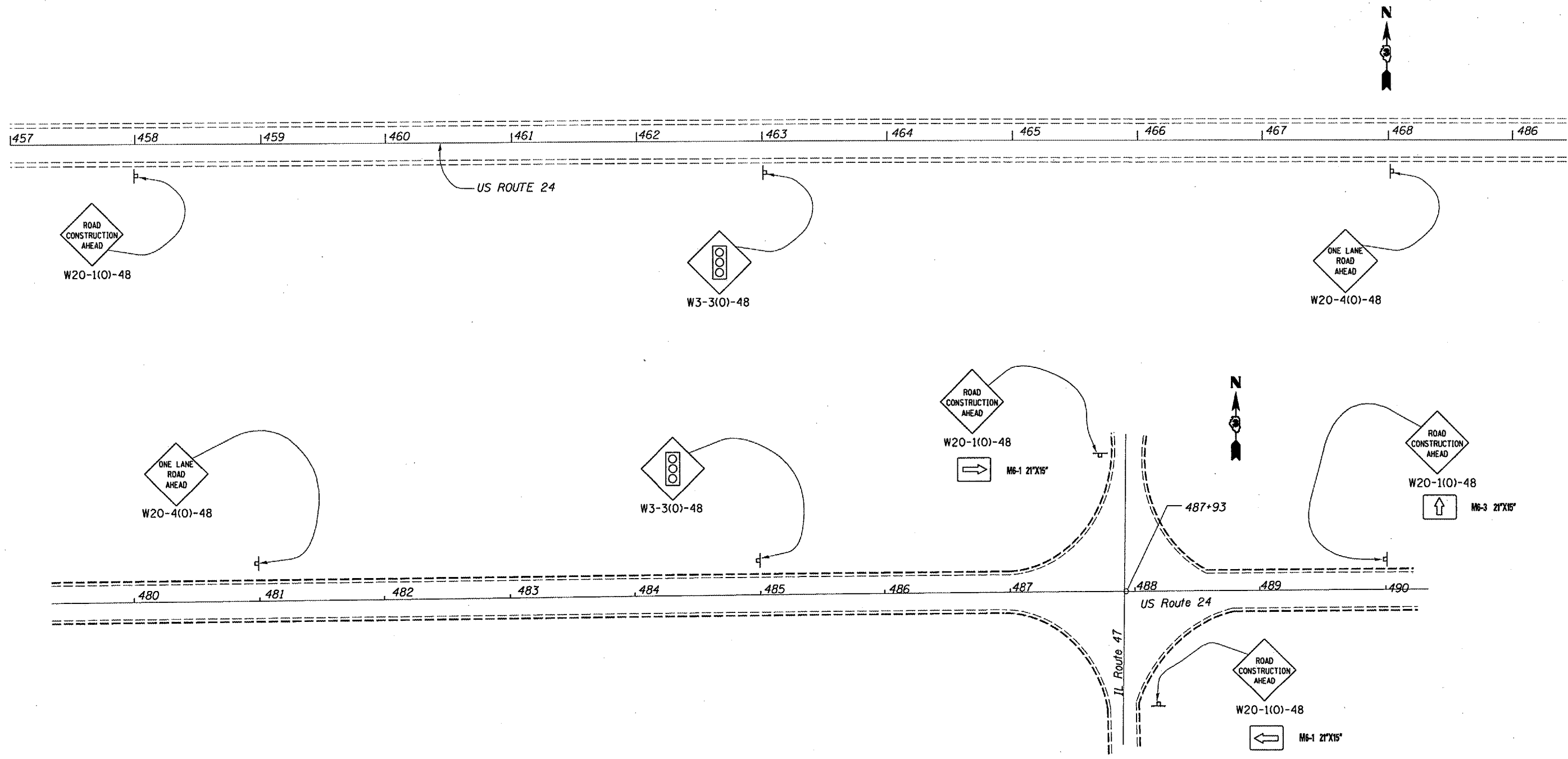


FAP RTE.	SECTION	COUNTY	TOTAL SHEETS	SHEET NO.
317	(25B-1)I	LIVINGSTON	21	18
STA. 472+94.25 TO STA. 474+79.75				



DATE: 09/27/2005
FILE: c:\projects\cma06\cm322\detaila.dgn

REVISIONS	
NAME	DATE

ILLINOIS DEPARTMENT OF TRANSPORTATION
TRAFFIC CONTROL PLAN FOR
STAGE I CONSTRUCTION - ADVANCED SIGNING
FAP ROUTE 317 SECTION (25B-1)I
LIVINGSTON COUNTY
STA. 473+87

DATE 09/27/2005 DRAWN BY RW