

F.A.I. RTE.	SECTION	COUNTY	TOTAL SHEETS	SHEET NO.
57	(27-38)I-1 & (27-1)I-2	FORD	14	1
ILLINOIS				

D-93-002-06



LOCATION OF SECTION INDICATED THUS: - -

FUNCTIONAL CLASSIFICATION
 RURAL: INTERSTATE
 FAI ROUTE 57
 2005 ADT = 16500
 P.V = 66.9% M.U. = 28.4% S.U. = 4.5%

STATE OF ILLINOIS
 DEPARTMENT OF TRANSPORTATION
 DIVISION OF HIGHWAYS

SUBMITTED 5/16 2006

Angus L. Alonzo
 DEPUTY DIRECTOR OF HIGHWAYS, REGION ENGINEER

June 30 2006
J. Mike Lane
 ENGINEER OF DESIGN AND ENVIRONMENT

June 30 2006
Michael R. Sees, P.E.
 DIRECTOR OF HIGHWAYS, CHIEF ENGINEER

**PRINTED BY THE AUTHORITY
 OF THE STATE OF ILLINOIS**

STATE OF ILLINOIS
 DEPARTMENT OF TRANSPORTATION
 DIVISION OF HIGHWAYS

**PROPOSED
 HIGHWAY PLANS**

FAI ROUTE 57 (I-57)
 SECTION (27-38)I-1 & (27-1)I-2
 PROJECT
 FORD COUNTY
 PAVEMENT PATCHING
 C-93-073-06

INDEX OF SHEETS

1. COVER SHEET
2. GENERAL NOTES
- 3 - 4. SUMMARY OF QUANTITIES
5. TYPICAL SECTIONS
- 6 - 7. PATCHING SCHEDULES
8. SCHEDULES AT S.N. 027-0048
9. EXISTING PLAN DETAILS AT S.N. 027-0048
10. PROPOSED PLAN DETAILS AT S.N. 027-0049
11. CLASS A PATCHING DETAILS
12. SHOULDER RUMBLE STRIP DETAIL
13. TRAFFIC CONTROL AND PROTECTION, STANDARD 701402 (SPECIAL)
14. TYPICAL PAVEMENT MARKINGS

STANDARDS

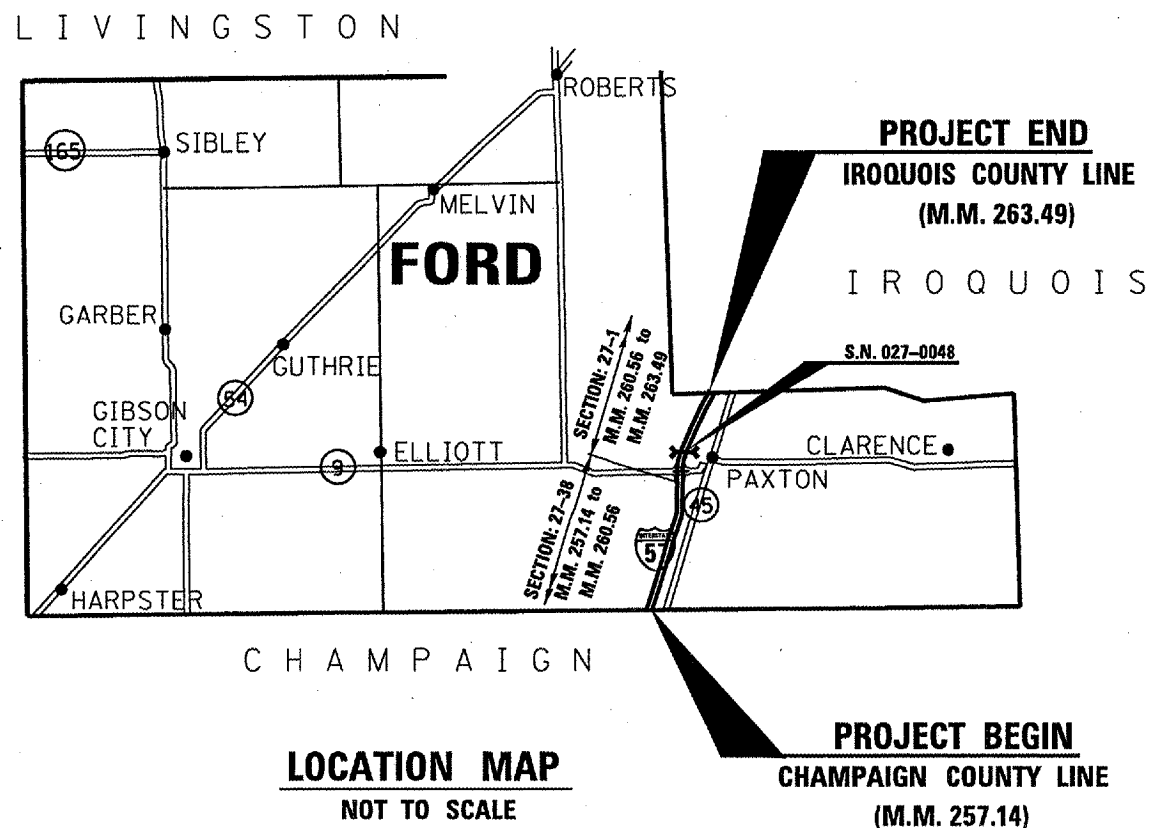
- | | |
|-----------|---|
| 000001-04 | STANDARD SYMBOLS, ABBREVIATIONS AND PATTERNS |
| 001001 | AREAS OF REINFORCEMENT BARS |
| 001006 | DECIMAL OF AN INCH AND OF A FOOT |
| 420001-06 | PAVEMENT JOINTS |
| 421001-01 | BAR REINFORCEMENT FOR CRC PAVEMENT |
| 442001-02 | CLASS A PATCHES |
| 482006-01 | BITUMINOUS SHOULDER ADJACENT TO RIGID PAVEMENT |
| 635011-01 | REFLECTOR MARKER AND MOUNTING DETAILS |
| 701101-01 | OFF-ROAD OPERATIONS MULTILANE, 4.5 m (15') TO 600 mm (24") FROM PAVEMENT EDGE |
| 701106-01 | OFF-ROAD OPERATIONS, MULTILANE, MORE THAN 4.5 m (15') AWAY |
| 701400-02 | APPROACH TO LANE CLOSURE, FREEWAY/EXPRESSWAY |
| 701401-03 | LANE CLOSURE, FREEWAY/EXPRESSWAY |
| 701411-03 | LANE CLOSURE, MULTILANE, AT ENTRANCE OR EXIT RAMP FOR SPEEDS ≥ 45 MPH |
| 701426-02 | LANE CLOSURE, MULTILANE INTERMITTENT OR MOVING OPERATION, FOR SPEEDS ≥ 45 MPH |
| 702001-06 | TRAFFIC CONTROL DEVICES |
| 704001-02 | TEMPORARY CONCRETE BARRIER |
| 781001-02 | TYPICAL APPLICATIONS RAISED REFLECTIVE PAVEMENT MARKERS |

MICROFILMED _____
 REEL NUMBER _____
 AWARDED _____
 RESIDENT ENGINEER _____
 AS BUILT CHANGES WERE MADE
 ON THE FOLLOWING SHEETS _____

DISTRICT 3 NO. 1-815-434-6131
 PROJECT ENGINEER: JOE KANNEL 1-815-434-8420
 UNIT CHIEF: RON WOODSHANK 1-815-434-8419

J.U.L.I.E.
 JOINT UTILITY LOCATION INFORMATION FOR EXCAVATION
 1-800-892-0123

CONTRACT NO. 66653



GROSS LENGTH OF PROJECT (NB) = 33528 FEET 6.3 MI
 NET LENGTH OF PROJECT (NB) = 78 FEET 0.01 MI
 GROSS LENGTH OF PROJECT (SB) = 33528 FEET 6.3 MI
 NET LENGTH OF PROJECT (SB) = 580 FEET 0.11 MI

F.A.I. RTE.	SECTION	COUNTY	TOTAL SHEETS	SHEET NO.
57	(27-38)-1 & (27-1)-2	FORD	14	2
ILLINOIS				

GENERAL NOTES:

Plan dimensions and details relative to the existing roadway and structure have been taken from existing plans and are subject to nominal construction variations. It shall be the contractor's responsibility to verify such dimensions and details in the field and to make necessary approved adjustments prior to construction or ordering of materials. Such variations shall not be cause for additional compensation for a change in the scope of the work, however, the contractor will be paid for the quantity actually furnished at the unit price bid for the work.

The contractor shall be responsible for protecting utility property from construction operations as outlined in Article 107.31 of the Standard Specifications. The "Julie" Number is 1-800-892-0123. A minimum of forty-eight (48) hours advance notice is required.

The cost of any saw cuts made to complete the work as described in plan details, unless otherwise noted shall not be paid for separately but shall be included in the various pay items involved.

The thickness of bituminous mixtures shown on the plans is the nominal thickness. Deviations from the nominal thickness will be permitted when such deviations occur due to irregularities in the existing surface or base on which the bituminous mixture is placed.

Except as noted on the plans, pavement grades shown are at the top of pavement surfaces.

Before ordering pipe culverts or pipe drains, the contractor shall consult the Engineer for exact lengths.

Where section or subsection monuments are encountered, the engineer shall be notified before such monuments are removed. The contractor shall protect and carefully preserve all monuments until an authorized surveyor or agent has witnessed or otherwise referenced their location. The contractor shall be responsible for having an authorized surveyor reestablish any section or subsection monuments destroyed by his operations.

Seeding shall not be permitted at any time when the ground is frozen, wet, or in an unillable condition. Locations to be seeded will be determined by the Engineer.

Areas disturbed by the contractor's operations shall be restored, where applicable, shall be seeded and fertilized according to applicable portions of Section 250 of the Standard Specifications and as directed by the Engineer. The cost of this work shall be included with the cost of the related excavation items.

All elevations referring to U.S.G.S. mean sea level datum.

Abandoned underground utilities that conflict with construction shall be disposed of outside the limits of the right of way according to Article 202.03 of the Standard Specifications and as directed by the Engineer. This work will not be paid for separately but shall be included in the cost of earth excavation.

Any reference to a standard in these plans shall be interpreted to mean the edition as indicated by the subnumber listed on the index of sheets or the copy of the standard included in these plans.

The cost of making any pipe underdrain connections to an existing drainage structure or pipe shall be included in the cost of the new Pipe Underdrain.

The existing shoulders are low. In the event that construction operations result in a drop off greater than 3" between the edge of pavement or edge of shoulder within 3' of the edge of pavement and the earth or aggregate shoulders, then the drop off shall be projected according to Article 701.04(B)(1) of the Standard Specifications. This work will be considered as included in the contract unit prices for traffic control.

Reinforcement bars that are to remain in place which are damaged during concrete removal operations shall be repaired or replaced using approved bar splicer or anchorage system. Cost included with "Pavement Removal Special".

Reinforcement bars shall conform to the requirements of AASHTO M 31 or M322 Grade 60.

The following rates of application have been used in calculation plan quantities:

Granular Materials	2.05	ons/ Cu Ydd
--------------------	------	-------------

	SUPERPAVE BINDER FOR SHOULDERS	SUPERPAVE SURFACE FOR SHOULDERS	STABILIZED SUB-BASE
	BOTTOM LIFTS	TOP LIFTS	
PG GRADE	PG64-22	PG64-22	PG58-22
MAX % RAP ALLOWABLE	25%	15%	30%
DESIGN AIR VOIDS	3.0% @ N50	3.0% @ N50	2.0% @ N30
MIXTURE COMPOSITION	IL 19.0	IL 12.5 OR IL 9.5	BAM
FRICTION AGGREGATE		MIXTURE C	
PLANT CONTROL LIMITS	CLASS I	CLASS I	NON-CLASS I
DENSITY CONTROL METHOD	.	.	SEE SPECIAL PROVISION

•MATERIAL SHALL BE COMPACTED TO 93 TO 97 PERCENT OF THE MAXIMUM THEORETICAL DENSITY EXCEPT THE THE BOTTOM LIFT SHALL BE COMPACTED TO A MINIMUM OF 92.0 PERCENT THE MAXIMUM THEORETICAL DENSITY SHALL BE DETERMINED FROM THE MOVING AVERAGE AS SPECIFIED IN THE QC/QA SPECIFICATION.

••IF RAP OPTION IS SELECTED, THE ASPHALT CEMENT GRADE MAY NEED TO BE ADJUSTED. THIS WILL BE DETERMINED BY THE ENGINEER.

PREPARED BY: *Rin Paul*
DISTRICT STUDIES & PLANS ENGINEER

DATE: 5-16-06

EXAMINED BY: *Herb Jung*
DISTRICT CONSTRUCTION ENGINEER

Matt J...
DISTRICT MATERIALS ENGINEER

Bruce A. ...
DISTRICT OPERATIONS ENGINEER

REVISIONS	
NAME	DATE

ILLINOIS DEPARTMENT OF TRANSPORTATION

GENERAL NOTES

FAI 57
SEC: (27-38)-1 & (27-1)-2
FORD COUNTY

DATE 04/05/2006

DRAWN BY RLW

F.A.I. RTE.	SECTION	COUNTY	TOTAL SHEETS	SHEET NO.
57	(27-38)I-1 & (27-1)I-2	FORD	14	3
ILLINOIS				

SUMMARY OF QUANTITIES

CONSTRUCTION CODE: **J000**

CODE NO.	ITEM	UNIT	TOTAL QUANTITY	RURAL 100% STATE	
				SECTION (27-38)I-1	SECTION (27-1)I-2
20200100	EARTH EXCAVATION	CU YD	716		716
21001000	GEOTECHNICAL FABRIC FOR GROUND STABILIZATION	SQ YD	781		781
42100330	CONTINUOUSLY REINFORCED PORTLAND CEMENT CONCRETE PAVEMENT 11 1/2"	SQ YD	781		781
42100930	PAVEMENT REINFORCEMENT 11 1/2"	SQ YD	781		781
44001430	BITUMINOUS SHOULDER REMOVAL	SQ YD	879		879
44002100	CONTINUOUSLY REINFORCED CONCRETE PAVEMENT REMOVAL	SQ YD	781		781
44212899	PAVEMENT PATCHING (FULL DEPTH)	SQ YD	360	48	312
44213000	PATCHING REINFORCEMENT	SQ YD	360	48	312
44213200	SAW CUTS	FOOT	2604	360	2244
48101200	AGGREGATE SHOULDERS TYPE B	TON	44		44
48202830	BITUMINOUS SHOULDERS SUPERPAVE 11 1/2"	SQ YD	879		879
60107800	PIPE UNDERDRAINS 8"	FOOT	771		771
60108100	PIPE UNDERDRAINS 4" (SPECIAL)	FOOT	24		24
60108300	PIPE UNDERDRAINS 8" (SPECIAL)	FOOT	24		24
64200105	SHOULDER RUMBLE STRIPS	FOOT	791		791
67000400	ENGINEER'S FIELD OFFICE, TYPE A	CALMO	2		2
67100100	MOBILIZATION	L SUM	1		1

REVISIONS	
NAME	DATE

ILLINOIS DEPARTMENT OF TRANSPORTATION

SUMMARY OF QUANTITIES
FAI 57
SEC: (27-38)I-1 & (27-1)I-2
FORD COUNTY

DATE 04/05/2006

DRAWN BY RLW

Date: April 5, 2006
File Name: ar/projects/consair07/cons067/dsall.dgn

F.A.I. RTE.	SECTION	COUNTY	TOTAL SHEETS	SHEET NO.
57	(27-38)I-1 & (27-1)I-2	FORD	14	4
ILLINOIS				

SUMMARY OF QUANTITIES

CONSTRUCTION CODE: **J000**

RURAL
100% STATE

CODE NO.	ITEM	UNIT	TOTAL QUANTITY	SECTION (27-38)I-1	SECTION (27-1)I-2
70100420	TRAFFIC CONTROL AND PROTECTION, STANDARD 701411	EACH	4		4
70100800	TRAFFIC CONTROL AND PROTECTION, STANDARD 701401	L SUM	1	0.25	0.75
70101605	TRAFFIC CONTROL AND PROTECTION, STANDARD 701402 (SPECIAL)	EACH	1		1
70103815	TRAFFIC CONTROL AND SURVEILLANCE	CALDAY	40	10	30
70301000	WORK ZONE PAVEMENT MARKING REMOVAL	SQ FT	1775		1775
70400100	TEMPORARY CONCRETE BARRIER	FOOT	1170		1170
* 78005110	EPOXY PAVEMENT MARKING - LINE 4"	FOOT	2390		2390
* 78005130	EPOXY PAVEMENT MARKING - LINE 6"	FOOT	990		990
* 78100100	RAISED REFLECTIVE PAVEMENT MARKER	EACH	40	5	35
78300100	PAVEMENT MARKING REMOVAL	SQ FT	1537		1537
X0301766	DRILL AND GROUT #6 TIE BARS	EACH	235		235
X0301894	REMOVE AND REINSTALL CONCRETE HEADWALL FOR PIPE UNDERDRAINS	EACH	1		1
X0349800	CONCRETE HEADWALL FOR PIPE UNDERDRAINS REMOVAL	EACH	1		1
X3120700	STABILIZED SUB-BASE 4", SUPERPAVE	SQ YD	912		912
Z0001058	AGGREGATE SUBGRADE 18"	SQ YD	1432		1432
● Z0030250	IMPACT ATTENUATOR, TEMPORARY (NON-REDIRECTIVE) TEST LEVEL 3	EACH	1		1
Z0040530	PIPE UNDERDRAIN REMOVAL	FOOT	819		819

● SFTY 3N

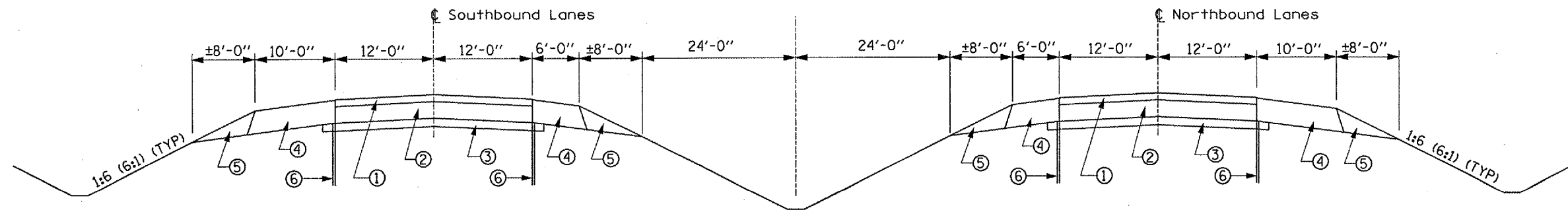
* SPECIALTY ITEM

REVISIONS	
NAME	DATE

ILLINOIS DEPARTMENT OF TRANSPORTATION
SUMMARY OF QUANTITIES
FAI 57
SEC: (27-38)I-1 & (27-1)I-2
FORD COUNTY

Date: April 5, 2006
File Name: ar/projects/emo107/c0303/040506.dgn

F.A.I. RTE.	SECTION	COUNTY	TOTAL SHEETS	SHEET NO.
57	(27-38)I-1 & (27-1)I-2	FORD	14	5
ILLINOIS				

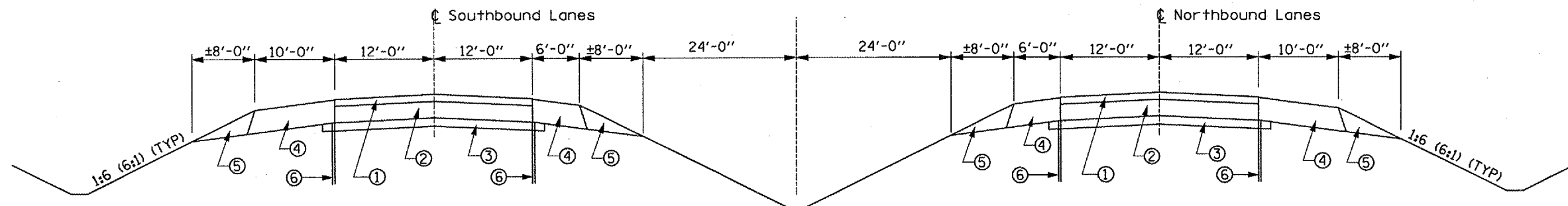


EXISTING TYPICAL SECTION 1

SECTION: (27-38)I-1

M.M. 257.14 (CHAMPAIGN COUNTY LINE) TO
M.M. 260.56 (0.7 mile) SOUTH OF IL. 9

- ① 3 1/2" Bituminous Surface
- ② 7" CRC Pavement
- ③ 4" Stabilized Sub-base (B.A.M.)
- ④ 11" Bituminous Shoulder
- ⑤ Aggregate Shoulder
- ⑥ 4" Pipe Underdrain



EXISTING TYPICAL SECTION 2

SECTION: (27-1)I-2

M.M. 260.56 (0.7 mile) SOUTH OF IL. 9
TO M.M. 263.49 (IROQUOIS COUNTY LINE)

- ① 3 1/2" Bituminous Surface
- ② 8" CRC Pavement
- ③ 4" Stabilized Sub-base (B.A.M.)
- ④ 11" Bituminous Shoulder
- ⑤ Aggregate Shoulder
- ⑥ 4" Pipe Underdrain

REVISIONS	
NAME	DATE

ILLINOIS DEPARTMENT OF TRANSPORTATION

TYPICAL SECTIONS
FAI 57
SEC: (27-38)I-1 & (27-1)I-2
FORD COUNTY

DATE 04/05/2006

DRAWN BY RLW

F.A.I. RTE.	SECTION	COUNTY	TOTAL SHEETS	SHEET NO.
57	(27-38)I-1 & (27-1)I-2	FORD	14	6
ILLINOIS				

CLASS A PATCHING NORTHBOUND LANES				
LOCATION BY MILE POST	DRIVING LANE			REMARKS
	PAVEMENT PATCHING (FULL DEPTH)	PATCHING REINFORCEMENT	SAW CUTS	
	SQ YD	SQ YD	FOOT	
257.14	8	8	60	CHAMPAIGN COUNTY LINE
258.25	8	8	60	
258.52	8	8	60	
258.70	8	8	60	
258.71	8	8	60	
258.72	8	8	60	
TOTALS	48	48	360	

CLASS A PATCHING NORTHBOUND LANES				
LOCATION BY MILE POST	DRIVING LANE			REMARKS
	PAVEMENT PATCHING (FULL DEPTH)	PATCHING REINFORCEMENT	SAW CUTS	
	SQ YD	SQ YD	FOOT	
260.80	8	8	60	IL ROUTE 9 INTERCHANGE
260.86	8	8	60	
261.05				
261.08	8	8	60	
261.70	8	8	60	
262.45	8	8	60	
262.70	8	8	60	
262.72	8	8	60	
262.84	8	8	60	
263.49	8	8	60	
TOTALS	72	72	540	IROQUOIS COUNTY LINE

REVISIONS	
NAME	DATE

ILLINOIS DEPARTMENT OF TRANSPORTATION
PATCHING SCHEDULES
NORTHBOUND LANES
 FAI 57
 SEC: (27-38)I-1 & (27-1)I-2
 FORD COUNTY
 DATE 04/05/2006
 DRAWN BY RLW

Date: April 5, 2006
 File Name: c:\projects\main87\cm388\detail.dgn

F.A.I. RTE.	SECTION	COUNTY	TOTAL SHEETS	SHEET NO.
57	(27-38)I-1 & (27-1)I-2	FORD	14	7
ILLINOIS				

CLASS A PATCHING SOUTHBOUND LANES

LOCATION BY MILE POST	DRIVING LANE			REMARKS
	PAVEMENT PATCHING (FULL DEPTH)	PATCHING REINFORCEMENT	SAW CUTS	
	SQ YD	SQ YD	FOOT	
263.49				IROQUOIS COUNTY LINE
263.15	13	13	68	
263.10	8	8	60	
263.08	8	8	60	
263.06	8	8	60	
263.00	8	8	60	
262.95	8	8	60	
262.90	13	13	68	
262.86	13	13	68	
262.85	8	8	60	
262.84	8	8	60	
262.81	8	8	60	
262.80	8	8	60	
262.79	8	8	60	
262.76	8	8	60	
262.75	8	8	60	
262.74	8	8	60	
262.69	8	8	60	
262.62	8	8	60	
262.41	8	8	60	
262.39	8	8	60	
262.35	8	8	60	
261.95	8	8	60	
261.75	8	8	60	
261.71	8	8	60	
261.65	8	8	60	
261.50	8	8	60	
261.48	8	8	60	
261.42	8	8	60	
261.05				IL ROUTE 9 INTERCHANGE
TOTALS	240	240	1704	

REVISIONS	
NAME	DATE

ILLINOIS DEPARTMENT OF TRANSPORTATION
PATCHING SCHEDULES
SOUTHBOUND LANES
 FAI 57
 SEC: (27-38)I-1 & (27-1)I-2
 FORD COUNTY
 DATE 04/05/2006
 DRAWN BY RLW

Date: April 5, 2006
 File Name: c:\projects\cman07\040308\detla.dgn

F.A.I. RTE.	SECTION	COUNTY	TOTAL SHEETS	SHEET NO.
57	(27-38)I-1 & (27-1)I-2	FORD	14	8
ILLINOIS				

DRAINAGE SCHEDULE AT S.N. 027-0048

LOCATION BY STATIONING	CONCRETE HEADWALL FOR PIPE UNDERDRAIN REMOVAL	PIPE UNDERDRAIN REMOVAL	PIPE UNDERDRAIN 8"	PIPE UNDERDRAIN 4" (SPECIAL)	PIPE UNDERDRAIN 8" (SPECIAL)	REMOVE & REINSTALL CONCRETE HEADWALL FOR PIPE UNDERDRAINS
	EACH	FOOT	FOOT	FOOT	FOOT	EACH
255+55 TO 255+87		32	32			
255+87 TO 255+90		3	3			
255+55				24		1
255+90 TO 258+66		276	276			
257+51		24				
258+66 TO 259+01		35	35			
259+01 TO 261+70		269	269			
261+46	1	24				
261+70 TO 261+73		3	3			
261+73 TO 263+26		153	153			
263+26					24	1
TOTAL	1	819	771	24	24	1

STAGING SCHEDULE AT S.N. 027-0048

LOCATION	PAVEMENT MARKING REMOVAL	WORKZONE PAVEMENT MARKING REMOVAL	TEMPORARY CONCRETE BARRIER
	SQ FT	SQ FT	FOOT
STA 252+45 TO STA 284+36	1537	1775	1170
TOTALS	1537	1775	1170

REMOVAL SCHEDULE AT S.N. 027-0048

LOCATION	EARTH EXCAVATION	BITUMINOUS SHOULDER REMOVAL	CRC PAVEMENT REMOVAL
	CU YD	SQ YD	SQ YD
STA 254+45 TO STA 264+35	716	879	781
TOTALS	716	879	781

PAVEMENT MARKING SCHEDULE

LOCATION	EPOXY PAVEMENT MARKING LINE 4"	EPOXY PAVEMENT MARKING LINE 6"	45 MIL HOT SPRAY THERMOPLASTIC PAVEMENT MARKING LINE 4"	45 MIL HOT SPRAY THERMOPLASTIC PAVEMENT MARKING LINE 6"	RAISED REFLECTIVE PAVEMENT
	FOOT	FOOT	FOOT	FOOT	MARKER
	WHITE	WHITE	WHITE	WHITE	CRYSTAL
STA 254+45 TO STA 264+35	2390	990			24
PATCHING LOCATIONS			270	70	16
TOTALS	2390	990	270	70	40

REPLACEMENT SCHEDULE AT S.N. 027-0048

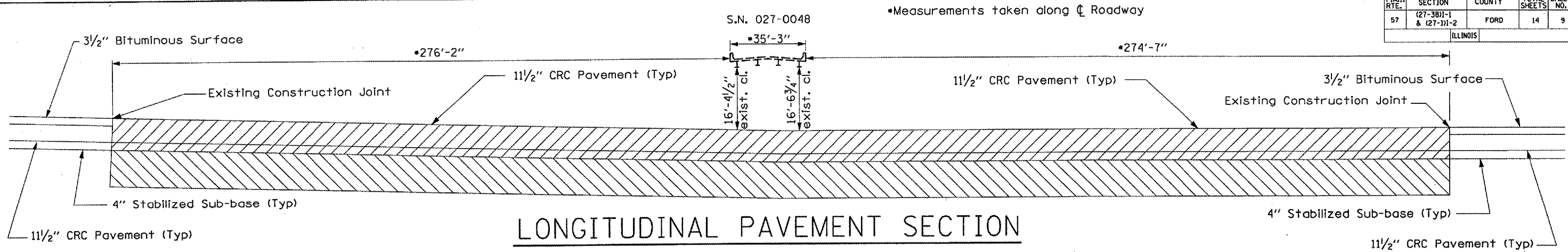
LOCATION	GEOTECHNICAL FABRIC FOR GROUND STABILIZATION	AGGREGATE SUBGRADE 18"	STABILIZED SUB-BASE 4" SUPERPAVE	PAVEMENT REINFORCEMENT 11 1/2"	DRILL & GROUT #6 TIE BARS	CONTINUOUSLY REINFORCED PORTLAND CEMENT CONCRETE PAVEMENT 11 1/2"	BITUMINOUS SHOULDERS SUPERPAVE 11 1/2'	SHOULDER RUMBLE STRIPS	AGGREGATE SHOULDERS TYPE B
	SQ YD	SQ YD	SQ YD	SQ YD	EACH	SQ YD	SQ YD	FOOT	TON
STA 254+45 TO STA 264+35	1660	1432	912	781	235	781	879	791	44
TOTALS	1660	1432	912	781	235	781	879	791	44

REVISIONS	
NAME	DATE

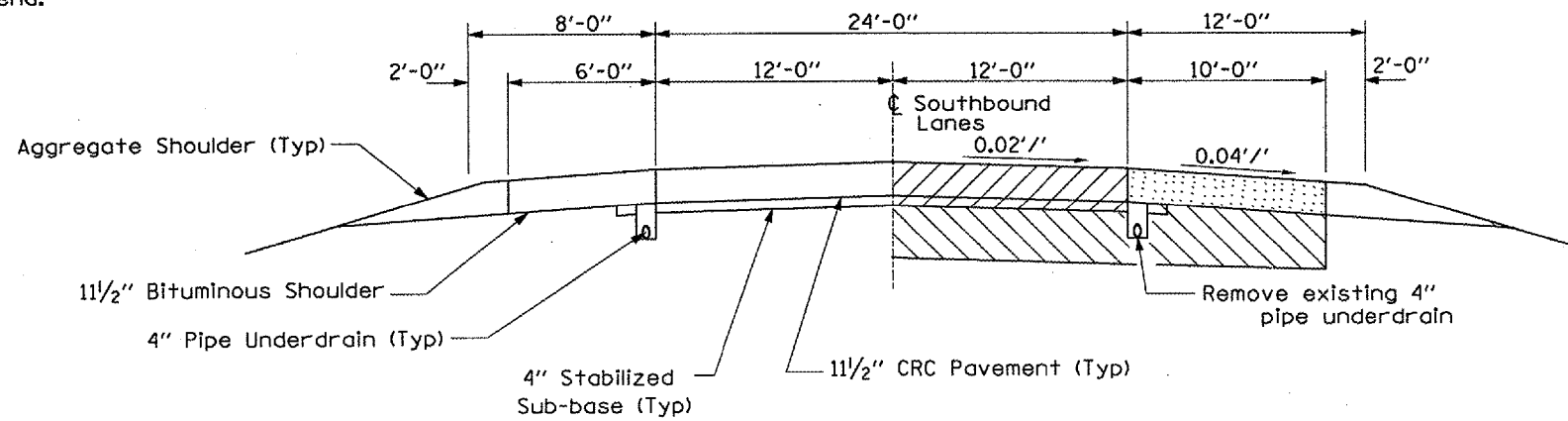
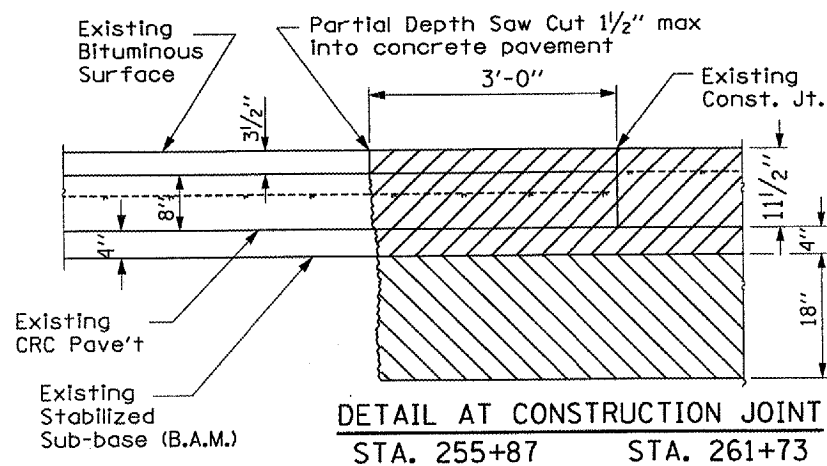
ILLINOIS DEPARTMENT OF TRANSPORTATION
SCHEDULES AT S.N. 027-0048
 FAI 57
 SEC: (27-38)I-1 & (27-1)I-2
 FORD COUNTY
 DATE 04/05/2006
 DRAWN BY RLW

Date: Apr 15, 2006
 File Name: c:\projects\cmanr027\m300\deln1a.dgn

F.A.I. RTE.	SECTION	COUNTY	TOTAL SHEETS	SHEET NO.
57	(27-38)I-1 & (27-1)I-2	FORD	14	9
ILLINOIS				



NOTE: Existing longitudinal pavement reinforcement shall be cut off 3'-0" into removal area for lapping of proposed reinforcement. Typical each end.

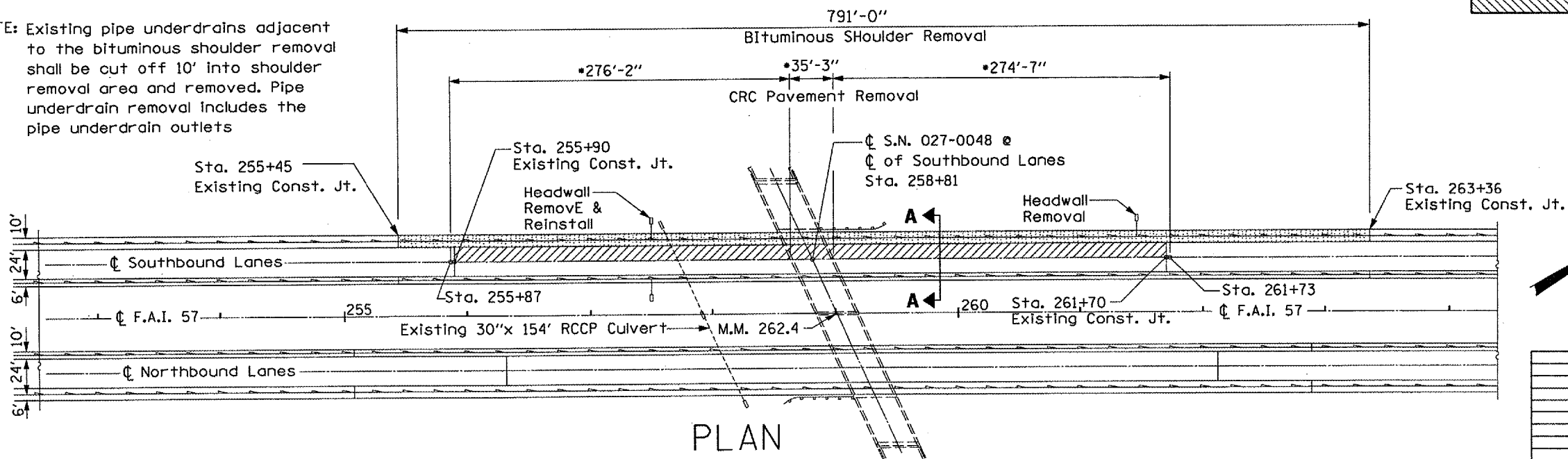


SECTION A-A

•Measurements taken along ϕ Roadway

- CRC Pavement Removal (11 1/2")
- Bituminous Shoulder Removal (11 1/2")
- Earth Excavation (18")

NOTE: Existing pipe underdrains adjacent to the bituminous shoulder removal shall be cut off 10' into shoulder removal area and removed. Pipe underdrain removal includes the pipe underdrain outlets



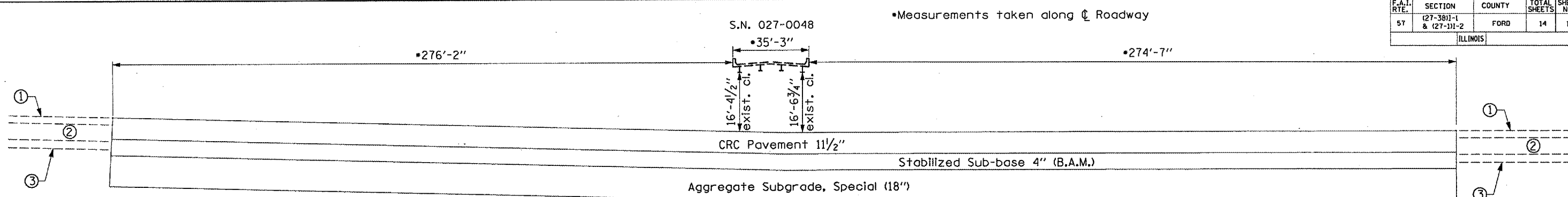
PLAN

NOTE: Existing pavement stationing are metric units
Plan details have been converted to english units

REVISIONS	
NAME	DATE

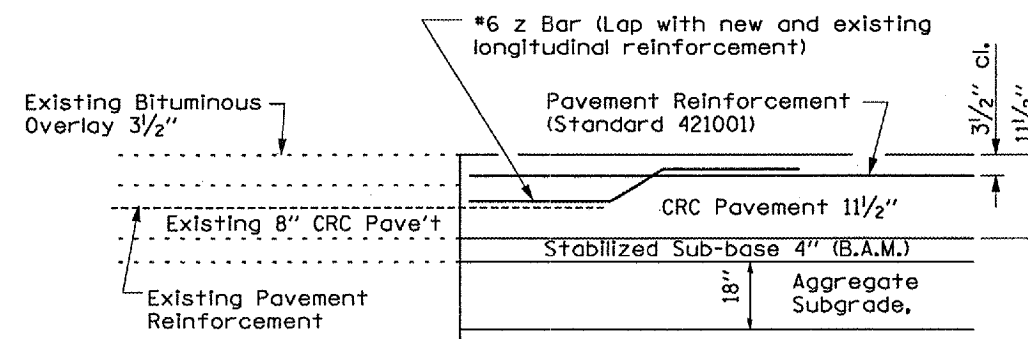
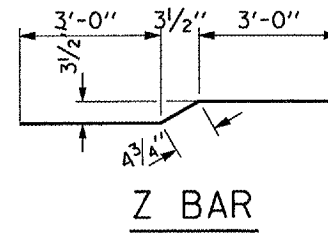
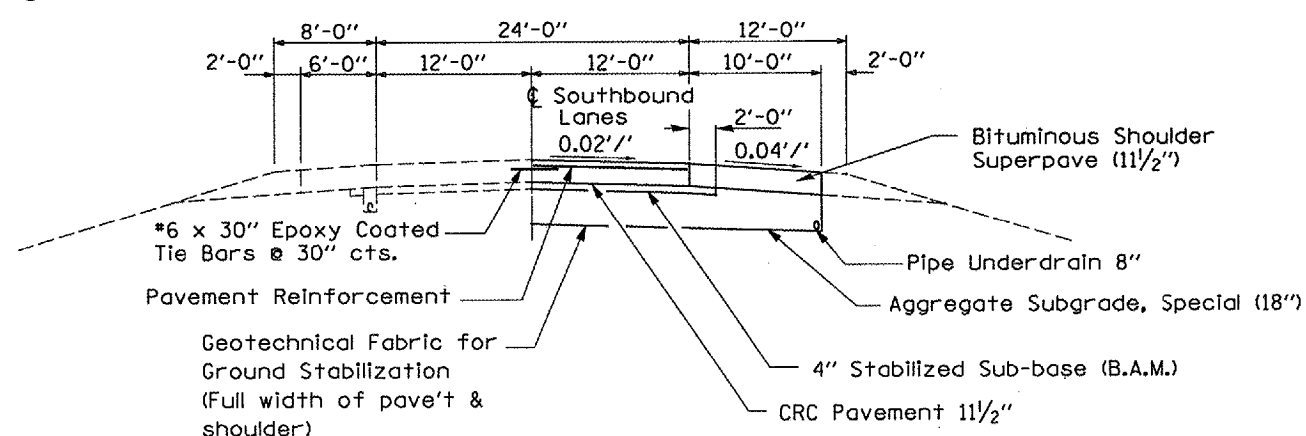
ILLINOIS DEPARTMENT OF TRANSPORTATION
EXISTING PLAN DETAILS
 AT M.M. 262.4
 (S.N. 027-0048)
 FAI 57
 SEC: (27-38)I-1 & (27-1)I-2
 FORD COUNTY
 DATE 04/5/2006 DRAWN BY RLV

F.A.I. RTE.	SECTION	COUNTY	TOTAL SHEETS	SHEET NO.
57	(27-38)I-1 & (27-1)I-2	FORD	14	10
ILLINOIS				



- ① Existing 3 1/3" Bituminous Overlay
- ② Existing 1 1/2" CRC Pavement
- ③ Existing 4" Stabilized Sub-base (B.A.M.)

LONGITUDINAL PAVEMENT SECTION

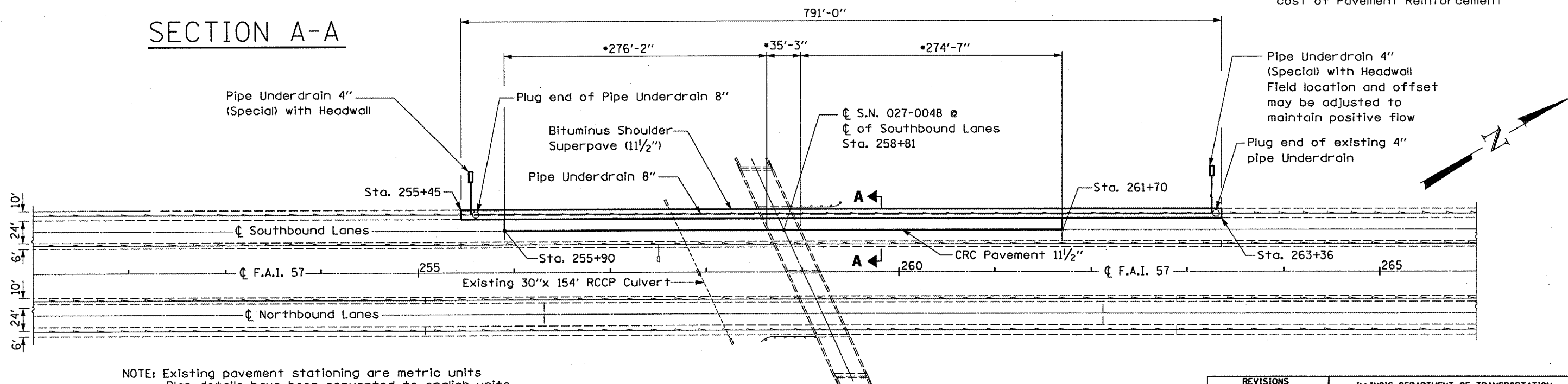


DETAIL AT CONSTRUCTION JOINT

STA. 255+87 STA. 261+73

NOTE: z bars shall be included in the cost of Pavement Reinforcement

SECTION A-A



NOTE: Existing pavement stationing are metric units
Plan details have been converted to english units

PLAN

REVISIONS	
NAME	DATE

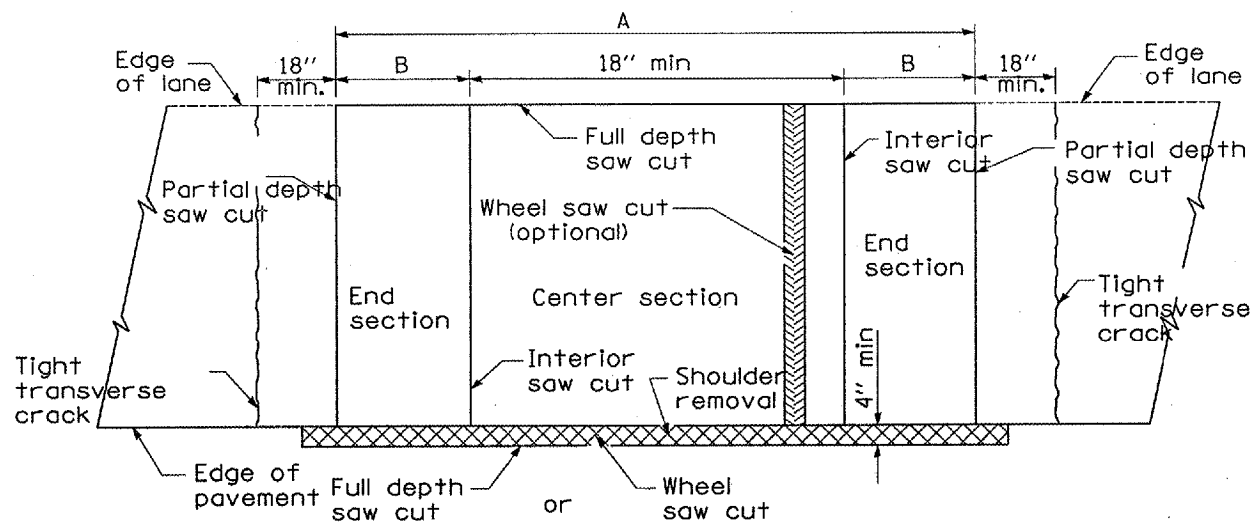
ILLINOIS DEPARTMENT OF TRANSPORTATION
PROPOSED PLAN DETAILS
AT M.M. 262.4
(S.N. 027-0048)
FAI 57
SEC: (27-38)I-1 & (27-1)I-2
FORD COUNTY

DATE 04/05/2006

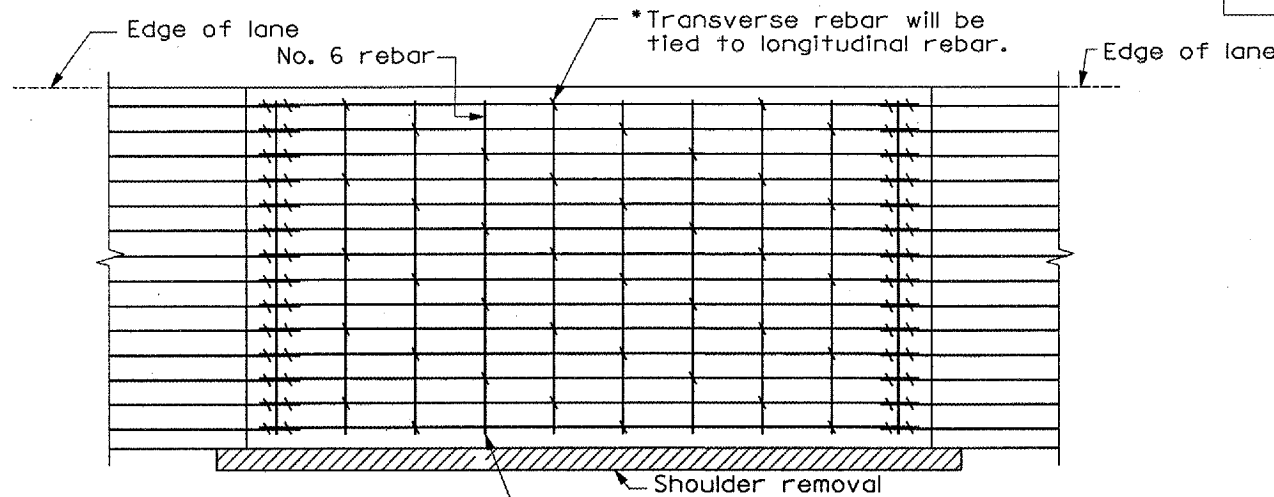
DRAWN BY RLV

D:\proj\66653\15_2006\Final\Notes\plan\plan\plan.dwg
 04/05/2006 10:00 AM
 RLV

F.A.I. RTE.	SECTION	COUNTY	TOTAL SHEETS	SHEET NO.
57	(27-38)I-1 & (27-1)I-2	FORD	14	11
ILLINOIS				



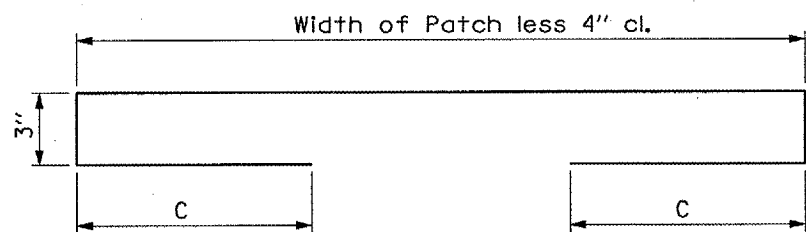
PAVEMENT SAWING DETAIL
(BITUMINOUS SHOULDER)



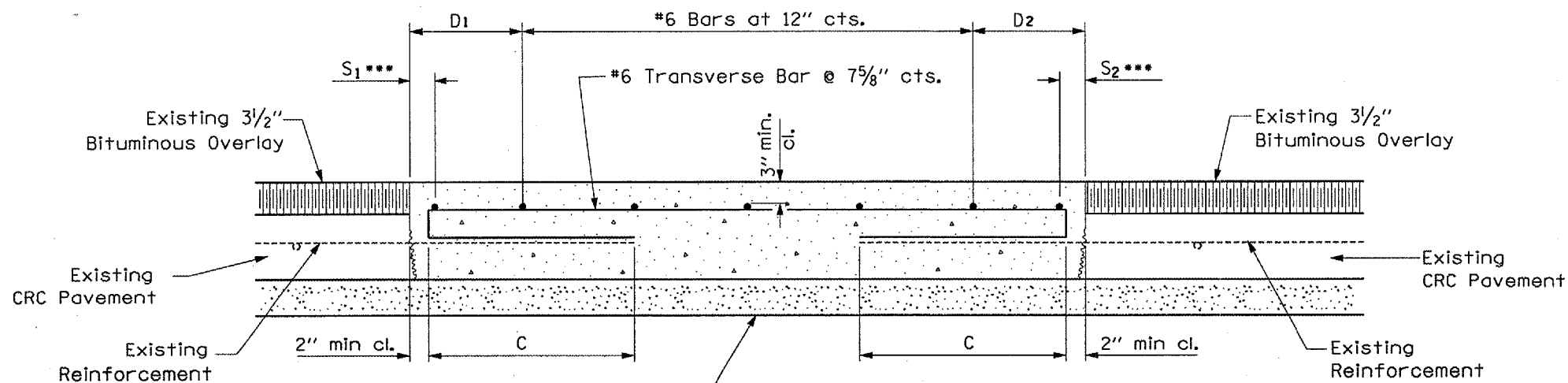
PAVEMENT REINFORCEMENT DETAIL

Transverse rebar will extend to outer longitudinal rebar while providing a minimum 3" clearance from existing pavement edge.

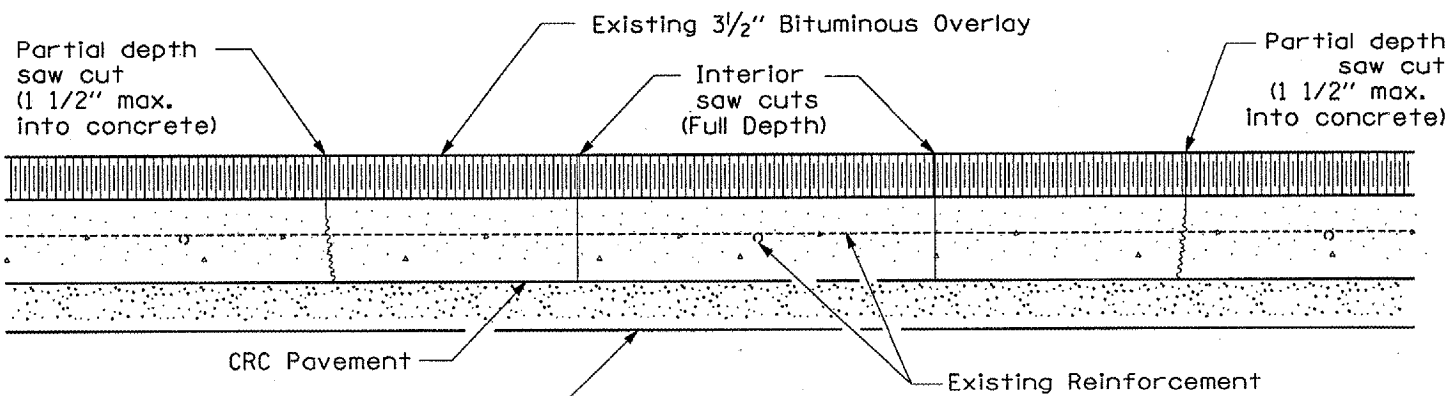
EXISTING LONGITUDINAL REINFORCEMENT BARS	A (min.)	B (min.)	C (min.)
No. 6	6'-0"	21"	22"



#6 TRANSVERSE BAR



PROPOSED CLASS A PATCHING DETAIL



SAW CUT DETAIL

- Every 3rd intersection must be tied.
- Lap new reinforcement with existing longitudinal reinforcement
- Variable: Where S_1 and S_2 are $2\frac{1}{2}$ " min. and 12" max. $D_1 = 2(S_1)$ and $D_2 = 2(S_2)$.

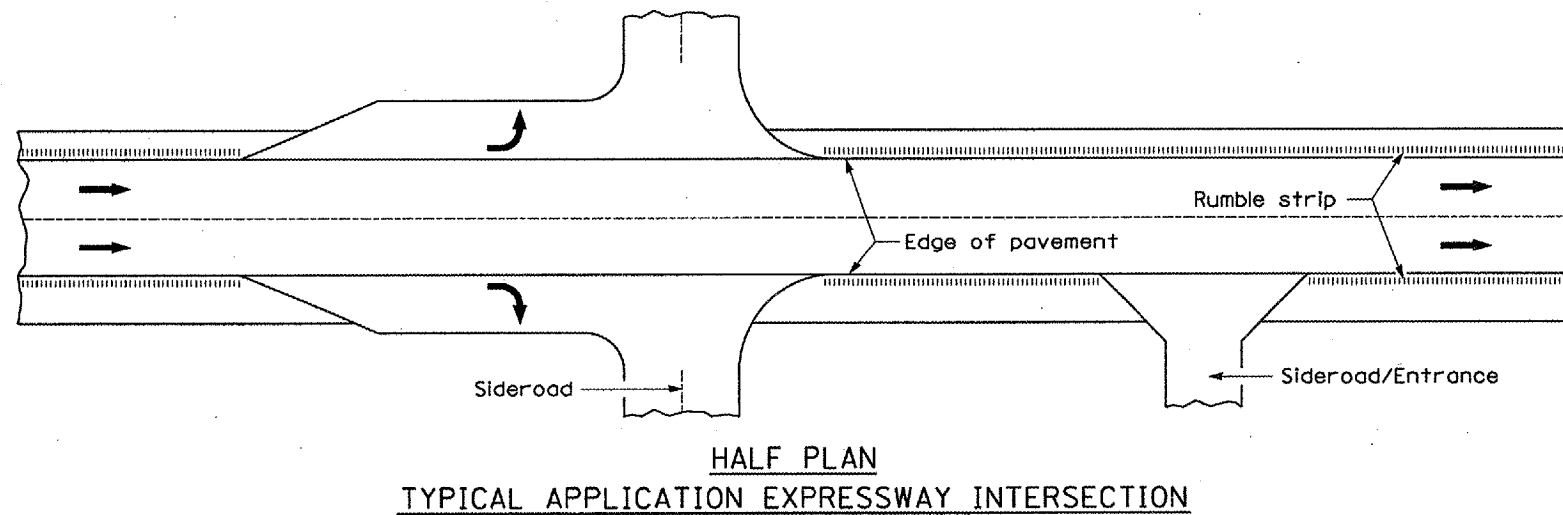
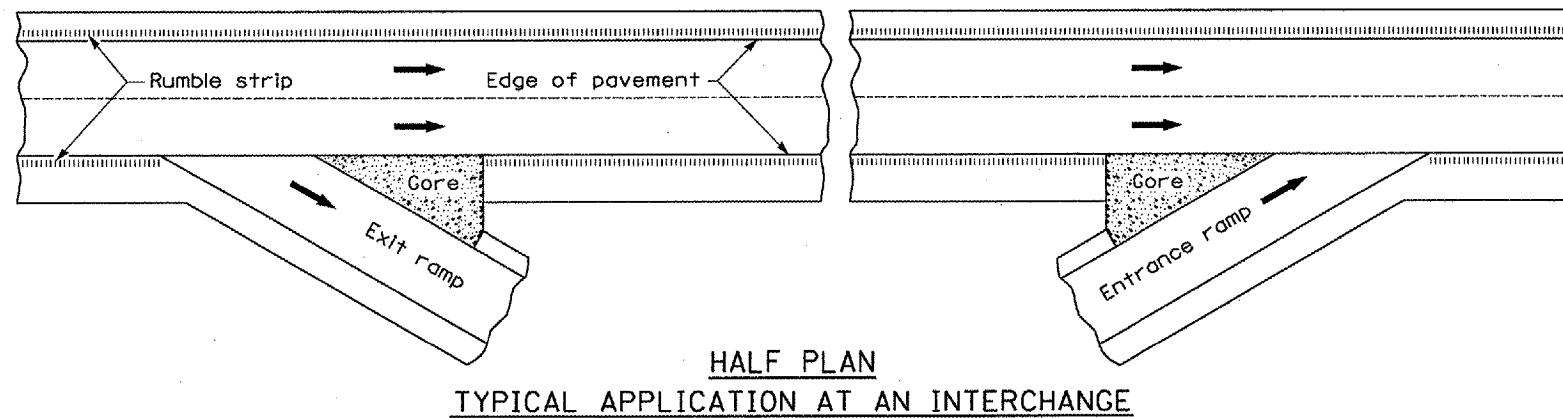
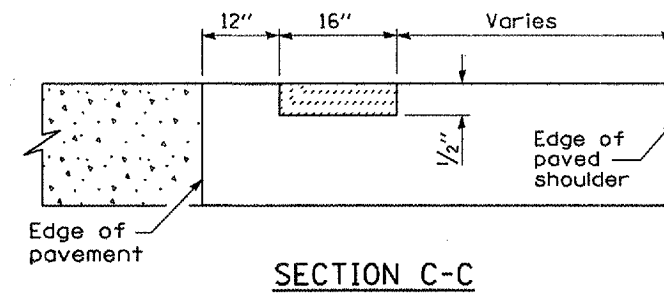
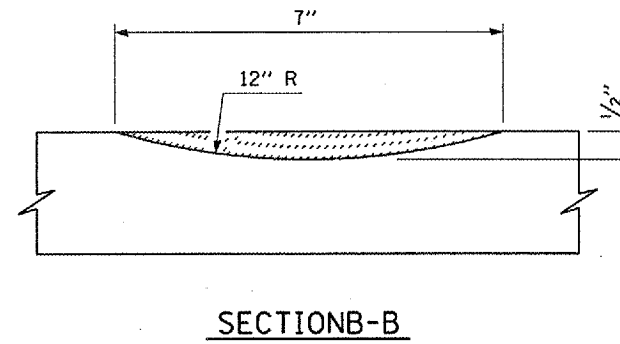
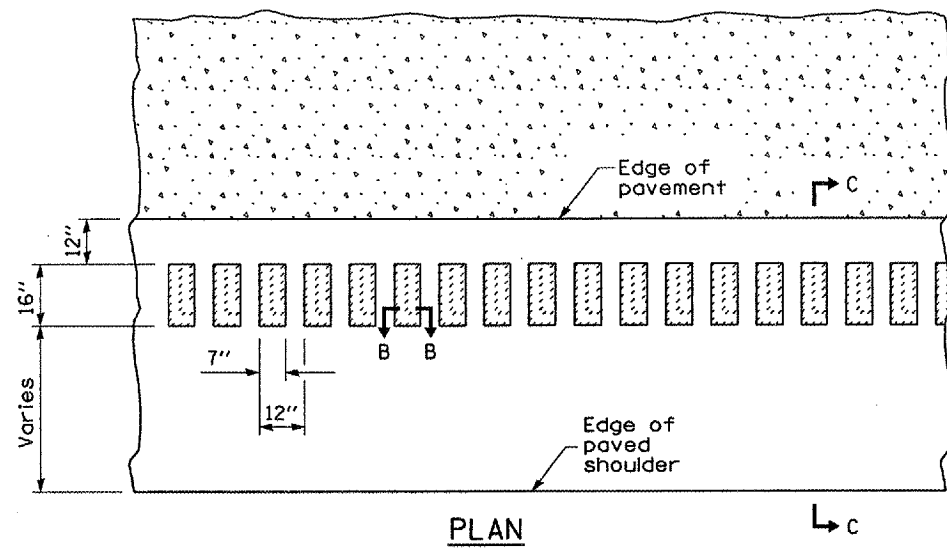
GENERAL NOTES

When patching two adjacent lanes in one operation, the longitudinal joint shall be a sawed longitudinal joint as detailed on Standard 420001; however, the groove shall be either preformed or sawed. Tie bars shall only be included for patches 6.0 m (20') or longer.

REVISIONS	
NAME	DATE

ILLINOIS DEPARTMENT OF TRANSPORTATION
CLASS A PATCHING DETAILS
FAI 57
SEC: (27-38)I-1 & (27-1)I-2
FORD COUNTY

F.A.I. RTE.	SECTION	COUNTY	TOTAL SHEETS	SHEET NO.
57	(27-38)I-1 & (27-1)I-2	FORD	14	12
ILLINOIS				



GENERAL NOTES

On Portland cement concrete shoulders, no shoulder rumble strip shall be located closer than 150 mm (6") of a traverse joint.

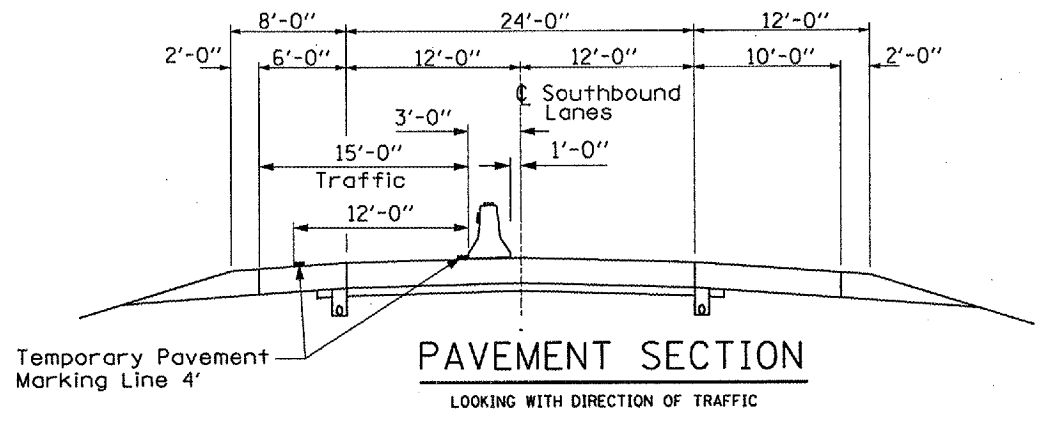
Omit shoulder rumble strips across structures.

REVISIONS	
NAME	DATE

ILLINOIS DEPARTMENT OF TRANSPORTATION
SHOULDER RUMBLE STRIP DETAIL
 FAI 57
 SEC: (27-38)I-1 & (27-1)I-2
 FORD COUNTY
 DATE 04/05/2006
 DRAWN BY RLW

Date: April 5, 2006
 File Name: c:\projects\csm\m7\on386\ds\m11.dgn

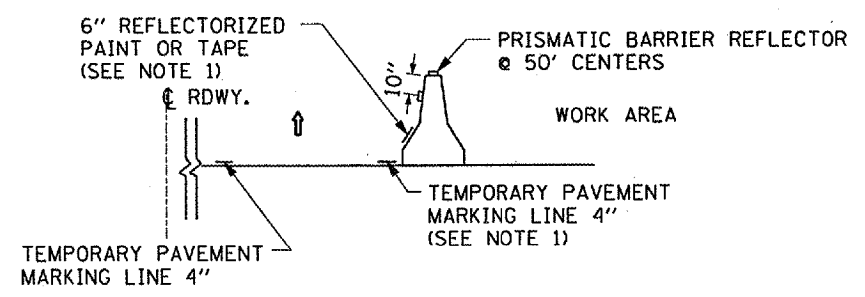
F.A.I. RTE.	SECTION	COUNTY	TOTAL SHEETS	SHEET NO.
57	(27-38)I-1 & (27-1)I-2	FORD	14	13
ILLINOIS				



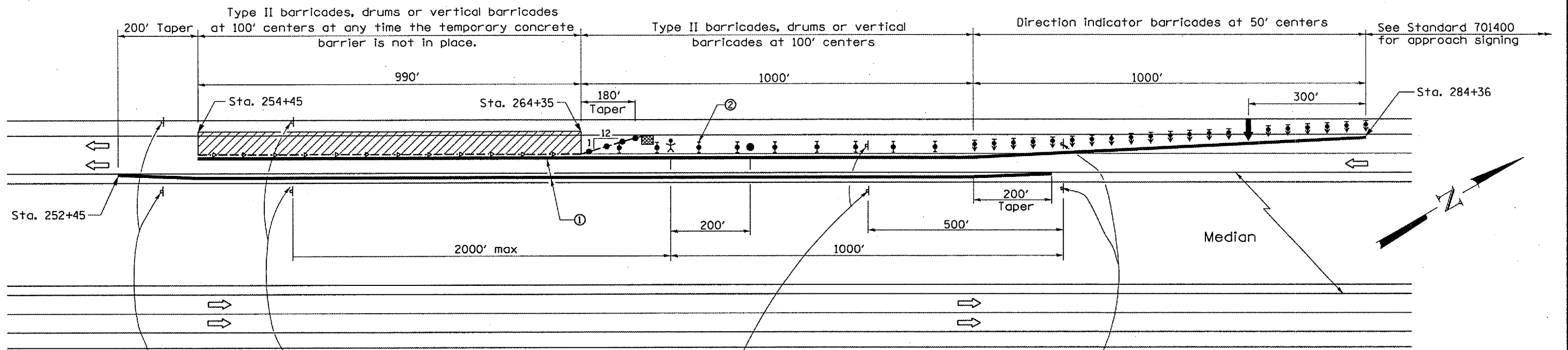
- SYMBOLS**
- Arrow board
 - Work area
 - Worker
 - Sign
 - Direction indicator barricade with steady burn monodirectional light
 - Type II barricade, drum, or vertical barricade with steady burn monodirectional light
 - Flagger with traffic control sign

- GENERAL NOTES**
- This Standard is used where at any time any vehicle, equipment, workers or their activities will encroach on the lane adjacent to the shoulder, or on the shoulder within 24" of the edge of pavement.
- This Standard must always be used in combination with Standard 701400.
- This Standard also applies when work is being performed in the left lane. Under these conditions, the set up would be a mirror image to what is shown.
- A check barricade shall be placed in the middle of the closed lane and at the shoulder at 1000' centers.
- ① ReflectORIZED temporary pavement marking tape shall be placed throughout the taper and alongside the work area as shown on this detail when the closure time is greater than fourteen days. The right edge line shall be white and the left edge line shall be yellow.
 - ② Type II barricades, drums or vertical barricades shall be placed along side the work area and shall remain in place until the temporary concrete barrier has been placed.
 - ③ Work Zone speed limit signs and Flagger signs shall be moved as necessary to maintain the required spacing between the signs and the workers during the placing of the temporary concrete barrier.
- The Work Zone and Flagger signs shall be removed or covered at the option of the contractor after the temporary concrete barrier has been placed and reinstalled or uncovered prior to the removal of the temporary concrete barrier.

- NOTES:**
1. THE CONTRACTOR HAS THE OPTION OF USING EITHER THE LINE ON THE TEMPORARY CONCRETE BARRIER OR ON THE PAVEMENT.
 2. THE COLOR OF THE REFLECTORS AND PAVEMENT/BARRIER MARKING LINE WILL VARY WITH STAGING AND SHALL MATCH THE EXISTING LINE IN THE WORK AREA.
 3. THE COST OF THE REFLECTORS AND THE PAVEMENT/BARRIER MARKING LINE IS INCLUDED IN THE COST OF THE TEMPORARY CONCRETE BARRIER



TEMPORARY CONCRETE BARRIER DETAIL



620-1103(0)-3660

END WORK ZONE SPEED LIMIT

②

WORK ZONE	W2-1115(0)-3618
SPEED LIMIT	R2-1-3648
RESUMES	W2-1113(0)-3612
SEEK FINE MINIMUM	R2-1106-3618

W20-1101(0)-48

③

FLAGGER

W2-1115(0)-3618

R2-1-3648

W2-1114(0)-3612

R2-1106-3618

③

WORK ZONE	W2-1115(0)-3618
SPEED LIMIT	R2-1-3648
BEGINS	W2-1114(0)-3612
SEEK FINE MINIMUM	R2-1106-3618

REVISIONS	
NAME	DATE

ILLINOIS DEPARTMENT OF TRANSPORTATION

TRAFFIC CONTROL & PROTECTION

STANDARD 701402 (SPECIAL)

FAI 57

SEC: (27-38)I-1 & (27-1)I-2

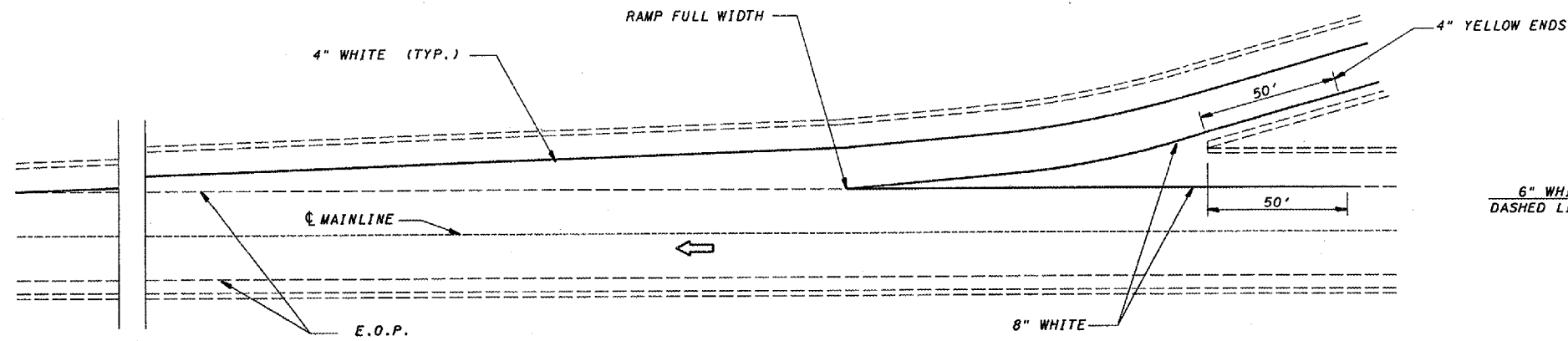
FORD COUNTY

DATE 04/05/2006

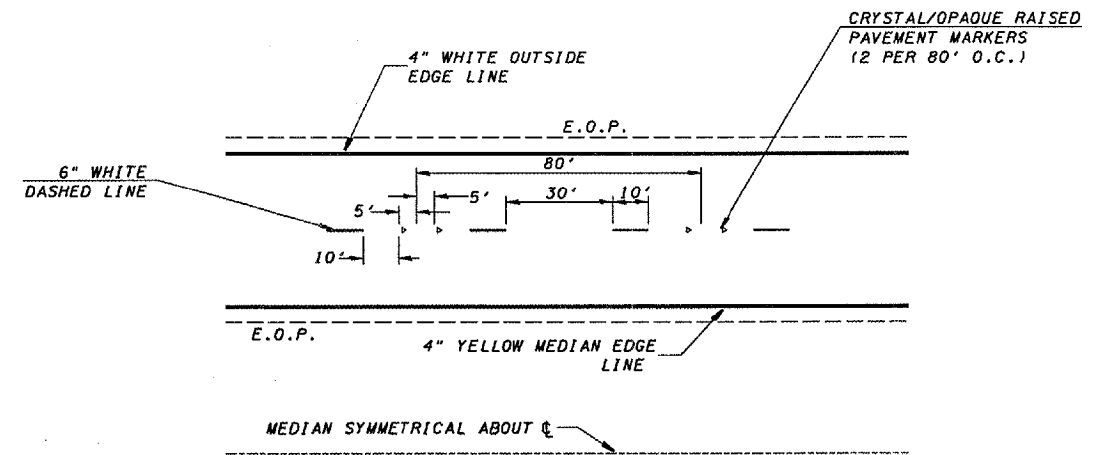
DRAWN BY R.L.W.

Date: Apr 15, 2006
File Name: c:\projects\cmm\07\cm038\detaila.dgn

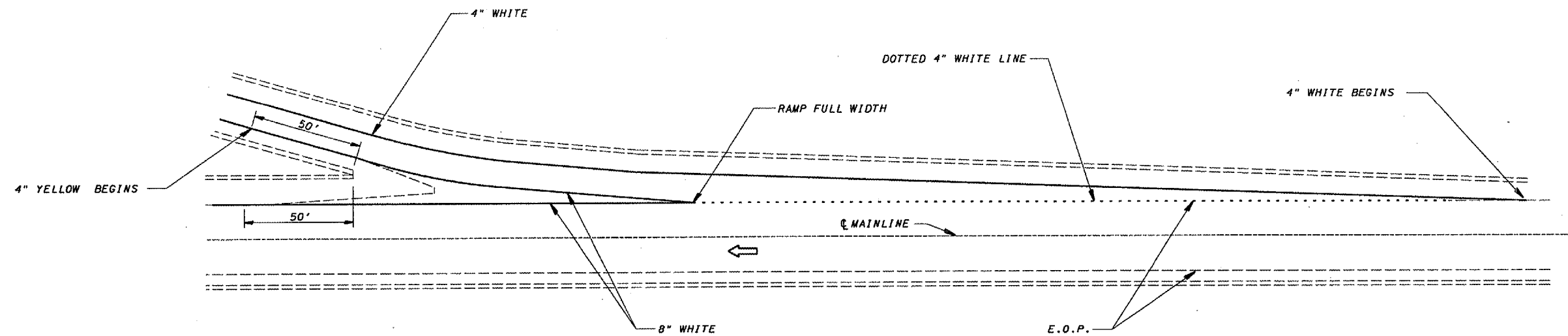
F.A.I. RTE.	SECTION	COUNTY	TOTAL SHEETS	SHEET NO.
57	(27-38)I-1 & (27-1)I-2	FORD	14	14
ILLINOIS				



TYPICAL PAVEMENT MARKING FOR ENTRANCE RAMP TERMINALS



TYPICAL PAVEMENT MARKINGS



TYPICAL PAVEMENT MARKINGS FOR EXIT RAMP TERMINALS

REVISIONS	
NAME	DATE

ILLINOIS DEPARTMENT OF TRANSPORTATION
TYPICAL PAVEMENT MARKINGS
 FAI 57
 SEC: (27-38)I-1 & (27-1)I-2
 FORD COUNTY

DATE 04/05/2006

DRAWN BY RLW

Date: April 15, 2006
 File Name: c:\projects\main\07\con008\detail.dgn