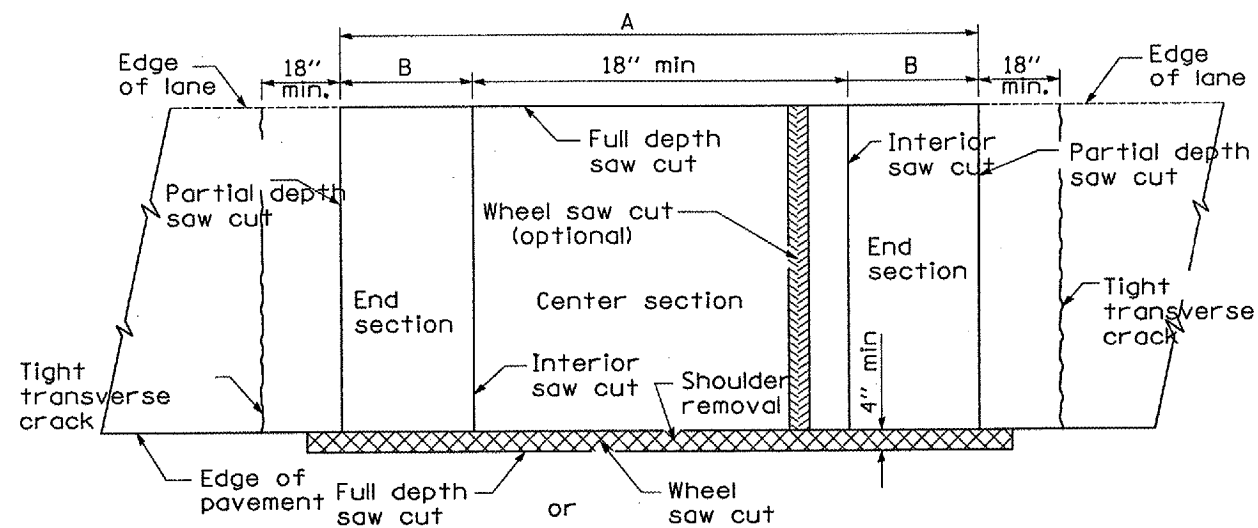
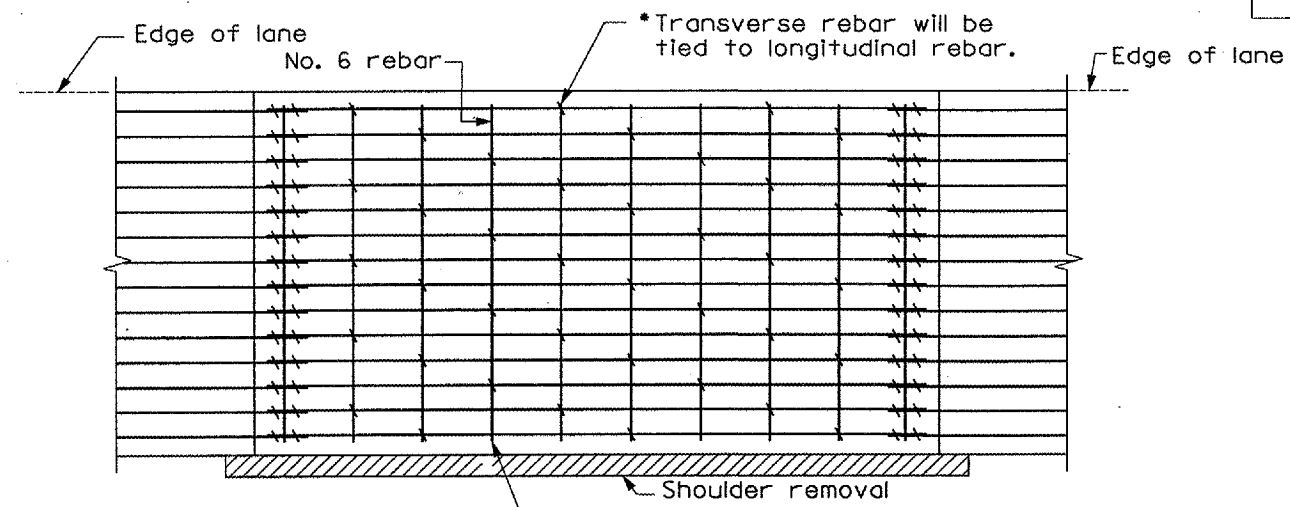


F.A.P. RTE.	SECTION	COUNTY	TOTAL SHEETS	SHEET NO.
330	(1R)1	KANKAKEE	9	8
ILLINOIS				



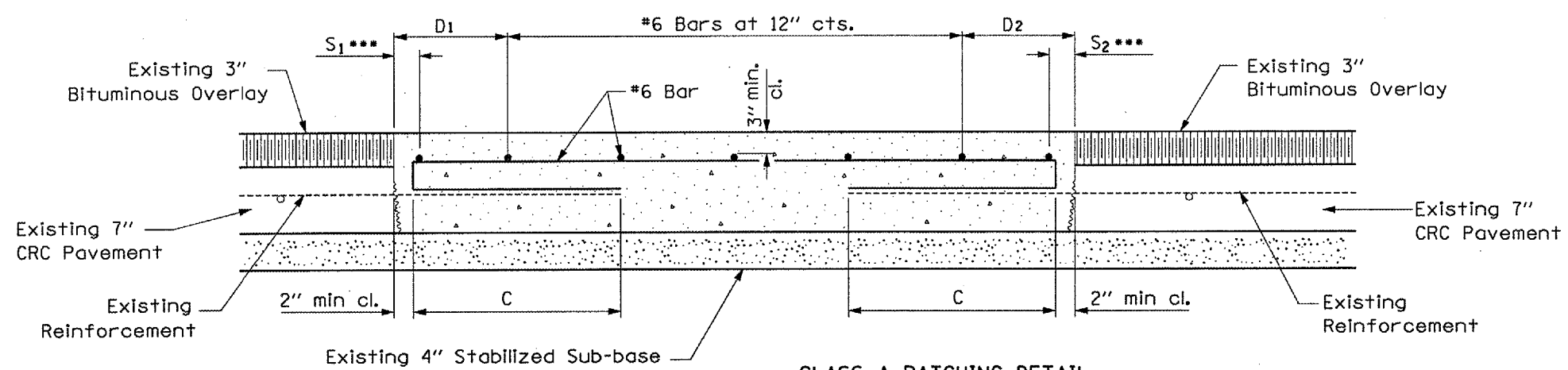
PAVEMENT SAWING DETAIL
(BITUMINOUS SHOULDER)



PAVEMENT REINFORCEMENT DETAIL

Transverse rebar will extend to outer longitudinal rebar while providing a minimum 3" clearance from existing pavement edge.

EXISTING LONGITUDINAL REINFORCEMENT BARS	A (min.)	B (min.)	C (min.)
No. 6	6'-0"	21"	22"



CLASS A PATCHING DETAIL

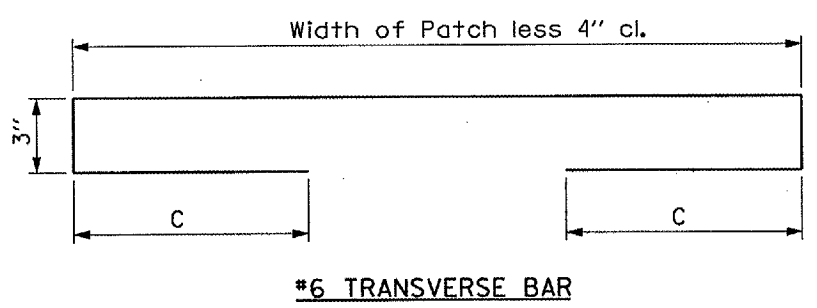
- * Every 3rd intersection must be tied.
- ** Lap new reinforcement with existing longitudinal reinforcement
- *** Variable: Where S₁ and S₂ are 2 1/2" min. and 12" max. D₁ = 2(S₁) and D₂ = 2(S₂).

GENERAL NOTES

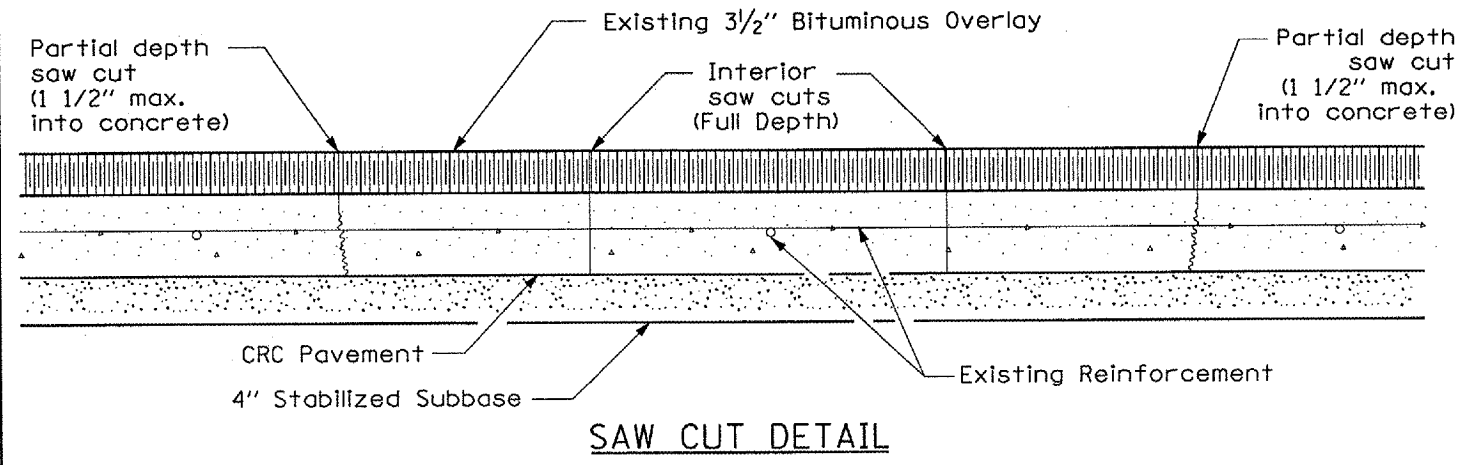
When patching two adjacent lanes in one operation, the longitudinal joint shall be a sawed longitudinal joint as detailed on Standard 420001; however, the groove shall be either preformed or sawed. Tie bars shall only be included for patches 6.0 m (20') or longer.

REVISIONS	
NAME	DATE

ILLINOIS DEPARTMENT OF TRANSPORTATION
CLASS A PATCHING DETAIL
FAP 41 (IL 17)
SECTION: (1R)1
KANKAKEE COUNTY



#6 TRANSVERSE BAR



SAW CUT DETAIL

Date: April 25, 2005
 File Name: C:\pro\pav\cme\m7\con318\detail.dgn