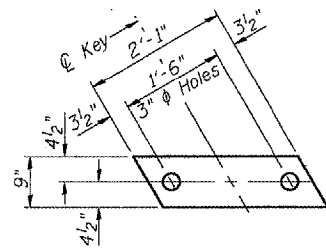
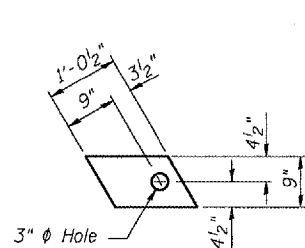


STATE OF ILLINOIS
DEPARTMENT OF TRANSPORTATION

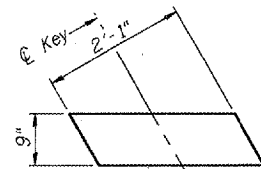
ROUTE NO.	SECTION	COUNTY	DATE	SHEET NO.
		Tozowall		15
CONTRACT NO. 68484				11 SHEETS



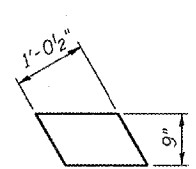
FABRIC BEARING PAD
(Interior)



FABRIC BEARING PAD
(Exterior)



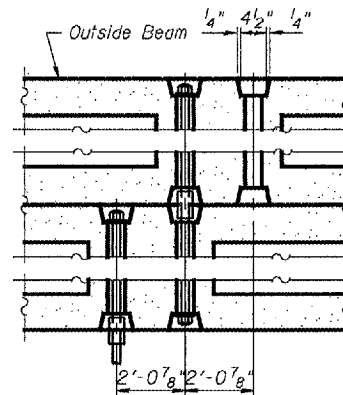
FABRIC BEARING PAD
(Interior)



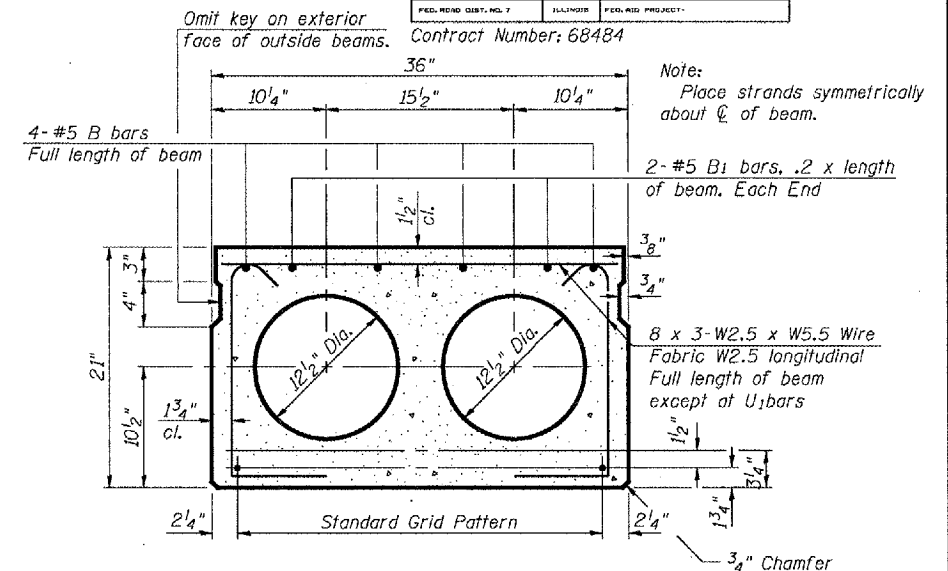
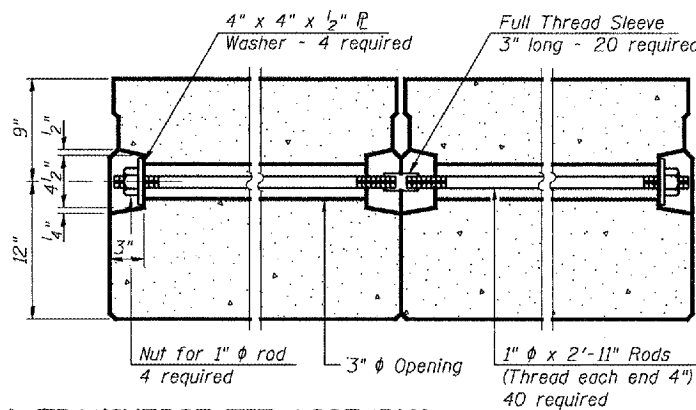
FABRIC BEARING PAD
(Exterior)

FIXED

EXPANSION

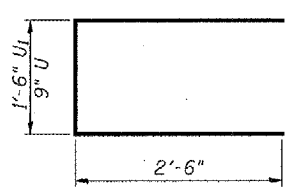


TYPICAL TRANSVERSE TIE ASSEMBLY



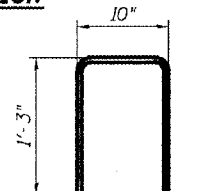
TYPICAL SECTION

1/2" ϕ Strands, Each Strand Stressed to 30,900 Lbs.
6-Strands 1 3/4" up, 4-Strands 3/4" up

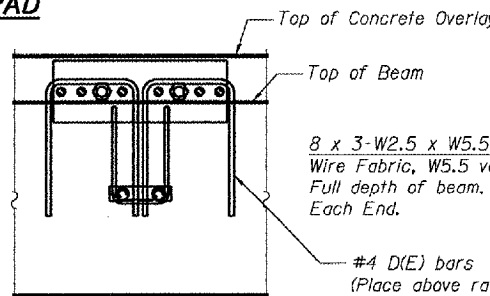


BAR U AND U1

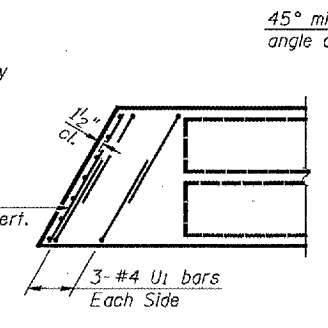
1'-6" Lifting loops
2 each end



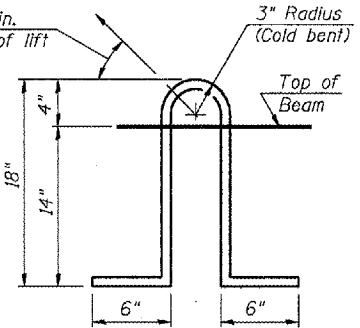
BAR D (E)



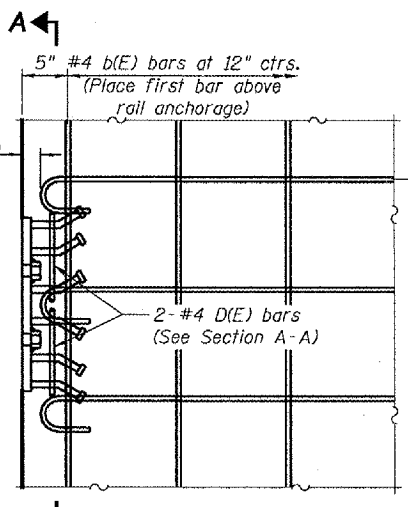
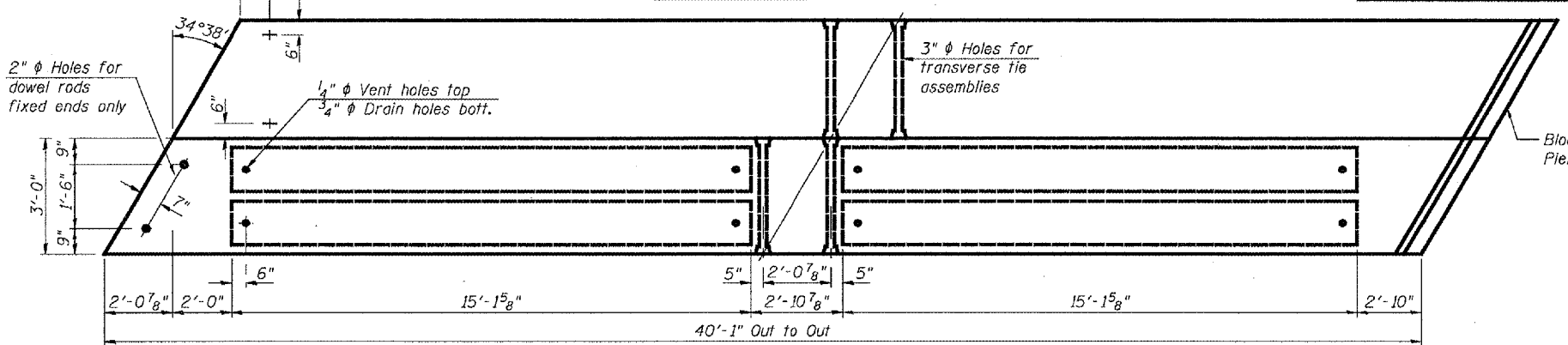
SECTION A-A



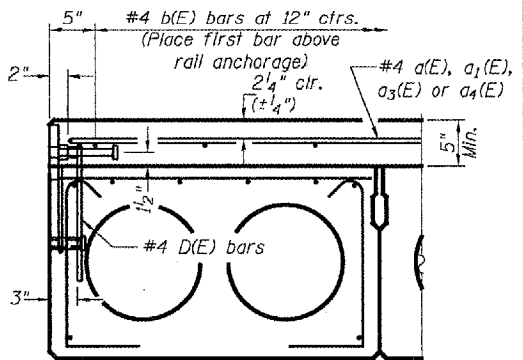
FIXED END PLAN



LIFTING LOOP DETAIL

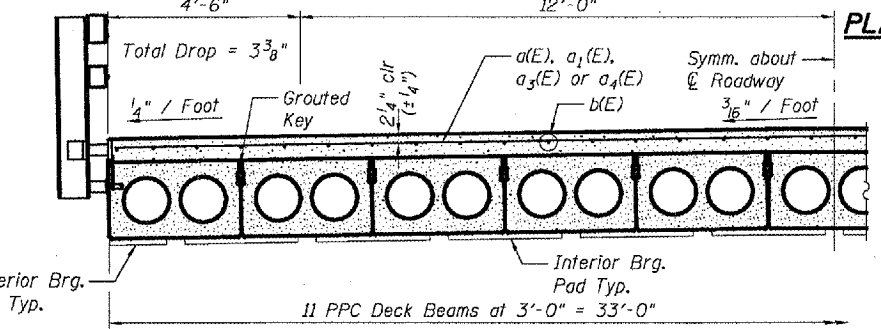


PARTIAL DECK PLAN AT RAIL ANCHORAGE

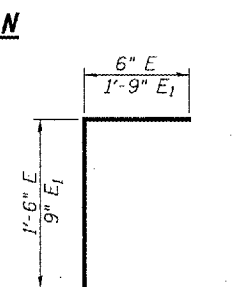


FASCIA BEAM

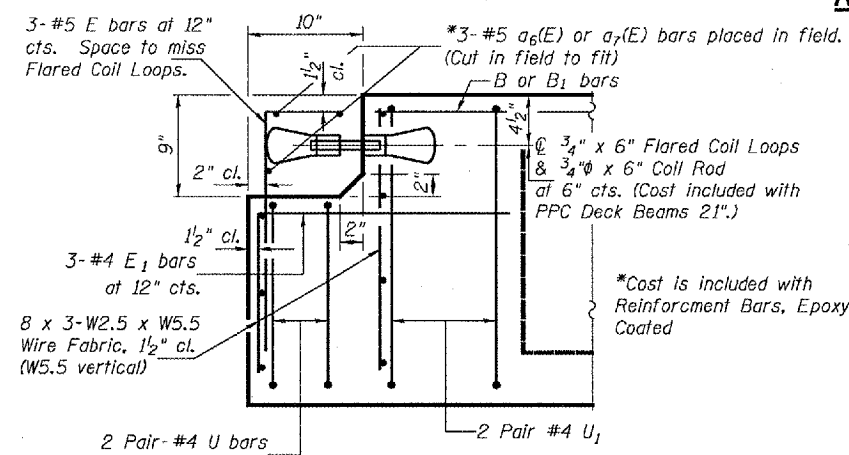
Rail anchorage shall be cast in precast beams. See typical section for dimensions, strand pattern, and bar callouts not shown. Formwork necessary for the wearing surface may be secured utilizing the bottom rail inserts and/or additional inserts cast into the beam. Drilling into the beam will not be permitted.



HALF CROSS SECTION



BAR E AND E1



EXPANSION END OF BEAM

NOTES

Prestressing steel shall be uncoated high strength, low relaxation 7-wire strand, Grade 270. The nominal diameter shall be 1/2" and the nominal cross-sectional area shall be 0.153 sq. in. Lifting loops shall be 2 - 1/2" ϕ 270 ksi strands, as shown. The 1" ϕ rods in the transverse tie assembly shall be tightened to a snug fit and the threads set. Pockets that receive transverse tie bar on outside shall be filled with grout after transverse tie assembly is in place. The bearing seat surfaces shall be adjusted by shimming to assure firm and even bearing. Two 1/8" fabric adjusting shims of the dimensions of the Exterior Bearing Pad shall be provided for each bearing. Keyway surfaces shall be cleaned to remove form oil or other bond breaking material prior to shipment of the beams. Cleaning shall be done by sandblasting the keyway areas between top of the beam and the bottom edge of the key. Corrosion Inhibitor, as covered in the Special Provisions, shall be used in the concrete for precast prestressed concrete deck beams. Required Release Strength, f'ci, shall be 4000 p.s.i. See sheet 7 of 11 for Rail Anchorage Locations.

BILL OF MATERIAL

Precast Prestressed Conc. Deck Bms. (21" Depth)	Sq. Ft.	2,646
---	---------	-------

DECK BEAM DETAILS
IL 122 / SUGAR CREEK
TAZEWELL COUNTY
SN 090-0058

DESIGNED	P.S.J.
CHECKED	S.J.B.
DRAWN	Drew Christopher
CHECKED	P.S.J. S.J.B.

April 24, 2006
EXAMINED *John A. Morris*
ENGINEER OF STRUCTURAL SERVICES
PASSED *Walsh E. Anderson*
ENGINEER OF BRIDGES AND STRUCTURES