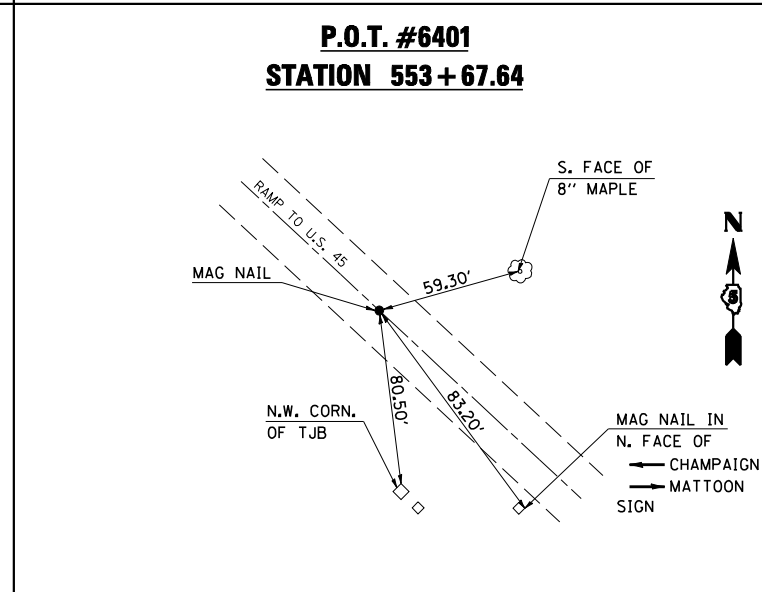
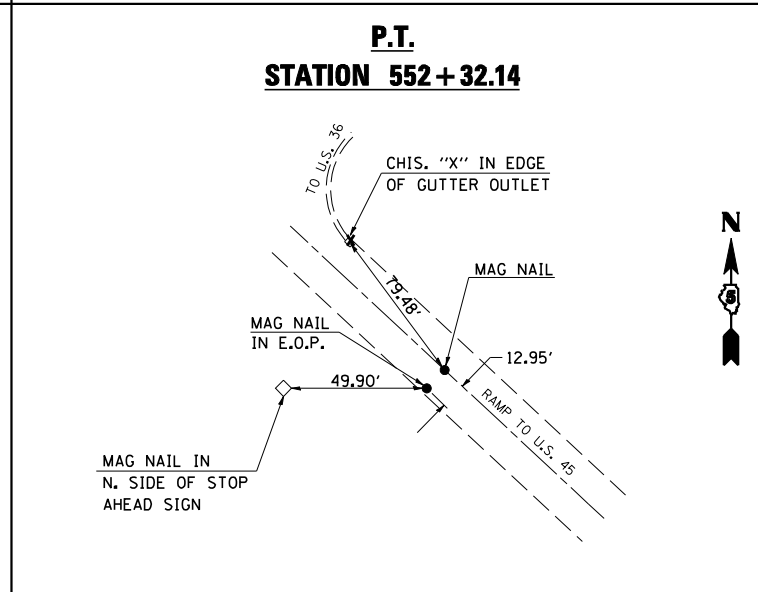
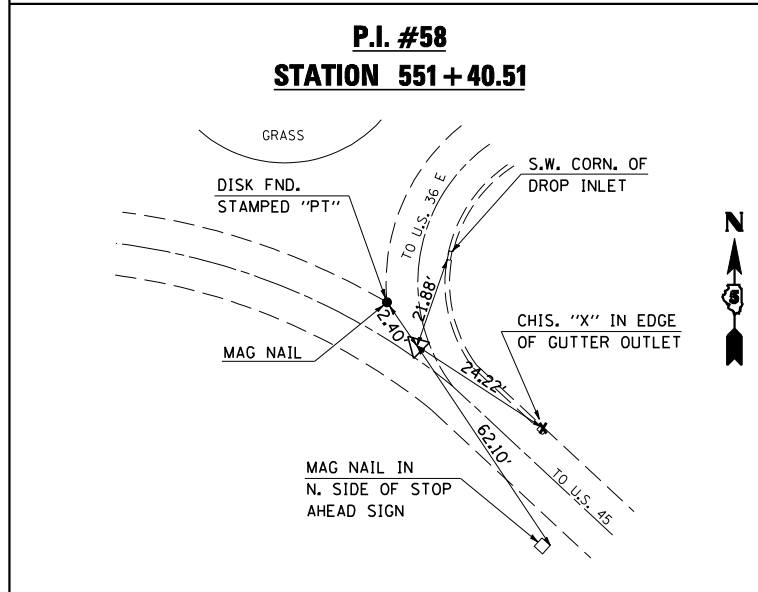
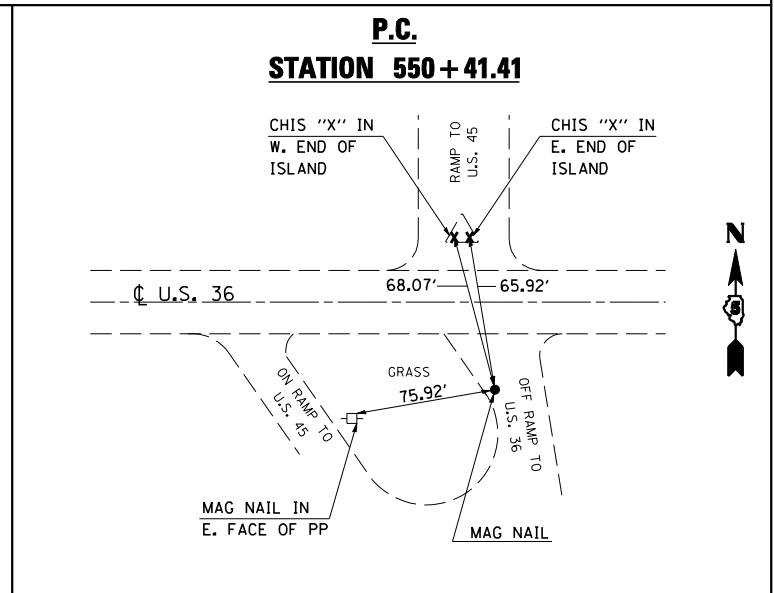
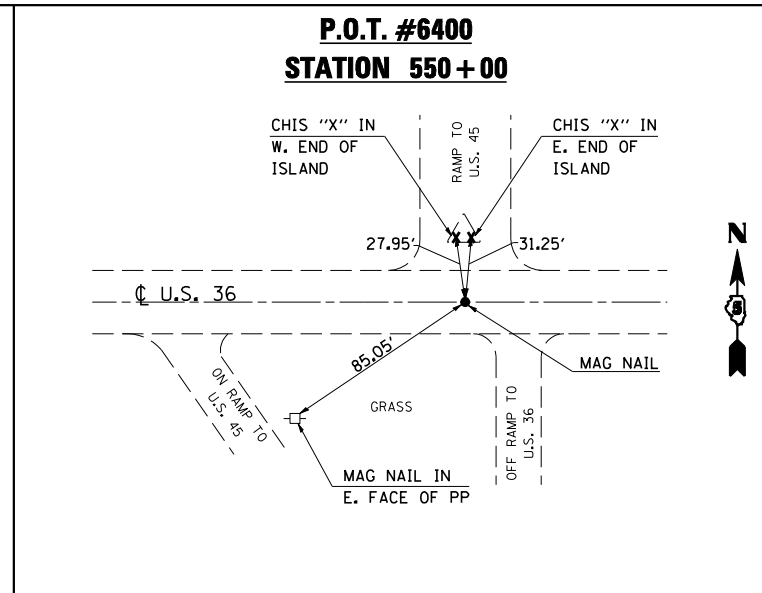
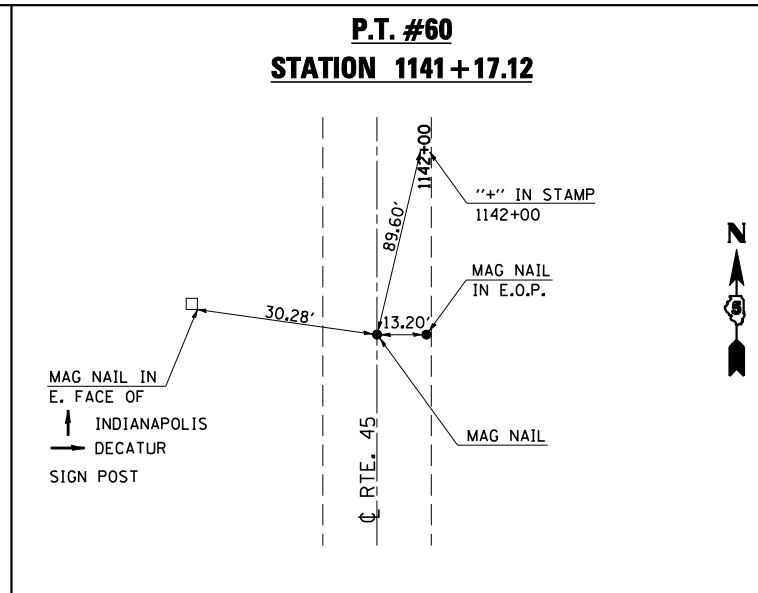
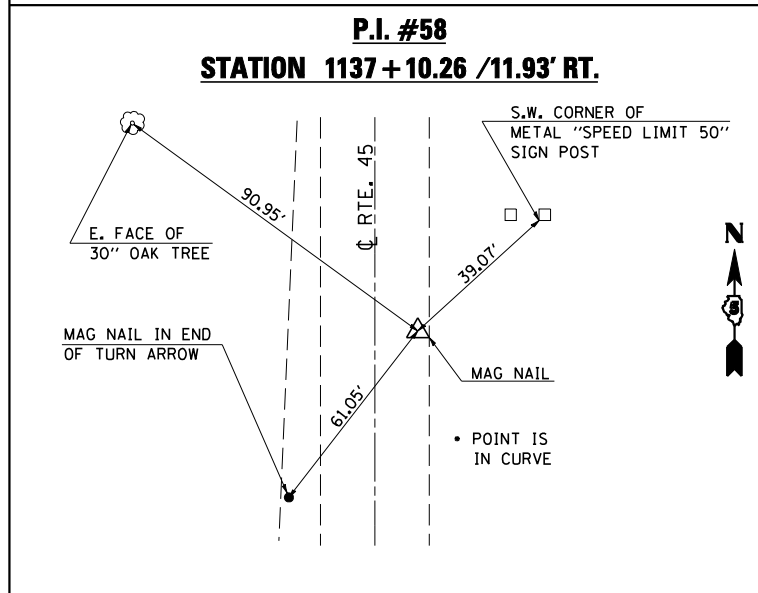


F.A.S. RTE.	SECTION	COUNTY	TOTAL SHEETS	SHEET NO.
1671		DOUGLAS	181	20
STA.		TO STA.		
FED. ROAD DIST. NO.	ILLINOIS	FED. AID PROJECT		
• 144SBR-2 & 22VBR-1				

# TIE POINTS



PLOT DATE = 7/10/2006  
 FILE NAME = c:\projects\144SBR-2 & 22VBR-1\144SBR-2 & 22VBR-1.dgn  
 USER NAME = pier.sombir

ILLINOIS DEPARTMENT OF TRANSPORTATION  
**TIE POINTS & BENCHMARKS**  
 F.A.S. ROUTE 1671 (U.S. ROUTE 45)  
 SECTION 144SBR-2 & 22VBR-1  
 DOUGLAS COUNTY  
*Sheet 2 of 2*

SCALE: NOT TO SCALE  
 DATE: 06/09/06  
 DRAWN BY: B.B.P.  
 CHECKED BY: C.R.G.