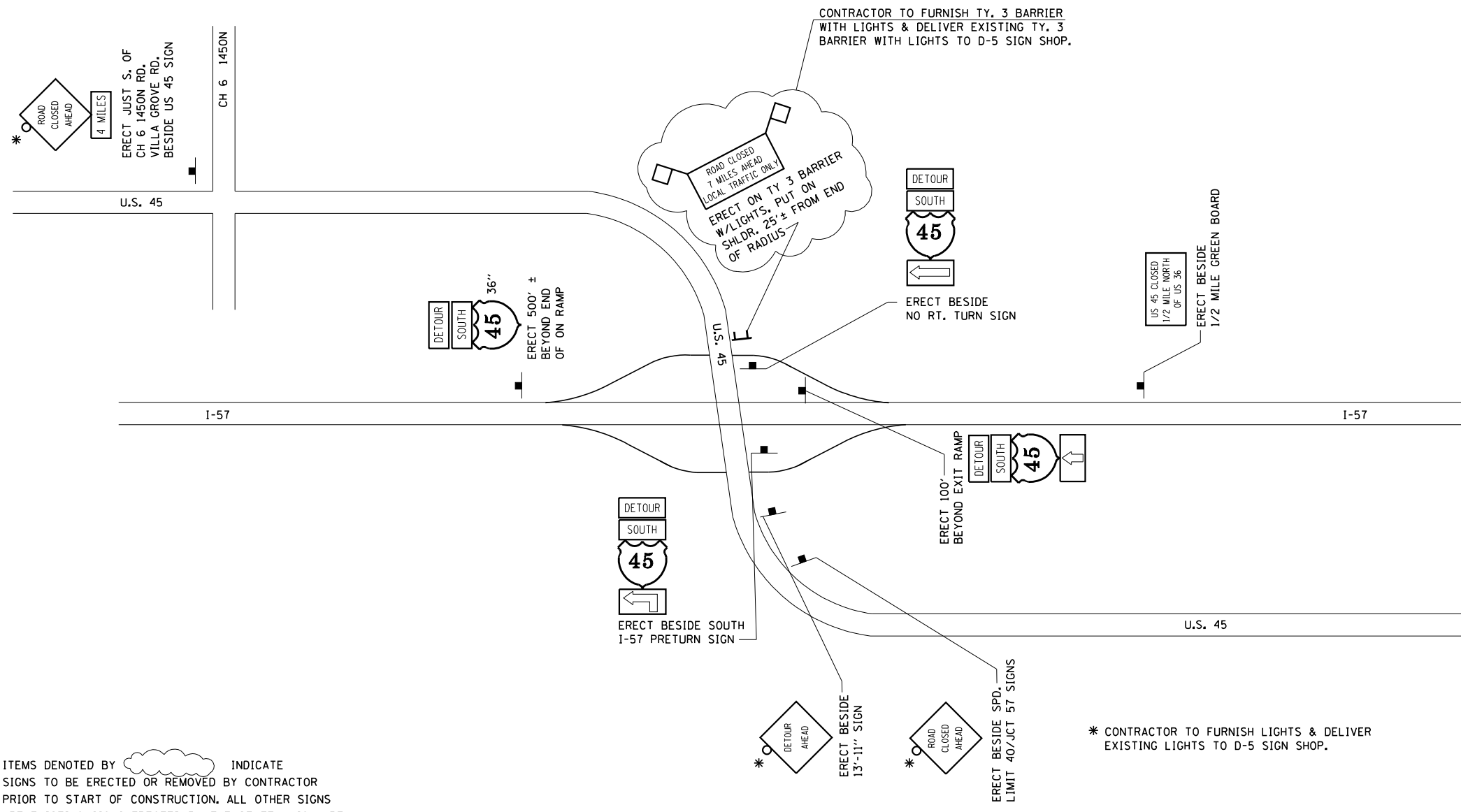


F.A.S. RTE.	SECTION	COUNTY	TOTAL SHEETS	SHEET NO.
1671		DOUGLAS	181	25
STA.		TO STA.		
FED. ROAD DIST. NO.	ILLINOIS	FED. AID PROJECT		

• 144SBR-2 & 22VBR-1



ITEMS DENOTED BY INDICATE SIGNS TO BE ERECTED OR REMOVED BY CONTRACTOR PRIOR TO START OF CONSTRUCTION. ALL OTHER SIGNS ARE EXISTING SIGNS ERECTED BY THE STATE WHICH ARE TO REMAIN IN PLACE FOR DURATION OF DETOUR.

THIS WORK TO PAID FOR AS:
"TRAFFIC CONTROL & PROTECTION (DETOUR)"

* CONTRACTOR TO FURNISH LIGHTS & DELIVER EXISTING LIGHTS TO D-5 SIGN SHOP.

PLOT DATE = 7/10/2006
 FILE NAME = c:\projects\144SBR-2\144SBR-2\1671\1671.dgn
 USER NAME = p1er_sonbr

ILLINOIS DEPARTMENT OF TRANSPORTATION
DETOUR SIGNING DETAIL
U.S. 45 AT F.A.I. 57 - PESOTUM
 F.A.S. ROUTE 1671 (U.S. ROUTE 45)
 SECTION 144SBR-2 & 22VBR-1
 DOUGLAS COUNTY

SCALE: NOT TO SCALE
 DATE: 06/05/06

DRAWN BY: B.B.P.
 CHECKED BY: C.R.G.