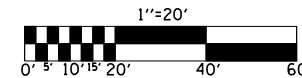


F.A.S. RTE.	SECTION	COUNTY	TOTAL SHEETS	SHEET NO.
1671	.	DOUGLAS	181	64
STA. 1132+50.00		TO STA. 1138+50.57		
FED. ROAD DIST. NO.	ILLINOIS	FED. AID PROJECT		

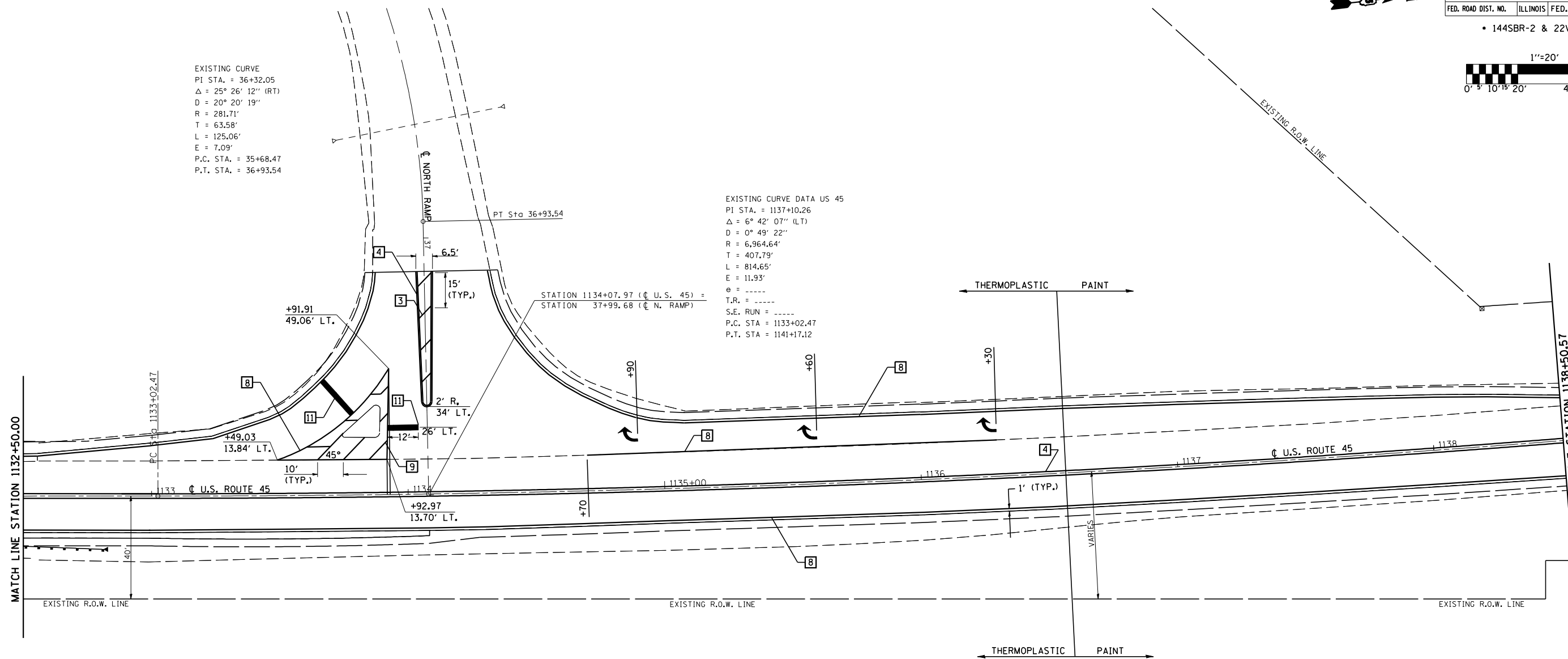
• 144SBR-2 & 22VBR-1



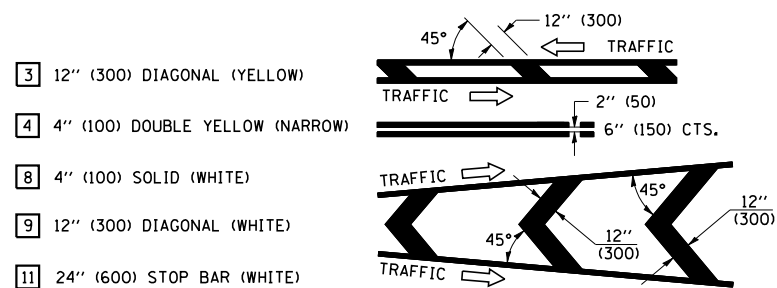
SEC. 33, T. 16 N., R. 8 E. OF THE 3rd P.M.

EXISTING CURVE  
 PI STA. = 36+32.05  
 $\Delta$  = 25° 26' 12" (RT)  
 D = 20° 20' 19"  
 R = 281.71'  
 T = 63.58'  
 L = 125.06'  
 E = 7.09'  
 P.C. STA. = 35+68.47  
 P.T. STA. = 36+93.54

EXISTING CURVE DATA US 45  
 PI STA. = 1137+10.26  
 $\Delta$  = 6° 42' 07" (LT)  
 D = 0° 49' 22"  
 R = 6,964.64'  
 T = 407.79'  
 L = 814.65'  
 E = 11.93'  
 e = .....  
 T.R. = .....  
 S.E. RUN = .....  
 P.C. STA. = 1133+02.47  
 P.T. STA. = 1141+17.12



TYPICAL PAVEMENT MARKING LEGEND



SEC. 34, T. 16 N., R. 8 E. OF THE 3rd P.M.

ILLINOIS DEPARTMENT OF TRANSPORTATION  
**PAVEMENT MARKING PLAN**  
 F.A.S. ROUTE 1671 (U.S. ROUTE 45)  
 SECTION 144SBR-2 & 22VBR-1  
 DOUGLAS COUNTY

SCALE: 1" = 20'-0"  
 DATE: 06/08/06

DRAWN BY: B.B.P.  
 CHECKED BY: C.R.G.

PLOT DATE = 7/10/2006  
 FILE NAME = G:\projects\0505202 (v8)\70258pavmark.dgn  
 PLOT DATE = 02/25/23 / IN.  
 USER NAME = pier.sombir