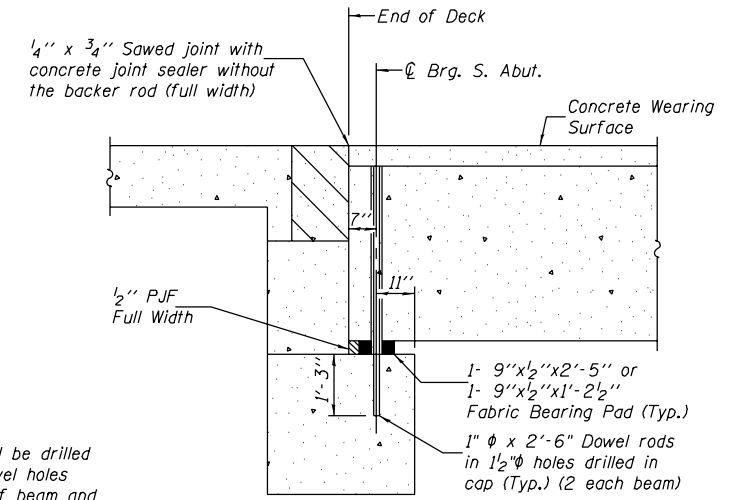
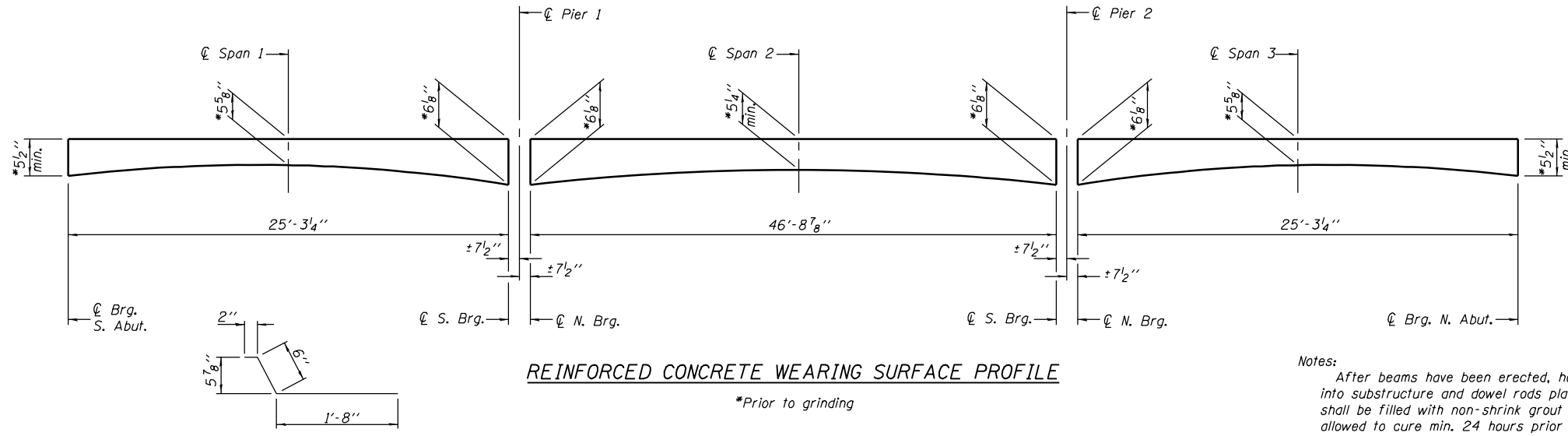


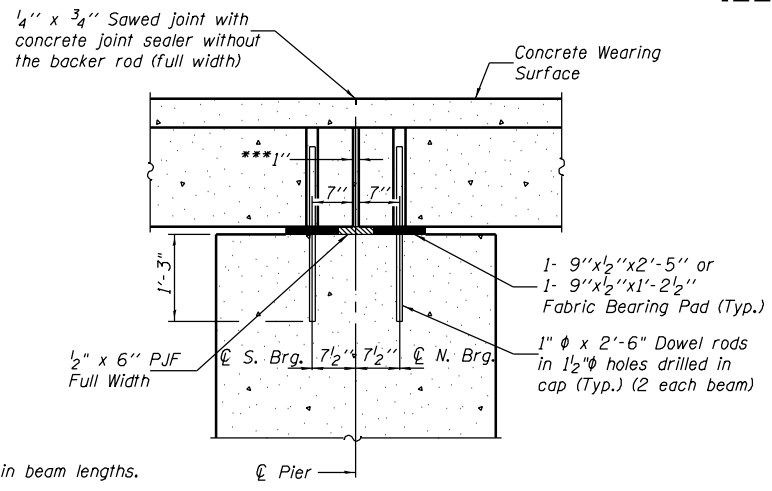
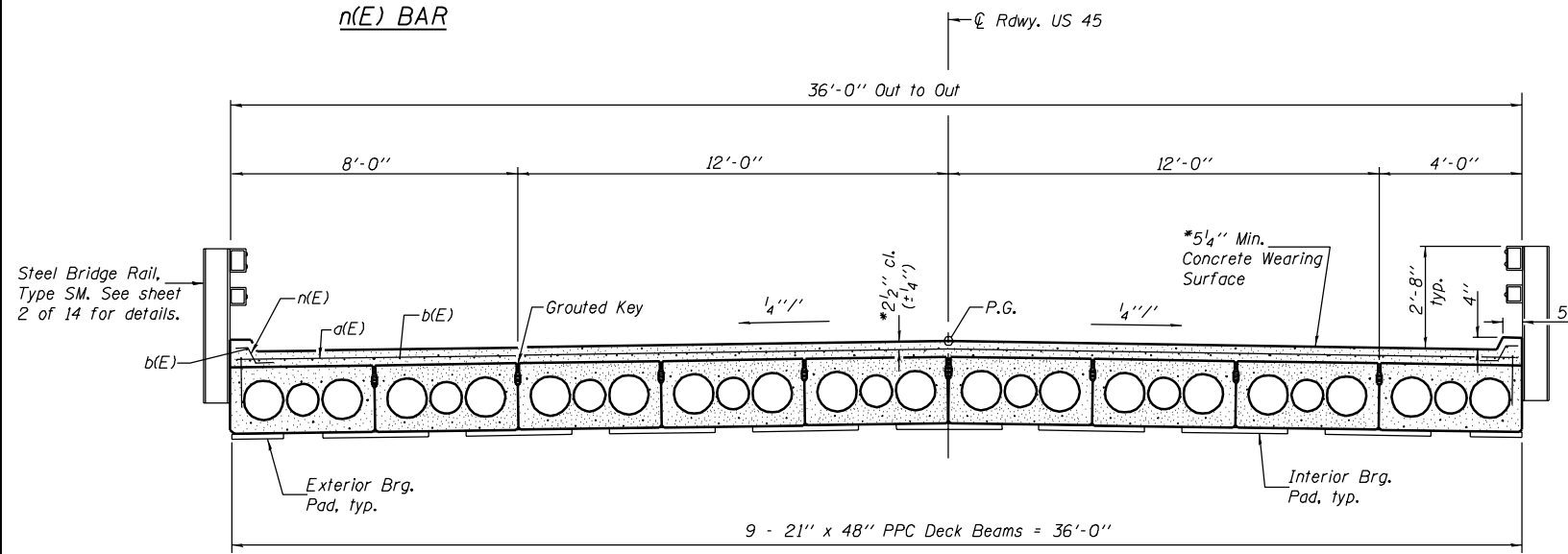
STATE OF ILLINOIS
DEPARTMENT OF TRANSPORTATION

ROUTE NO.	SECTION	COUNTY	SPAN SHEETS	SHEET NO.	SHEET NO. 6 14 SHEETS
FAS 1671	**	DOUGLAS	181	76	
FED. ROAD DIST. NO. 7	ILLINOIS	FED. AID PROJECT			

Contract #70258 **144SBR-2 & 22VBR-1



Notes:
After beams have been erected, holes shall be drilled into substructure and dowel rods placed. Dowel holes shall be filled with non-shrink grout to top of beam and allowed to cure min. 24 hours prior to grouting the shear keys.
See sheets 7 and 8 of 14 for Fabric Bearing Pad Details. Concrete Wearing Surface to be poured after grouting the shear keys.
Dowel rods drilled in cap are included in the cost of Precast Prestressed Concrete Deck Beams (21" Depth).
Hatched areas to be poured after concrete wearing surface is in place. Quantity included with Concrete Structures on sheet 11 of 14.

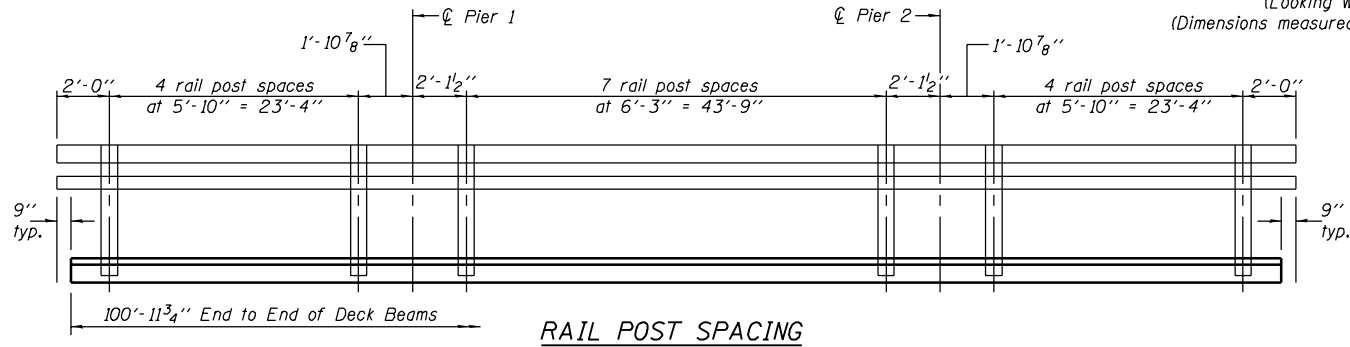
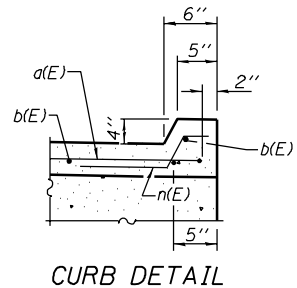


**SUPERSTRUCTURE
BILL OF MATERIAL**

Bar	No.	Size	Length	Shape	
a(E)	97	#4	36'-8"	C	
a1(E)	2	#4	35'-11"	—	
b(E)	114	#4	34'-8"	—	
n(E)	194	#4	2'-4"	L	
Reinforcement Bars, Epoxy Coated				Pound	5370
Concrete Wearing Surface				Sq. Yd.	403.9

Reinforcement bars designated (E) shall be epoxy coated.

MIN. BAR LAP
#4 bar = 1'-8"



DESIGNED	SMR
CHECKED	PRL
DRAWN	BECKY M. LEACH
CHECKED	SMR/PRL

August 4, 2006
EXAMINED *Thomas J. Domagalaki*
PRINCIPAL ENGINEER OF BRIDGE DESIGN
PASSED *Ralph E. Anderson*
ENGINEER OF BRIDGES AND STRUCTURES

SUPERSTRUCTURE DETAILS
F.A.S. ROUTE 1671 - SECTION 144SBR-2
DOUGLAS COUNTY
STATION 1130+72.93
STRUCTURE NO. 021-0062