

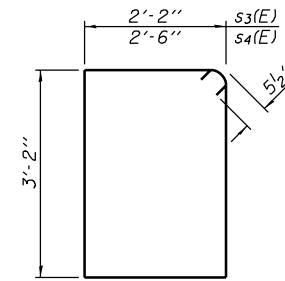
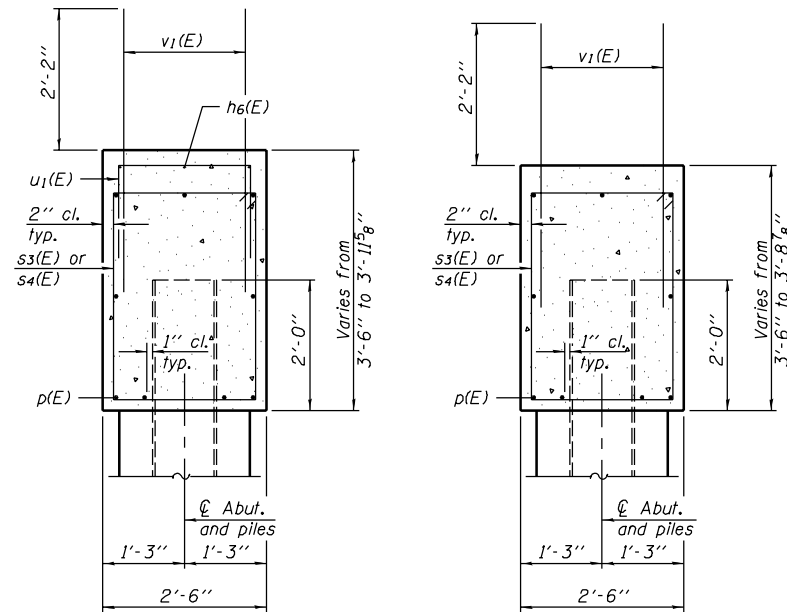
Contract #70258
‡ 22VBR-1 and 144SBR-2

**SOUTH ABUTMENT
BILL OF MATERIAL**

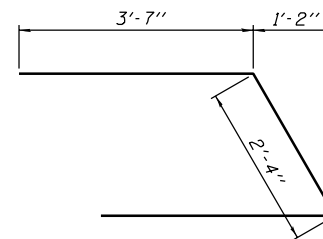
Bar	No.	Size	Length	Shape
h(E)	28	#6	12'-4"	—
h1(E)	2	#5	12'-6"	—
h2(E)	30	#6	13'-1"	—
h3(E)	2	#5	13'-4"	—
h6(E)	6	#5	14'-10"	—
p(E)	9	#7	40'-3"	—
s3(E)	34	#5	11'-7"	□
s4(E)	2	#5	12'-3"	□
u(E)	8	#6	9'-6"	∇
u1(E)	27	#5	4'-8"	□
v1(E)	72	#5	4'-4"	—
v2(E)	11	#5	11'-3"	—
v3(E)	12	#5	11'-11"	—
Concrete Structures	Cu. Yd.		19.4	
Reinforcement Bars, Epoxy Coated	Pound		3280	
Furnishing Steel Piles HP 12x53	Foot		330	
Driving Steel Piles	Foot		330	
Test Pile Steel HP 12x53	Each		1	
Structure Excavation	Cu. Yd.		95	

**NORTH ABUTMENT
BILL OF MATERIAL**

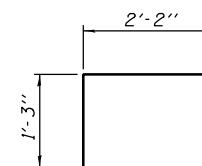
Bar	No.	Size	Length	Shape
h2(E)	30	#6	13'-1"	—
h3(E)	2	#5	13'-4"	—
h4(E)	28	#6	12'-0"	—
h5(E)	2	#5	12'-4"	—
p(E)	9	#7	40'-3"	—
s3(E)	34	#5	11'-7"	□
s4(E)	2	#5	12'-3"	□
u(E)	8	#6	9'-6"	∇
v1(E)	72	#5	4'-4"	—
v4(E)	12	#5	11'-5"	—
v5(E)	11	#5	11'-6"	—
Concrete Structures	Cu. Yd.		18.5	
Reinforcement Bars, Epoxy Coated	Pound		3040	
Furnishing Steel Piles HP 12x63	Foot		325	
Driving Steel Piles	Foot		325	
Test Pile Steel HP 12x63	Each		1	
Structure Excavation	Cu. Yd.		95	



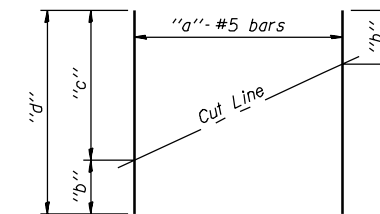
BARS s3(E) & s4(E)



BAR u(E)



BAR u1(E)

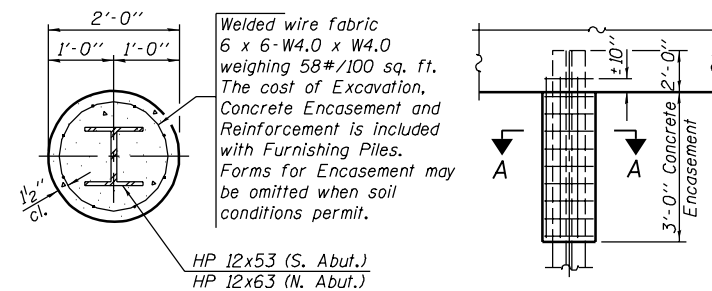


FIELD CUTTING DIAGRAM
Order v2(E) thru vs(E) full length. Cut as shown and use remainder of bars in opposite face.

Bar	"a"	"b"	"c"	"d"
v2(E)	11	3'-10"	7'-5"	11'-3"
v3(E)	12	4'-0"	7'-11"	11'-11"
v4(E)	12	3'-9"	7'-8"	11'-5"
v5(E)	11	4'-0"	7'-6"	11'-6"

SECTION THRU
SOUTH ABUTMENT

SECTION THRU
NORTH ABUTMENT



SECTION A-A

PILE ENCASEMENT DETAIL

DESIGNED	Curt M. Evoy
CHECKED	Rebecca L. Tharp
DRAWN	Michael B. Mossman
CHECKED	C.M.E. / R.L.T.

EXAMINED	Thomas J. Domagala	August 4, 2006
PASSED	Ralph E. Anderson	

ABUTMENT DETAILS
F.A.S. RT. 1671 - SEC. 22VBR-1
DOUGLAS COUNTY
STATION 1151+65.86
STRUCTURE NO. 021-0061