

STATE OF ILLINOIS  
DEPARTMENT OF TRANSPORTATION

ROUTE NO.	SECTION	COUNTY	TOTAL SHEETS	SHEET NO.
F.A.S. 1671	‡	DOUGLAS	181	106
FED. ROAD DIST. NO. 7	ILLINOIS	FED. AID PROJECT		

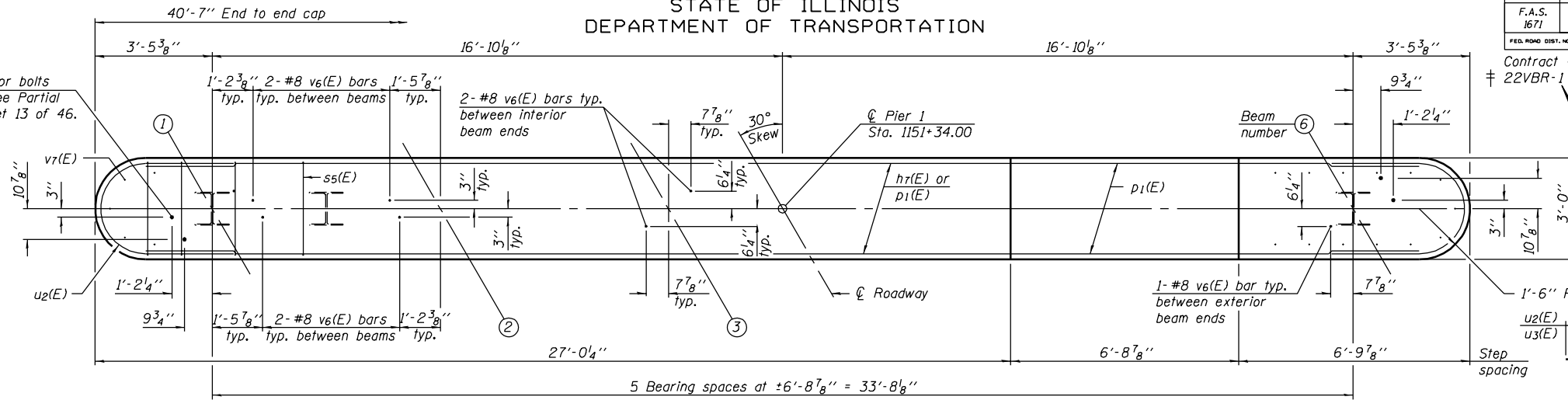
SHEET NO. 22  
46 SHEETS

Notes:  
Space Reinforcement in cap to miss anchor bolts.  
Four steps monolithically with cap.

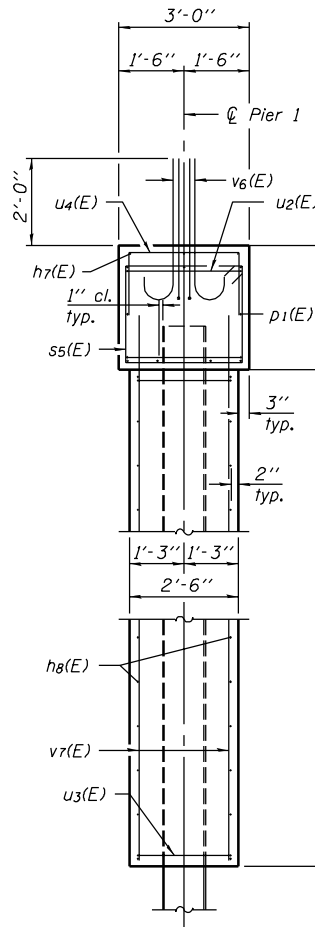
1/2" Ø x 1'-6" Anchor bolts  
For side retainer, see Partial Plan at Pier on sheet 13 of 46.  
(Typ. each end)

PILE DATA

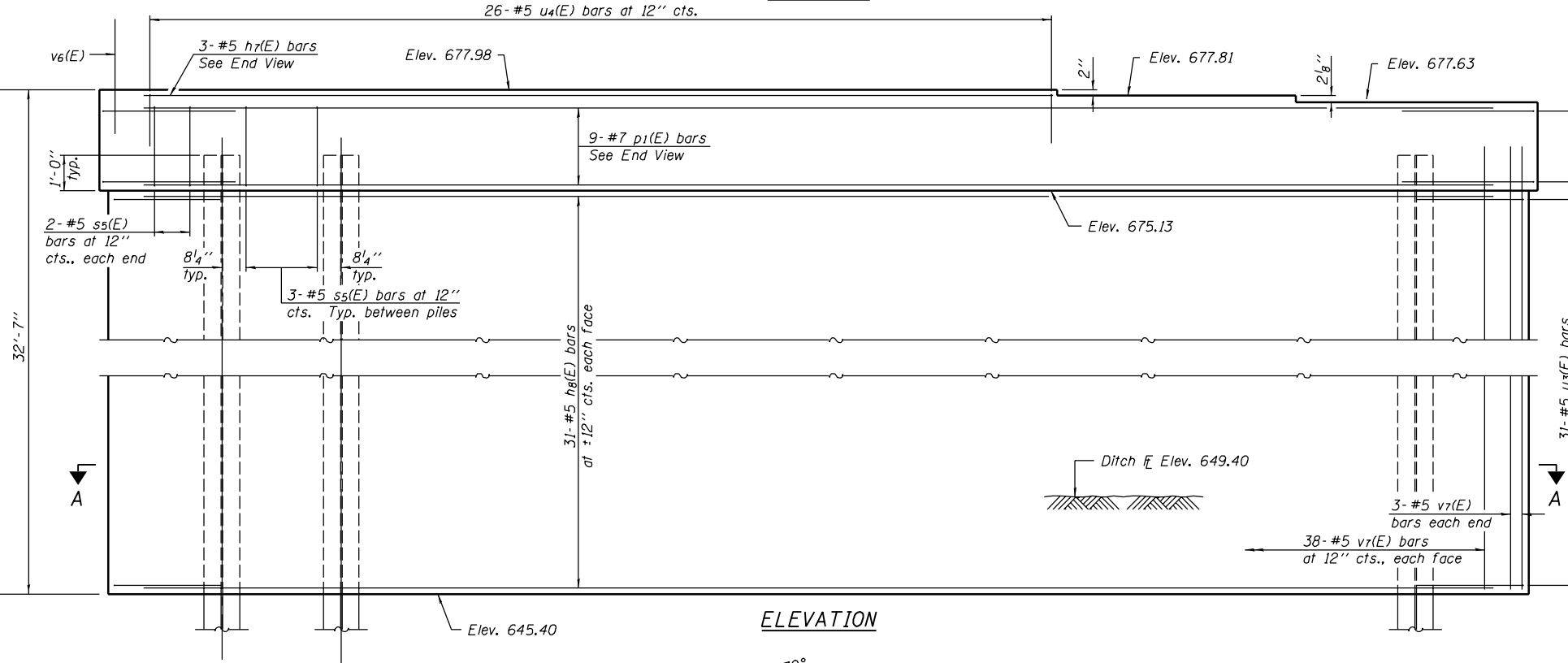
Type: HP 12x53  
Design Capacity: 66.6 Tons  
Required Bearing: 99.8 Tons  
Est. Length: 62'  
No. Req'd: 10 + 1 test pile



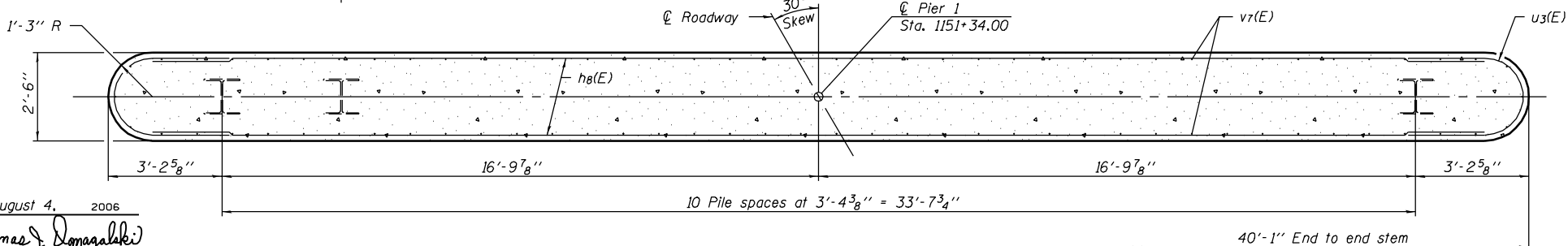
TOP PLAN



END VIEW

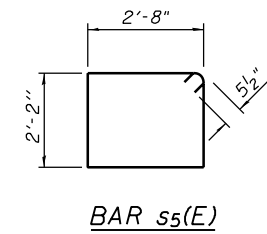


ELEVATION

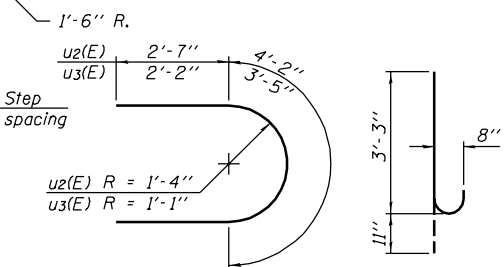


SECTION A-A

Contract #70258  
‡ 22VBR-1 and 144SBR-2

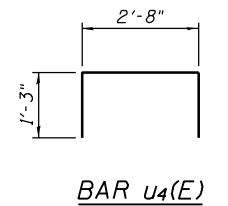


BAR s5(E)



BARS u2(E) & u3(E)

BAR v6(E)



BAR u4(E)

BILL OF MATERIAL

Bar	No.	Size	Length	Shape
h7(E)	3	#5	25'-4"	—
h8(E)	62	#5	37'-7"	—
p1(E)	9	#7	37'-7"	—
ss(E)	34	#5	10'-7"	□
u2(E)	6	#6	9'-4"	—
u3(E)	62	#5	7'-9"	—
u4(E)	26	#5	5'-2"	□
v6(E)	30	#8	4'-2"	—
v7(E)	82	#5	31'-2"	—

Concrete Structures	Cu. Yd.	121.3
Reinforcement Bars, Epoxy Coated	Pound	7300
Structure Excavation	Cu. Yd.	89
Furnishing Steel Piles HP 12x53	Foot	620
Driving Steel Piles HP 12x53	Foot	620
Test Pile Steel HP 12x53	Each	1

Reinforcement Bars designated (E) shall be epoxy coated.

PIER 1  
F.A.S. RT. 1671 - SEC. 22VBR-1  
DOUGLAS COUNTY  
STATION 1151+65.86  
STRUCTURE NO. 021-0061

DESIGNED	Curt M. Evoy
CHECKED	Rebecca L. Tharp
DRAWN	Michael B. Mossman
CHECKED	C.M.E. / R.L.T.

August 4, 2006	EXAMINED	Thomas J. Domagala
	PASSED	Ralph E. Anderson