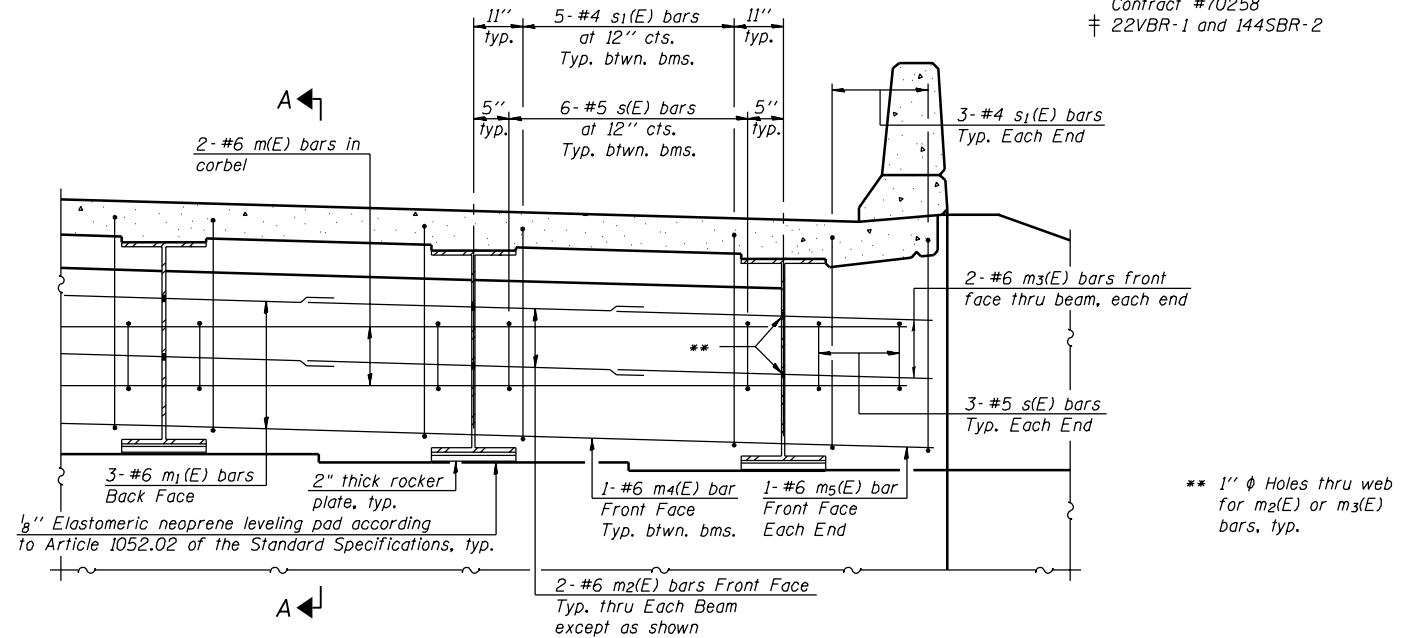


ROUTE NO.	SECTION	COUNTY	TOTAL SHEETS	SHEET NO.
F.A.S. 1671	‡	DOUGLAS	181	118
FED. ROAD DIST. NO. 7	ILLINOIS	FED. AID PROJECT-		

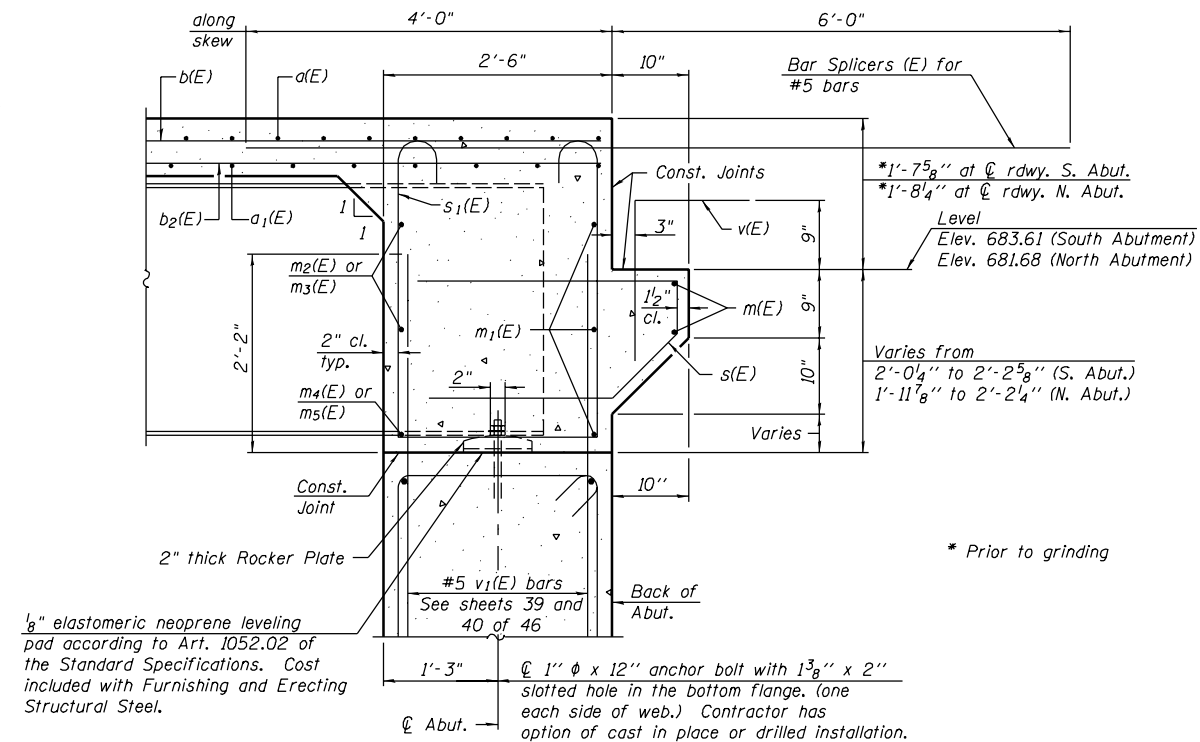
Contract #70258
‡ 22VBR-1 and 144SBR-2



DIAPHRAGM ELEVATION AT ABUTMENT

Notes:
Reinforcement bars in diaphragm are billed with superstructure on sheet 33 of 46.
Concrete in diaphragm is included with Concrete Superstructure on sheet 33 of 46.
For details of bars s(E) & s1(E) see sheet 33 of 46.
The s(E) and s1(E) bars shall be placed parallel to the beams. Spacing for these bars shall be at right angles to the beams.
For anchor bolt details see sheet 38 of 46.
For bar splicer details, see sheet 43 of 46.
See sheet 36 of 46 for holes thru web for m2(E) or m3(E) bars.

MIN. BAR LAP
#6 bar = 2'-9"



SECTION A-A

Dimensions at right angles to abutment, except as shown.

DESIGNED	Curt M. Evoy
CHECKED	Rebecca L. Tharp
DRAWN	Michael B. Mossman
CHECKED	C.M.E. / R.L.T.

EXAMINED	August 4, 2006
PASSED	Thomas J. Domagala ENGINEER OF BRIDGE DESIGN
	Ralph E. Anderson ENGINEER OF BRIDGES AND STRUCTURES

DIAPHRAGM DETAILS
F.A.S. RT. 1671 - SEC. 22VBR-1
DOUGLAS COUNTY
STATION 1154+99.02
STRUCTURE NO. 021-0060