

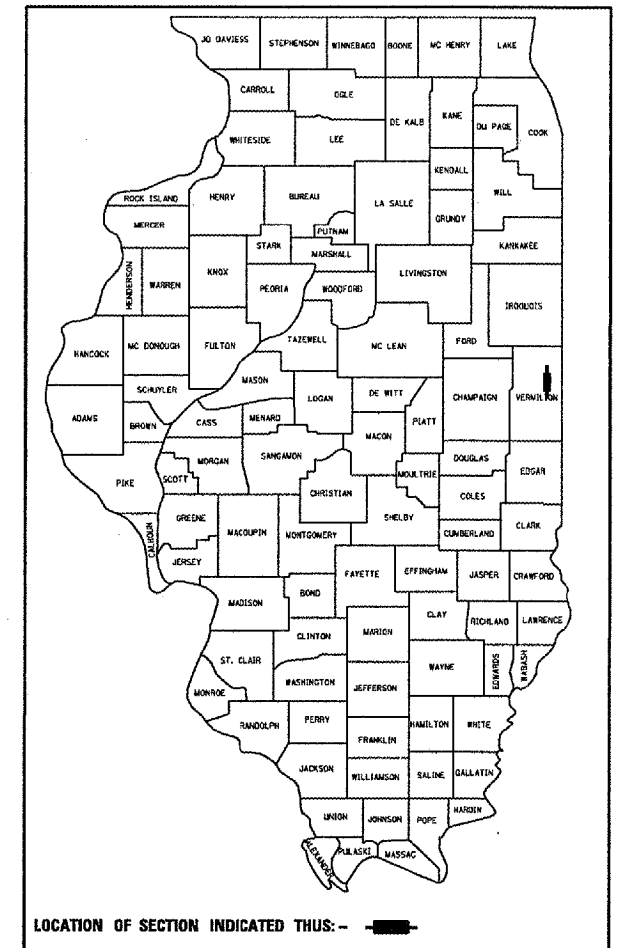
F.A.P. RTE.	SECTION	COUNTY	TOTAL SHEETS	SHEET NO.
332	48B	VERMILION	27	1

CONTRACT NO. 70462
D-95-011-05

STATE OF ILLINOIS
DEPARTMENT OF TRANSPORTATION
DIVISION OF HIGHWAYS
**PROPOSED
HIGHWAY PLANS**

F.A.P. ROUTE 332 (IL 1)
SECTION 48B
VERMILION COUNTY
C-95-011-05
CULVERT REPLACEMENT

FOR INDEX OF SHEETS, SEE SHEET NO. 2
FOR SUMMARY OF QUANTITIES, SEE SHEET NO. 6,7

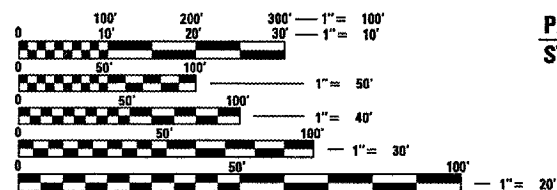
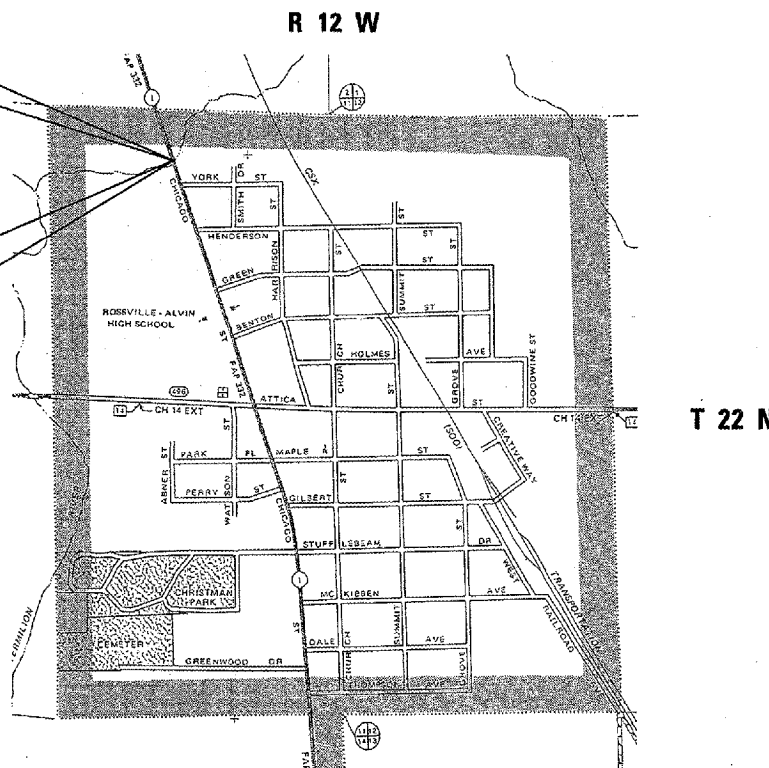


PROJECT ENDS
STA. 824 + 94.00

PROPOSED STRUCTURE NO. 092-8620
STA. 824 + 77.00 PCBC 12'x4'x66'

REMOVAL OF EXISTING STRUCTURE
STA. 824 + 77.00

PROJECT BEGINS
STA. 824 + 60.00



FULL SIZE PLANS HAVE BEEN PREPARED USING STANDARD ENGINEERING SCALES. REDUCED SIZED PLANS WILL NOT CONFORM TO STANDARD SCALES. IN MAKING MEASUREMENTS ON REDUCED PLANS, THE ABOVE SCALES MAY BE USED.

DESIGN DESIGNATION
IL RTE. 1
OTHER PRINCIPAL ARTERIAL
ADT - 5,400 (2005)

FOR UNDERGROUND UTILITY LOCATIONS CALL
TOLL FREE J.U.L.I.E. TELEPHONE NO.
1-800-892-0123
VILLAGE OF ROSSVILLE

STATE OF ILLINOIS
DEPARTMENT OF TRANSPORTATION
DIVISION OF HIGHWAYS

SUBMITTED 3/28/06
Joseph L. Cooney
DEPUTY DIRECTOR OF HIGHWAYS, REGION ENGINEER

May 12, 2006
Mike Hine
ENGINEER OF DESIGN AND ENVIRONMENT

May 12, 2006
Milton R. Sees P.E.
DIRECTOR OF HIGHWAYS, CHIEF ENGINEER

PRINTED BY THE AUTHORITY
OF THE STATE OF ILLINOIS

TOTAL LENGTH OF SECTION & PROJECT = 34.0 FEET = .006 MILES
NET LENGTH OF SECTION & PROJECT = 34.0 FEET = .006 MILES

PROJECT ENGINEER: KENSIL GARNETT
 SQUAD LEADER: ROBERT M. NELSON
 DESIGNER: BENJAMIN SETZER
 (217) 465-4181