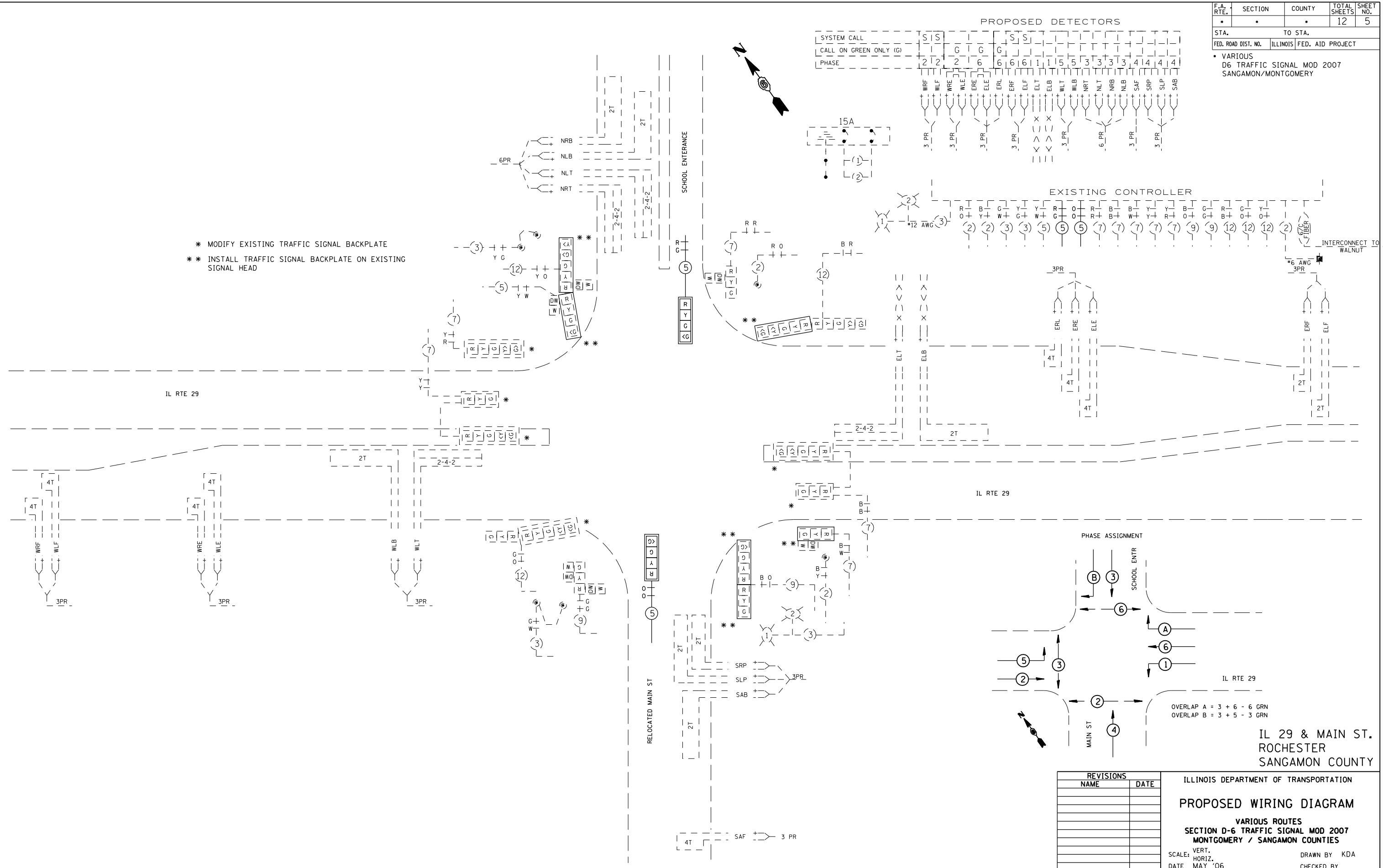


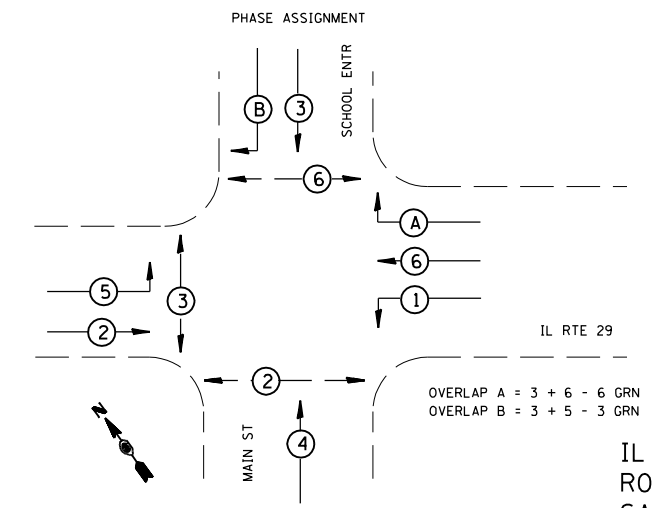
F.A. RTE.	SECTION	COUNTY	TOTAL SHEETS	SHEET NO.
.	.	.	12	5

STA.	TO STA.
FED. ROAD DIST. NO.	ILLINOIS FED. AID PROJECT

VARIOUS D6 TRAFFIC SIGNAL MOD 2007 SANGAMON/MONTGOMERY



- * MODIFY EXISTING TRAFFIC SIGNAL BACKPLATE
- * * INSTALL TRAFFIC SIGNAL BACKPLATE ON EXISTING SIGNAL HEAD



REVISIONS	
NAME	DATE

ILLINOIS DEPARTMENT OF TRANSPORTATION
PROPOSED WIRING DIAGRAM
 VARIOUS ROUTES
 SECTION D-6 TRAFFIC SIGNAL MOD 2007
 MONTGOMERY / SANGAMON COUNTIES
 SCALE: VERT. / HORIZ.
 DATE: MAY '06
 DRAWN BY: KDA
 CHECKED BY:

PLOT DATE = 5/25/2006
 FILE NAME = c:\projects\652506\rochester\ts_sheet.dgn
 PLOT SCALE = 42.352% / IN.
 USER NAME = brehanne