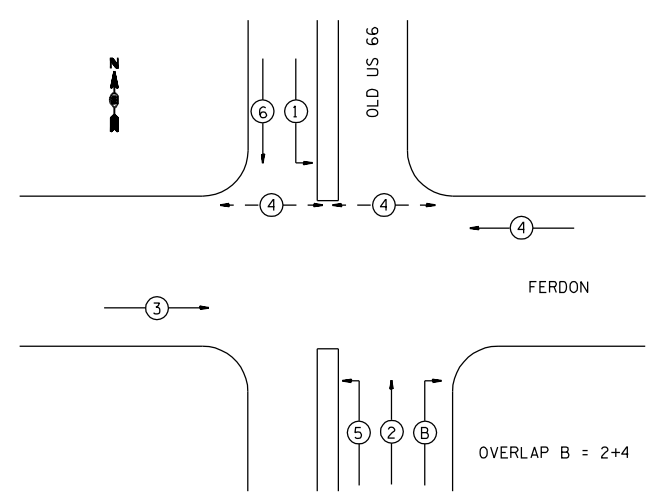


F.A. RTE.	SECTION	COUNTY	TOTAL SHEETS	SHEET NO.
.	.	.	12	7

STA.	TO STA.
FED. ROAD DIST. NO.	ILLINOIS FED. AID PROJECT

VARIOUS  
D6 TRAFFIC SIGNAL MOD 2007  
SANGAMON/MONTGOMERY

PHASE DESIGNATION DIAGRAM

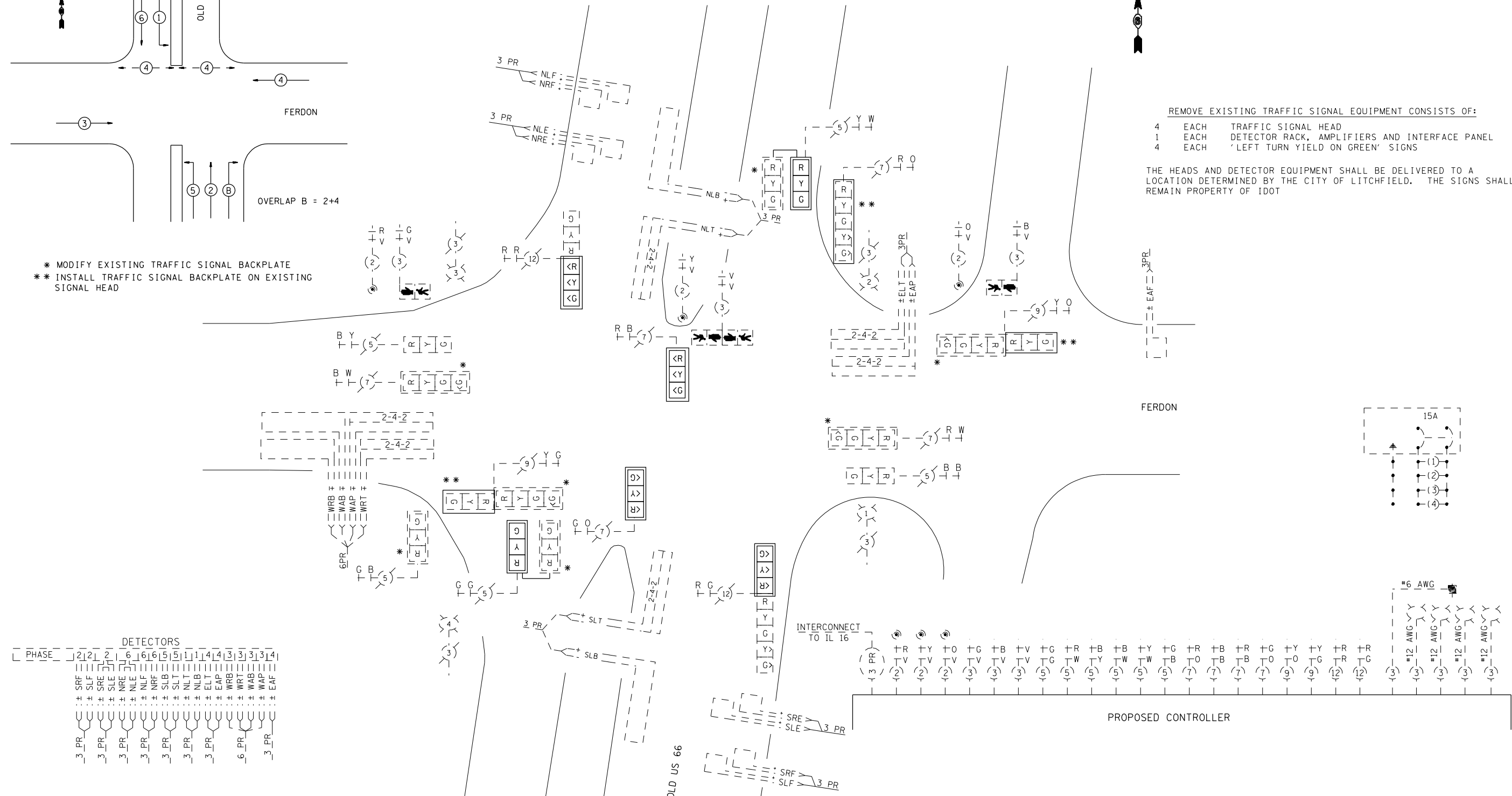


- \* MODIFY EXISTING TRAFFIC SIGNAL BACKPLATE
- \*\* INSTALL TRAFFIC SIGNAL BACKPLATE ON EXISTING SIGNAL HEAD

REMOVE EXISTING TRAFFIC SIGNAL EQUIPMENT CONSISTS OF:

- 4 EACH TRAFFIC SIGNAL HEAD
- 1 EACH DETECTOR RACK, AMPLIFIERS AND INTERFACE PANEL
- 4 EACH 'LEFT TURN YIELD ON GREEN' SIGNS

THE HEADS AND DETECTOR EQUIPMENT SHALL BE DELIVERED TO A LOCATION DETERMINED BY THE CITY OF LITCHFIELD. THE SIGNS SHALL REMAIN PROPERTY OF IDOT



DETECTORS

PHASE	1	2	3	4	5	6	7	8	9	10	11	12	13	14
SRF	SRF	SRE	NRE	NLE	NLF	NRF	NLT	NLB	ELT	EAP	WRT	WAB	WAP	EAF
3_PR	3_PR	3_PR	3_PR	3_PR	3_PR	3_PR	3_PR	3_PR	3_PR	3_PR	6_PR	3_PR	3_PR	3_PR

REVISIONS	
NAME	DATE

ILLINOIS DEPARTMENT OF TRANSPORTATION  
**PROPOSED WIRING DIAGRAM**  
 US 66 & FERDON ST.  
 MONTGOMERY COUNTY  
 SCALE: VERT. NOT TO SCALE  
 DATE: MAY '06  
 DRAWN BY: KDA  
 CHECKED BY: