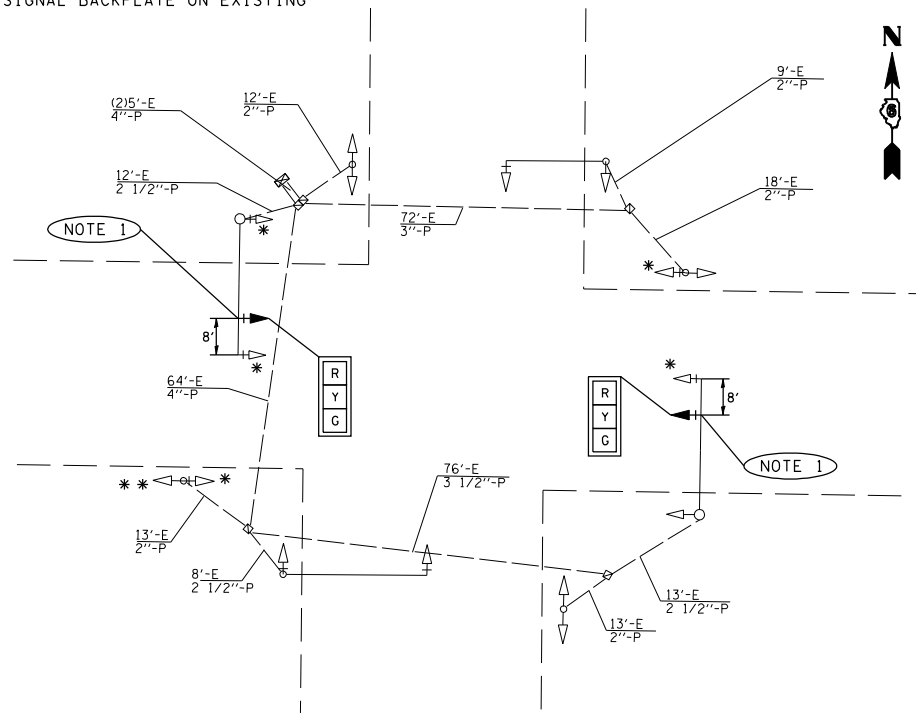


F.A. RTE.	SECTION	COUNTY	TOTAL SHEETS	SHEET NO.
.	.	.	12	8

STA.	TO STA.
FED. ROAD DIST. NO.	ILLINOIS FED. AID PROJECT

VARIOUS
D6 TRAFFIC SIGNAL MOD 2007
SANGAMON/MONTGOMERY

- * MODIFY EXISTING TRAFFIC SIGNAL BACKPLATE
- ** INSTALL TRAFFIC SIGNAL BACKPLATE ON EXISTING SIGNAL HEAD

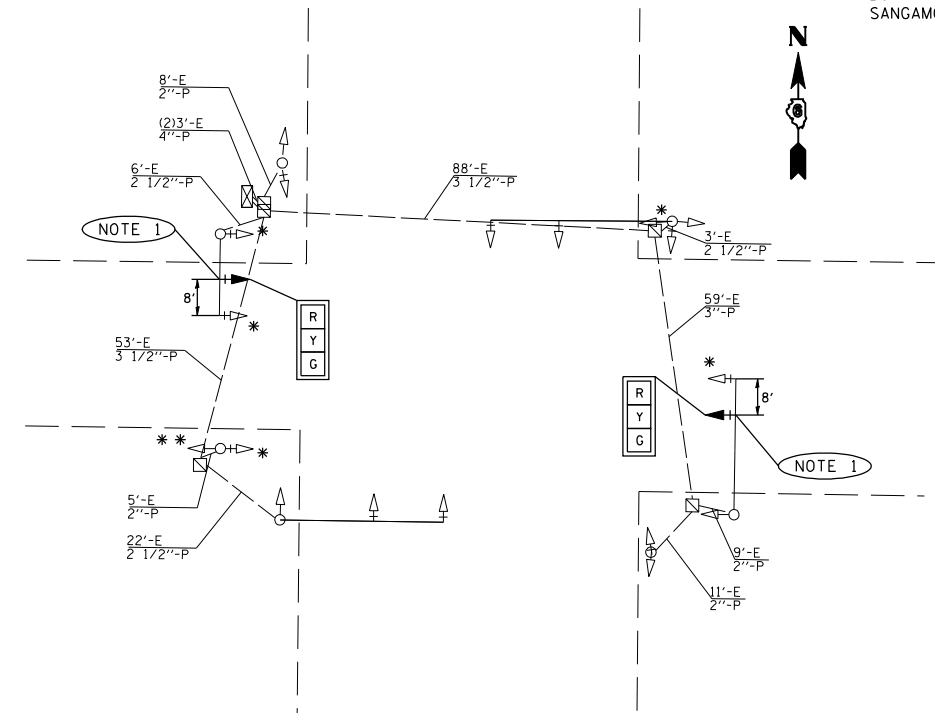


IL 16 & JEFFERSON ST.

TRAFFIC SIGNAL QUANTITIES

LOCATION: IL 16 & STATE ST.

QUANTITY	UNIT	ITEM
32.0	FOOT	ELECTRIC CABLE IN CONDUIT, SIGNAL NO. 14, 7C
3	EACH	TRAFFIC SIGNAL BACKPLATE
870.0	FOOT	ELECTRIC CABLE IN CONDUIT, GROUND, #6 1/C (GREEN)
2	EACH	SIGNAL HEAD, POLYCARBONATE, LED, 1-FACE, 3-SECTION, MAST ARM MOUNTED
5	EACH	MODIFY EXISTING TRAFFIC SIGNAL BACKPLATE



IL 16 & STATE ST.

TRAFFIC SIGNAL QUANTITIES

LOCATION: IL 16 & STATE ST.

QUANTITY	UNIT	ITEM
32.0	FOOT	ELECTRIC CABLE IN CONDUIT, SIGNAL NO. 14, 7C
3	EACH	TRAFFIC SIGNAL BACKPLATE
730.5	FOOT	ELECTRIC CABLE IN CONDUIT, GROUND, #6 1/C (GREEN)
2	EACH	SIGNAL HEAD, POLYCARBONATE, LED, 1-FACE, 3-SECTION, MAST ARM MOUNTED
5	EACH	MODIFY EXISTING TRAFFIC SIGNAL BACKPLATE

NOTE 1: EXISTING WIRING IN MAST ARM SHALL BE TERMINATED AT THE PROPOSED SIGNAL HEAD. A NEW INSTALLATION OF SIGNAL WIRE SHALL BE INSTALLED FROM THE TERMINAL BLOCK OF THE PROPOSED MAST ARM SIGNAL HEAD TO THE TERMINAL BLOCK OF THE EXISTING 5-SECT HEAD. WIRE SHALL BE PAID FOR AS ELECTRIC CABLE IN CONDUIT, SIGNAL NO. 14, 7/C.

NOTE 2: ANY ADJUSTMENTS OF THE EXISTING MAST ARM MOUNTED STREET NAME SIGNS TO ALLOW FOR THE INSTALLATION OF THE PROPOSED SIGNAL HEADS SHALL BE INCLUDED IN THE COST OF THE SIGNAL HEAD.

REVISIONS	
NAME	DATE

ILLINOIS DEPARTMENT OF TRANSPORTATION
PROPOSED TRAFFIC SIGNALS
 IL 16 & JEFFERSON ST. / IL 16 & STATE ST.
 MONTGOMERY COUNTY

SCALE: VERT. NOT TO SCALE
 HORIZ. NOT TO SCALE
 DATE: MAY '06
 DRAWN BY: KDA
 CHECKED BY: