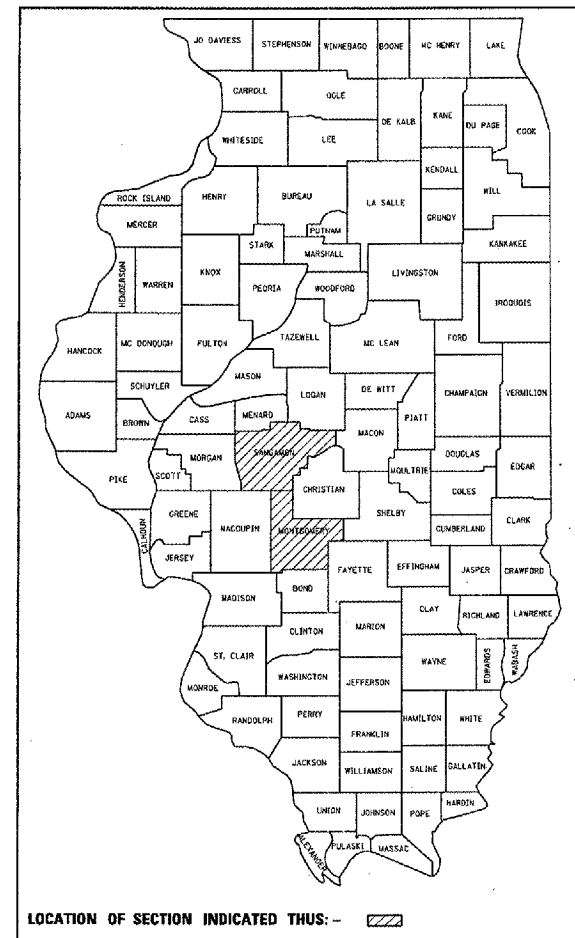


FAP R.T.E.	SECTION	COUNTY	TOTAL SHEETS	SHEET NO.
*	*	*	12	1

\* - VARIOUS  
D6 TRAFFIC SIGNAL MOD 2007  
SANGAMON / MONTGOMERY

D-96-525-06

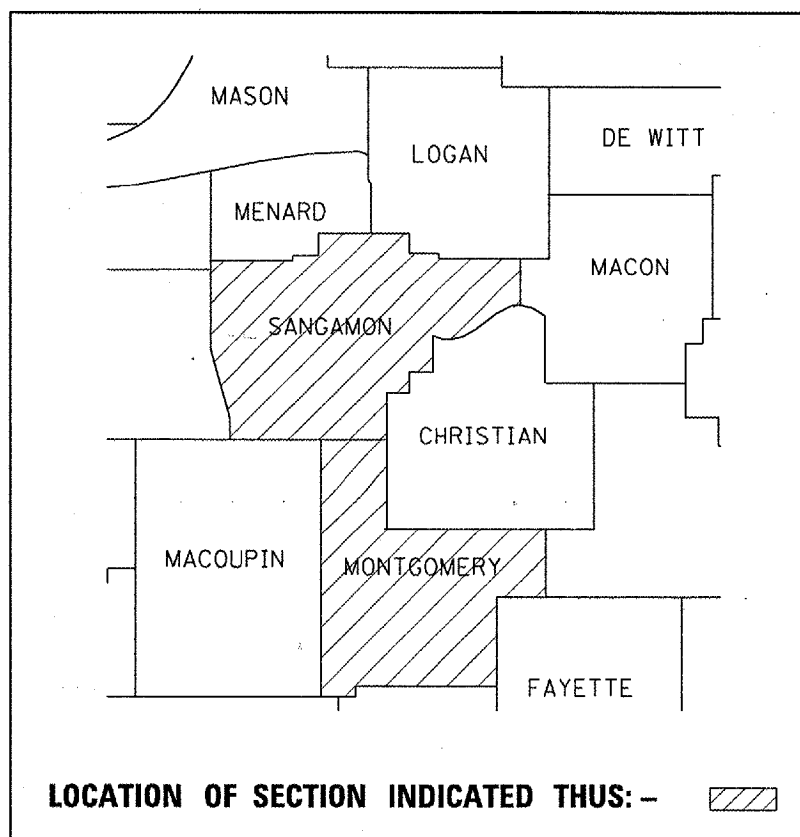


STATE OF ILLINOIS  
DEPARTMENT OF TRANSPORTATION  
DIVISION OF HIGHWAYS

**PROPOSED  
HIGHWAY PLANS**

VARIOUS ROUTES  
SECTION D-6 TRAFFIC SIGNAL MOD 2007  
PROJECT: *HSIP-0005(515)*  
SANGAMON / MONTGOMERY COUNTIES  
C-96-510-07

FOR INDEX OF SHEETS &  
LIST OF STANDARDS, SEE  
SHEET 2



**LOCATION MAP**

STATE OF ILLINOIS  
DEPARTMENT OF TRANSPORTATION  
DIVISION OF HIGHWAYS

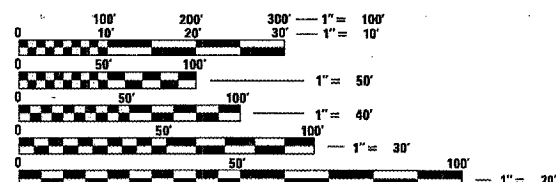
SUBMITTED *May 25, 2006*  
*Chris M. Reed*  
DEPUTY DIRECTOR OF HIGHWAYS, REGION ENGINEER

*June 30, 2006*  
*Mike Hene*  
ENGINEER OF DESIGN AND ENVIRONMENT

*June 30, 2006*  
*Milton R. Sees, P.E.*  
DIRECTOR OF HIGHWAYS, CHIEF ENGINEER

**PRINTED BY THE AUTHORITY  
OF THE STATE OF ILLINOIS**

PROJECT ENGINEER: SAL MADONIA (217) 782-4761  
SQUAD LEADER: MARCUS BRUCE (217) 524-0946



FULL SIZE PLANS HAVE BEEN PREPARED USING STANDARD  
ENGINEERING SCALES. REDUCED SIZED PLANS WILL NOT  
CONFORM TO STANDARD SCALES. IN MAKING MEASUREMENTS  
ON REDUCED PLANS, THE ABOVE SCALES MAY BE USED.

J.U.L.I.E.  
JOINT UTILITY LOCATION INFORMATION FOR EXCAVATION  
1-800-892-0123

FA RTE.	SECTION	COUNTY	TOTAL SHEETS	SHEET NO.
*	*	*	12	2
STA. _____		TO STA. _____		
FED. ROAD DIST. NO. _____		ILLINOIS FED. AID PROJECT _____		
** VARIOUS D6 TRAFFIC SIGNAL MOD 2007 SANGAMON / MONTGOMERY				

INDEX OF SHEETS

COVERSHEET	1
GENERAL NOTES, INDEX OF SHEETS, AND SIGNATURE BLOCK	2
SUMMARY OF QUANTITIES	3
TRAFFIC SIGNAL DETAILS	
ROCHESTER - IL 29 AND MAIN STREET	4
LITCHFIELD - OLD US 66 AND FERDON STREET	6
LITCHFIELD - IL 16 AT JEFFERSON AND STATE STREETS	8
HILLSBORO - IL 127 AT IL 16	9
SIGN DETAILS - ROCHESTER AND HILLSBORO	11
LEGEND FOR TRAFFIC SIGNAL DETAILS	12

GENERAL NOTES

THE CONTRACTOR SHALL BE RESPONSIBLE FOR PROTECTING UTILITY PROPERTY FROM CONSTRUCTION OPERATIONS AS OUTLINED IN ARTICLE 107.31 OF THE STANDARD SPECIFICATIONS

ANY DAMAGE TO THE UNDERGROUND FACILITIES CAUSED BY THE CONTRACTOR SHALL BE REPAIRED TO THE SATISFACTION OF THE DEPARTMENT AT THE CONTRACTOR'S EXPENSE, INCLUDING TEMPORARY REPAIRS WHICH MAY BE REQUIRED TO KEEP THE FACILITY OPERATIONAL WHILE MATERIAL IS BEING OBTAINED TO MAKE PERMANENT REPAIRS.

ANY REFERENCE WITHIN THESE PLANS TO A STANDARD SHALL BE INTERPRETED TO MEAN THE EDITION INDICATED BY THE SUB-NUMBER LISTED ON THE LIST OF STANDARDS OR THE COPY INCLUDED IN THESE PLANS

LIST OF STANDARDS

000001-04	Standard Symbols, Abbreviations, and Patterns
701701-04	Urban Lane Closure Multilane Intersections
702001-06	Traffic Control Devices
720016-01	Mast Arm Mounted Street Name Signs
857001	Standard Phase Designation Diagrams and Phase Sequences
877001-02	Steel Mast Arm Assembly and Pole
878001-04	Concrete Foundation Details
880006	Traffic Signal Mounting Details

DISTRICT SIX		
EXAMINED	<u>May 22</u>	20 <u>06</u>
<i>[Signature]</i>		
OPERATIONS ENGINEER		
EXAMINED	<u>MAY 22</u>	20 <u>06</u>
<i>[Signature]</i>		
PROGRAM IMPLEMENTATION ENGINEER		
EXAMINED	<u>May 25</u>	20 <u>06</u>
<i>[Signature]</i>		
PROGRAM DEVELOPMENT ENGINEER		

ILLINOIS DEPARTMENT OF TRANSPORTATION  
 GENERAL NOTES  
 VARIOUS ROUTES  
 SECTION D-6 TRAFFIC SIGNAL MOD 2007  
 MONTGOMERY / SANGAMON COUNTIES

FA RTE.	SECTION	COUNTY	TOTAL SHEETS	SHEET NO.
*	*	*	12	3

STA. \_\_\_\_\_ TO STA. \_\_\_\_\_  
 FED. ROAD DIST. NO. - [ILLINOIS] FED. AID PROJECT

\* - VARIOUS  
 D6 TRAFFIC SIGNAL MOD 2007  
 SANGAMON / MONTGOMERY

SUMMARY OF QUANTITIES				Y031-1F		
				SANGAMON CO. RURAL	MONTGOMERY CO. URBAN	MONTGOMERY CO. RURAL
				90% FED 5% STATE 5% LOCAL ROCHESTER	90% FED 5% STATE 5% LOCAL LITCHFIELD	90% FED 10% STATE HILLSBORO
PAY CODE	PAY ITEM	UNIT	TOTAL QUANTITY	QUANTITY *	QUANTITY *	QUANTITY **
X0325469	MODIFY EXISTING TRAFFIC SIGNAL BACKPLATE	EACH	29	6	17	6
X0323153	ELECTRIC CABLE IN CONDUIT, GROUND, #6 1C (GREEN)	FOOT	5354	1336	3085	933
X8801300	SIGNAL HEAD, POLYCARBONATE, LED, 1-FACE, 3-SECTION, BRACKET MOUNTED	EACH	4		4	
X8801310	SIGNAL HEAD, POLYCARBONATE, LED, 1-FACE, 3-SECTION, MAST ARM MOUNTED	EACH	7		6	1
X8801350	SIGNAL HEAD, POLYCARBONATE, LED, 1-FACE, 4-SECTION, MAST ARM MOUNTED	EACH	2	2		
67100100	MOBILIZATION	L SUM	1	0.25	0.5	0.25
70102635	TRAFFIC CONTROL AND PROTECTION, STANDARD 701701	L SUM	1	0.25	0.5	0.25
72000100	SIGN PANEL - TYPE I	SO FT	8			8
72000200	SIGN PANEL - TYPE II	SO FT	22.5	22.5		
81012600	CONDUIT IN TRENCH, 2" DIA., PVC	FOOT	41	38		3
81021550	CONDUIT, AUGERED 2" DIA., PVC	FOOT	40	29		11
81500200	TRENCH AND BACKFILL FOR ELECTRICAL WORK	FOOT	41	38		3
85000200	MAINTENANCE OF EXISTING TRAFFIC SIGNAL INSTALLATION	EACH	2	1		1
85700200	FULL-ACTUATED CONTROLLER AND TYPE IV CABINET	EACH	1		1	
85900100	TRANSCEIVER	EACH	1		1	
87301245	ELECTRIC CABLE IN CONDUIT, SIGNAL NO. 14 5C	FOOT	669.5	393	28	248.5
87301255	ELECTRIC CABLE IN CONDUIT, SIGNAL NO. 14 7C	FOOT	64		64	
87700120	STEEL MAST ARM ASSEMBLY AND POLE, 16 FT	EACH	1			1
87700130	STEEL MAST ARM ASSEMBLY AND POLE, 18 FT	EACH	2	2		
87800400	CONCRETE FOUNDATION, TYPE E, 30 INCH DIAMETER	FOOT	30	20		10
87900200	DRILL EXISTING HANDHOLE	EACH	3	2		1
88200100	TRAFFIC SIGNAL BACKPLATE	EACH	26	8	15	3
88500100	INDUCTIVE LOOP DETECTOR	EACH	18		18	
89502375	REMOVE EXISTING TRAFFIC SIGNAL EQUIPMENT	EACH	1		1	

- \* INTERSECTION OF IL 29 AND MAIN STREET (ROCHESTER)  
 INTERSECTION OF OLD US 66 AND FERDON STREET (LITCHFIELD)  
 INTERSECTION OF IL 16 & JEFFERSON AND STATE STREETS (LITCHFIELD)
- \*\* INTERSECTION IL 127 AND IL 16 (HILLSBORO)

ILLINOIS DEPARTMENT OF TRANSPORTATION  
 SUMMARY OF QUANTITIES  
 VARIOUS ROUTES  
 SECTION D-6 TRAFFIC SIGNAL MOD 2007  
 MONTGOMERY / SANGAMON COUNTIES

PLOT DATE : 6/6/2006  
 FILE NAME : c:\p\proj\m\14525265\shs000.dgn  
 USER : jkatz / rl  
 USER NAME : jkatz

F.A. RTE.	SECTION	COUNTY	TOTAL SHEETS	SHEET NO.
.	.	.	12	4

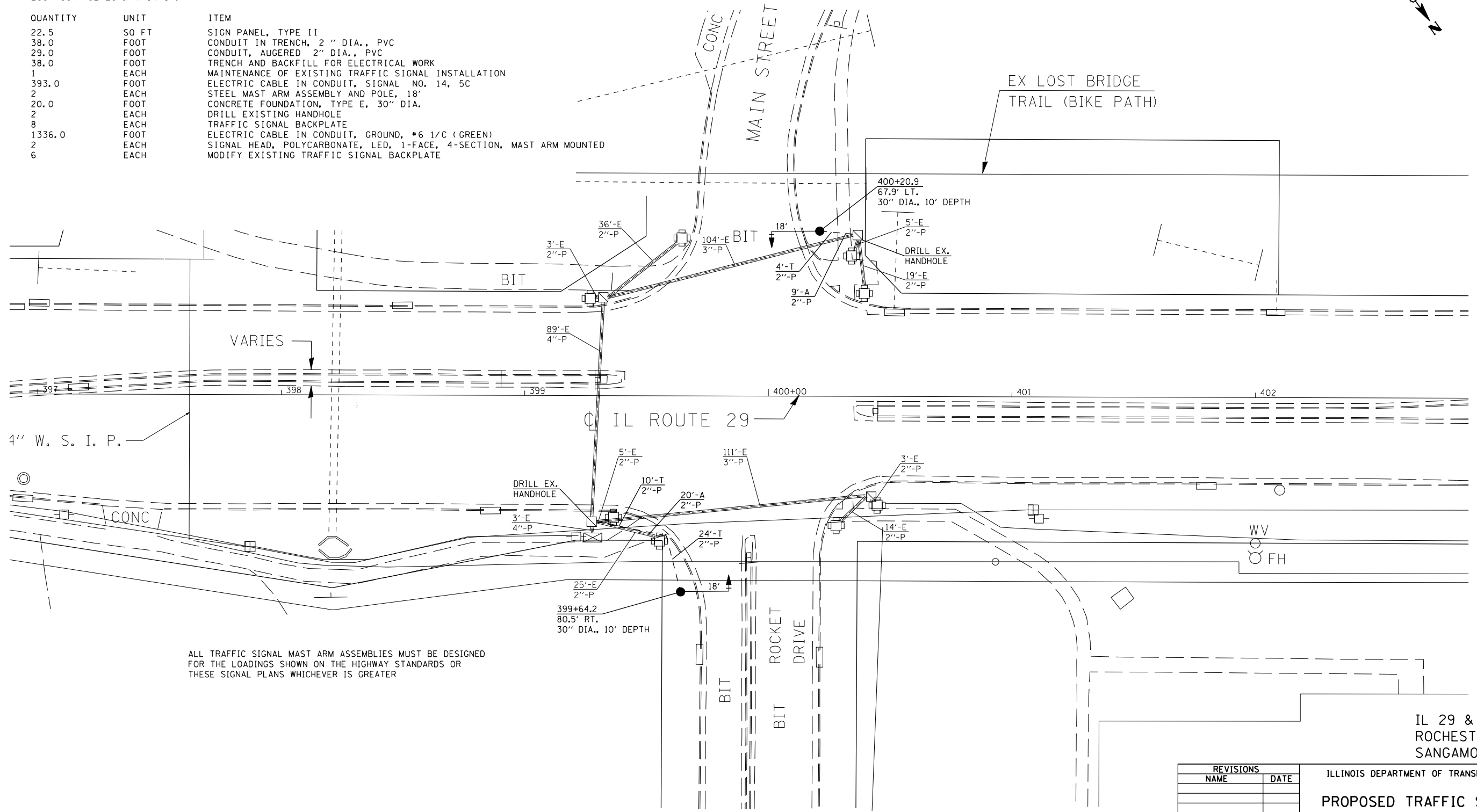
STA.	TO STA.
FED. ROAD DIST. NO.	ILLINOIS FED. AID PROJECT

VARIOUS  
D6 TRAFFIC SIGNAL MOD 2007  
SANGAMON/MONTGOMERY



TRAFFIC SIGNAL QUANTITIES  
LOCATION: IL 29 & MAIN ST.

QUANTITY	UNIT	ITEM
22.5	SQ FT	SIGN PANEL, TYPE II
38.0	FOOT	CONDUIT IN TRENCH, 2" DIA., PVC
29.0	FOOT	CONDUIT, AUGERED 2" DIA., PVC
38.0	FOOT	TRENCH AND BACKFILL FOR ELECTRICAL WORK
1	EACH	MAINTENANCE OF EXISTING TRAFFIC SIGNAL INSTALLATION
393.0	FOOT	ELECTRIC CABLE IN CONDUIT, SIGNAL NO. 14, 5C
2	EACH	STEEL MAST ARM ASSEMBLY AND POLE, 18'
20.0	FOOT	CONCRETE FOUNDATION, TYPE E, 30" DIA.
2	EACH	DRILL EXISTING HANDHOLE
8	EACH	TRAFFIC SIGNAL BACKPLATE
1336.0	FOOT	ELECTRIC CABLE IN CONDUIT, GROUND, #6 1/C (GREEN)
2	EACH	SIGNAL HEAD, POLYCARBONATE, LED, 1-FACE, 4-SECTION, MAST ARM MOUNTED
6	EACH	MODIFY EXISTING TRAFFIC SIGNAL BACKPLATE



ALL TRAFFIC SIGNAL MAST ARM ASSEMBLIES MUST BE DESIGNED FOR THE LOADINGS SHOWN ON THE HIGHWAY STANDARDS OR THESE SIGNAL PLANS WHICHEVER IS GREATER

IL 29 & MAIN ST.  
ROCHESTER  
SANGAMON COUNTY

REVISIONS	
NAME	DATE

ILLINOIS DEPARTMENT OF TRANSPORTATION  
**PROPOSED TRAFFIC SIGNALS**  
VARIOUS ROUTES  
SECTION D-6 TRAFFIC SIGNAL MOD 2007  
MONTGOMERY / SANGAMON COUNTIES  
SCALE: VERT. 1" = 20'  
          HORIZ. 1" = 40'  
DATE: MAY '06  
DRAWN BY: KDA  
CHECKED BY: \_\_\_\_\_

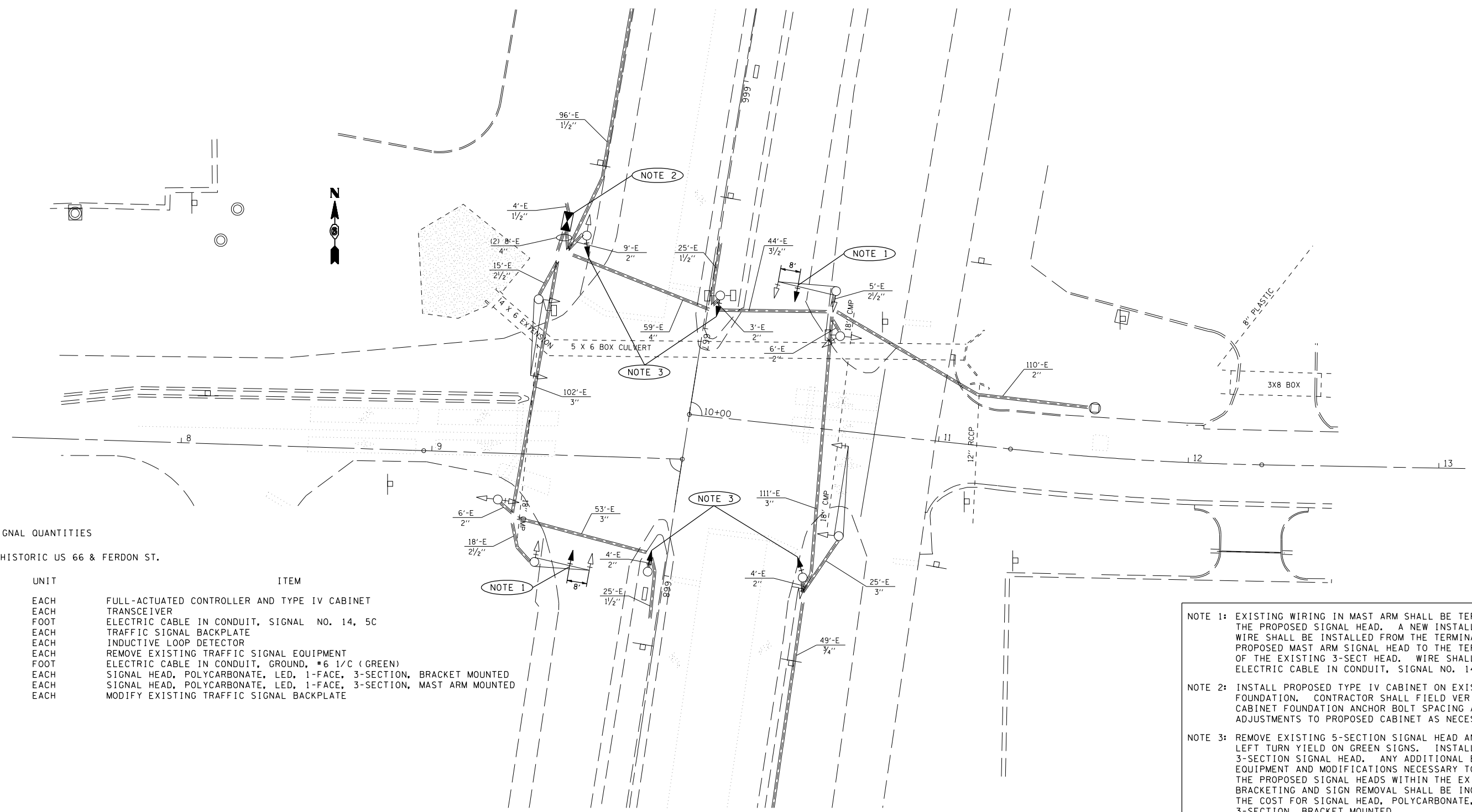
PLOT DATE = 5/25/2006  
FILE NAME = c:\projects\652506\rochester\ts\sheet.dgn  
PLOT SCALE = 42.3525 / IN.  
USER NAME = brenhamme



F.A. RTE.	SECTION	COUNTY	TOTAL SHEETS	SHEET NO.
.	.	.	12	6

STA.	TO STA.
FED. ROAD DIST. NO.	ILLINOIS FED. AID PROJECT

- VARIOUS
- D6 TRAFFIC SIGNAL MOD 2007
- SANGAMON/MONTGOMERY



TRAFFIC SIGNAL QUANTITIES

LOCATION: HISTORIC US 66 & FERDON ST.

QUANTITY	UNIT	ITEM
1	EACH	FULL-ACTUATED CONTROLLER AND TYPE IV CABINET
1	EACH	TRANSCEIVER
28.0	FOOT	ELECTRIC CABLE IN CONDUIT, SIGNAL NO. 14, 5C
9	EACH	TRAFFIC SIGNAL BACKPLATE
18	EACH	INDUCTIVE LOOP DETECTOR
1	EACH	REMOVE EXISTING TRAFFIC SIGNAL EQUIPMENT
1484.5	FOOT	ELECTRIC CABLE IN CONDUIT, GROUND, #6 1/C (GREEN)
4	EACH	SIGNAL HEAD, POLYCARBONATE, LED, 1-FACE, 3-SECTION, BRACKET MOUNTED
2	EACH	SIGNAL HEAD, POLYCARBONATE, LED, 1-FACE, 3-SECTION, MAST ARM MOUNTED
7	EACH	MODIFY EXISTING TRAFFIC SIGNAL BACKPLATE

- NOTE 1: EXISTING WIRING IN MAST ARM SHALL BE TERMINATED AT THE PROPOSED SIGNAL HEAD. A NEW INSTALLATION OF SIGNAL WIRE SHALL BE INSTALLED FROM THE TERMINAL BLOCK OF THE PROPOSED MAST ARM SIGNAL HEAD TO THE TERMINAL BLOCK OF THE EXISTING 3-SECT HEAD. WIRE SHALL BE PAID FOR AS ELECTRIC CABLE IN CONDUIT, SIGNAL NO. 14, 5/C.
- NOTE 2: INSTALL PROPOSED TYPE IV CABINET ON EXISTING FOUNDATION. CONTRACTOR SHALL FIELD VERIFY EXISTING CABINET FOUNDATION ANCHOR BOLT SPACING AND MAKE ADJUSTMENTS TO PROPOSED CABINET AS NECESSARY.
- NOTE 3: REMOVE EXISTING 5-SECTION SIGNAL HEAD AND ANY LEFT TURN YIELD ON GREEN SIGNS. INSTALL PROPOSED 3-SECTION SIGNAL HEAD. ANY ADDITIONAL BRACKETING EQUIPMENT AND MODIFICATIONS NECESSARY TO INSTALL THE PROPOSED SIGNAL HEADS WITHIN THE EXISTING BRACKETING AND SIGN REMOVAL SHALL BE INCLUDED IN THE COST FOR SIGNAL HEAD, POLYCARBONATE, LED 1-FACE, 3-SECTION, BRACKET MOUNTED.

REVISIONS	
NAME	DATE

ILLINOIS DEPARTMENT OF TRANSPORTATION

**PROPOSED TRAFFIC SIGNALS**

US 66 & FERDON ST.  
MONTGOMERY COUNTY

SCALE: VERT. 1" = 20'  
HORIZ. 1" = 20'  
DATE: MAY '06

DRAWN BY: KDA  
CHECKED BY:

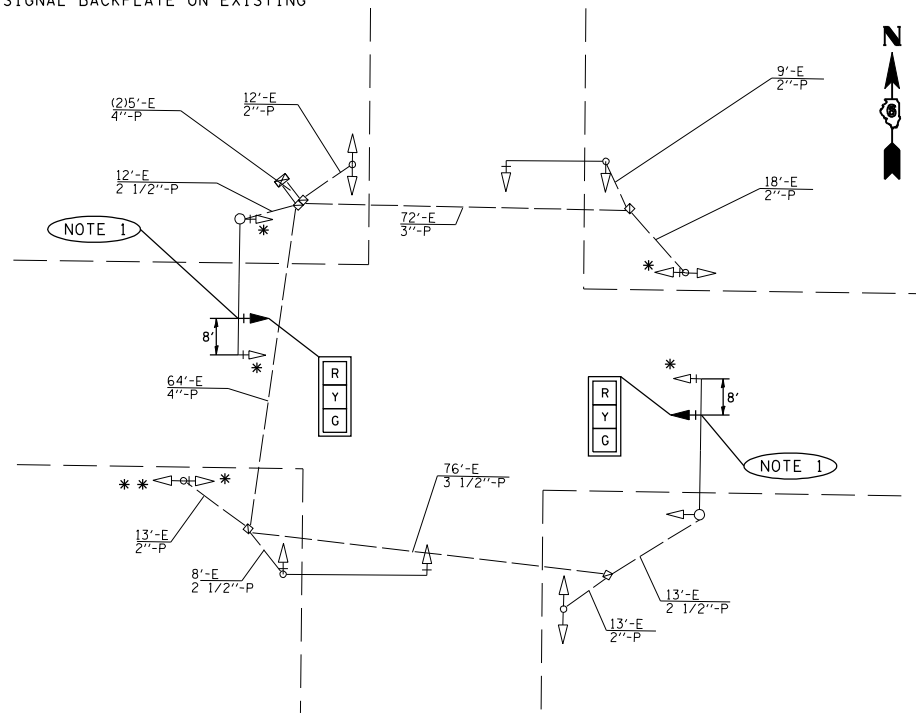


F.A. RTE.	SECTION	COUNTY	TOTAL SHEETS	SHEET NO.
.	.	.	12	8

STA.	TO STA.
FED. ROAD DIST. NO.	ILLINOIS FED. AID PROJECT

VARIOUS  
D6 TRAFFIC SIGNAL MOD 2007  
SANGAMON/MONTGOMERY

- \* MODIFY EXISTING TRAFFIC SIGNAL BACKPLATE
- \*\* INSTALL TRAFFIC SIGNAL BACKPLATE ON EXISTING SIGNAL HEAD

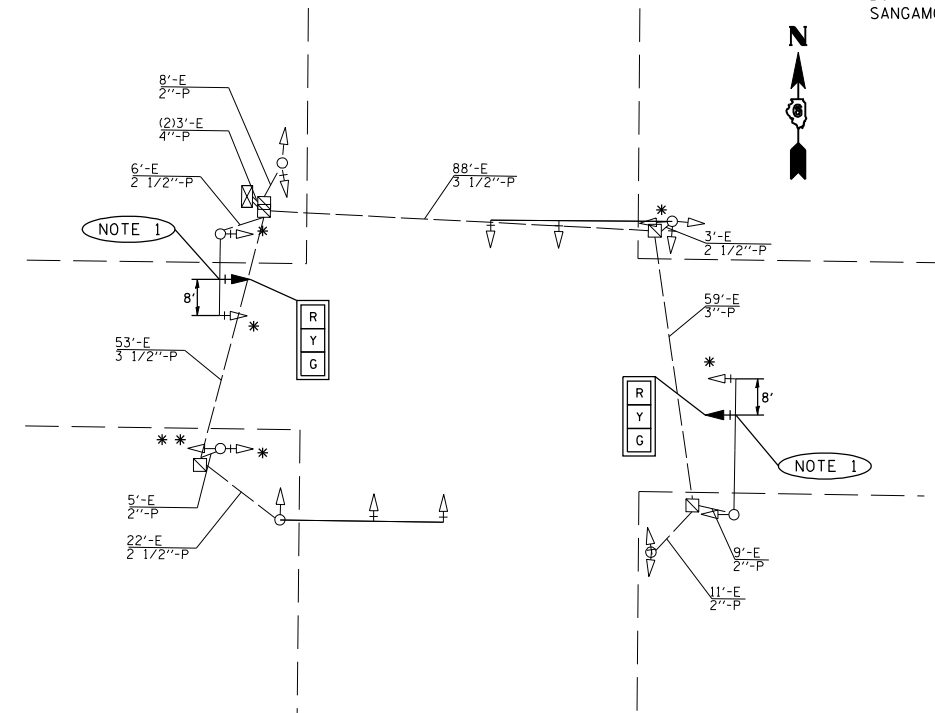


## IL 16 & JEFFERSON ST.

### TRAFFIC SIGNAL QUANTITIES

LOCATION: IL 16 & STATE ST.

QUANTITY	UNIT	ITEM
32.0	FOOT	ELECTRIC CABLE IN CONDUIT, SIGNAL NO. 14, 7C
3	EACH	TRAFFIC SIGNAL BACKPLATE
870.0	FOOT	ELECTRIC CABLE IN CONDUIT, GROUND, #6 1/C (GREEN)
2	EACH	SIGNAL HEAD, POLYCARBONATE, LED, 1-FACE, 3-SECTION, MAST ARM MOUNTED
5	EACH	MODIFY EXISTING TRAFFIC SIGNAL BACKPLATE



## IL 16 & STATE ST.

### TRAFFIC SIGNAL QUANTITIES

LOCATION: IL 16 & STATE ST.

QUANTITY	UNIT	ITEM
32.0	FOOT	ELECTRIC CABLE IN CONDUIT, SIGNAL NO. 14, 7C
3	EACH	TRAFFIC SIGNAL BACKPLATE
730.5	FOOT	ELECTRIC CABLE IN CONDUIT, GROUND, #6 1/C (GREEN)
2	EACH	SIGNAL HEAD, POLYCARBONATE, LED, 1-FACE, 3-SECTION, MAST ARM MOUNTED
5	EACH	MODIFY EXISTING TRAFFIC SIGNAL BACKPLATE

NOTE 1: EXISTING WIRING IN MAST ARM SHALL BE TERMINATED AT THE PROPOSED SIGNAL HEAD. A NEW INSTALLATION OF SIGNAL WIRE SHALL BE INSTALLED FROM THE TERMINAL BLOCK OF THE PROPOSED MAST ARM SIGNAL HEAD TO THE TERMINAL BLOCK OF THE EXISTING 5-SECT HEAD. WIRE SHALL BE PAID FOR AS ELECTRIC CABLE IN CONDUIT, SIGNAL NO. 14, 7/C.

NOTE 2: ANY ADJUSTMENTS OF THE EXISTING MAST ARM MOUNTED STREET NAME SIGNS TO ALLOW FOR THE INSTALLATION OF THE PROPOSED SIGNAL HEADS SHALL BE INCLUDED IN THE COST OF THE SIGNAL HEAD.

REVISIONS	
NAME	DATE

ILLINOIS DEPARTMENT OF TRANSPORTATION  
**PROPOSED TRAFFIC SIGNALS**  
 IL 16 & JEFFERSON ST. / IL 16 & STATE ST.  
 MONTGOMERY COUNTY

SCALE: VERT. NOT TO SCALE  
 HORIZ. DATE MAY '06  
 DRAWN BY KDA  
 CHECKED BY



F.A. RTE.	SECTION	COUNTY	TOTAL SHEETS	SHEET NO.
.	.	.	12	9

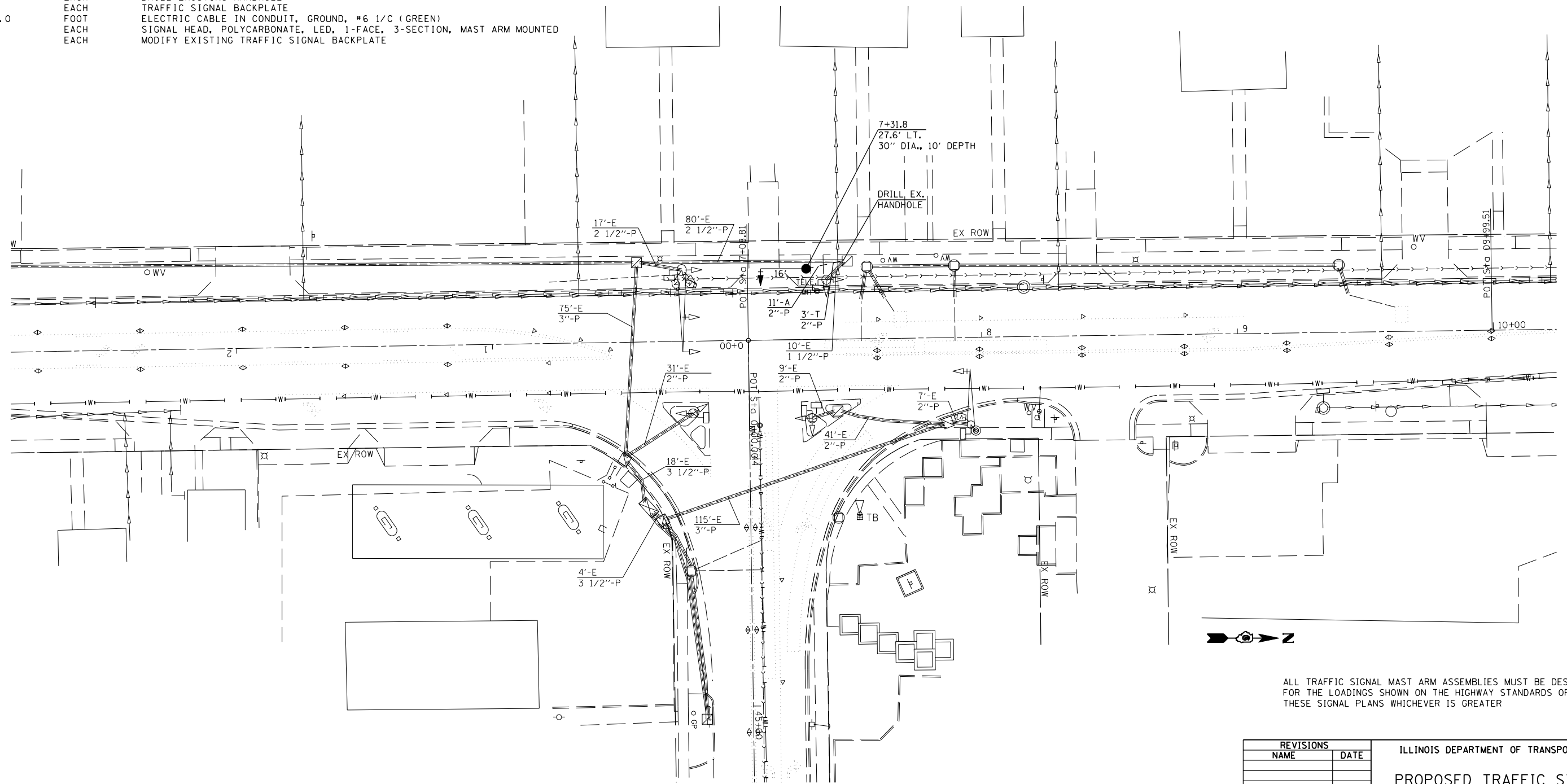
STA. \_\_\_\_\_ TO STA. \_\_\_\_\_  
 FED. ROAD DIST. NO. \_\_\_\_\_ ILLINOIS FED. AID PROJECT

- VARIOUS
- D6 TRAFFIC SIGNAL MOD 2007
- SANGAMON/MONTGOMERY

TRAFFIC SIGNAL QUANTITIES

LOCATION: IL 16 & IL 127

QUANTITY	UNIT	ITEM
8.0	SQ FT	SIGN PANEL, TYPE 1
3.0	FOOT	CONDUIT IN TRENCH, 2" DIA., PVC
11.0	FOOT	CONDUIT, AUGERED 2" DIA., PVC
3.0	FOOT	TRENCH AND BACKFILL FOR ELECTRICAL WORK
1	EACH	MAINTENANCE OF EXISTING TRAFFIC SIGNAL INSTALLATION
248.5	FOOT	ELECTRIC CABLE IN CONDUIT, SIGNAL NO. 14, 5C
1	EACH	STEEL MAST ARM ASSEMBLY AND POLE, 16'
10.0	FOOT	CONCRETE FOUNDATION, TYPE E, 30" DIA.
1	EACH	DRILL EXISTING HANDHOLE
3	EACH	TRAFFIC SIGNAL BACKPLATE
933.0	FOOT	ELECTRIC CABLE IN CONDUIT, GROUND, #6 1/C (GREEN)
1	EACH	SIGNAL HEAD, POLYCARBONATE, LED, 1-FACE, 3-SECTION, MAST ARM MOUNTED
6	EACH	MODIFY EXISTING TRAFFIC SIGNAL BACKPLATE



ALL TRAFFIC SIGNAL MAST ARM ASSEMBLIES MUST BE DESIGNED FOR THE LOADINGS SHOWN ON THE HIGHWAY STANDARDS OR THESE SIGNAL PLANS WHICHEVER IS GREATER

REVISIONS	
NAME	DATE

ILLINOIS DEPARTMENT OF TRANSPORTATION  
**PROPOSED TRAFFIC SIGNALS**  
 MAIN ST. (IL 127) & SCHOOL ST. (IL 16)  
 MONTGOMERY COUNTY

SCALE: VERT. 1" = 20'  
 HORIZ. 1" = 40'  
 DATE: MAY '06  
 DRAWN BY: KDA  
 CHECKED BY:

PLOT DATE = 5/25/2006  
 FILE NAME = c:\projects\652506\h11\aboro\ts\_sheets.dgn  
 PLOT SCALE = 42.3525 / IN.  
 USER NAME = brenhamme





F.A. RTE.	SECTION	COUNTY	TOTAL SHEETS	SHEET NO.
			12	12
STA. _____		TO STA. _____		
FED. ROAD DIST. NO. _____		ILLINOIS FED. AID PROJECT		

VARIOUS  
D6 TRAFFIC SIGNAL MOD 2007  
SANGAMON/MONTGOMERY

**TRAFFIC SIGNAL PLAN LEGEND**

EXISTING	PROPOSED	DESCRIPTION
		SIGNAL HEAD
		SIGNAL HEAD WITH BACKPLATE
		TEMPORARY SIGNAL HEAD
		PEDESTRIAN SIGNAL HEAD
		PEDESTRIAN PUSHBUTTON DETECTOR
		DETECTOR LOOP
		QUADRAPOLE DETECTOR LOOP
		SIGNAL POST
		ALUMINUM MAST ARM ASSEMBLY AND POLE
		STEEL MAST ARM ASSEMBLY AND POLE
		WOOD POLE
		WOOD POLE WITH GUY
		SERVICE INSTALLATION
		CONTROLLER
		HANDHOLE
		HEAVY DUTY HANDHOLE
		DOUBLE HANDHOLE
		JUNCTION BOX
		GULFBBOX JUNCTION
		AERIAL CABLE
		CONDUIT
		CONDUIT SPLICE
		SPAN WIRE / TETHER WIRE
		SIDEWALK REMOVAL IN SO M (SO FT)
		PC CONC SDWLK 100 mm IN SO M (SO YD)
		PC CONC SDWLK 100 mm SPECIAL IN SO M (SO YD)

**TRAFFIC SIGNAL WIRING DIAGRAM LEGEND**

EXISTING	PROPOSED	DESCRIPTION
		200 mm (8") SIGNAL SECTION
		300 mm (12") SIGNAL SECTION
		DIRECTIONAL SIGNAL SECTION
		225 mm ( 9") PEDESTRIAN SIGNAL FACE
		300 mm (12") PEDESTRIAN SIGNAL FACE
		SIGNAL FACE WITH BACKPLATE
		PROGRAMMED SIGNAL SECTION
		SIGNAL SECTION WITH LOUVRE
		DUAL-INDICATION SIGNAL SECTION
		INDUCTION DETECTOR LOOP
		QUADRAPOLE DETECTOR LOOP
		DIRECT-CONNECTED LOOP LEAD-IN ( TWISTED )
		ELECTRIC CABLE DENOTING NUMBER OF CONDUCTORS
		ELECTRIC CABLE TO BE REMOVED
		ELECTRIC CABLE IDENTIFIER TAPE CODES (R= RED W= WHITE Y= YELLOW G= GREEN B= BLUE O= ORANGE)
		PEDESTRIAN PUSHBUTTON DETECTOR
		VIDEO DETECTION CAMERA
		EMERGENCY VEHICLE PREEMPTOR



REVISIONS	
NAME	DATE

ILLINOIS DEPARTMENT OF TRANSPORTATION  
**LEGEND FOR TRAFFIC SIGNAL DETAILS**  
VARIOUS ROUTES  
SECTION D-6 TRAFFIC SIGNAL MOD 2007  
MONTGOMERY / SANGAMON COUNTIES

SCALE: VERT. \_\_\_\_\_  
HORIZ. \_\_\_\_\_  
DATE: DECEMBER 3, 1999

DRAWN BY \_\_\_\_\_  
CHECKED BY WCD

PLOT DATE = 5/25/2006  
FILE NAME = c:\projects\652506\shdetat1.dgn  
PLOT SCALE = 4.23525 / IN.  
USER NAME = brenhamme