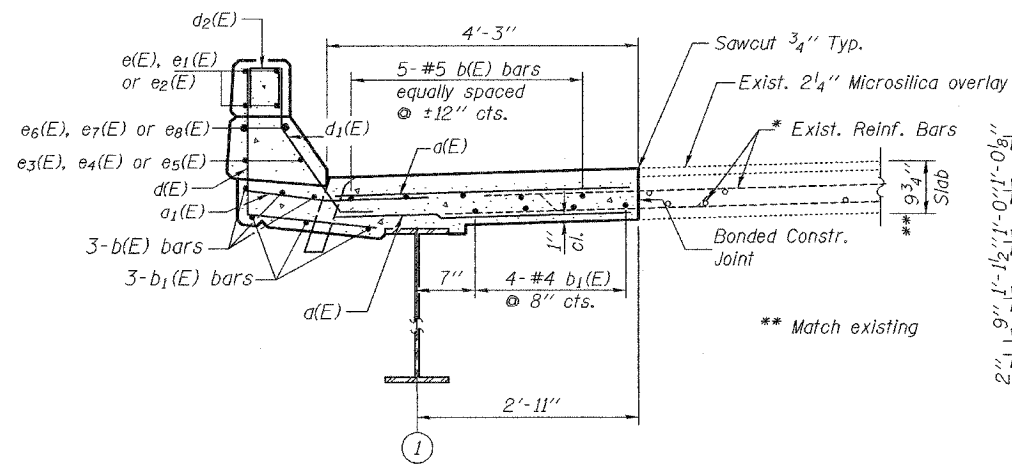


STATE OF ILLINOIS
DEPARTMENT OF TRANSPORTATION

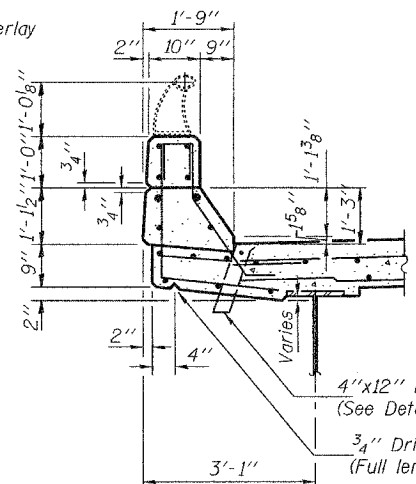
ROUTE NO.	SECTION	COUNTY	DATE	SHEET	SHEET NO. 3 6 SHEETS
FAI 64		WAYNE	11	5	
FED. ROAD DIST. NO. 7	ILLINOIS	FED. AID PROJECT-			



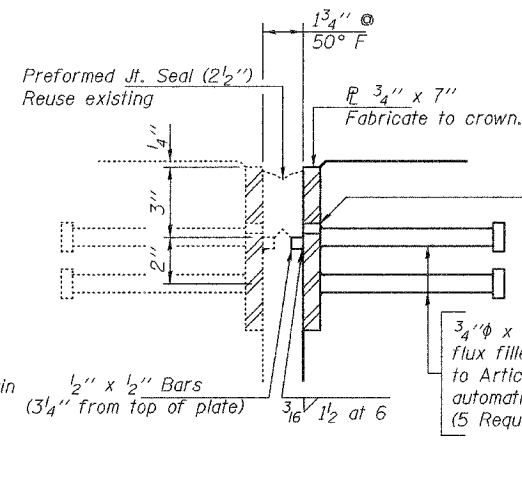
SECTION A-A

(See Curb Detail for dimensions.)

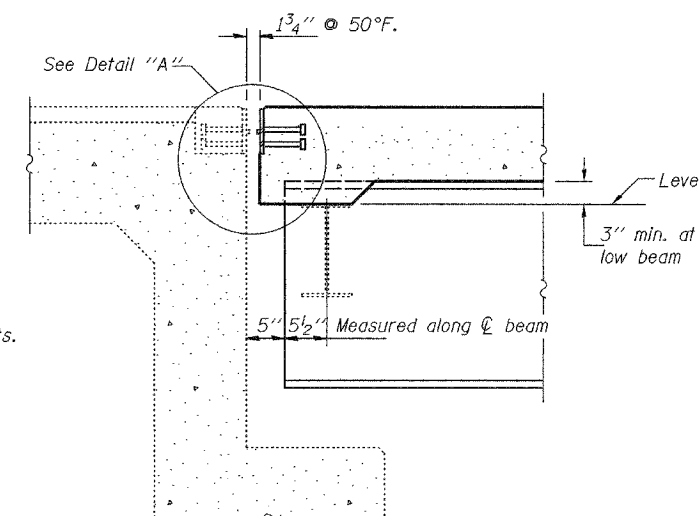
* Existing reinforcement extending into the removal area shall be cleaned, straightened and incorporated into the new construction. Any reinforcement bars that are damaged during concrete removal shall be replaced with an approved bar splicer or anchorage system. Cost shall be included with Concrete Removal.



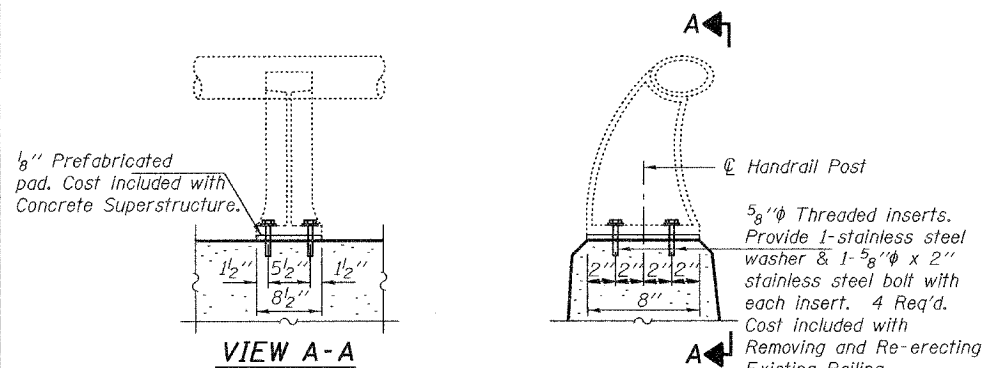
CURB DETAIL



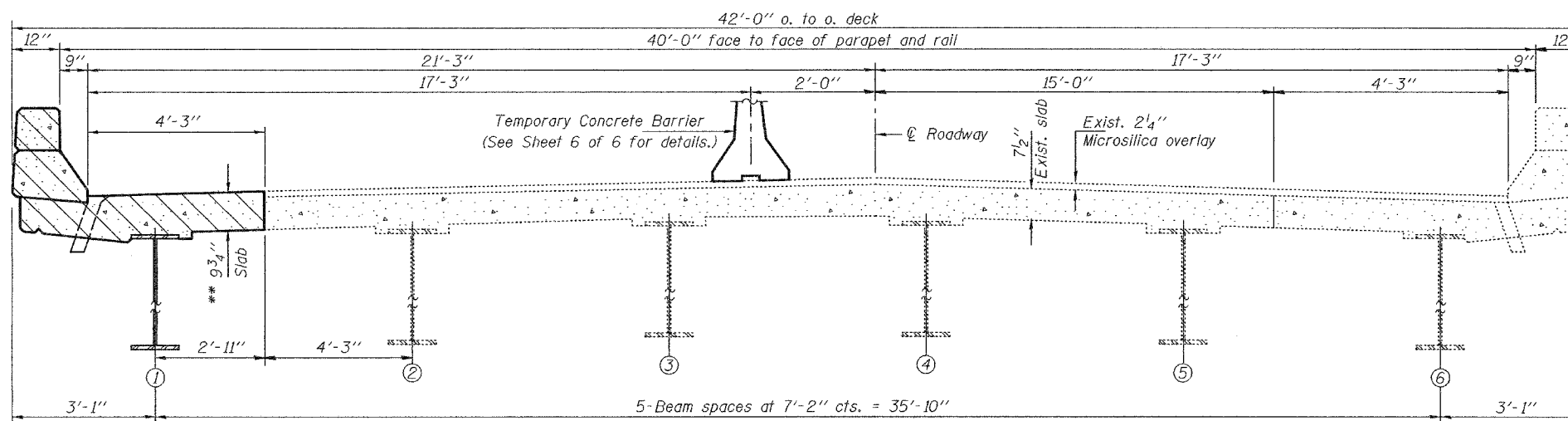
DETAIL A



SECTION B-B



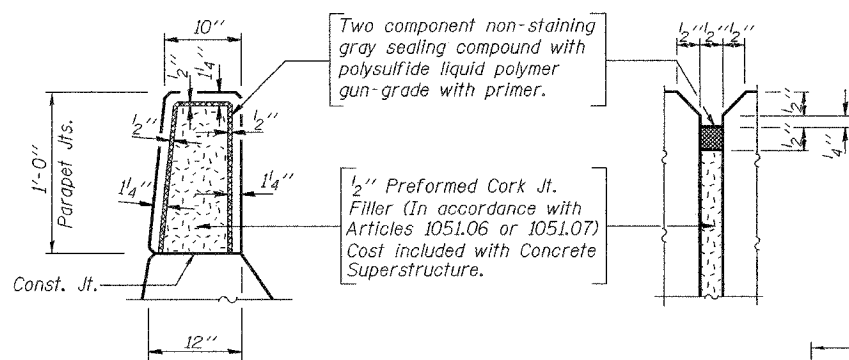
HANDRAIL POST DETAILS



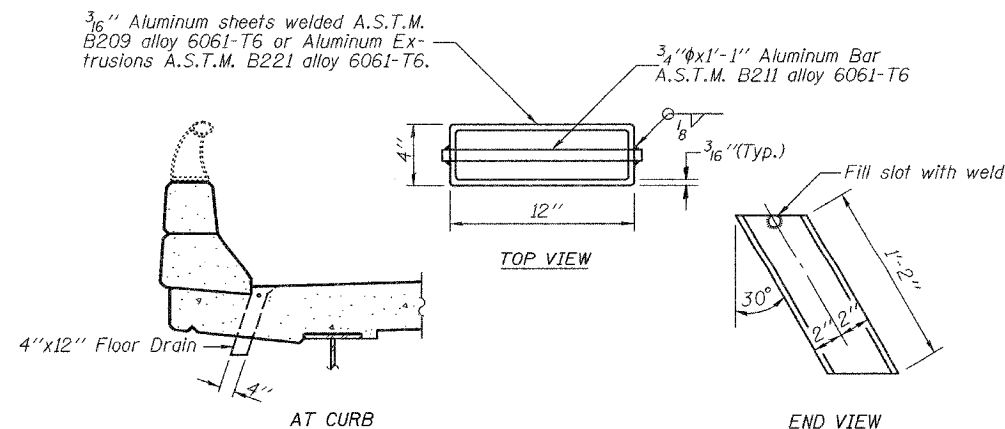
CROSS SECTION

(Looking East)

Note:
Hatched area indicates concrete removal.

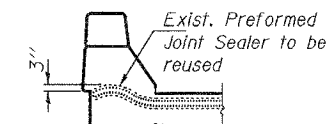


PARAPET JOINT DETAILS



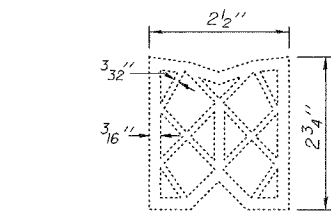
FLOOR DRAIN DETAILS

(2 Required)



TYP. END OF SEAL

(For Information Only)



EXIST. PREFORMED JOINT SEAL

(For Information Only)

DESIGNED	MJT
CHECKED	ATH
DRAWN	balva
CHECKED	MJT ATH

JUNE 6, 2006
EXAMINED *John A. Morris*
ENGINEER OF STRUCTURAL SERVICES
PASSED *Ralph E. Anderson*
ENGINEER OF BRIDGES AND STRUCTURES

BRIDGE REPAIRS
FAI 64 (WB) OVER US 45
WAYNE COUNTY
SN 096-0053 (WB)