

F.A.P. RTE.	SECTION	COUNTY	TOTAL SHEETS	SHEET NO.
774		EFFINGHAM	15	1

D-7 WETLAND MITIGATION - 1

STATE OF ILLINOIS
DEPARTMENT OF TRANSPORTATION
DIVISION OF HIGHWAYS

**PROPOSED
HIGHWAY PLANS**

FAP ROUTE 774 (IL 33)
SECTION D-7 WETLAND MITIGATION - 1
EFFINGHAM COUNTY
C-97-053-06

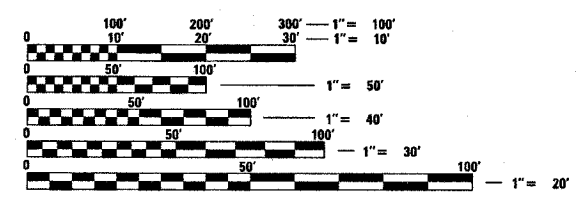
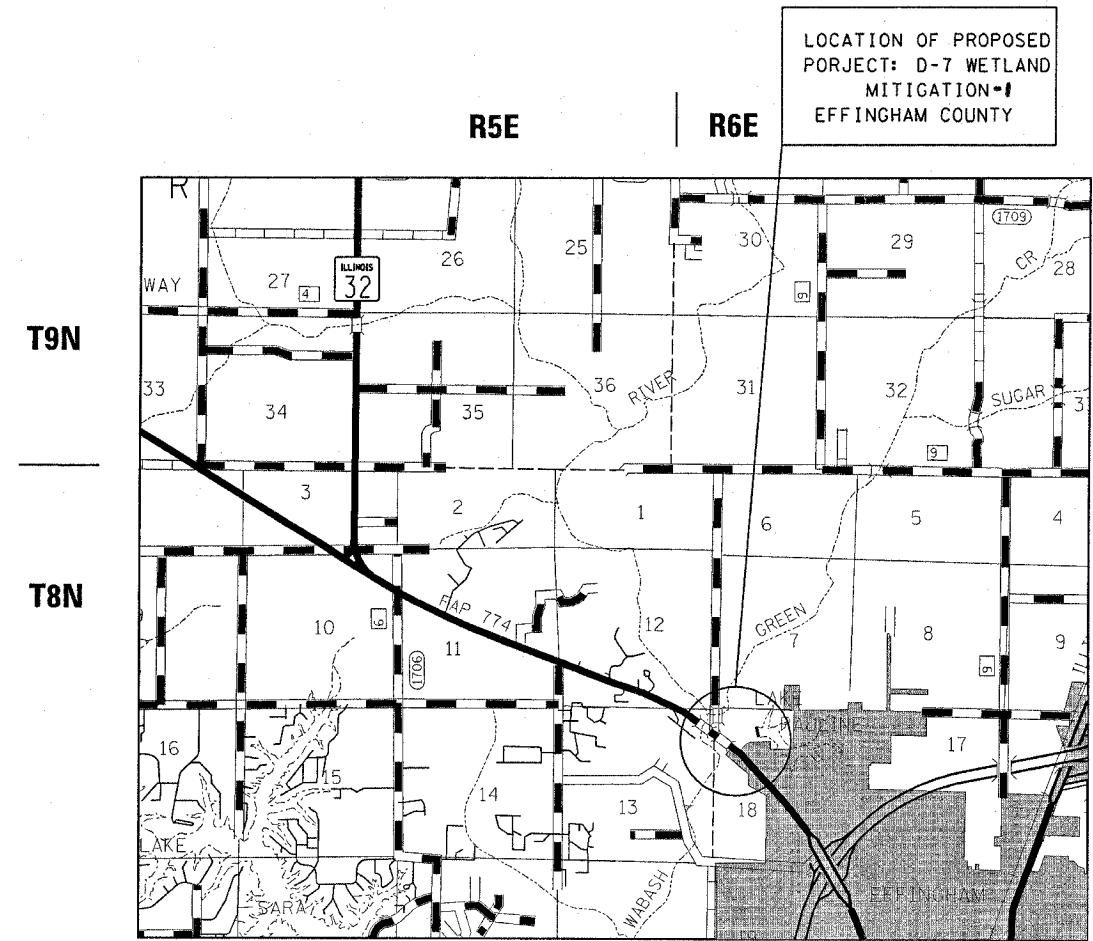
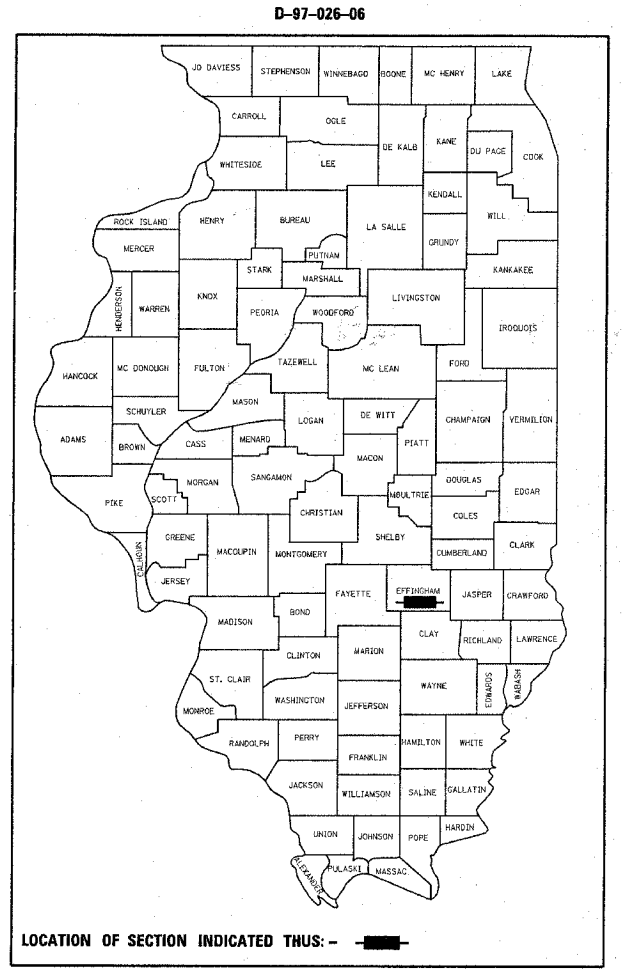
INDEX OF SHEETS

SHEET NO.	DESCRIPTION
1	COVER SHEET AND INDEX OF SHEETS
2	GENERAL NOTES & SUMMARY OF QUANTITIES
3	TYPICAL EARTH BERM SECTION, EARTHWORK SCHEDULE AND PRECAST BLOCK REVETMENT MAT DETAIL
4	TREE PLANTING DETAIL
5	GENERAL PLAN SHEET
6	SEEDING, MOWING, SPRAYING DETAIL & SCHEDULES
7	PLANTING AND TREE DETAIL & SCHEDULES
8	CLEARING AND GRUBBING DETAIL
9	EROSION CONTROL DETAIL & SCHEDULES
10-15	CROSS SECTION SHEETS

THE FOLLOWING STANDARDS ARE A PART OF THESE PLANS AND ARE INCLUDED AFTER SHEET NO. 15.

LIST OF STANDARDS

000001-04	STANDARD SYMBOLS, ABBREVIATIONS AND PATTERNS
280001-02	TEMPORARY EROSION CONTROL SYSTEM



FULL SIZE PLANS HAVE BEEN PREPARED USING STANDARD ENGINEERING SCALES. REDUCED SIZED PLANS WILL NOT CONFORM TO STANDARD SCALES. IN MAKING MEASUREMENTS ON REDUCED PLANS, THE ABOVE SCALES MAY BE USED.

J.U.L.I.E.
JOINT UTILITY LOCATION INFORMATION FOR EXCAVATION
1-800-892-0123

2003 ADT = 10,600

TOWNSHIP : DOUGLAS

STATE OF ILLINOIS
DEPARTMENT OF TRANSPORTATION
DIVISION OF HIGHWAYS

SUBMITTED April 11, 2006
Chris H. Reed
DEPUTY DIRECTOR OF HIGHWAYS, REGION ENGINEER

May 12, 2006
Mike Hine
ENGINEER OF DESIGN AND ENVIRONMENT

May 12, 2006
Milton R. Sees, P.E.
DIRECTOR OF HIGHWAYS, CHIEF ENGINEER

**PRINTED BY THE AUTHORITY
OF THE STATE OF ILLINOIS**

CONTRACT NO. 74154

PROJECT ENGINEER : BILL STANLEY
SQUAD LEADER : MYRA OLTMAN
TELEPHONE : 342-8314