

F.A.P. RTE.	SECTION	COUNTY	TOTAL SHEETS	SHEET NO.
774		EFFINGHAM	15	7
STA.		TO STA.		
FED. ROAD DIST. NO.		ILLINOIS FED. AID PROJECT		
D-7 WETLAND MITIGATION - 1				

TREE PLANTING SCHEDULE

TREE, CARYA LACINOSA (SHELLBARK HICKORY), CONTAINER GROWN, 3-GALLON	17	EACH
TREE, CARYA ILINOENSIS (PECAN), CONTAINER GROWN, 3-GALLON	17	EACH
TREE, PLATANUS OCCIDENTALIS (SYCAMORE), CONTAINER GROWN, 3-GALLON	17	EACH
TREE, QUERCUS BICOLOR (SWAMP WHITE OAK), CONTAINER GROWN, 3-GALLON	17	EACH
TREE, QUERCUS PALUSTRIS (PIN OAK), CONTAINER GROWN, 3-GALLON	17	EACH
<b>TOTAL</b>	<b>85</b>	<b>EACH</b>
PLANT AT 25 FOOT CENTERS		

PERENNIAL PLANTS, WETLAND EMERGENT TYPE

MARSH AREA	1.7	UNIT
PLANT AT 5 FOOT CENTERS		

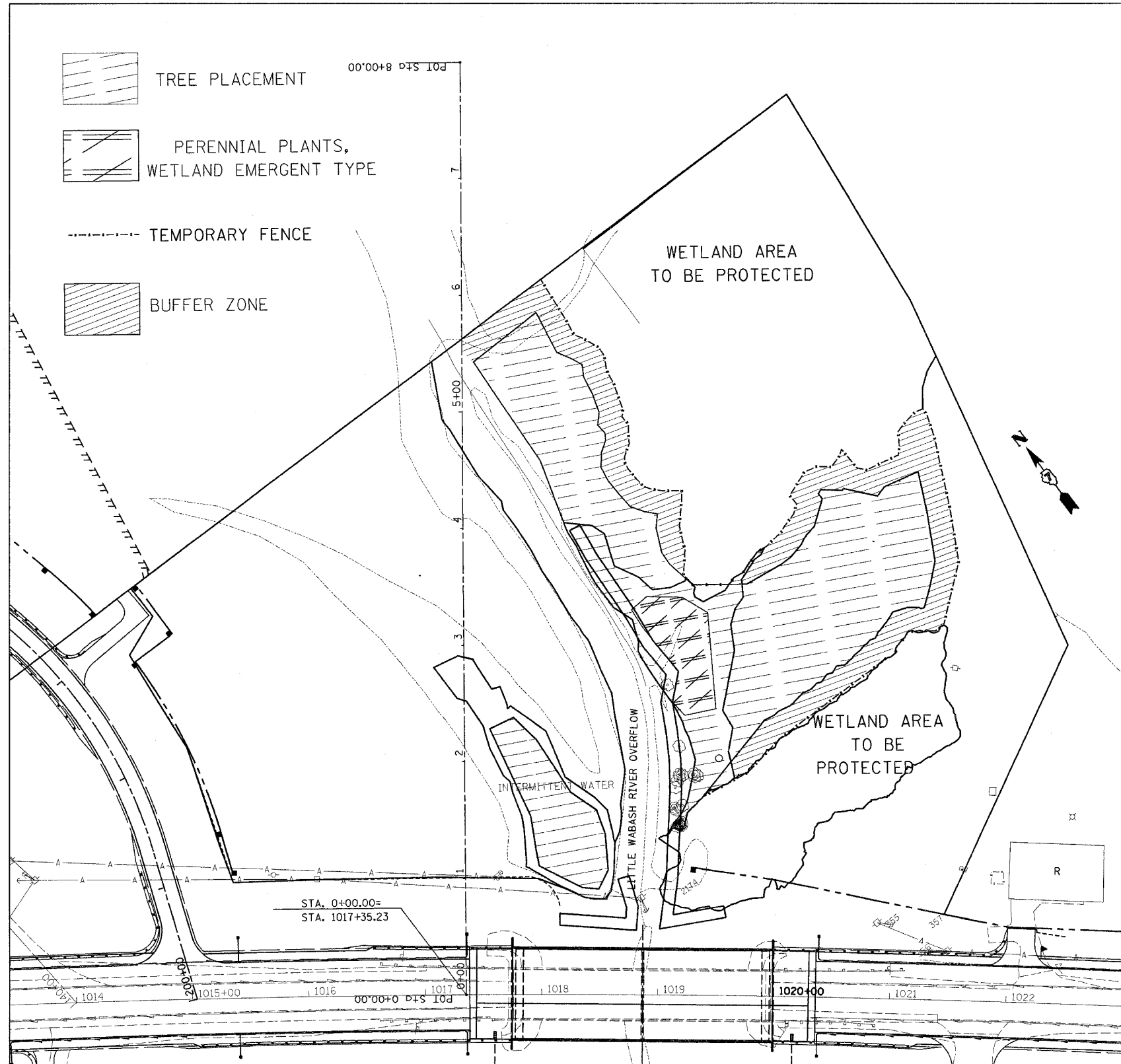
TREE PLANTING

STATION	OFFSETS
0+90	114.7
0+91	101.1
1+06	122.8
1+10	63.4
1+37	120.6
1+53	56.5
1+58	113.2
1+73	91.0
2+18	61.7
2+28	22.0
2+37	42.3

PERENNIAL PLANTS

WETLAND EMERGENT TYPE	
STATION	OFFSET
2+38	144.5
2+44	216.7
2+50	179.5
2+76	184.5
3+03	163.0
3+13	154.4
3+26	210.4
3+29	144.5
3+39	188.4
3+40	157.8

USE BUFFER ZONE EDGE FOR ALL OTHER TREE PLANTING LIMITS



REVISIONS	
NAME	DATE

ILLINOIS DEPARTMENT OF TRANSPORTATION

**PLANTING, TREE DETAILS, & SCHEDULES**

SCALE: VERT. DATE: HORIZ.

DRAWN BY: CHECKED BY: