

F.A. RTE.	SECTION	COUNTY	TOTAL SHEETS	SHEET NO.
*	**	***	310	64

STA. TO STA.

CONTRACT NO. 74155

- * PARK ROADS
- ** SFWA PARK ROADS 2003-1
- *** MOULTRIE AND SHELBY

EXIST. CURVE PL30C4
 PI STA. = 5+18.98
 $\Delta = 116^\circ 25' 54''$ (LT)
 $D = 127^\circ 19' 26''$
 $R = 45.00'$
 $T = 72.62'$
 $L = 91.45'$
 $E = 40.43'$
 P.C. STA. = 4+46.36
 P.T. STA. = 5+37.81

EXIST. CURVE PL30C5
 PI STA. = 5+78.84
 $\Delta = 26^\circ 03' 18''$ (LT)
 $D = 57^\circ 17' 45''$
 $R = 100.00'$
 $T = 23.14'$
 $L = 45.47'$
 $E = 2.64'$
 P.C. STA. = 5+55.71
 P.T. STA. = 6+01.18

EXIST. CURVE PL30C1
 PI STA. = 0+36.67
 $\Delta = 31^\circ 18' 09''$ (LT)
 $D = 76^\circ 23' 40''$
 $R = 75.00'$
 $T = 21.01'$
 $L = 40.97'$
 $E = 2.89'$
 P.C. STA. = 0+15.66
 P.T. STA. = 0+56.63

EXIST. CURVE PL30C3
 PI STA. = 4+23.58
 $\Delta = 73^\circ 22' 36''$ (LT)
 $D = 168^\circ 31' 01''$
 $R = 34.00'$
 $T = 25.33'$
 $L = 43.54'$
 $E = 8.40'$
 P.C. STA. = 3+98.25
 P.T. STA. = 4+41.79

EXIST. CURVE PL30C2
 PI STA. = 2+36.53
 $\Delta = 34^\circ 03' 44''$ (RT)
 $D = 38^\circ 11' 50''$
 $R = 150.00'$
 $T = 45.95'$
 $L = 89.17'$
 $E = 6.88'$
 P.C. STA. = 1+90.59
 P.T. STA. = 2+79.76

CONSTRUCTION LIMITS
 STA 4+50.00
 PROPOSED PIPE CULVERTS,
 CLASS D, TYPE 1 12"
 USFL = 621.10
 DSFL = 619.73

BEGIN CONSTRUCTION PARKING LOT 30
 STA 0+07.47
 LOOP ROAD
 STA 4+03.25

BEGIN CONSTRUCTION TR 117B
 STA 10+40.00

BEGIN CONSTRUCTION LOOP ROAD TO PARKING LOT 30
 STA 0+06.15

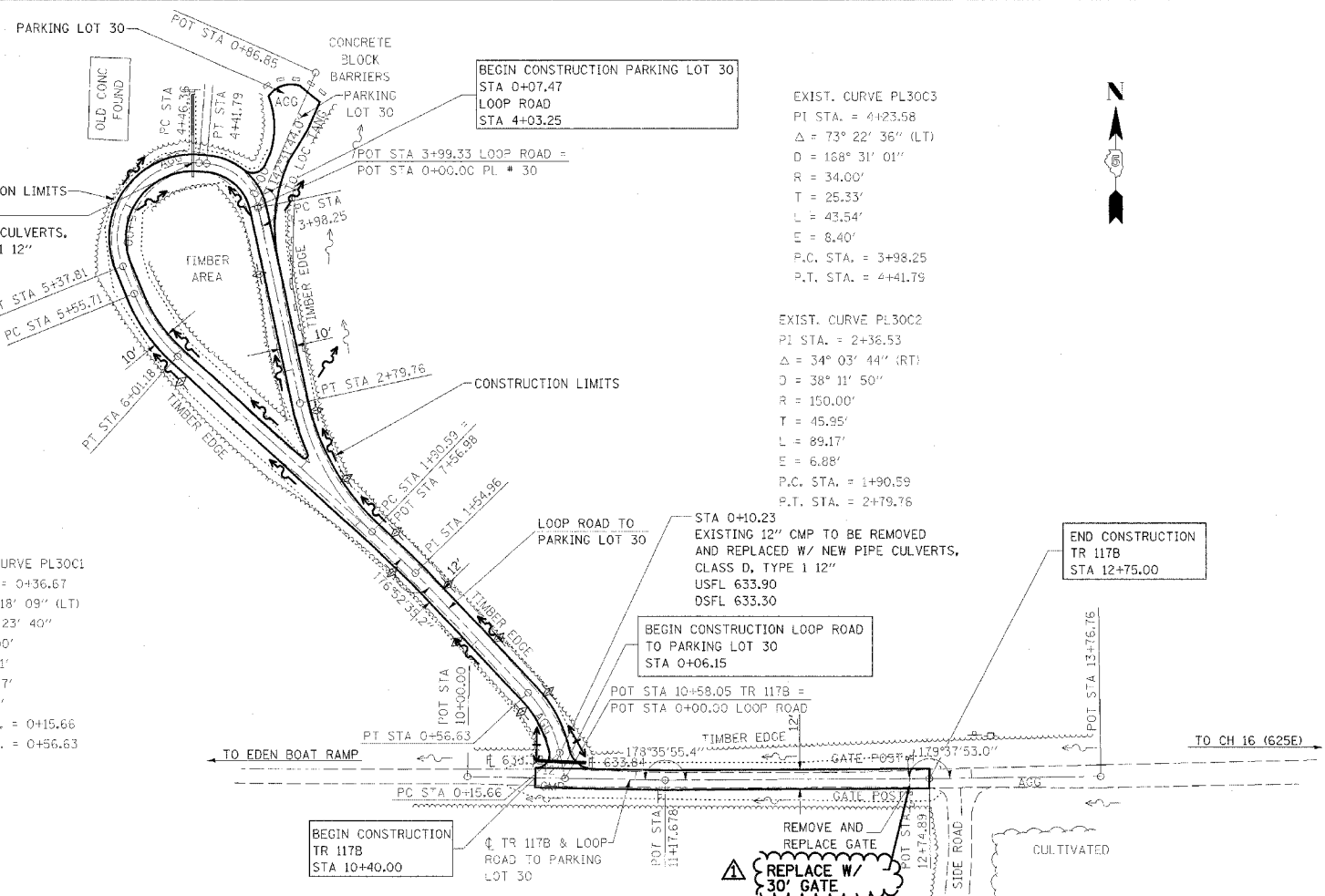
END CONSTRUCTION TR 117B
 STA 12+75.00

NOTE:
 LOOP ROAD
 STA 0+06.15 TO STA 7+56.98
 SURFACE IMPROVEMENTS,
 ADD 3" AGGREGATE

NOTE:
 TR 117B
 STA 10+40.00 TO STA 12+75.00
 SURFACE IMPROVEMENTS,
 ADD 3" AGGREGATE

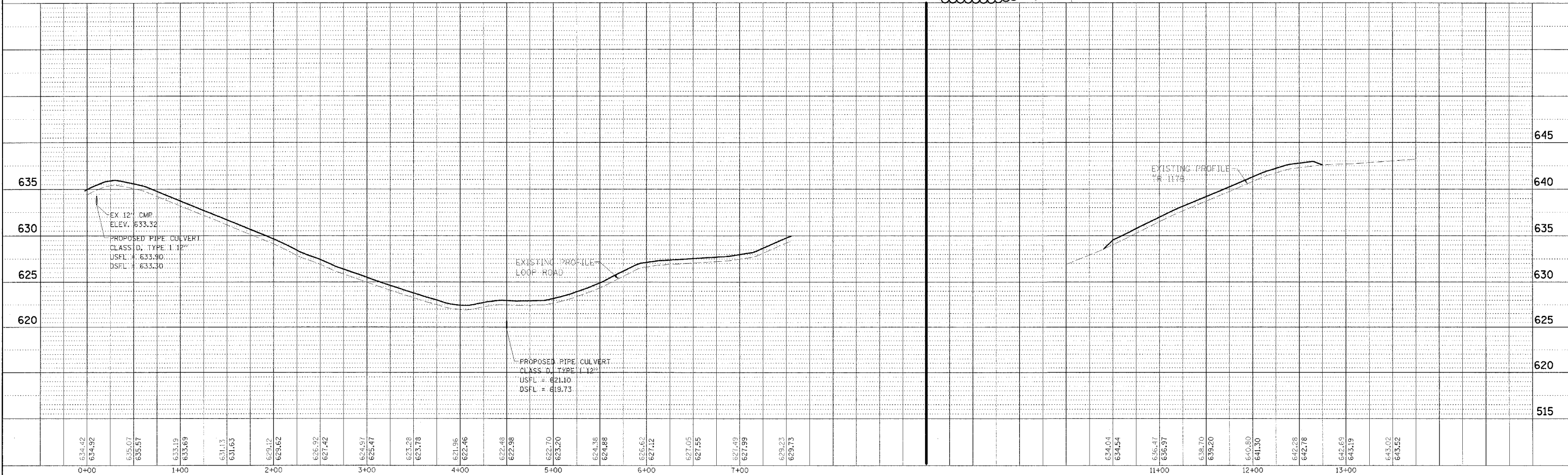


REVISOR'S MARK - REVISED BY FGI 11/23/2005



DATE	BY	REVISION

DATE	BY	REVISION



WEST OKAW FISH & WILDLIFE UNIT PLAN AND PROFILE, TR 117B AND LOOP ROAD TO PARKING LOT 30