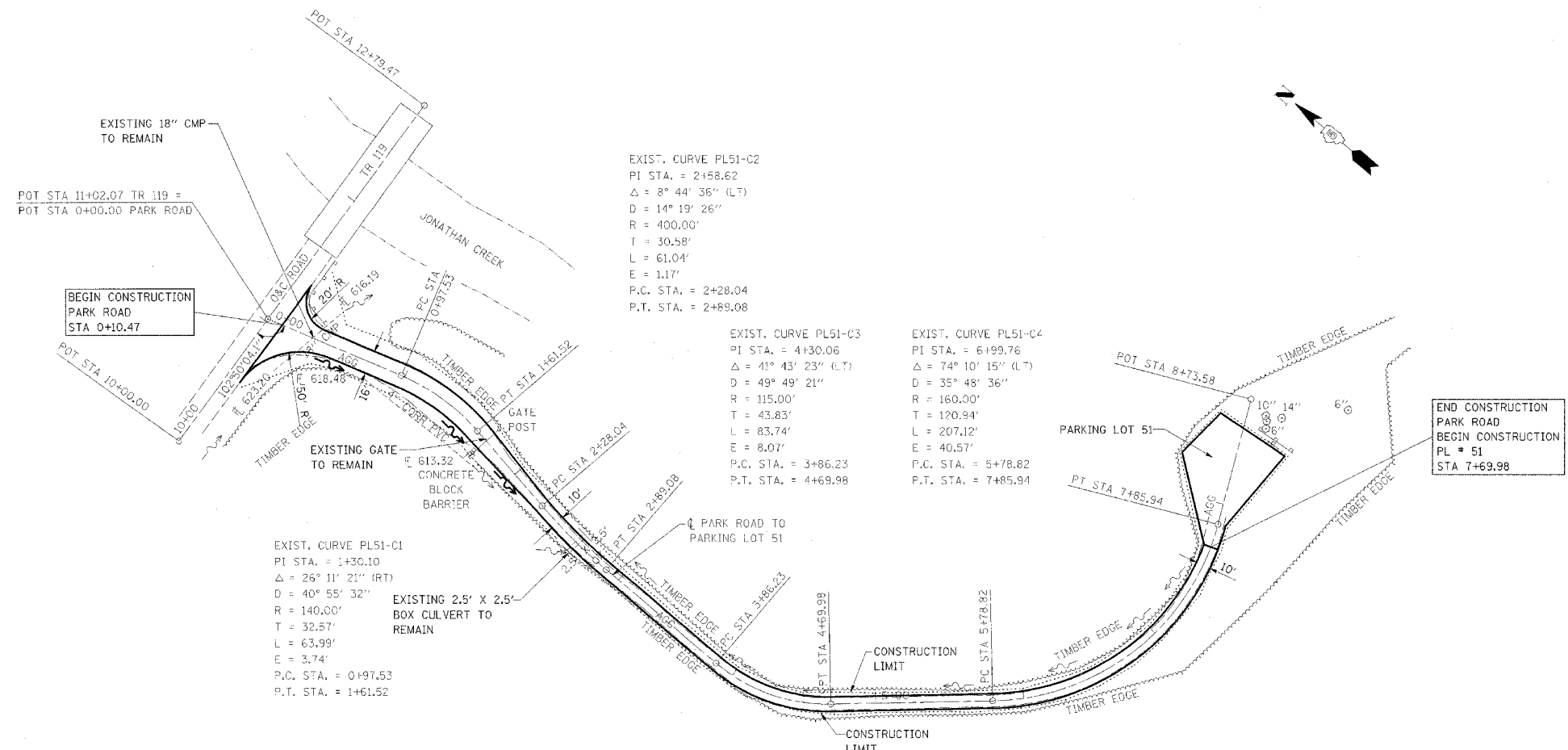


F.A. RTE.	SECTION	COUNTY	TOTAL SHEETS	SHEET NO.
*	**	***	310	65

CONTRACT NO. 74155

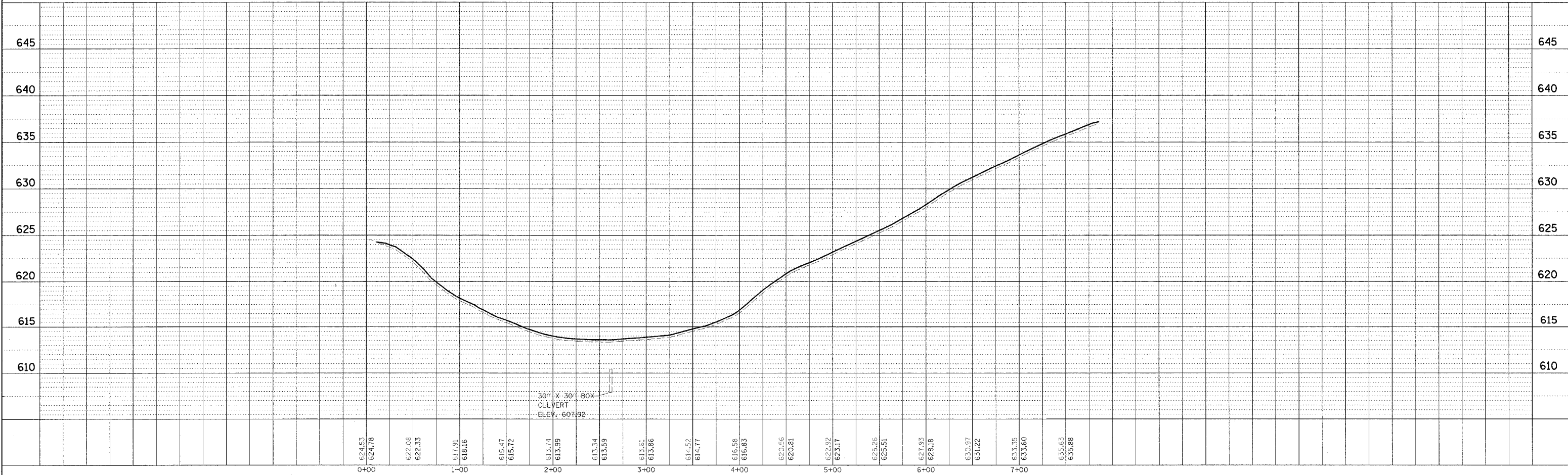
- * PARK ROADS
- ** SFWA PARK ROADS 2003-1
- *** MOULTRIE AND SHELBY



REVISD BY FGI 11/23/2005

DATE	BY

DATE	BY



KASKASKIA FISH & WILDLIFE UNIT PLAN AND PROFILE, PARK ROAD TO PARKING LOT 51