

F.A. RTE.	SECTION	COUNTY	TOTAL SHEETS	SHEET NO.
*	**	***	310	68

CONTRACT NO. 74155

• PARK ROADS  
 \*\* SFWA PARK ROADS 2003-1  
 \*\*\* MOULTRIE AND SHELBY

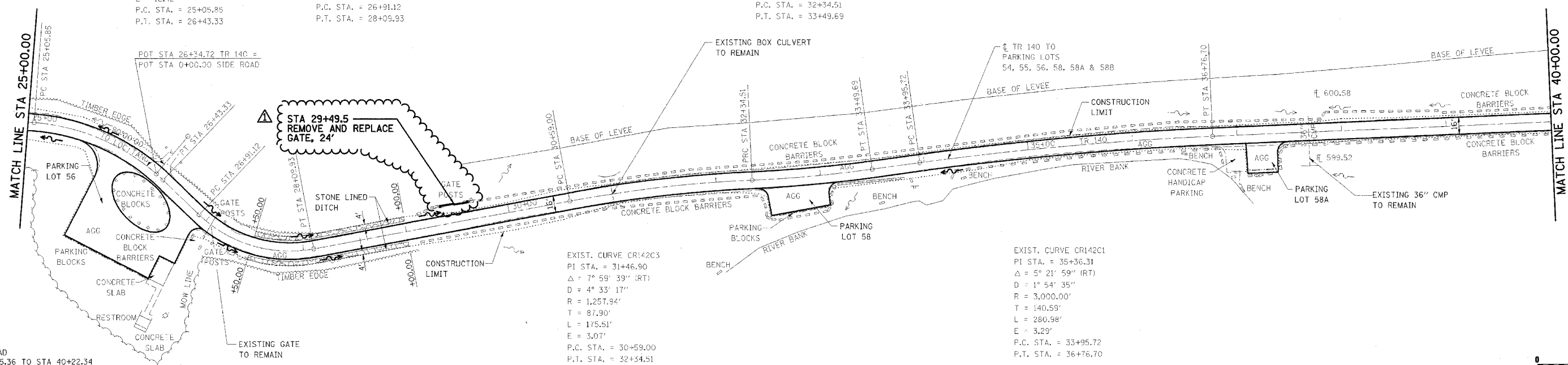
EXIST. CURVE CR142C5  
 PI STA. = 25+77.43  
 $\Delta = 39^\circ 23' 00''$  (RT)  
 $D = 28^\circ 38' 52''$   
 $R = 200.00'$   
 $T = 71.58'$   
 $L = 137.47'$   
 $E = 12.42'$   
 P.C. STA. = 25+05.85  
 P.T. STA. = 26+43.33

EXIST. CURVE CR142C4  
 PI STA. = 27+55.44  
 $\Delta = 54^\circ 27' 25''$  (LT)  
 $D = 45^\circ 50' 12''$   
 $R = 125.00'$   
 $T = 64.32'$   
 $L = 118.81'$   
 $E = 15.58'$   
 P.C. STA. = 26+91.12  
 P.T. STA. = 28+05.93

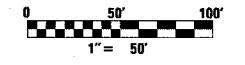
EXIST. CURVE CR142C2  
 PI STA. = 32+92.14  
 $\Delta = 5^\circ 14' 24''$  (LT)  
 $D = 4^\circ 32' 57''$   
 $R = 1,259.44'$   
 $T = 57.63'$   
 $L = 115.18'$   
 $E = 1.32'$   
 P.C. STA. = 32+34.51  
 P.T. STA. = 33+49.69

EXIST. CURVE CR142C3  
 PI STA. = 31+46.90  
 $\Delta = 7^\circ 59' 39''$  (RT)  
 $D = 4^\circ 33' 17''$   
 $R = 1,257.94'$   
 $T = 87.90'$   
 $L = 175.51'$   
 $E = 3.07'$   
 P.C. STA. = 30+59.00  
 P.T. STA. = 32+34.51

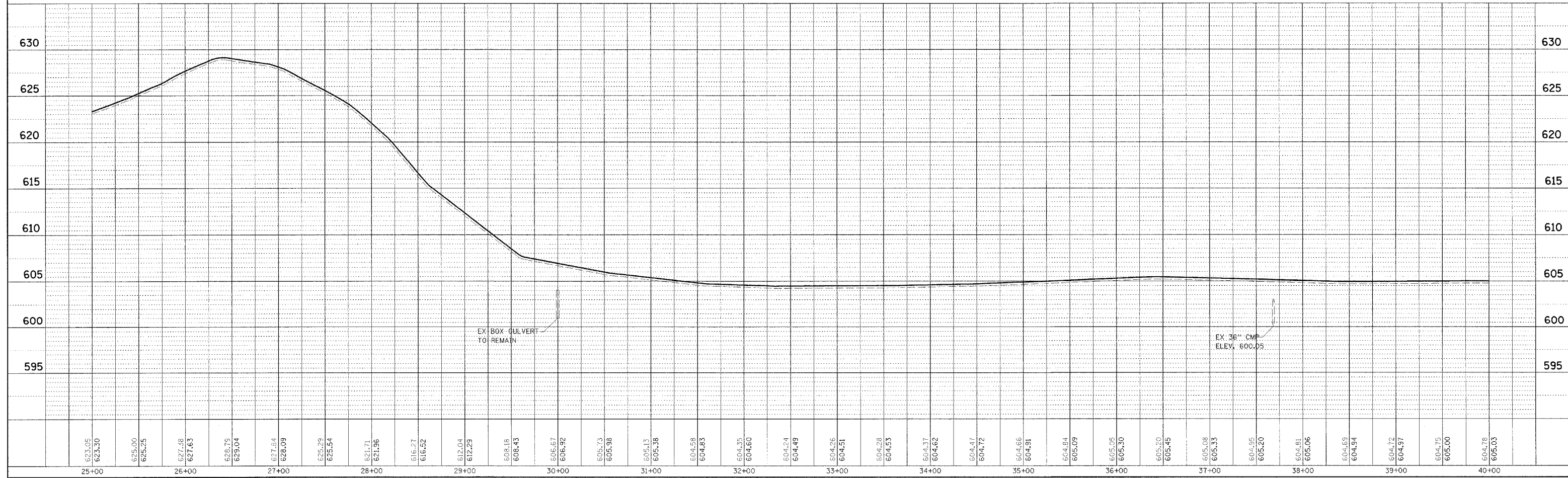
EXIST. CURVE CR142C1  
 PI STA. = 35+36.31  
 $\Delta = 5^\circ 21' 59''$  (RT)  
 $D = 1^\circ 54' 35''$   
 $R = 3,000.00'$   
 $T = 140.59'$   
 $L = 280.98'$   
 $E = 3.29'$   
 P.C. STA. = 33+95.72  
 P.T. STA. = 36+76.70



NOTE:  
 PARK ROAD  
 STA 11+55.36 TO STA 40+22.34  
 SURFACE IMPROVEMENTS,  
 ADD 3" AGGREGATE



▲ - REVISED BY FGI 11/23/2005



KASKASKIA FISH & WILDLIFE UNIT PLAN AND PROFILE, TR 140 TO PARKING LOTS 54, 55, 56, 58, 58A & 58B

DATE	BY	REVISION

DATE	BY	REVISION