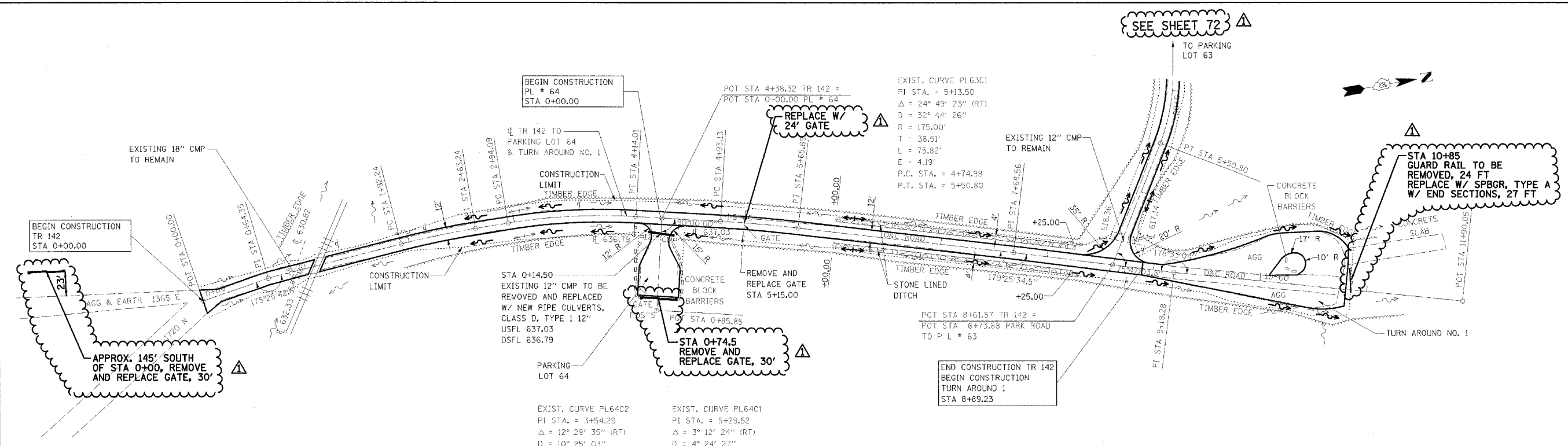
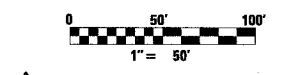


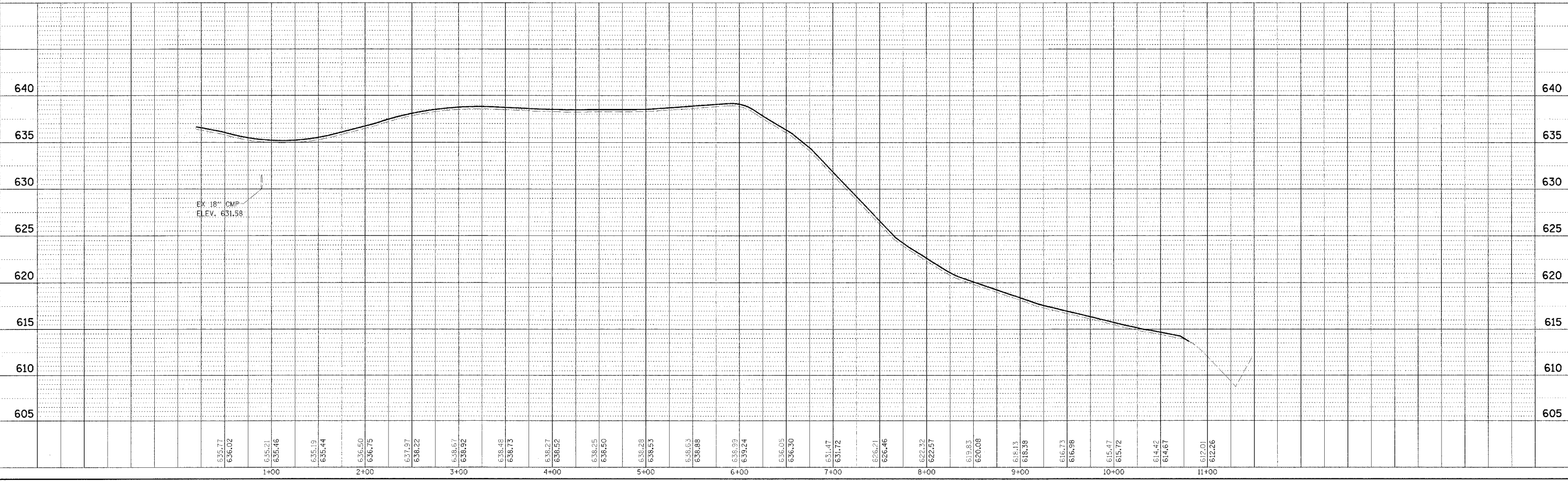
F.A. RTE.	SECTION	COUNTY	TOTAL SHEETS	SHEET NO.
*	**	***	310	73
STA. TO STA.				
CONTRACT NO. 74155				
* PARK ROADS				
** SFWA PARK ROADS 2003-1				
*** MOULTRIE AND SHELBY				



NOTE:
 TR 142
 STA 0+00.00 TO STA 8+89.23
 SCARIFY ROAD, ADD 3" AGGREGATE
 AND ADD A-2 TREATMENT



△ - REVISED BY FGI 11/23/2005



KASKASKIA FISH & WILDLIFE UNIT PLAN AND PROFILE, TR 142 TO PARKING LOT 64 & TURN AROUND NO. 1

DATE	BY	REVISION

DATE	BY	REVISION