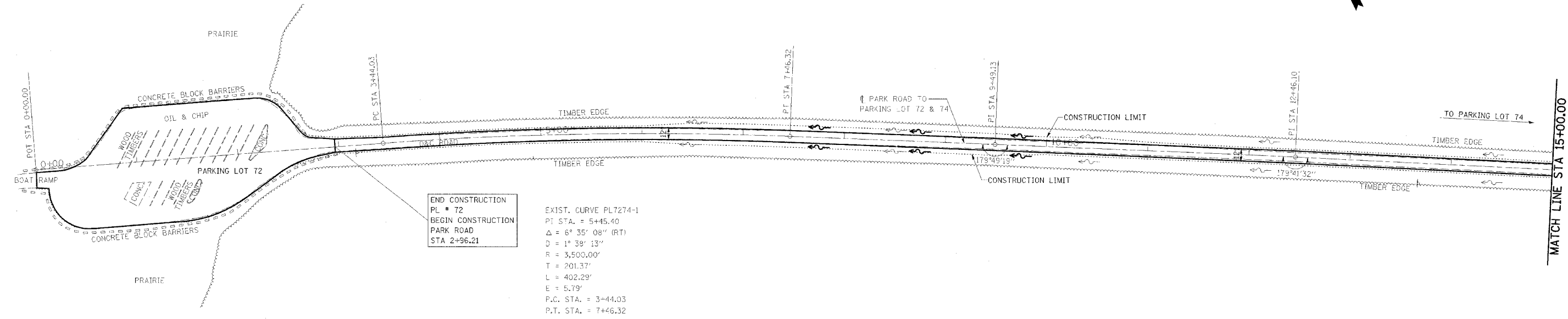


F.A. RTE.	SECTION	COUNTY	TOTAL SHEETS	SHEET NO.
*	**	***	310	81

STA. \_\_\_\_\_ TO STA. \_\_\_\_\_  
CONTRACT NO. 74155

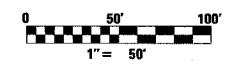
- PARK ROADS
- SFWA PARK ROADS 2003-1
- MOULTRIE AND SHELBY



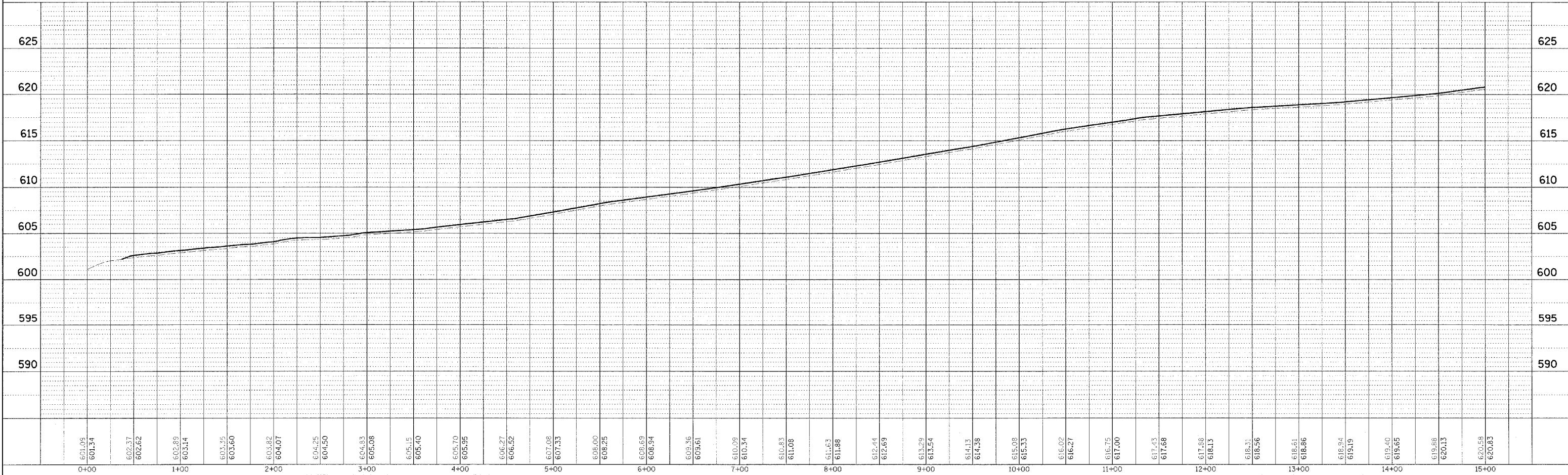
END CONSTRUCTION  
PL # 72  
BEGIN CONSTRUCTION  
PARK ROAD  
STA 2+96.21

EXIST. CURVE PL7274-1  
P.I. STA. = 5+45.40  
 $\Delta = 6^\circ 35' 08''$  (RT)  
D =  $1^\circ 39' 13''$   
R = 3,500.00'  
T = 201.37'  
L = 402.29'  
E = 5.79'  
P.C. STA. = 3+44.03  
P.T. STA. = 7+46.32

NOTE:  
PARK ROAD  
STA 0+00.00 TO STA 41+68.57  
SCARIFY ROAD AND PARKING  
LOT 72, ADD 3" AGGREGATE  
AND ADD A-2 TREATMENT



▲ - REVISED BY FGI 11/23/2005



PLANN	DATE

PROFILE	DATE