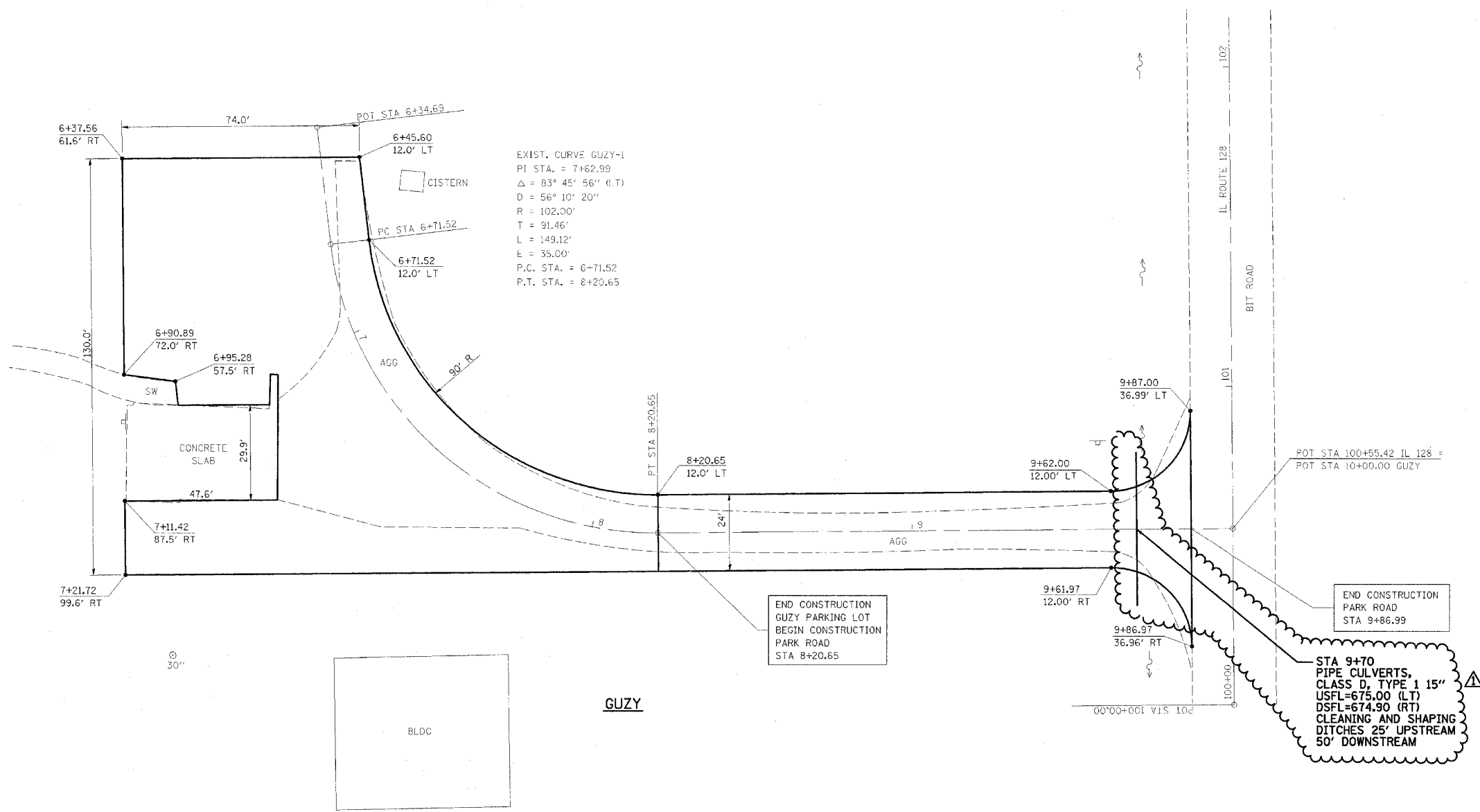


F.A. RTE.	SECTION	COUNTY	TOTAL SHEETS	SHEET NO.
*	**	***	310	86

CONTRACT NO. 74155

- * PARK ROADS
- ** SFWA PARK ROADS 2003-1
- *** MOULTRIE AND SHELBY



NOTE:
 GUZY
 END STA 8+20.65
 SURFACE IMPROVEMENTS,
 ADD 3" AGGREGATE



REVISIONS	
NAME	DATE
FGI	11/23/2005

ILLINOIS DEPARTMENT OF TRANSPORTATION

**MARGARET GUZY POTHOLE
 WETLAND RESERVE
 PARKING LOT PLAN**

SCALE: _____ DATE _____

DRAWN BY BANDY
 CHECKED BY STEUART