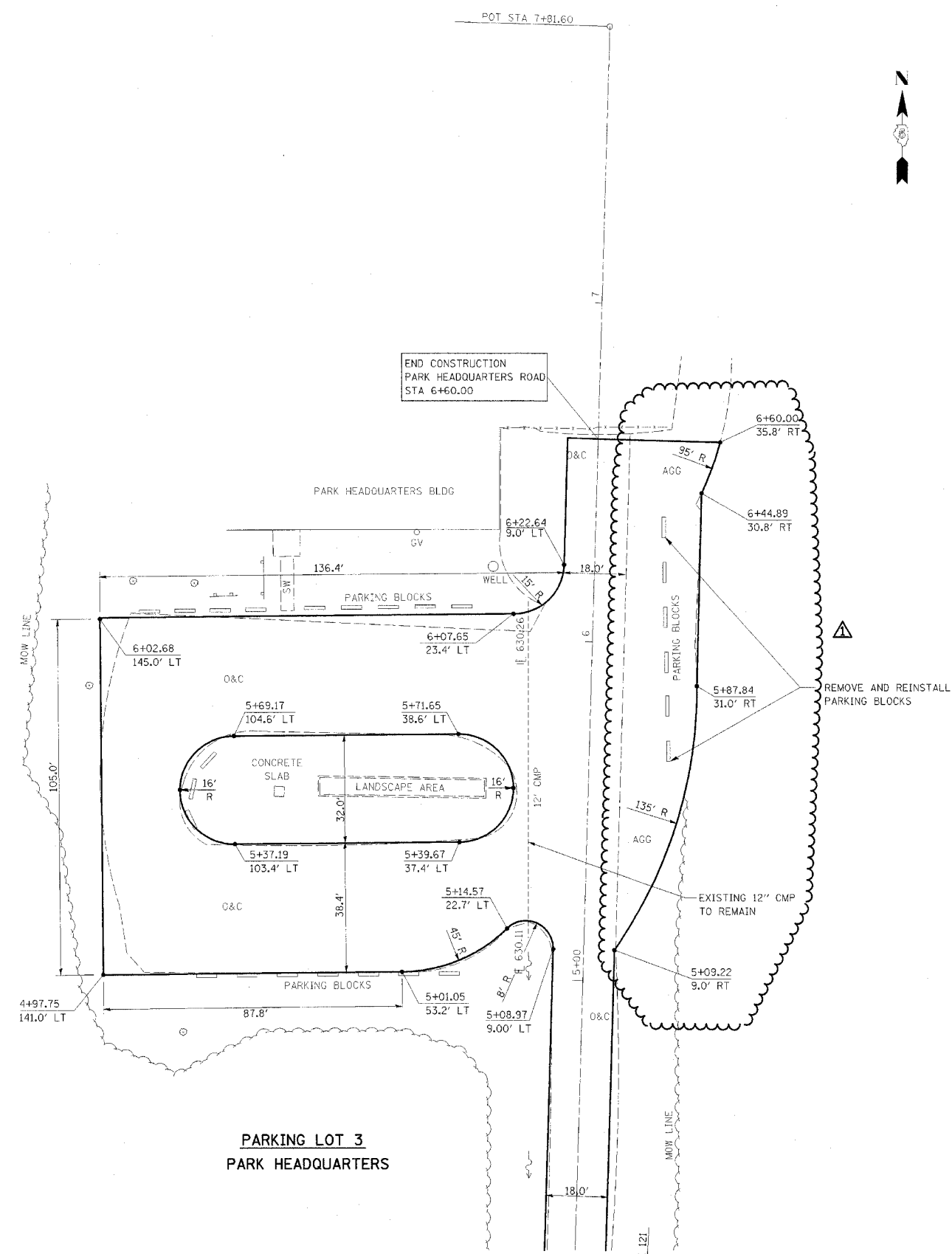


F.A. RTE.	SECTION	COUNTY	TOTAL SHEETS	SHEET NO.
*	**	***	310	88

CONTRACT NO. 74155

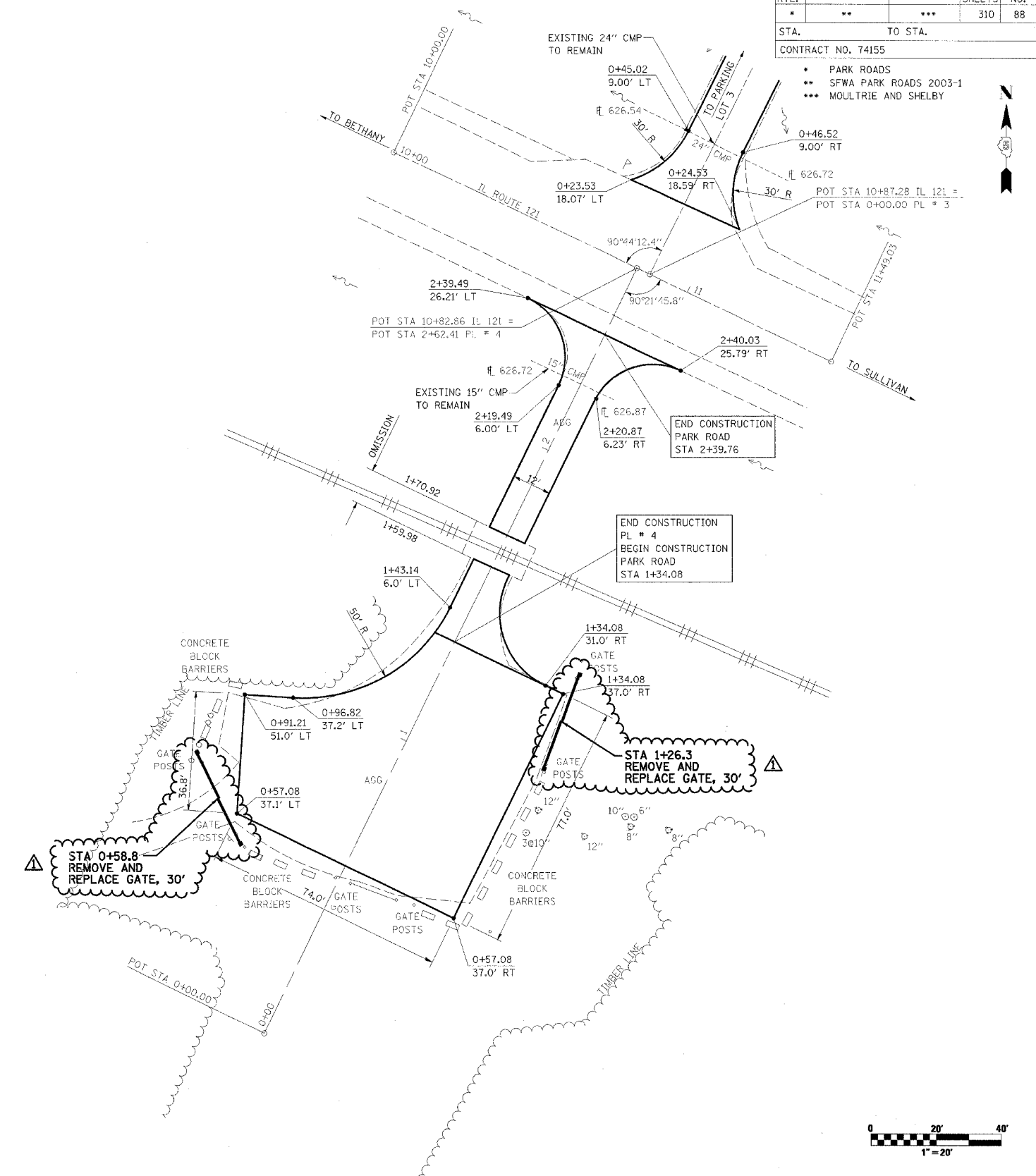
STA. TO STA.

• PARK ROADS  
 \*\* SFWA PARK ROADS 2003-1  
 \*\*\* MOUTRIE AND SHELBY



**PARKING LOT 3  
PARK HEADQUARTERS**

NOTE:  
 PARKING LOT 3  
 SCARIFY ROAD AND PARKING  
 LOT 3 (INCLUDE PARKING AREA  
 FROM STA 5+09.22 TO STA 6+60.00 RT),  
 ADD 3" AGGREGATE,  
 AND ADD A-2 TREATMENT



**PARKING LOT 4**

NOTE:  
 PARKING LOT 4  
 END STA 1+34.08  
 SURFACE IMPROVEMENTS,  
 ADD 3" AGGREGATE

NOTE:  
 PARK ROAD  
 STA 1+34.08 TO STA 2+39.76  
 SURFACE IMPROVEMENTS,  
 ADD 3" AGGREGATE

REVISIONS	
NAME	DATE
FGI	11/23/2005

ILLINOIS DEPARTMENT OF TRANSPORTATION  
**WEST OKAW FISH & WILDLIFE UNIT**  
**PARKING LOT PLAN**  
**PL 3, & PL 4**

SCALE: \_\_\_\_\_  
 DATE \_\_\_\_\_

DRAWN BY BANDY  
 CHECKED BY STEUART