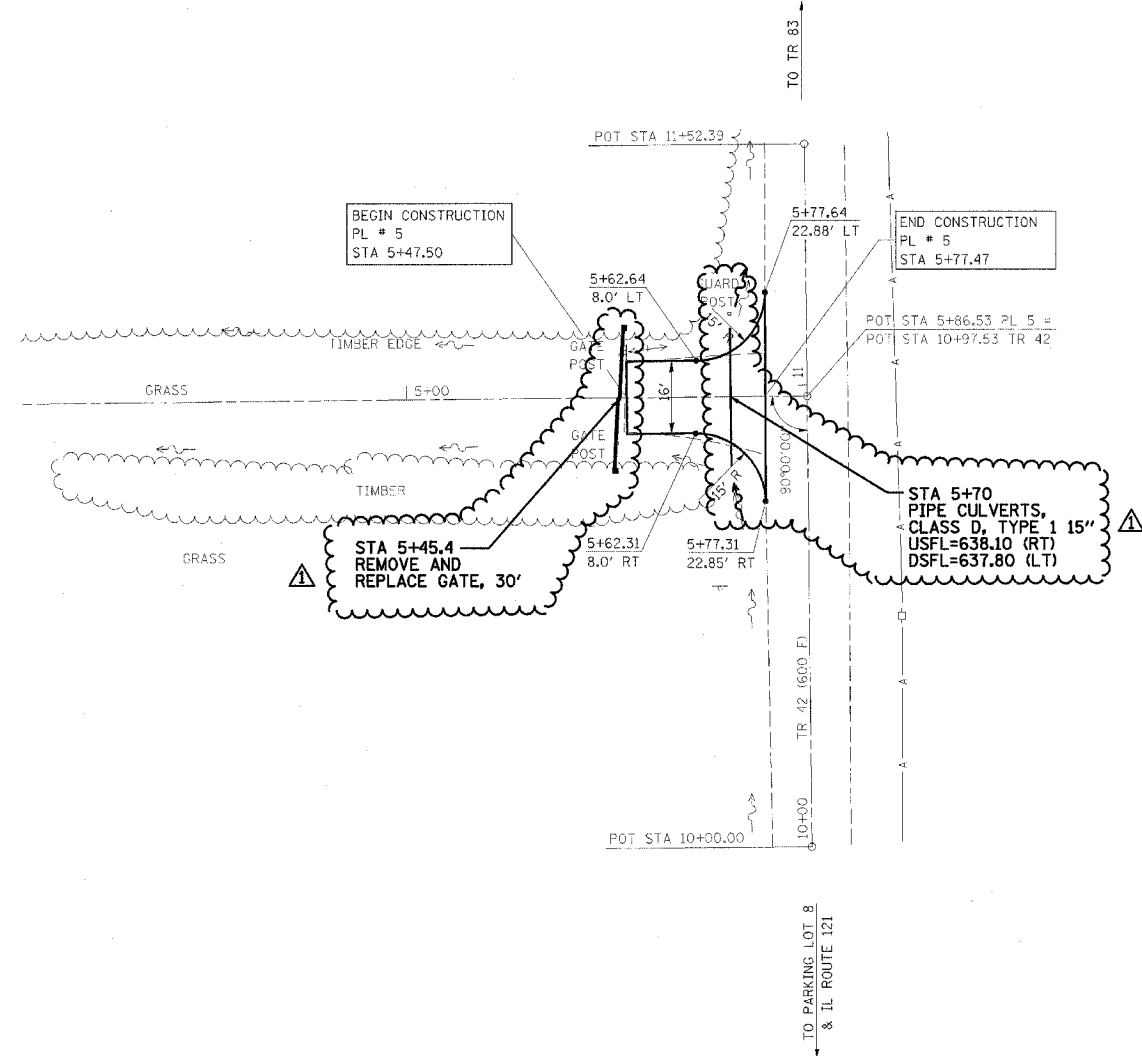


F.A. RTE.	SECTION	COUNTY	TOTAL SHEETS	SHEET NO.
*	**	***	310	89

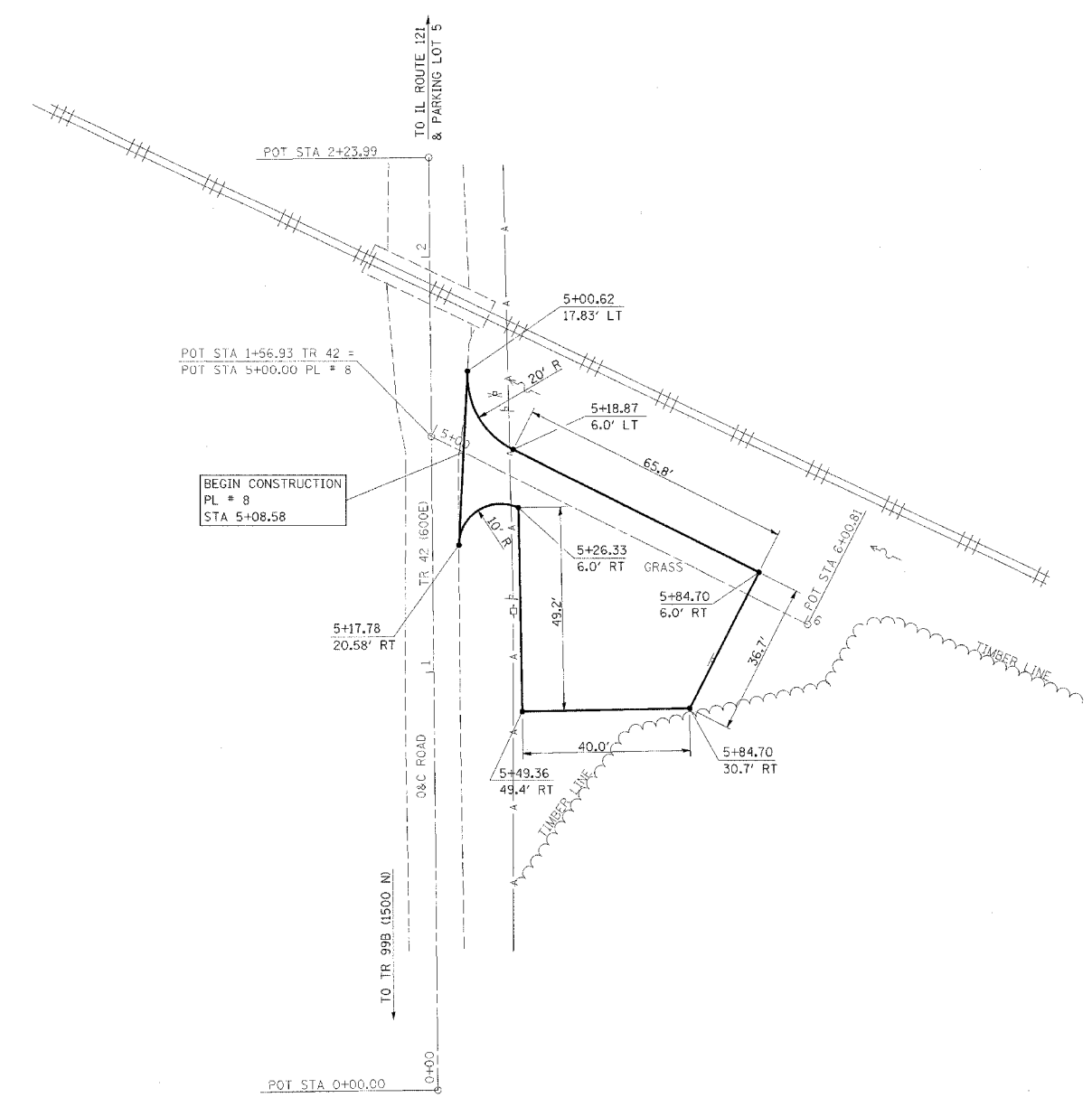
CONTRACT NO. 74155

- PARK ROADS
- SFWA PARK ROADS 2003-1
- MOULTRIE AND SHELBY



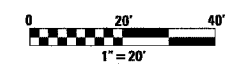
PARKING LOT 5

NOTE:
 PARKING LOT 5
 STA 5+47.50 TO STA 5+77.47
 SURFACE IMPROVEMENTS,
 ADD 3" AGGREGATE



PARKING LOT 8

NOTE:
 PARKING LOT 8
 BEGIN STA 5+08.58
 SURFACE IMPROVEMENTS,
 ADD 3" AGGREGATE



REVISIONS	
NAME	DATE
FGI	11/23/2005

ILLINOIS DEPARTMENT OF TRANSPORTATION
WEST OKAW FISH & WILDLIFE UNIT
PARKING LOT PLAN
PL 5 & PL 8

SCALE: _____
 DATE _____

DRAWN BY BANDY
 CHECKED BY STEUART