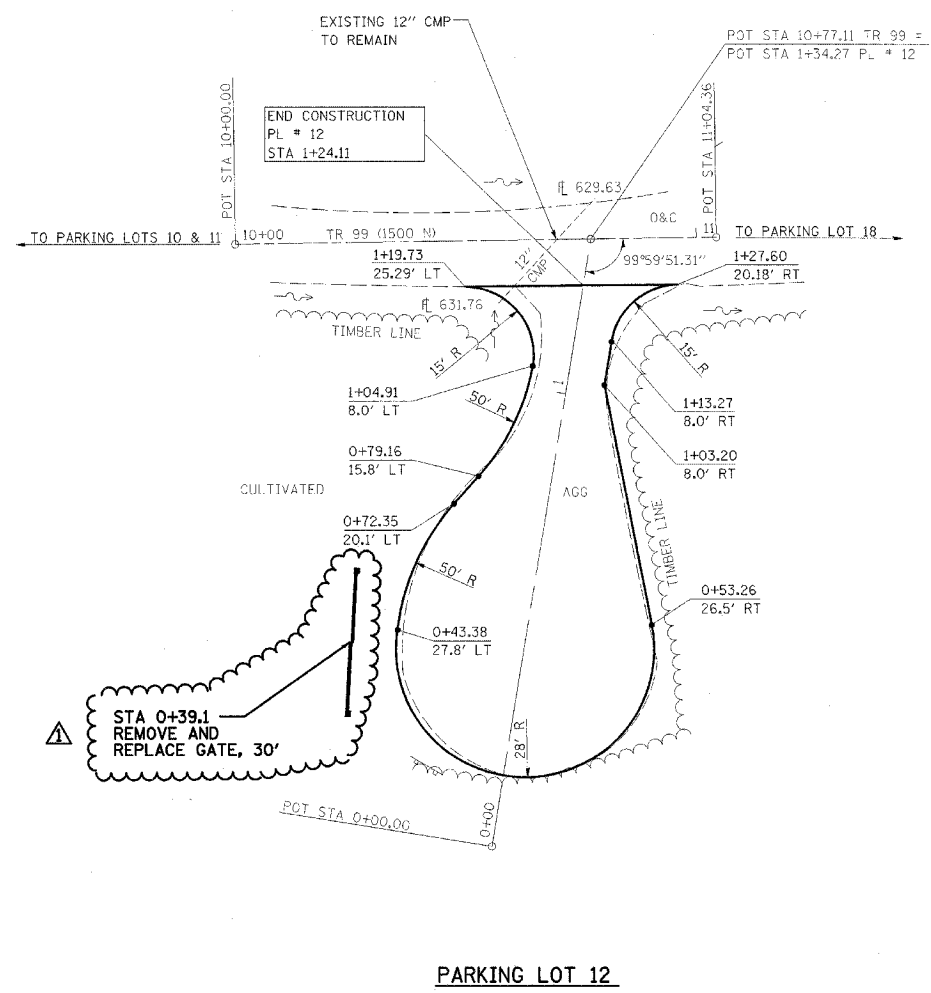
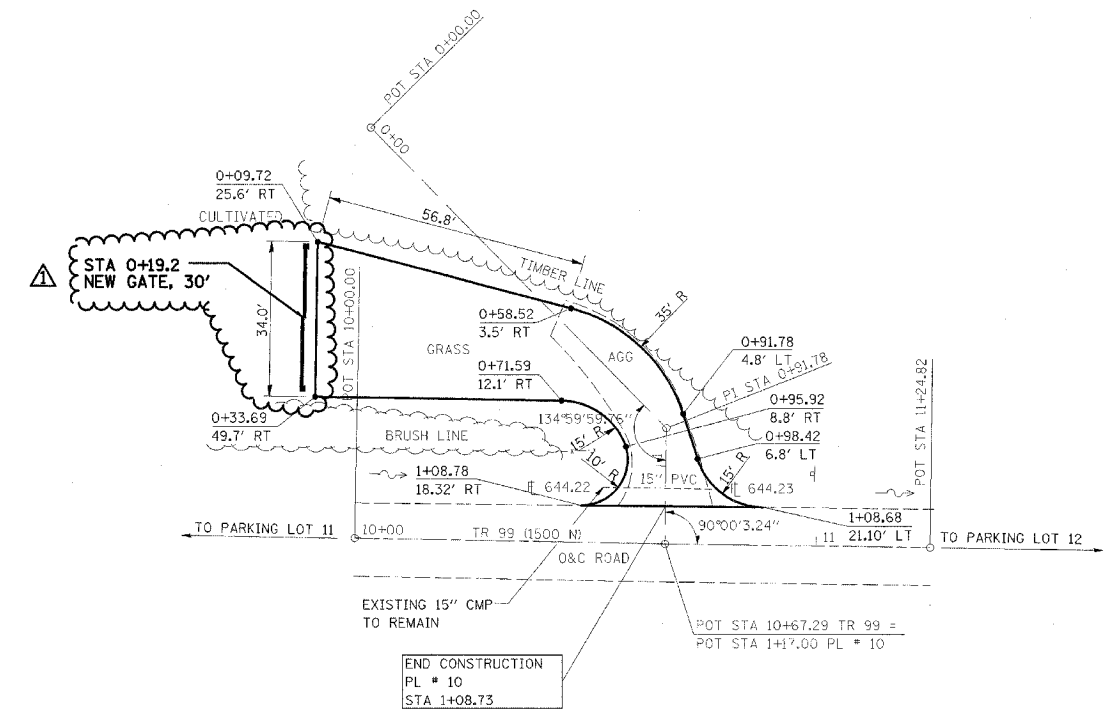


F.A. RTE.	SECTION	COUNTY	TOTAL SHEETS	SHEET NO.
•	••	•••	310	92
STA.		TO STA.		
CONTRACT NO. 74155				
• PARK ROADS				
•• SFWA PARK ROADS 2003-1				
••• MOULTRIE AND SHELBY				



PARKING LOT 12

NOTE:
PARKING LOT 12
END STA 1+24.11
SURFACE IMPROVEMENTS,
ADD 3" AGGREGATE



PARKING LOT 10

NOTE:
PARKING LOT 10
END STA 1+08.73
SURFACE IMPROVEMENTS,
ADD 3" AGGREGATE



REVISIONS	
NAME	DATE
FGI	11/23/2005

ILLINOIS DEPARTMENT OF TRANSPORTATION
WEST OKAW FISH & WILDLIFE UNIT
PARKING LOT PLAN
PL 12 & PL 10

SCALE: _____
DATE _____

DRAWN BY BANDY
CHECKED BY STEUART