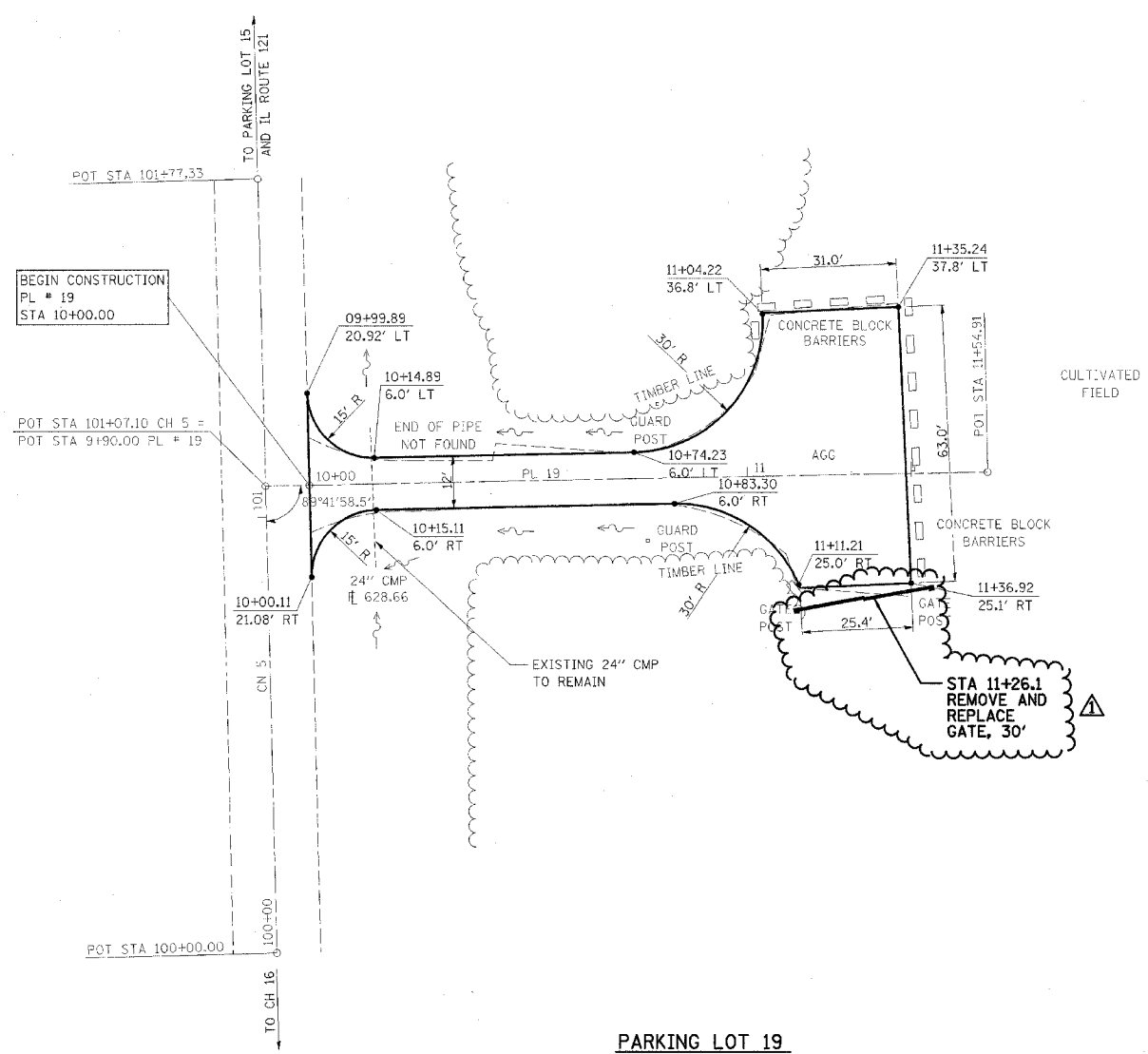


| F.A. RTE. | SECTION | COUNTY | TOTAL SHEETS | SHEET NO. |
|-----------|---------|--------|--------------|-----------|
| * | ** | *** | 310 | 95 |

CONTRACT NO. 74155

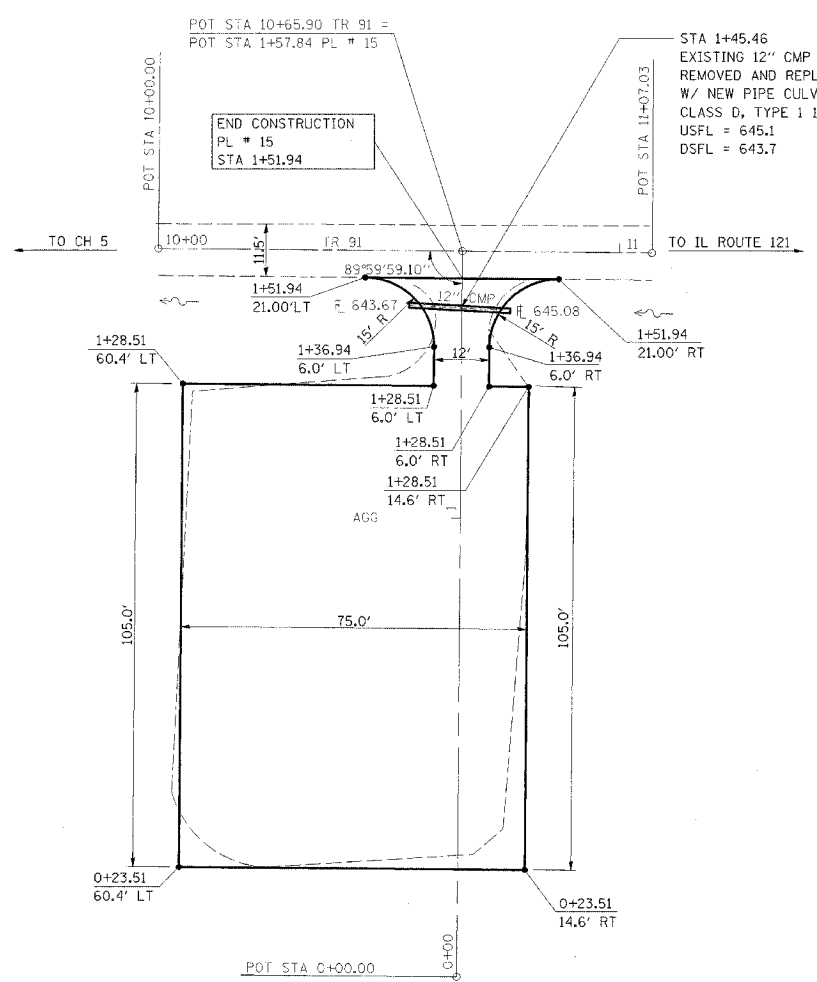
STA. TO STA.

- * PARK ROADS
- ** SFWA PARK ROADS 2003-1
- *** MOULTRIE AND SHELBY



PARKING LOT 19

NOTE:
PARKING LOT 19
BEGIN STA 10+00.00
SURFACE IMPROVEMENTS,
ADD 3" AGGREGATE



PARKING LOT 15

NOTE:
PARKING LOT 15
END STA 1+51.94
SURFACE IMPROVEMENTS,
ADD 3" AGGREGATE



| REVISIONS | |
|-----------|------------|
| NAME | DATE |
| FGI | 11/23/2005 |
| | |
| | |
| | |
| | |
| | |
| | |
| | |
| | |

ILLINOIS DEPARTMENT OF TRANSPORTATION
WEST OKAW FISH & WILDLIFE UNIT
PARKING LOT PLAN
PL 19 & PL 15

SCALE: _____
DATE _____

DRAWN BY BANDY
CHECKED BY STELIART