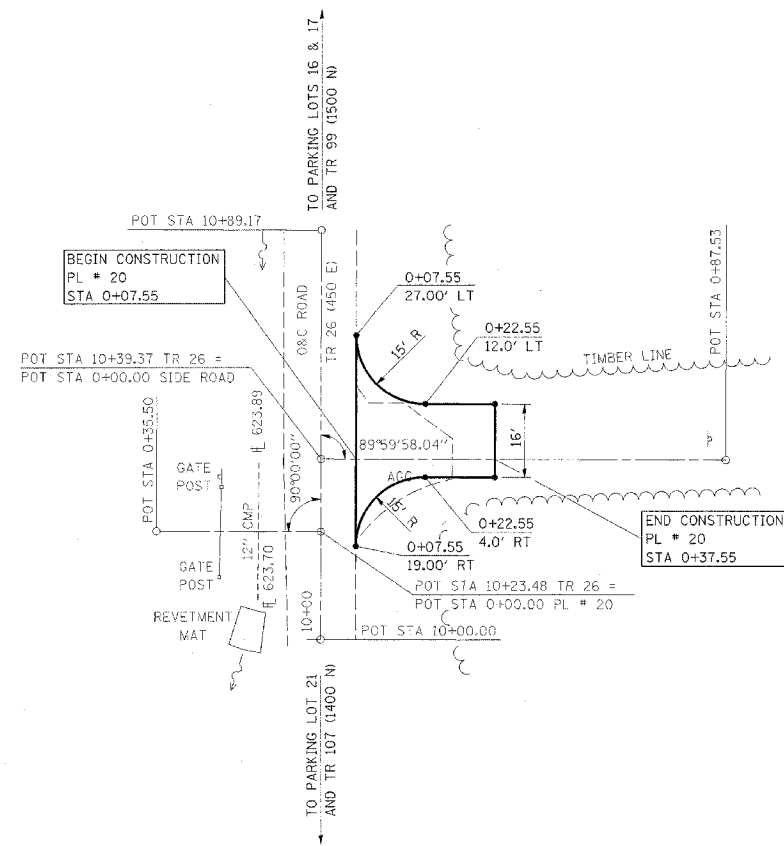


F.A. RTE.	SECTION	COUNTY	TOTAL SHEETS	SHEET NO.
*	**	***	310	97

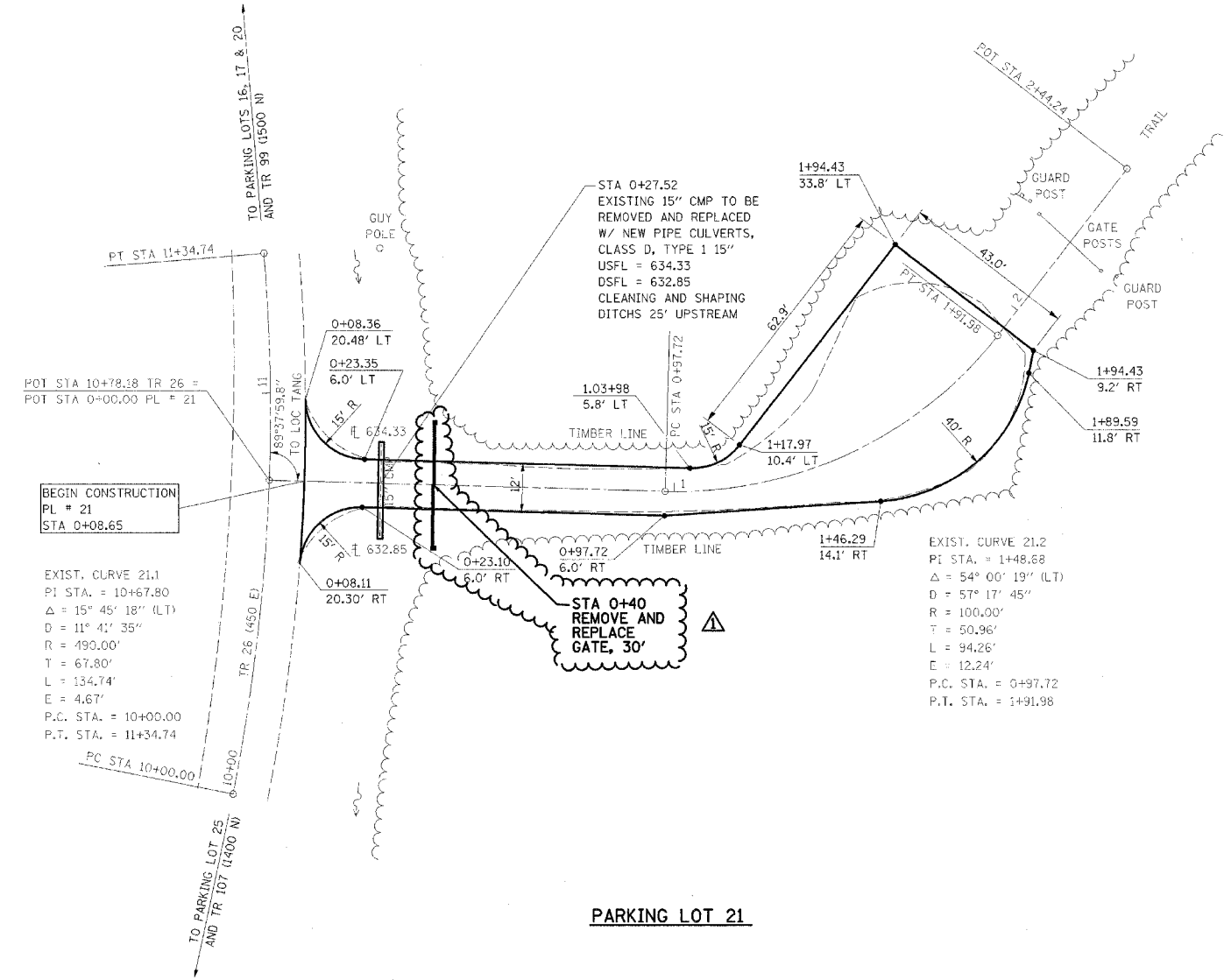
CONTRACT NO. 74155

- * PARK ROADS
- ** SFWA PARK ROADS 2003-1
- *** MOULTRIE AND SHELBY



PARKING LOT 20

NOTE:
PARKING LOT 20
STA 0+07.55 TO STA 0+37.55
SURFACE IMPROVEMENTS,
ADD 3" AGGREGATE



PARKING LOT 21

NOTE:
PARKING LOT 21
BEGIN STA 0+08.65
SURFACE IMPROVEMENTS,
ADD 3" AGGREGATE



REVISIONS	
NAME	DATE
FGI	11/23/2005

ILLINOIS DEPARTMENT OF TRANSPORTATION
WEST OKAW FISH & WILDLIFE UNIT
PARKING LOT PLAN
PL 20 & PL 21

SCALE: _____
DATE _____

DRAWN BY BANDY
CHECKED BY STEUART