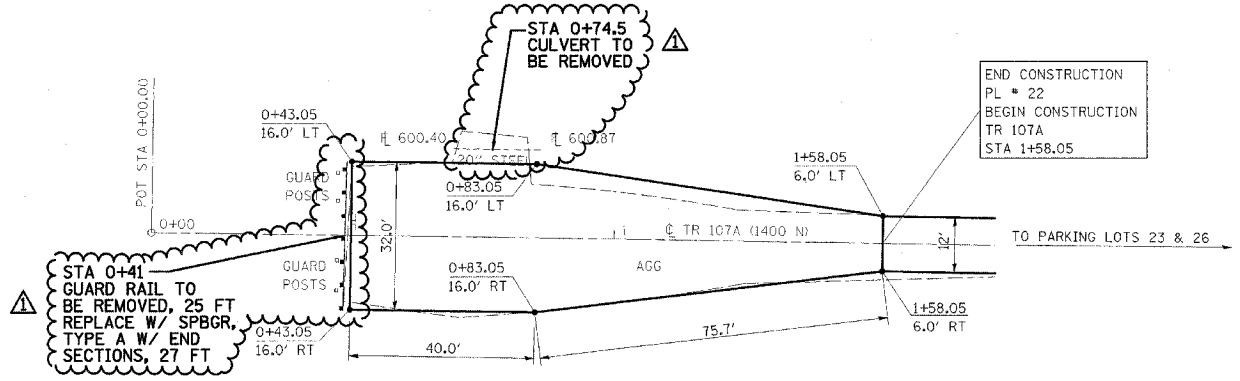


F.A. RTE.	SECTION	COUNTY	TOTAL SHEETS	SHEET NO.
*	**	***	310	98

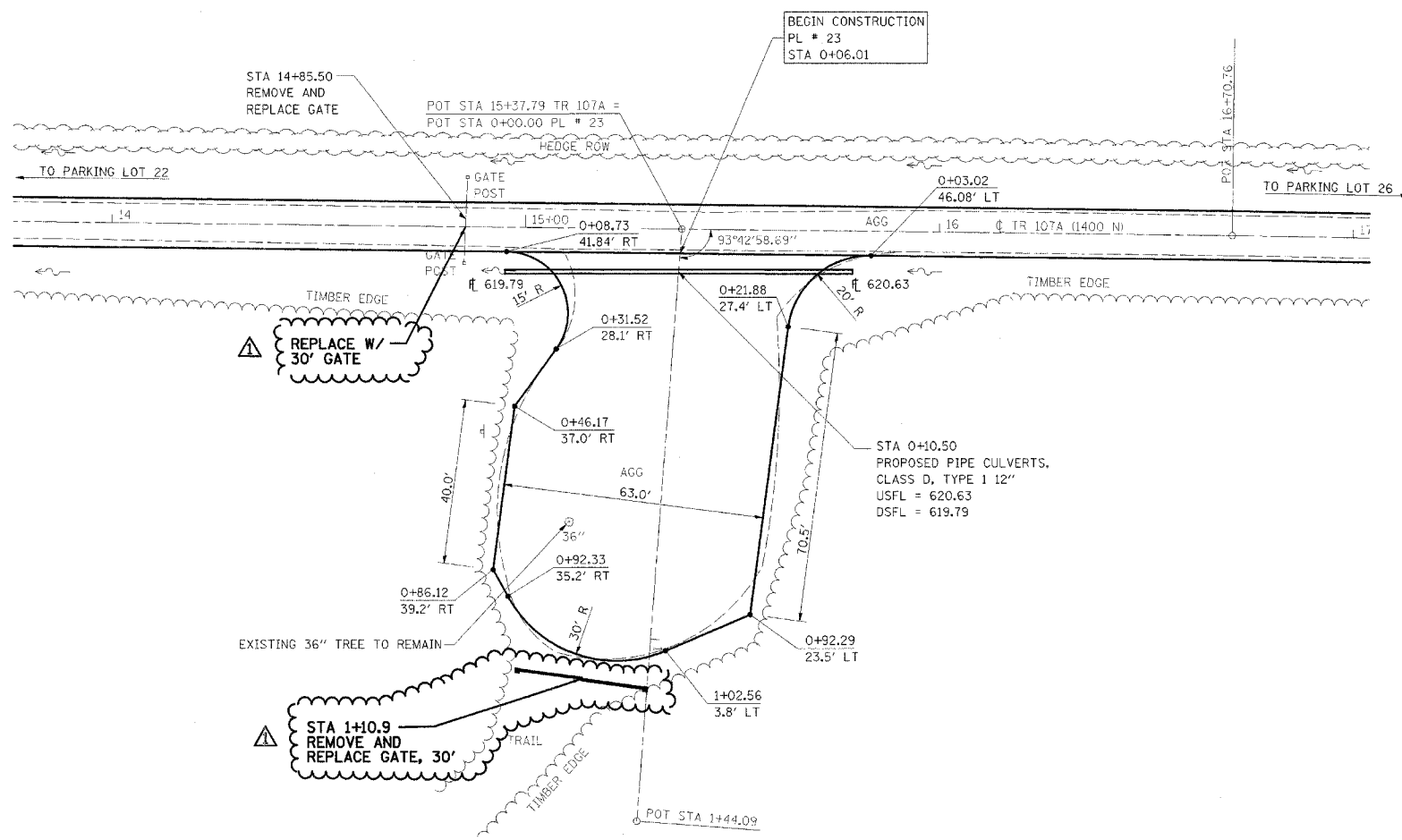
CONTRACT NO. 74155

- * PARK ROADS
- ** SFWA PARK ROADS 2003-1
- *** MOULTRIE AND SHELBY



PARKING LOT 22

NOTE:
 PARKING LOT 22
 END STA 1+58.08
 SURFACE IMPROVEMENTS,
 ADD 3" AGGREGATE



PARKING LOT 23

NOTE:
 PARKING LOT 23
 BEGIN STA 0+06.01
 SURFACE IMPROVEMENTS,
 ADD 3" AGGREGATE



REVISIONS	
NAME	DATE
FGI	11/23/2005

ILLINOIS DEPARTMENT OF TRANSPORTATION
 WEST OKAW FISH & WILDLIFE UNIT
 PARKING LOT PLAN
 PL 22 & PL 23

SCALE: _____ DRAWN BY BANDY
 DATE _____ CHECKED BY STEUART