

F.A. RTE.	SECTION	COUNTY	TOTAL SHEETS	SHEET NO.
•	••	•••	310	99

CONTRACT NO. 74155

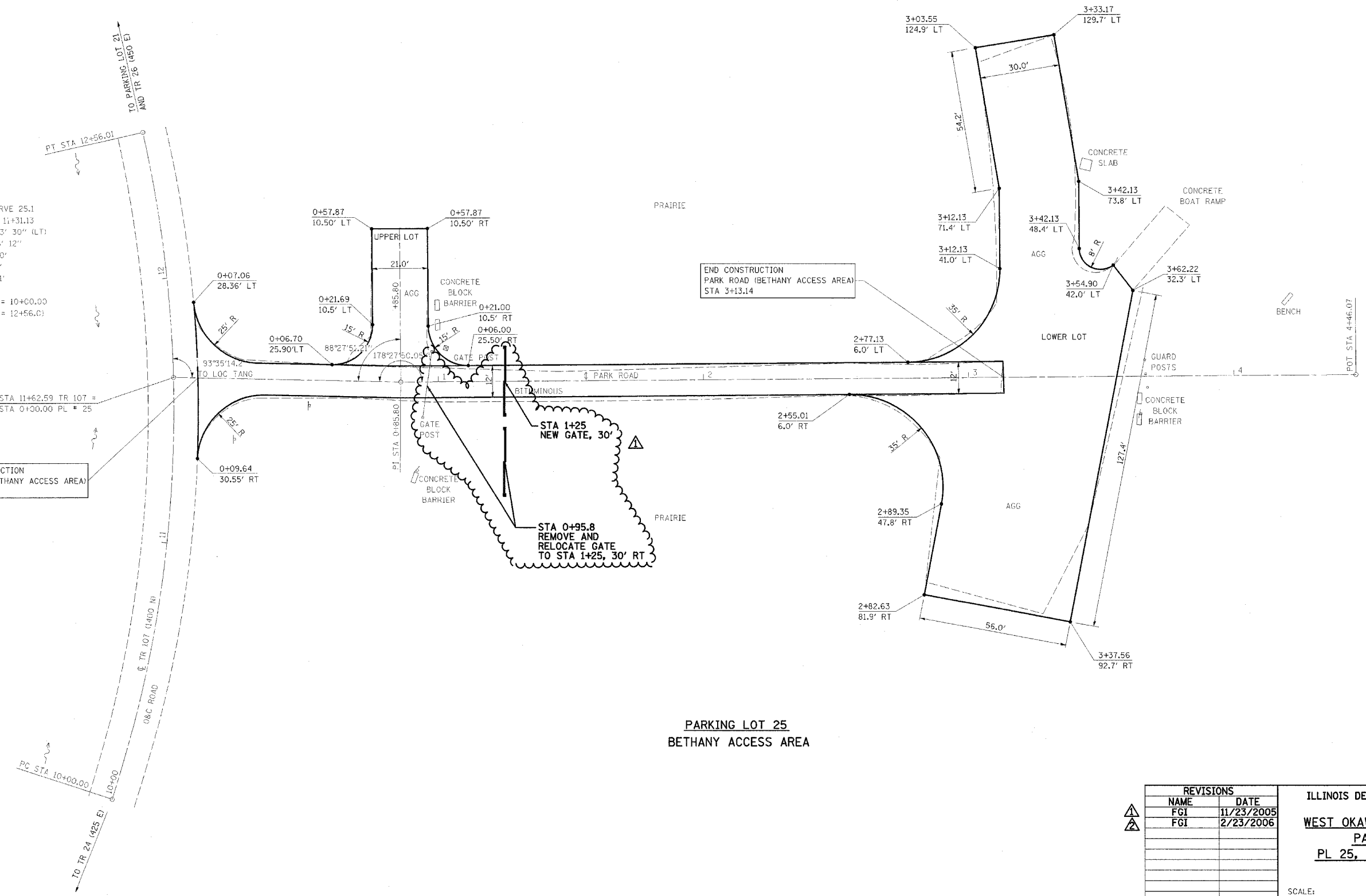
- PARK ROADS
- SFWA PARK ROADS 2003-1
- MOULTRIE AND SHELBY



EXIST. CURVE 25.1
 PI STA. = 11+31.13
 $\Delta = 30^\circ 33' 30''$ (LT)
 $D = 11^\circ 56' 12''$
 $R = 480.00'$
 $T = 131.13'$
 $L = 256.01'$
 $E = 17.59'$
 P.C. STA. = 10+00.00
 P.T. STA. = 12+56.01

BEGIN CONSTRUCTION
 PARK ROAD (BETHANY ACCESS AREA)
 STA 0+09.21

END CONSTRUCTION
 PARK ROAD (BETHANY ACCESS AREA)
 STA 3+13.14



PARKING LOT 25
 BETHANY ACCESS AREA

NOTE:
 PARKING LOT 25
 BEGIN STA 3+13.14
 SURFACE IMPROVEMENTS,
 ADD 3" AGGREGATE

REVISIONS	
NAME	DATE
FGI	11/23/2005
FGI	2/23/2006

ILLINOIS DEPARTMENT OF TRANSPORTATION
 WEST OKAW FISH & WILDLIFE UNIT
 PARKING LOT PLAN
 PL 25, BETHANY ACCESS AREA

SCALE: _____
 DATE _____
 DRAWN BY BANDY
 CHECKED BY STEUART