

F.A. RTE.	SECTION	COUNTY	TOTAL SHEETS	SHEET NO.
*	**	***	310	100

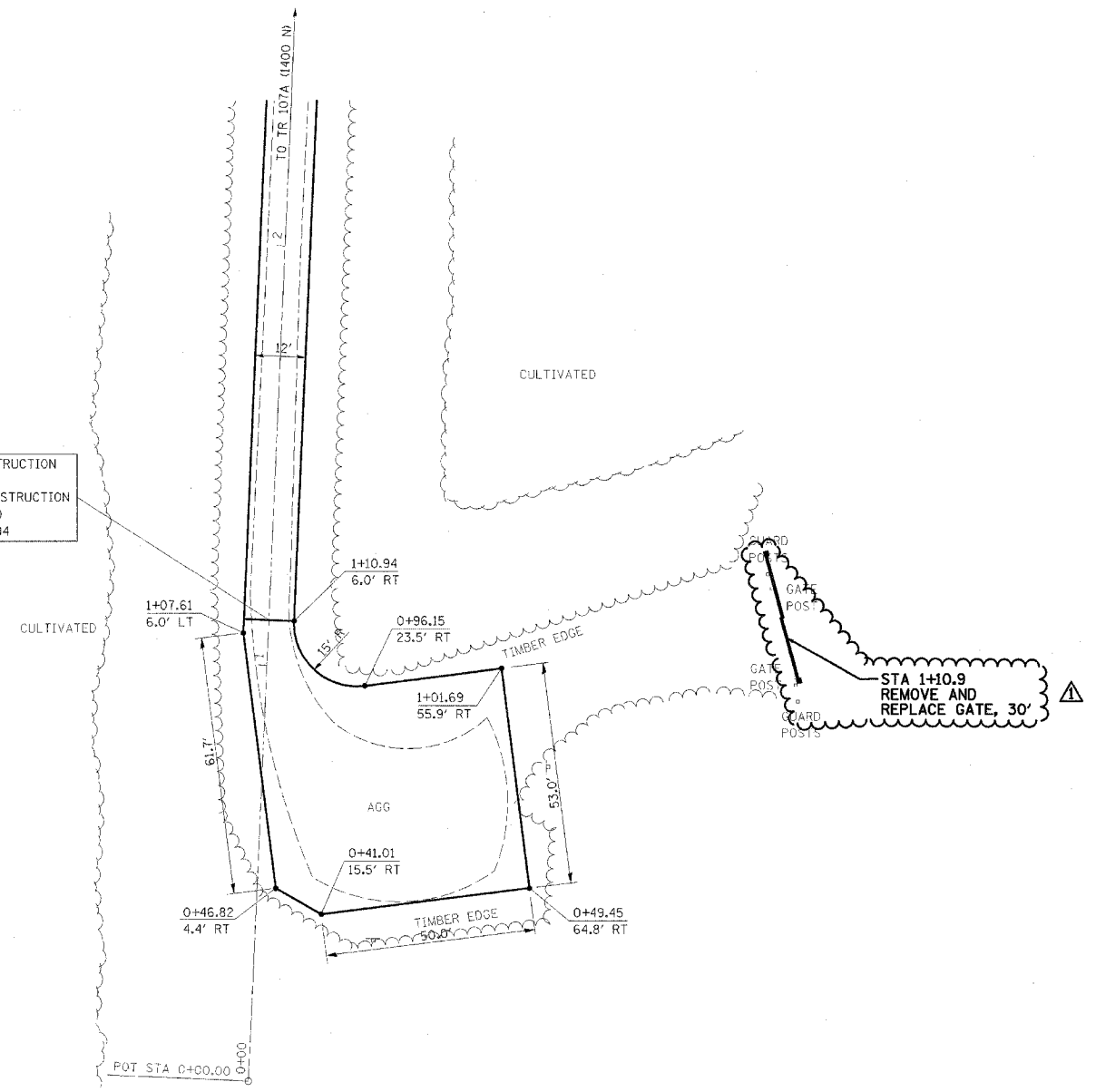
STA. TO STA.

CONTRACT NO. 74155

- \* PARK ROADS
- \*\* SFWA PARK ROADS 2003-1
- \*\*\* MOULTRIE AND SHELBY

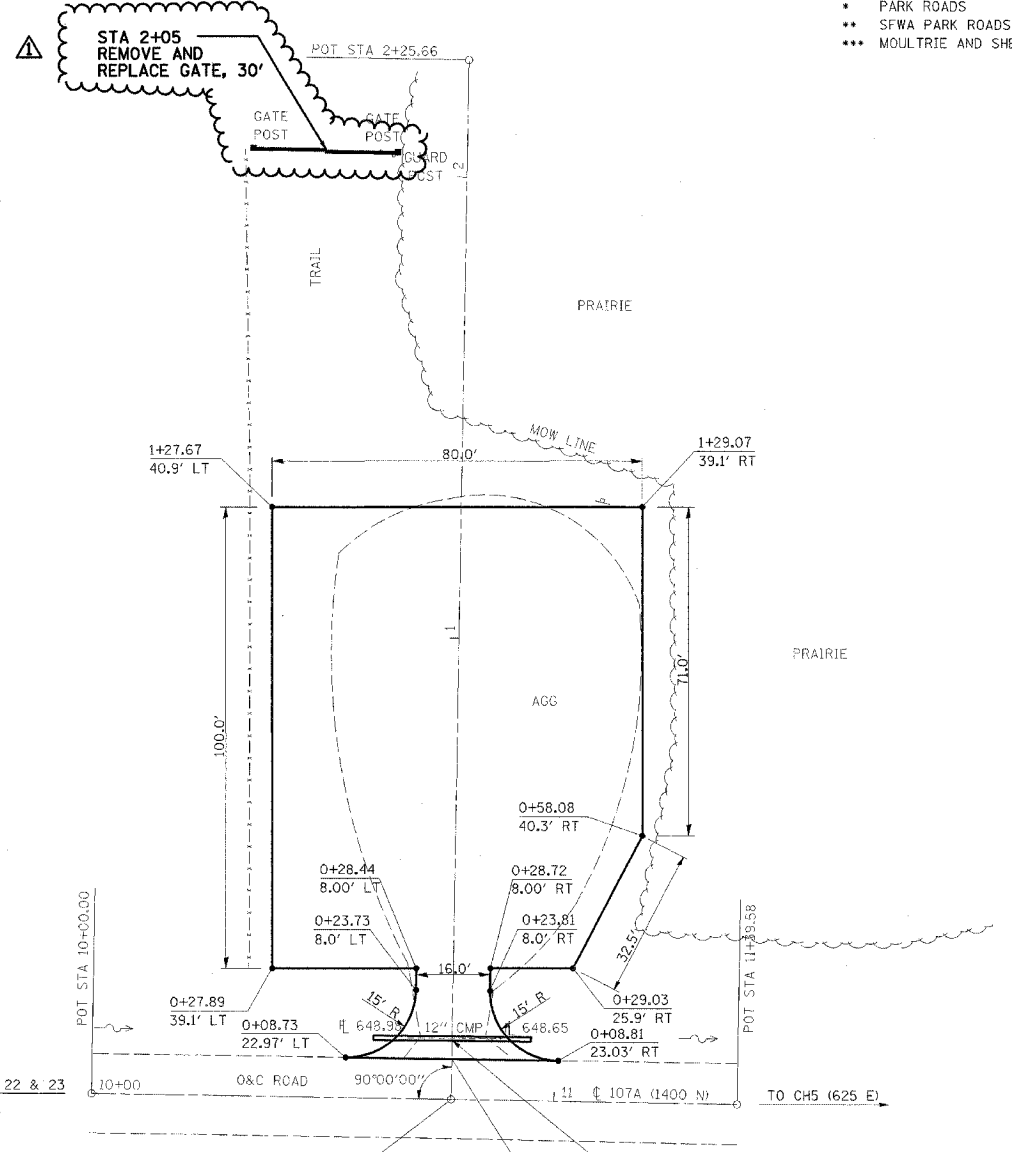


END CONSTRUCTION  
PL # 26  
BEGIN CONSTRUCTION  
PARK ROAD  
STA 1+10.94



**PARKING LOT 26**

NOTE:  
PARKING LOT 26  
END STA 1+10.94  
SURFACE IMPROVEMENTS,  
ADD 3" AGGREGATE

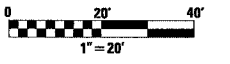


**PARKING LOT 24**

NOTE:  
PARKING LOT 24  
BEGIN STA 0+08.77  
SURFACE IMPROVEMENTS,  
ADD 3" AGGREGATE

BEGIN CONSTRUCTION  
PL # 24  
STA 0+08.77

STA 0+13.30  
EXISTING 12" CMP TO BE  
REMOVED AND REPLACED  
W/ NEW PIPE CULVERTS  
CLASS D, TYPE I 12"  
USFL = 648.0  
DSFL = 648.6  
CLEANING AND SHAPING DITCHES  
25' UPSTREAM AND DOWNSTREAM



REVISIONS	
NAME	DATE
FGI	11/23/2005

ILLINOIS DEPARTMENT OF TRANSPORTATION  
**WEST OKAW FISH & WILDLIFE UNIT**  
**PARKING LOT PLAN**  
**PL 26 & PL 24**

SCALE: \_\_\_\_\_ DRAWN BY BANDY  
DATE \_\_\_\_\_ CHECKED BY STEUART