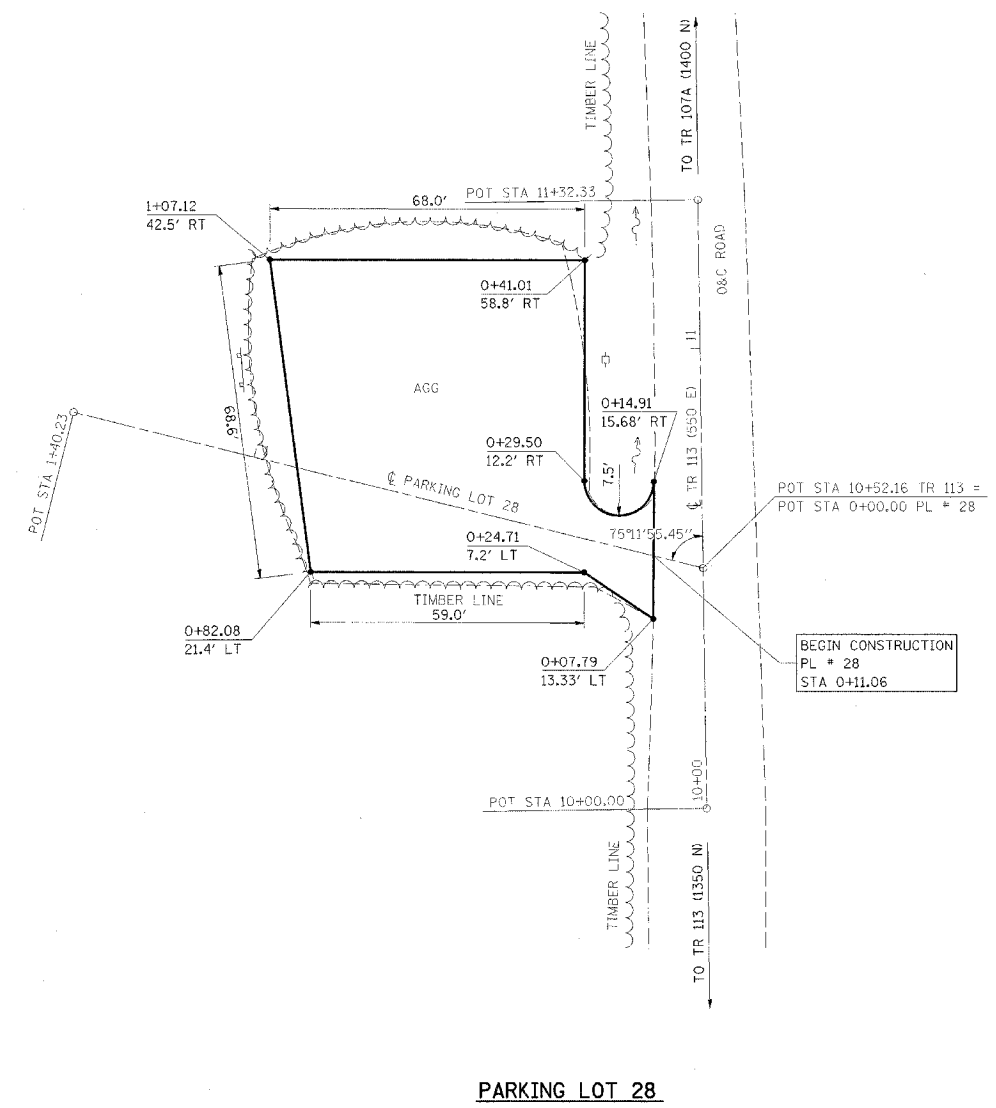
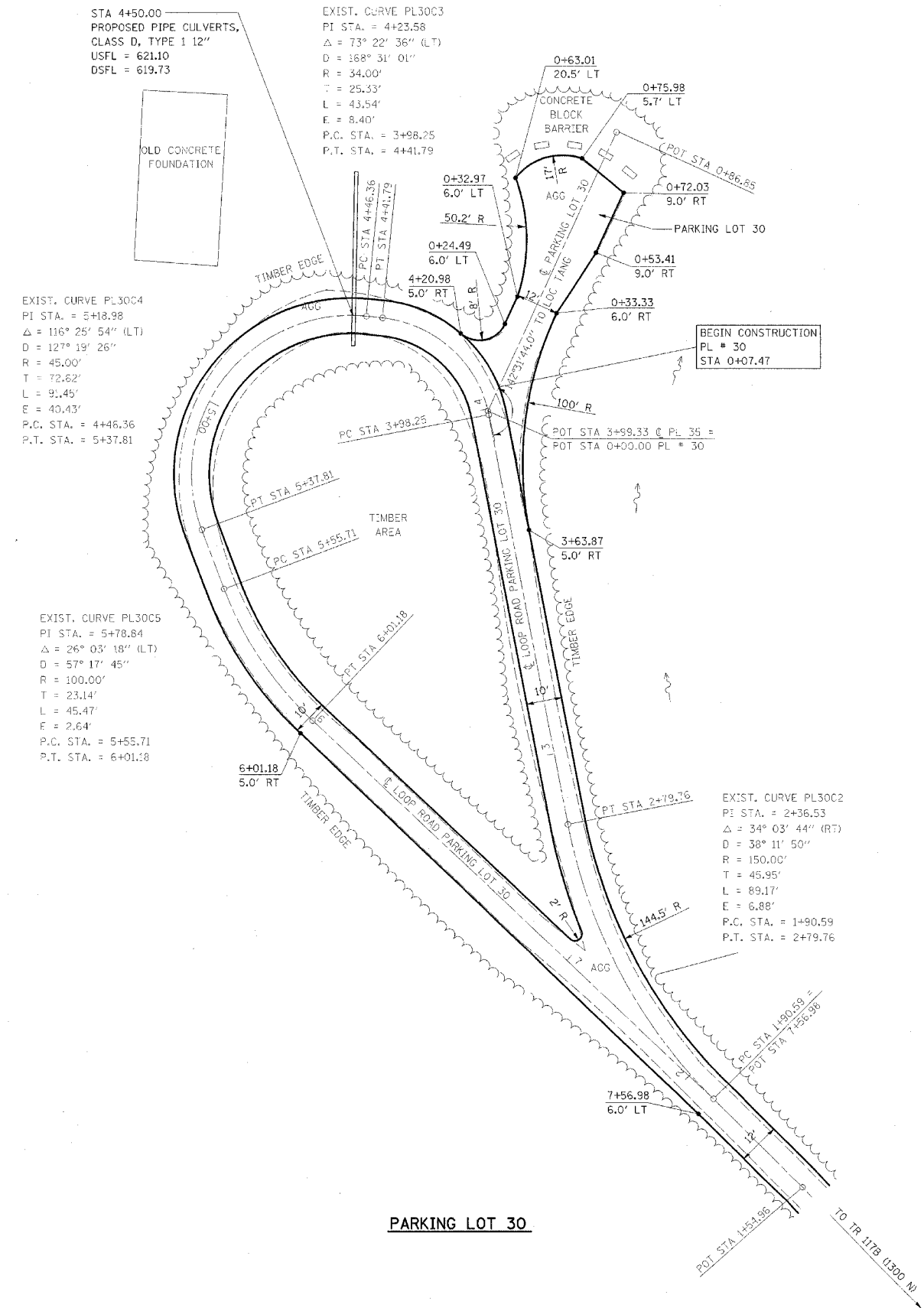


F.A. RTE.	SECTION	COUNTY	TOTAL SHEETS	SHEET NO.
*	**	***	310	102

CONTRACT NO. 74155

• PARK ROADS
 •• SFWA PARK ROADS 2003-1
 ••• MOULTRIE AND SHELBY



NOTE:
 PARKING LOT 30
 BEGIN STA 0+07.47
 SURFACE IMPROVEMENTS,
 ADD 3" AGGREGATE

NOTE:
 PARKING LOT 28
 BEGIN STA 0+11.06
 SURFACE IMPROVEMENTS,
 ADD 3" AGGREGATE

REVISIONS		ILLINOIS DEPARTMENT OF TRANSPORTATION WEST OKAW FISH & WILDLIFE UNIT PARKING LOT PLAN PL 30 & PL 28
NAME	DATE	

SCALE: _____ DATE _____ DRAWN BY BANDY CHECKED BY STEUART