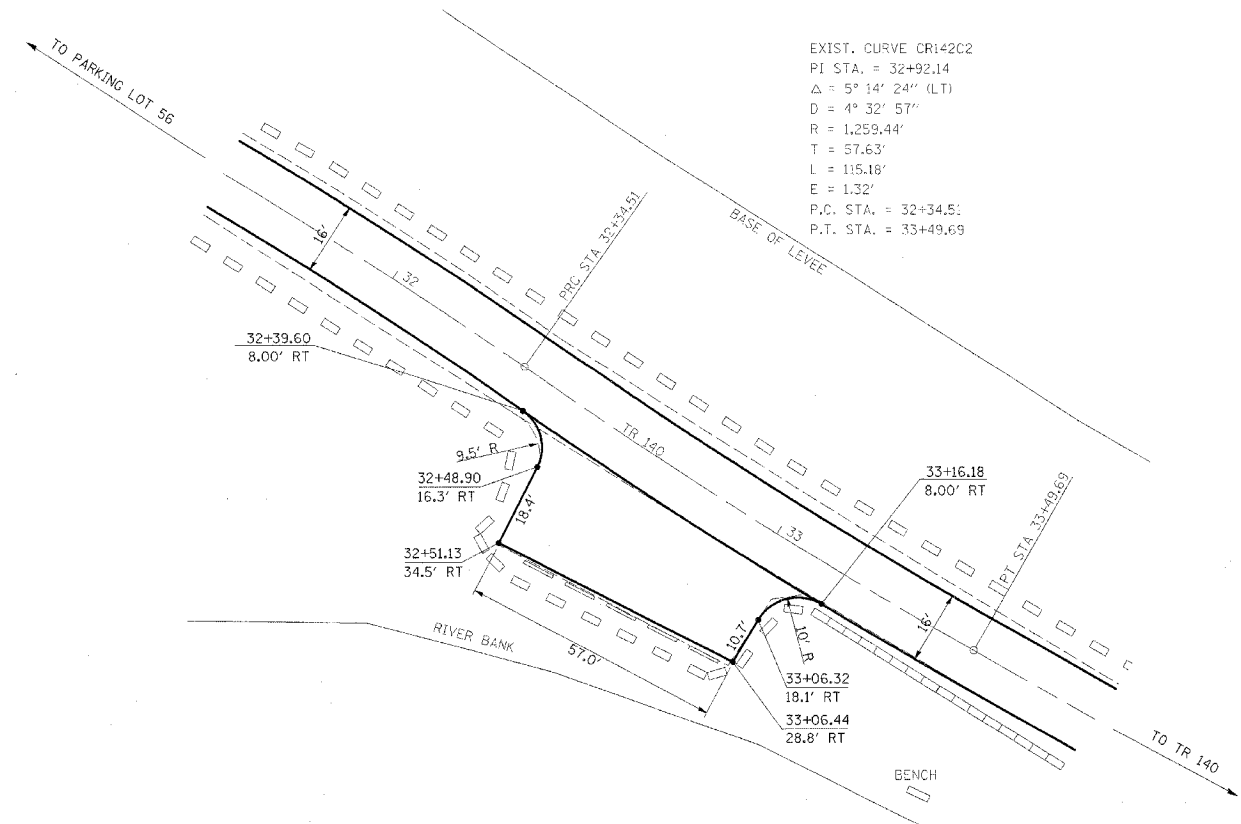


| F.A. RTE. | SECTION | COUNTY | TOTAL SHEETS | SHEET NO. |
|-----------|---------|--------|--------------|-----------|
| * | ** | *** | 310 | 106 |

STA. TO STA.
CONTRACT NO. 74155

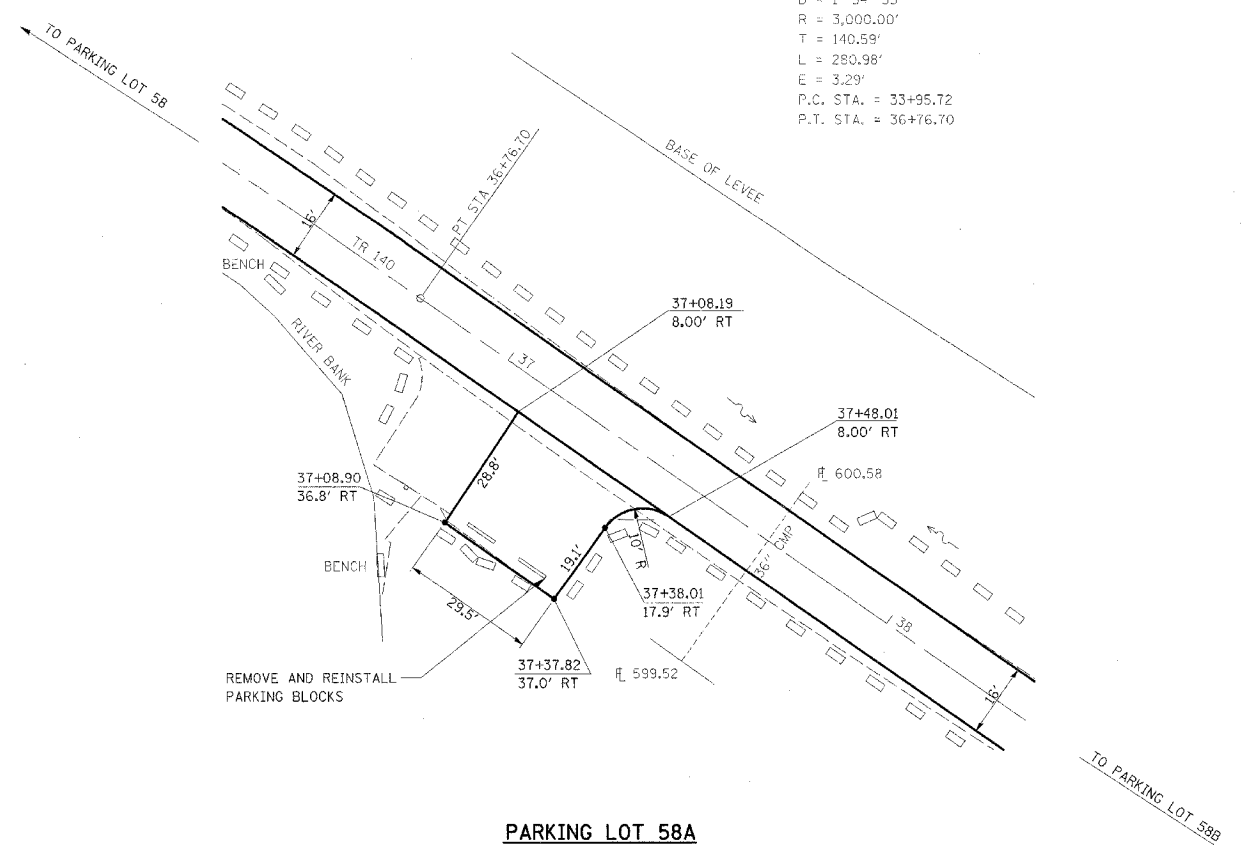
- PARK ROADS
- SFWA PARK ROADS 2003-1
- MOULTRIE AND SHELBY



EXIST. CURVE CR142C2
 PI STA. = 32+92.14
 $\Delta = 5^\circ 14' 24''$ (LT)
 $D = 4^\circ 32' 57''$
 $R = 1,259.44'$
 $T = 57.63'$
 $L = 115.18'$
 $E = 1.32'$
 P.C. STA. = 32+34.51
 P.T. STA. = 33+49.69

PARKING LOT 58

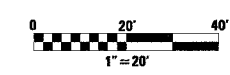
NOTE:
 PARKING LOT 58
 SURFACE IMPROVEMENTS,
 ADD 3" AGGREGATE



EXIST. CURVE CR142C1
 PI STA. = 35+36.31
 $\Delta = 5^\circ 2' 59''$ (RT)
 $D = 1^\circ 54' 35''$
 $R = 3,000.00'$
 $T = 140.59'$
 $L = 280.98'$
 $E = 3.29'$
 P.C. STA. = 33+95.72
 P.T. STA. = 36+76.70

PARKING LOT 58A

NOTE:
 PARKING LOT 58A
 SURFACE IMPROVEMENTS,
 ADD 3" AGGREGATE



| REVISIONS | |
|-----------|------|
| NAME | DATE |
| | |
| | |
| | |
| | |
| | |
| | |
| | |
| | |
| | |
| | |

ILLINOIS DEPARTMENT OF TRANSPORTATION
KASKASKIA FISH & WILDLIFE UNIT
PARKING LOT PLAN
PARKING LOT 58 & 58a
 SCALE: _____
 DATE _____
 DRAWN BY BANDY
 CHECKED BY STEUART