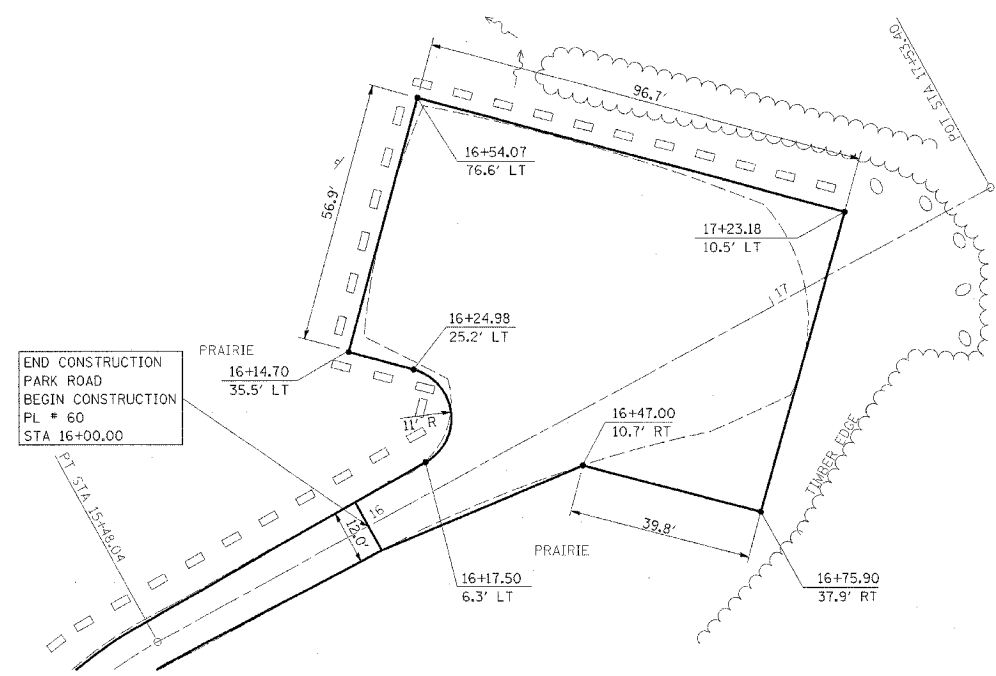


F.A. RTE.	SECTION	COUNTY	TOTAL SHEETS	SHEET NO.
.	**	***	310	109

STA. TO STA.
CONTRACT NO. 74155

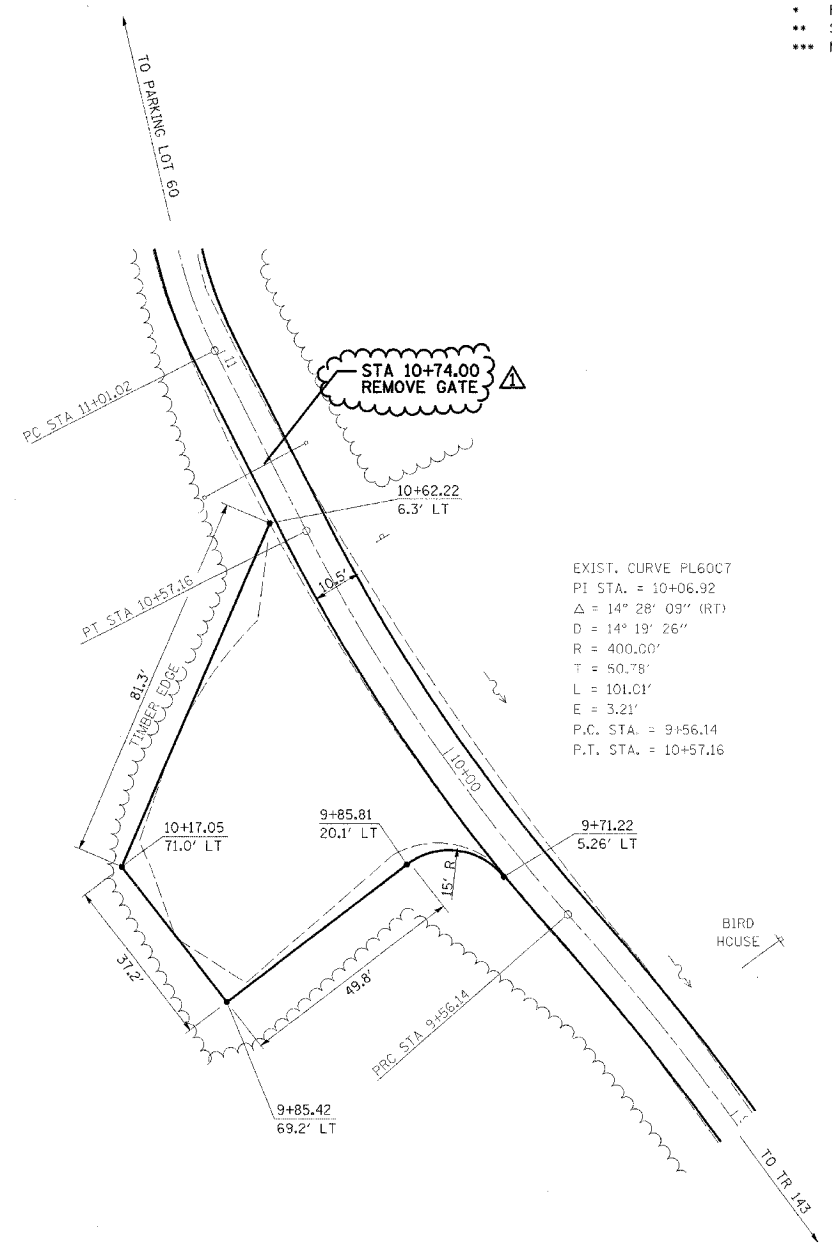
- PARK ROADS
- SFWA PARK ROADS 2003-1
- MOULTRIE AND SHELBY



EXIST. CURVE PL60C10
 PI STA. = 15+03.90
 $\Delta = 59^\circ 06' 29''$ (RT)
 $D = 60^\circ 18' 41''$
 $R = 95.00'$
 $T = 53.87'$
 $L = 98.00'$
 $E = 14.21'$
 P.C. STA. = 14+50.04
 P.T. STA. = 15+48.04

PARKING LOT 60

NOTE:
 PARKING LOT 60
 BEGIN STA 16+00.00
 SURFACE IMPROVEMENTS,
 ADD 3" AGGREGATE



EXIST. CURVE PL60C7
 PI STA. = 10+06.92
 $\Delta = 14^\circ 28' 09''$ (RT)
 $D = 14^\circ 19' 26''$
 $R = 400.00'$
 $T = 50.78'$
 $L = 101.01'$
 $E = 3.21'$
 P.C. STA. = 9+56.14
 P.T. STA. = 10+57.16

PARKING LOT 61

NOTE:
 PARKING LOT 61
 SURFACE IMPROVEMENTS,
 ADD 3" AGGREGATE



REVISIONS	
NAME	DATE
FGI	11/23/2005

ILLINOIS DEPARTMENT OF TRANSPORTATION
KASKASKIA FISH & WILDLIFE UNIT
PARKING LOT PLAN
PARKING LOT 60, & 61

SCALE: _____
 DATE _____
 DRAWN BY BANDY
 CHECKED BY STEUART