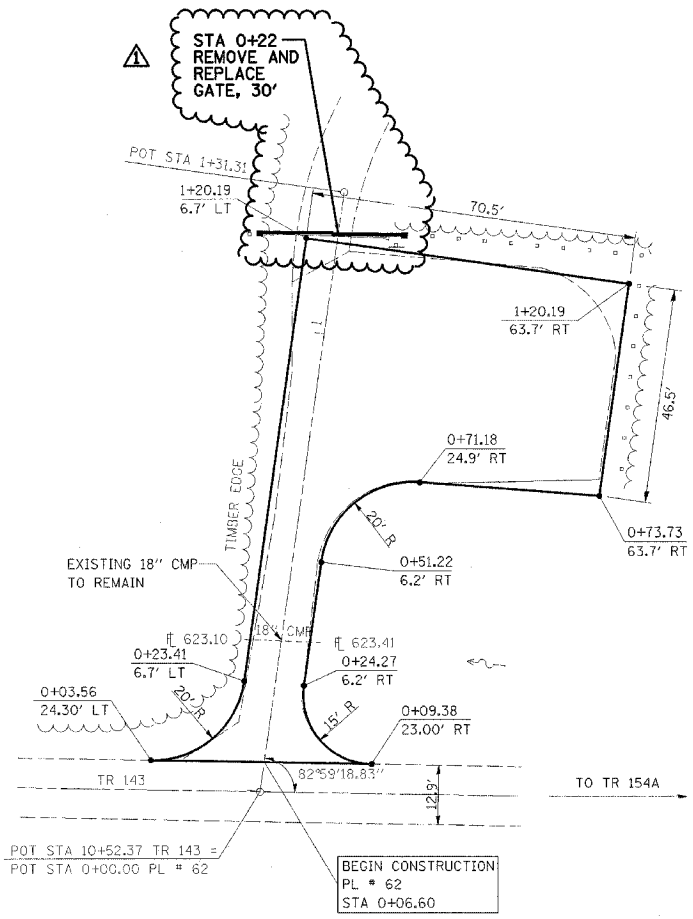


F.A. RTE.	SECTION	COUNTY	TOTAL SHEETS	SHEET NO.
*	**	***	310	110

STA. TO STA.

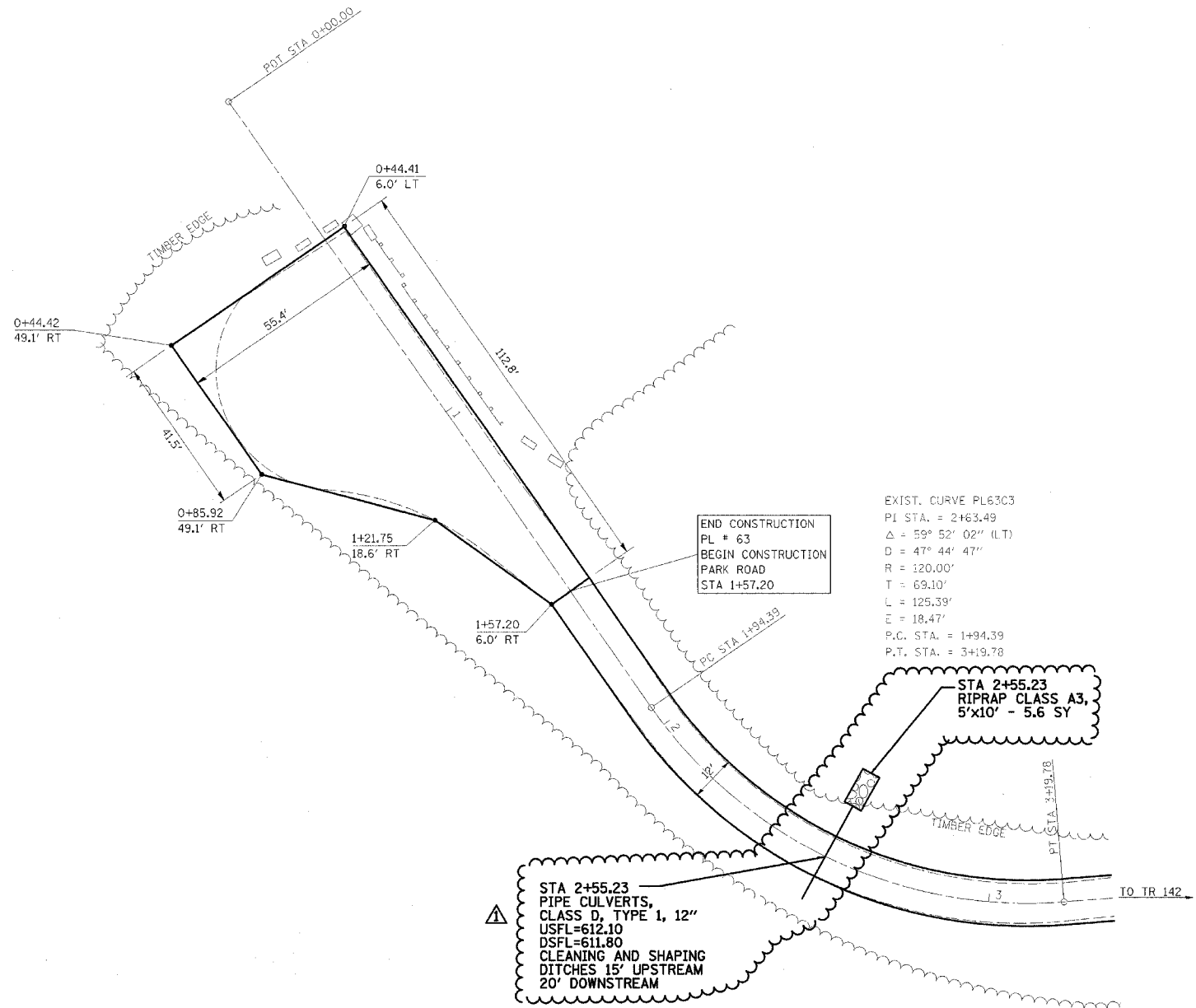
CONTRACT NO. 74155

- \* PARK ROADS
- \*\* SFWA PARK ROADS 2003-1
- \*\*\* MOULTRIE AND SHELBY



**PARKING LOT 62**

NOTE:  
 PARKING LOT 62  
 BEGIN STA 0+06.60  
 SURFACE IMPROVEMENTS,  
 ADD 3" AGGREGATE



**PARKING LOT 63**

NOTE:  
 PARKING LOT 63  
 END STA 1+57.20  
 SURFACE IMPROVEMENTS,  
 ADD 3" AGGREGATE



REVISIONS	
NAME	DATE
FGI	11/23/2005

ILLINOIS DEPARTMENT OF TRANSPORTATION  
**KASKASKIA FISH & WILDLIFE UNIT**  
**PARKING LOT PLAN**  
**PARKING LOT 62, & 63**

SCALE: DATE DRAWN BY BANDY CHECKED BY STEUART