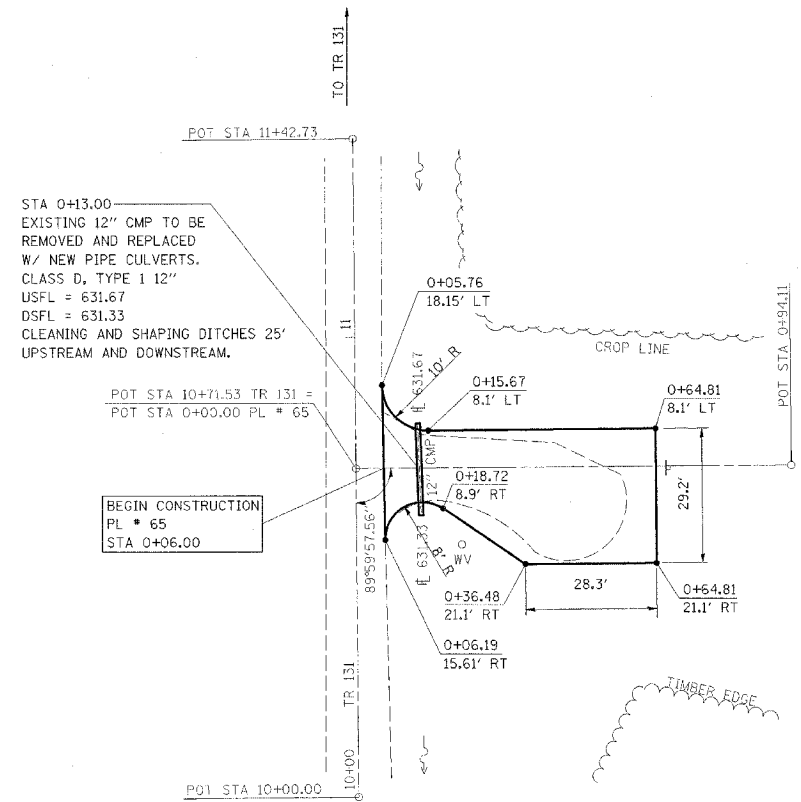


F.A. RTE.	SECTION	COUNTY	TOTAL SHEETS	SHEET NO.
*	**	***	310	112

STA. TO STA.

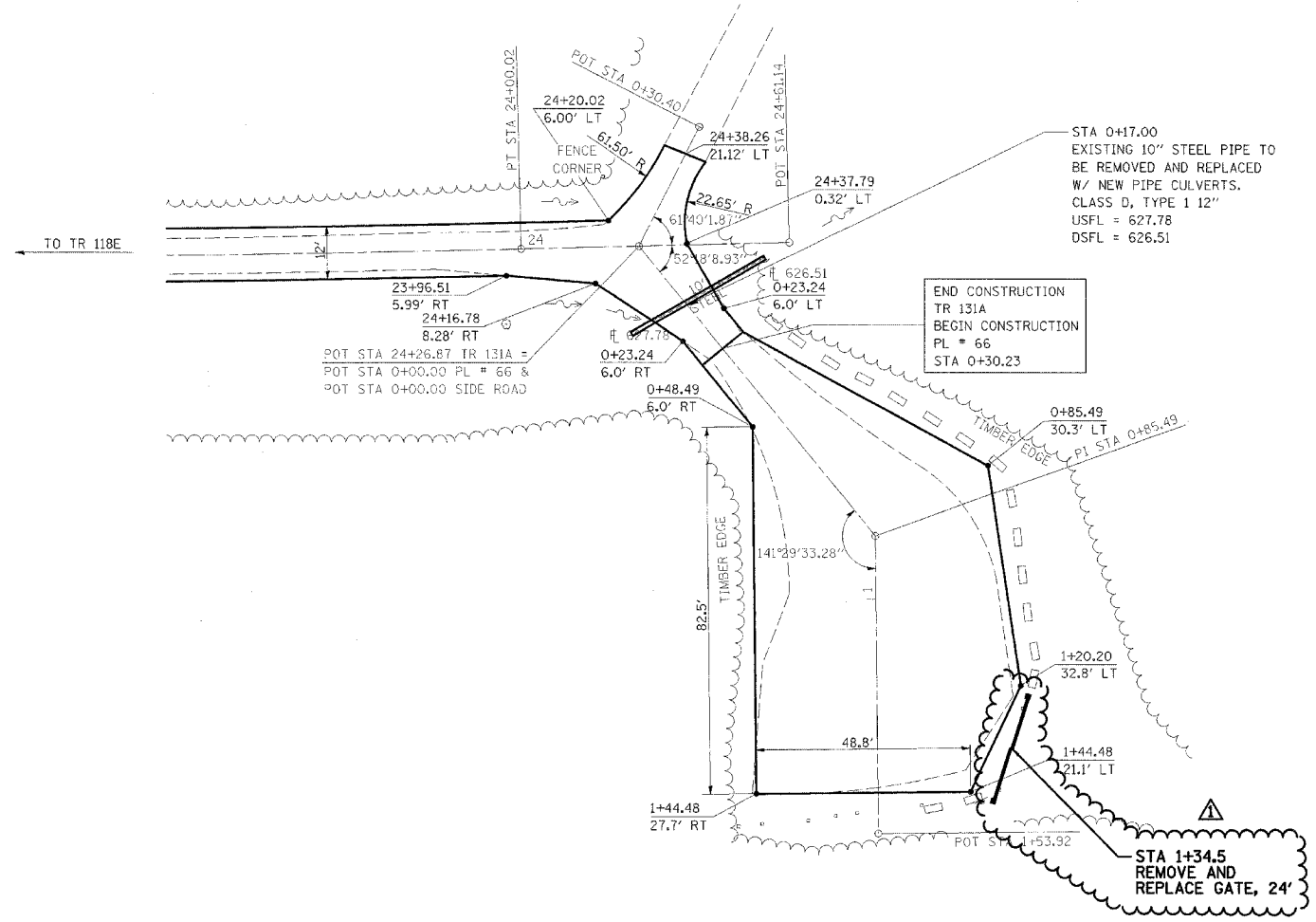
CONTRACT NO. 74155

- * PARK ROADS
- ** SFWA PARK ROADS 2003-1
- *** MOULTRIE AND SHELBY



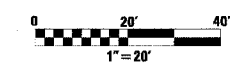
PARKING LOT 65

NOTE:
 PARKING LOT 65
 BEGIN STA 0+06.00
 SURFACE IMPROVEMENTS,
 ADD 3" AGGREGATE



PARKING LOT 66

NOTE:
 PARKING LOT 66
 BEGIN STA 0+30.23
 SURFACE IMPROVEMENTS,
 ADD 3" AGGREGATE



REVISIONS	
NAME	DATE
FGI	11/23/2005

ILLINOIS DEPARTMENT OF TRANSPORTATION
KASKASKIA FISH & WILDLIFE UNIT
PARKING LOT PLAN
PARKING LOT 65 & 66

SCALE: _____ DRAWN BY BANDY
 DATE _____ CHECKED BY STEUART