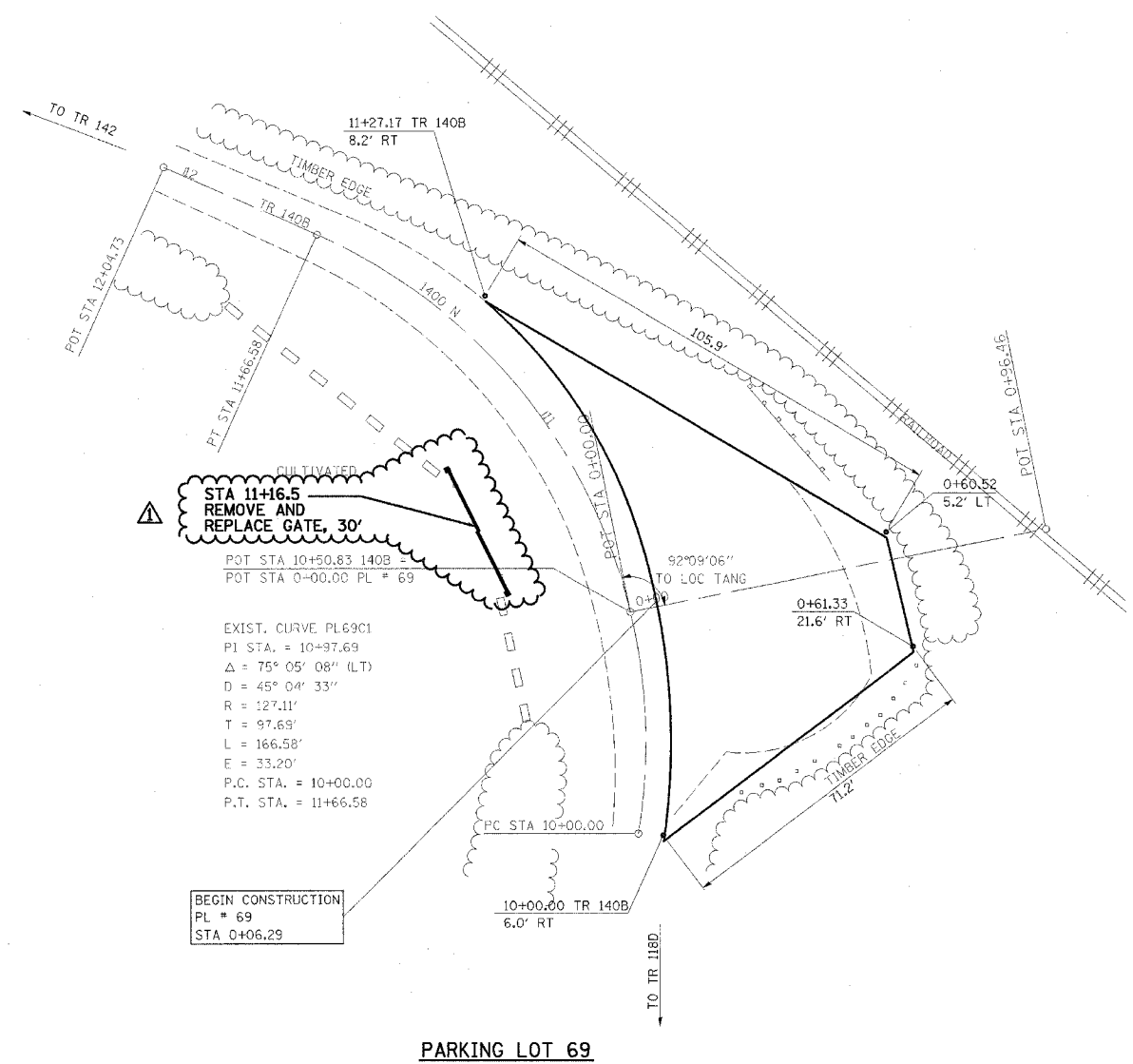


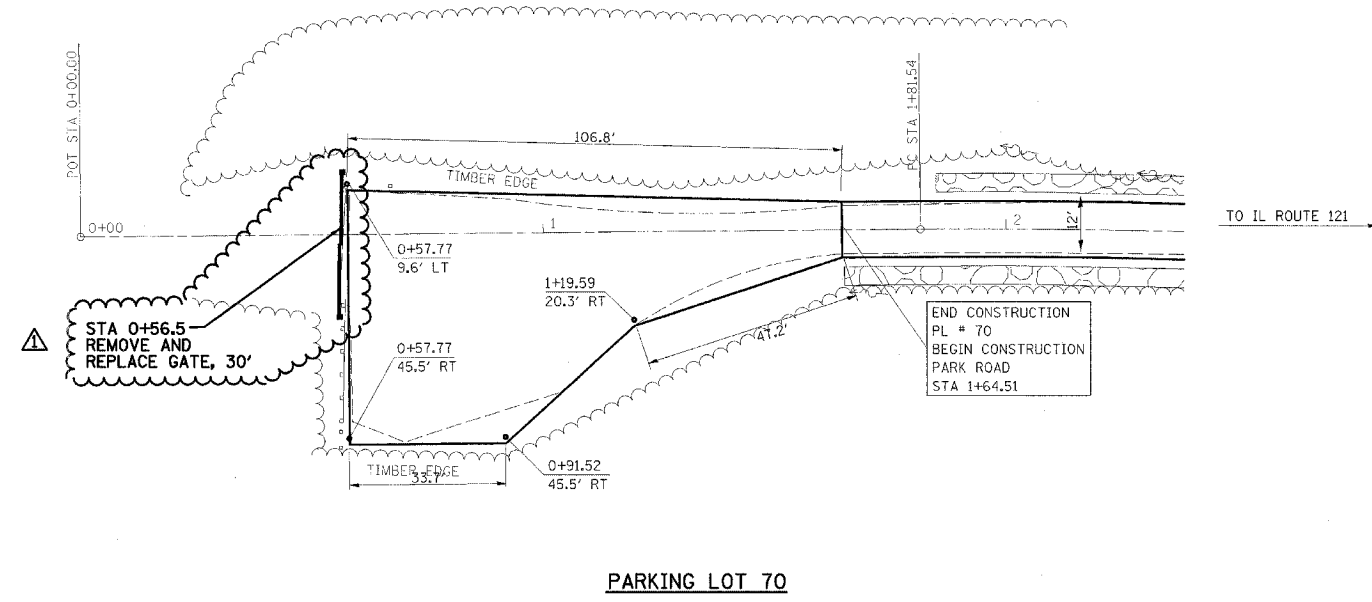
F.A. RTE.	SECTION	COUNTY	TOTAL SHEETS	SHEET NO.
*	**	***	310	114

CONTRACT NO. 74155

- * PARK ROADS
- ** SFWA PARK ROADS 2003-1
- *** MOULTRIE AND SHELBY



NOTE:
PARKING LOT 69
BEGIN STA 0+06.29
SURFACE IMPROVEMENTS,
ADD 3\"/>



NOTE:
PARKING LOT 70
END STA 1+64.51
SURFACE IMPROVEMENTS,
ADD 3\"/>



REVISIONS	
NAME	DATE
FGI	11/23/2005

ILLINOIS DEPARTMENT OF TRANSPORTATION
KASKASKIA FISH & WILDLIFE UNIT
PARKING LOT PLAN
PARKING LOT 69, & 70

SCALE: _____
DATE _____

DRAWN BY BANDY
CHECKED BY STEUART