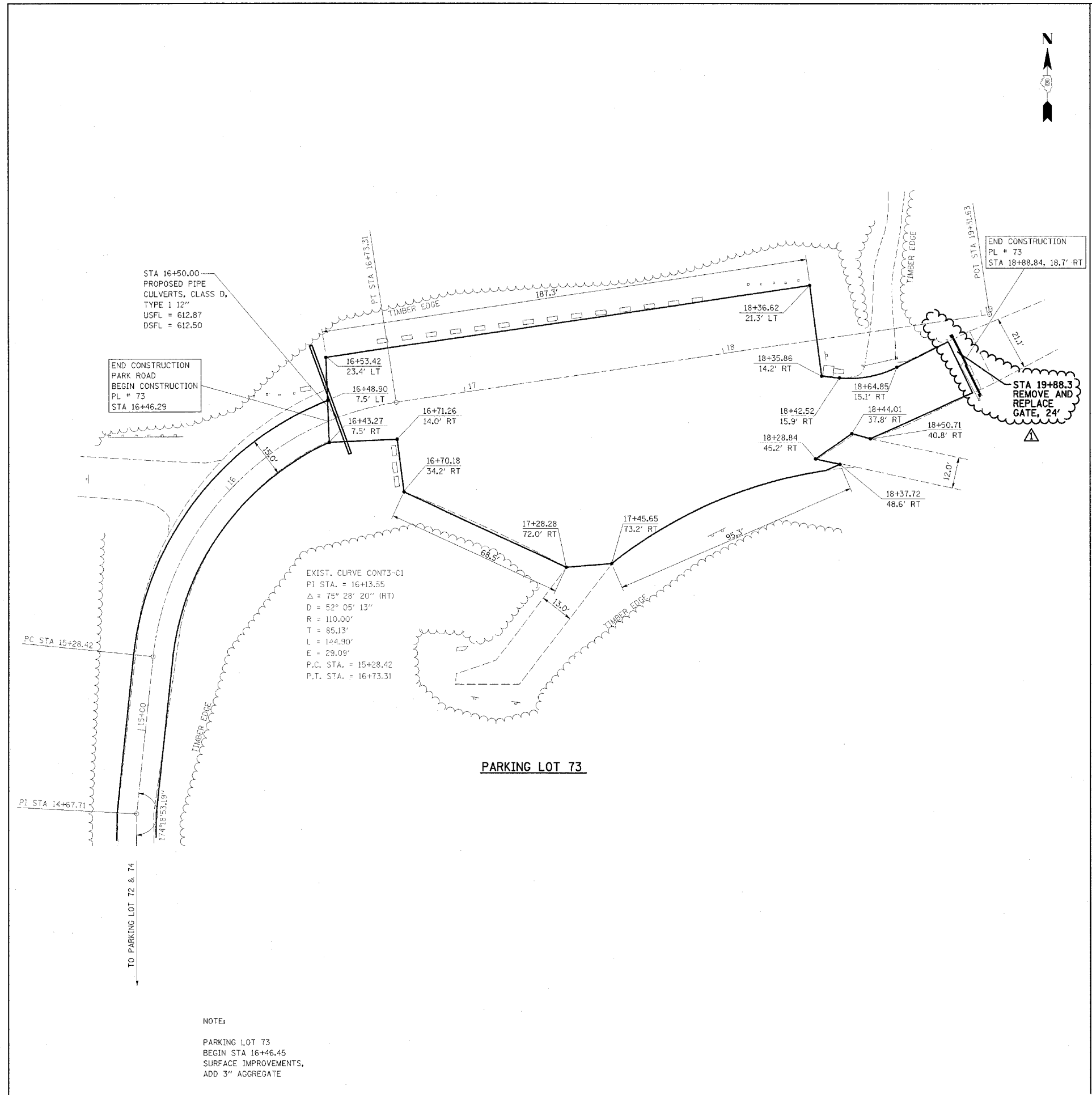
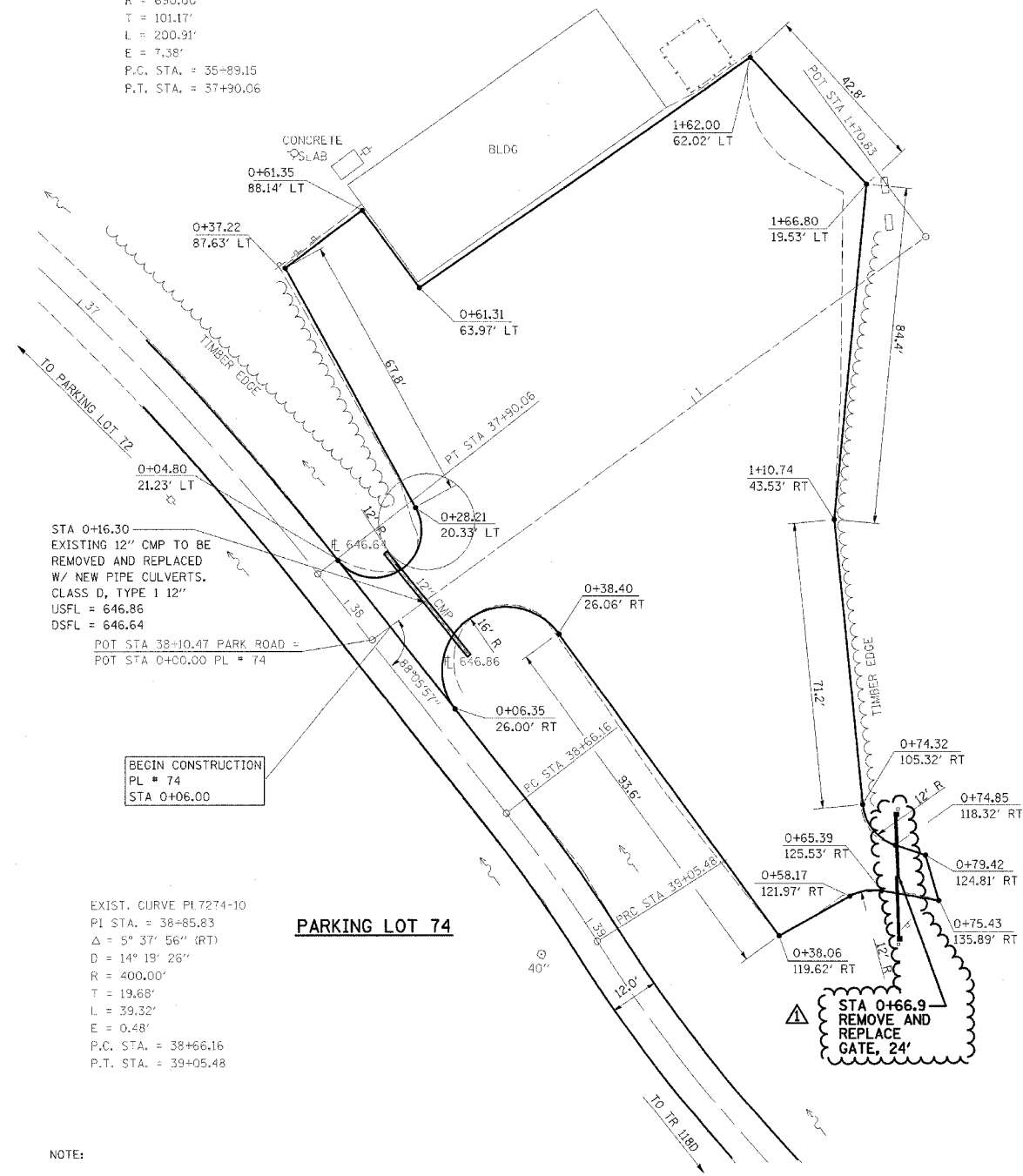


F.A. RTE.	SECTION	COUNTY	TOTAL SHEETS	SHEET NO.
*	**	***	310	116
STA. TO STA.			CONTRACT NO. 74155	
* PARK ROADS ** SFWA PARK ROADS 2003-1 *** MOULTRIE AND SHELBY				



NOTE:
 PARKING LOT 73
 BEGIN STA 16+46.45
 SURFACE IMPROVEMENTS,
 ADD 3" AGGREGATE

EXIST. CURVE PL7274-9
 PI STA. = 36+90.32
 $\Delta = 16^\circ 40' 58''$ (RT)
 D = 8° 18' 13"
 R = 690.00'
 T = 101.17'
 L = 200.91'
 E = 7.38'
 P.C. STA. = 35+89.15
 P.T. STA. = 37+90.06



STA 0+16.30
 EXISTING 12" CMP TO BE
 REMOVED AND REPLACED
 W/ NEW PIPE CULVERTS.
 CLASS D, TYPE 1 12"
 USFL = 646.86
 DSFL = 646.64
 POT STA 38+10.47 PARK ROAD =
 POT STA 0+00.00 PL # 74

BEGIN CONSTRUCTION
 PL # 74
 STA 0+06.00

EXIST. CURVE PL7274-10
 PI STA. = 38+85.83
 $\Delta = 5^\circ 37' 56''$ (RT)
 D = 14° 19' 26"
 R = 400.00'
 T = 19.68'
 L = 39.32'
 E = 0.48'
 P.C. STA. = 38+66.16
 P.T. STA. = 39+05.48

NOTE:
 PARKING LOT 74
 BEGIN STA 0+06.00
 SURFACE IMPROVEMENTS,
 ADD 3" AGGREGATE



REVISIONS		
NAME	DATE	
FGI	11/23/2005	

ILLINOIS DEPARTMENT OF TRANSPORTATION
 KASKASKIA FISH & WILDLIFE UNIT
 PARKING LOT PLAN
 PARKING LOT 73, & 74

SCALE: _____
 DATE _____
 DRAWN BY BANDY
 CHECKED BY STEUART