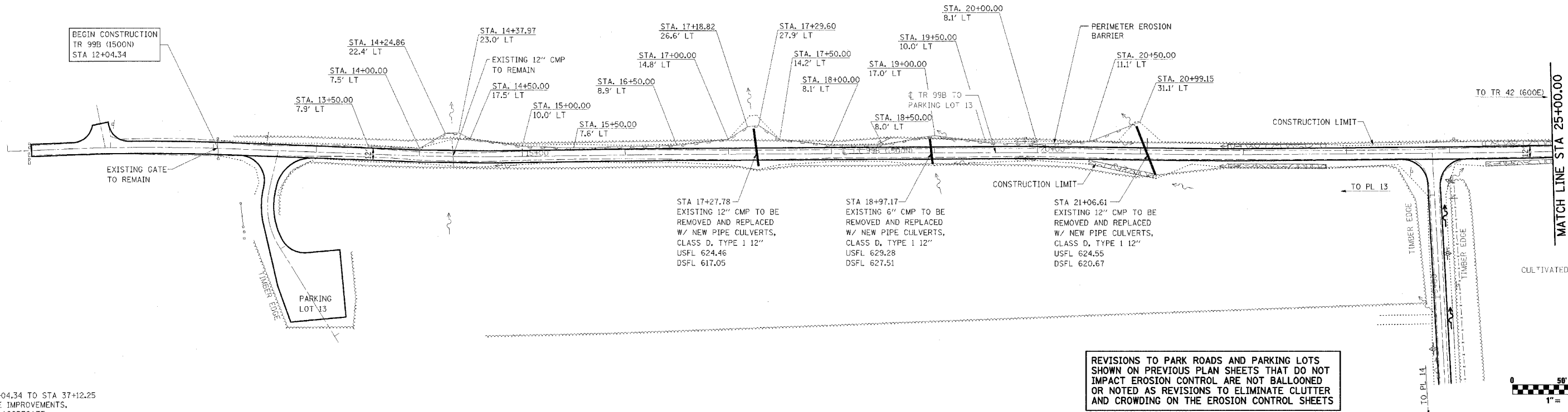
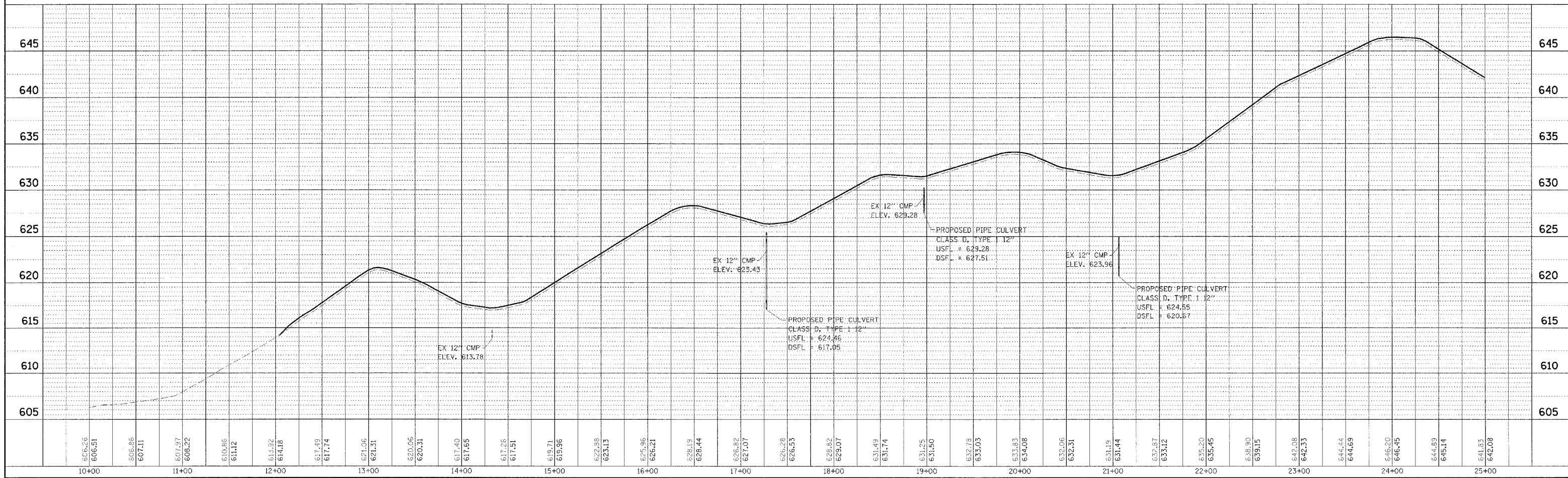


F.A. RTE.	SECTION	COUNTY	TOTAL SHEETS	SHEET NO.
*	**	***	310	125
STA. TO STA.			CONTRACT NO. 74155	
<ul style="list-style-type: none"> <li>* PARK ROADS</li> <li>** SFWA PARK ROADS 2003-1</li> <li>*** MOULTRIE AND SHELBY</li> </ul>				



NOTE:  
 TR 99B  
 STA 12+04.34 TO STA 37+12.25  
 SURFACE IMPROVEMENTS,  
 ADD 3\"/>

REVISIONS TO PARK ROADS AND PARKING LOTS SHOWN ON PREVIOUS PLAN SHEETS THAT DO NOT IMPACT EROSION CONTROL ARE NOT BALLOONED OR NOTED AS REVISIONS TO ELIMINATE CLUTTER AND CROWDING ON THE EROSION CONTROL SHEETS



WEST OKAW FISH & WILDLIFE UNIT EROSION CONTROL PLAN AND PROFILE, TR 99B TO PARKING LOT 13

PLAN	DATE	BY
SURVEYED		
PLOTTED		
NOTE BOOK		
NO.		
ADD FILE NAME		

PROFILE	DATE	BY
SURVEYED		
PLOTTED		
NOTE BOOK		
NO.		
STRUCTURE NOTATION'S CPWD		