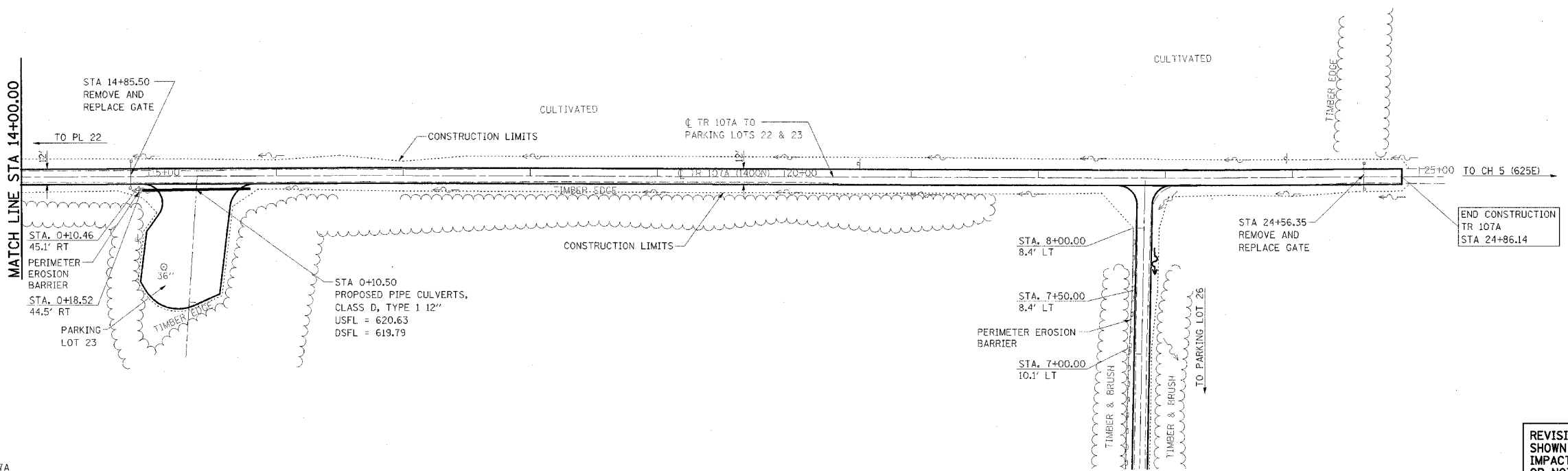


F.A. RTE.	SECTION	COUNTY	TOTAL SHEETS	SHEET NO.
*	**	***	310	131

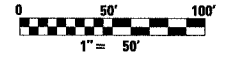
CONTRACT NO. 74155

- PARK ROADS
- \*\* SFWA PARK ROADS 2003-1
- \*\*\* MOULTRIE AND SHELBY



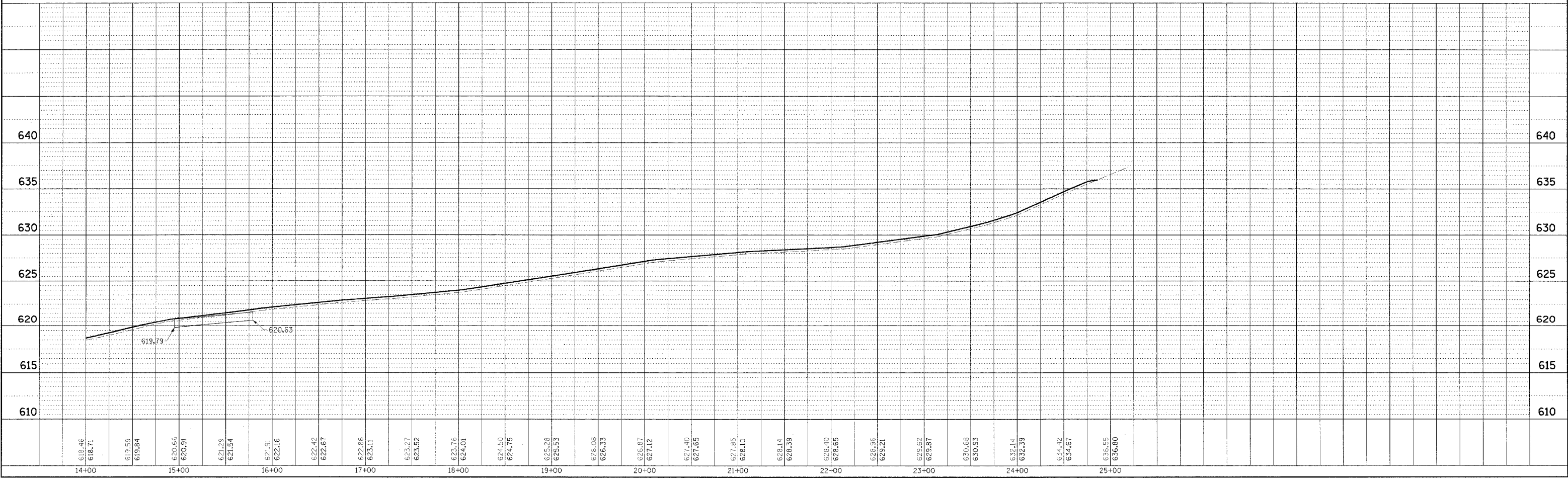
NOTE:  
TR 107A  
STA 1458.05 TO STA 24+86.14  
SURFACE IMPROVEMENTS,  
ADD 3" AGGREGATE

REVISIONS TO PARK ROADS AND PARKING LOTS SHOWN ON PREVIOUS PLAN SHEETS THAT DO NOT IMPACT EROSION CONTROL ARE NOT BALLOONED OR NOTED AS REVISIONS TO ELIMINATE CLUTTER AND CROWDING ON THE EROSION CONTROL SHEETS



DATE	BY	REVISION

DATE	BY	REVISION



WEST OKAW FISH & WILDLIFE UNIT EROSION CONTROL PLAN AND PROFILE, TR 107A TO PARKING LOTS 22 & 23