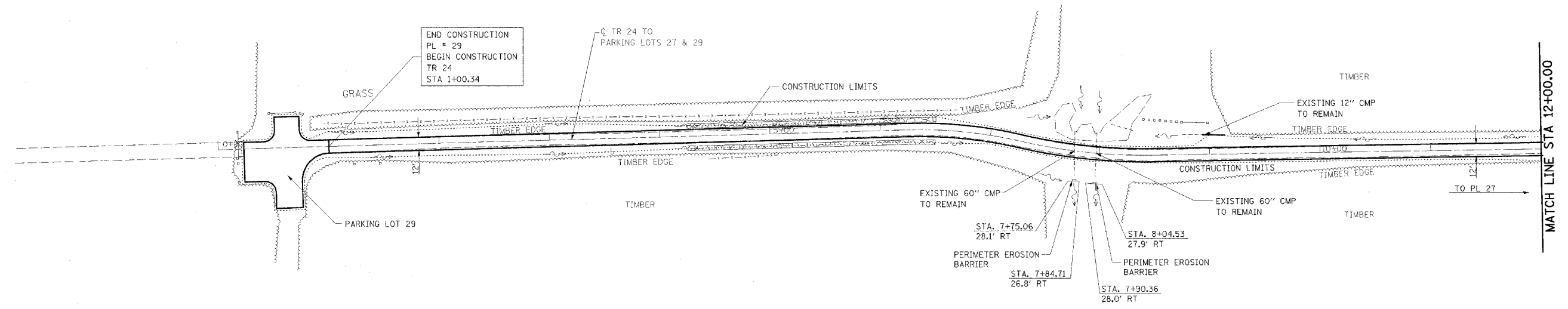


F.A. RTE.	SECTION	COUNTY	TOTAL SHEETS	SHEET NO.
*	**	***	310	134

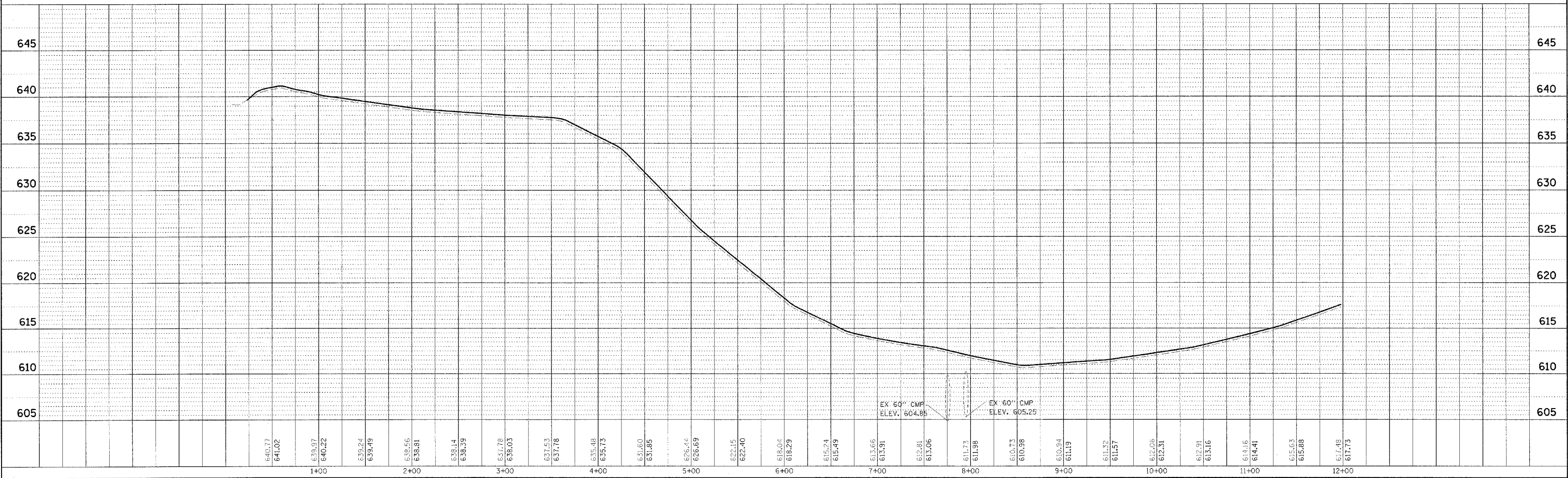
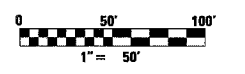
CONTRACT NO. 74155

- PARK ROADS
- \*\* SFWA PARK ROADS 2003-1
- \*\*\* MOULTRIE AND SHELBY



NOTE:  
TR 24  
STA 1+00.34 TO STA 34+54.40  
SURFACE IMPROVEMENTS,  
ADD 3" AGGREGATE

REVISIONS TO PARK ROADS AND PARKING LOTS SHOWN ON PREVIOUS PLAN SHEETS THAT DO NOT IMPACT EROSION CONTROL ARE NOT BALLOONED OR NOTED AS REVISIONS TO ELIMINATE CLUTTER AND CROWDING ON THE EROSION CONTROL SHEETS



WEST OKAW FISH & WILDLIFE UNIT EROSION CONTROL PLAN AND PROFILE, TR 24 TO PARKING LOTS 27 & 29

DATE	BY

PLAN

REVISIONS

NO. DATE

NO. DATE

DATE	BY

PROFILE

REVISIONS

NO. DATE

NO. DATE