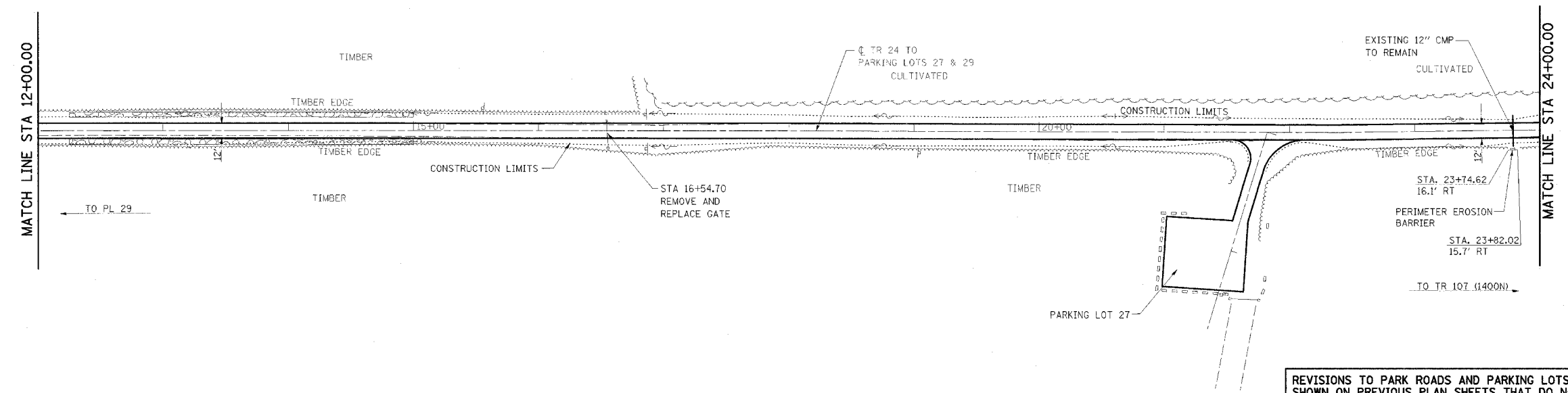
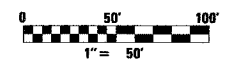


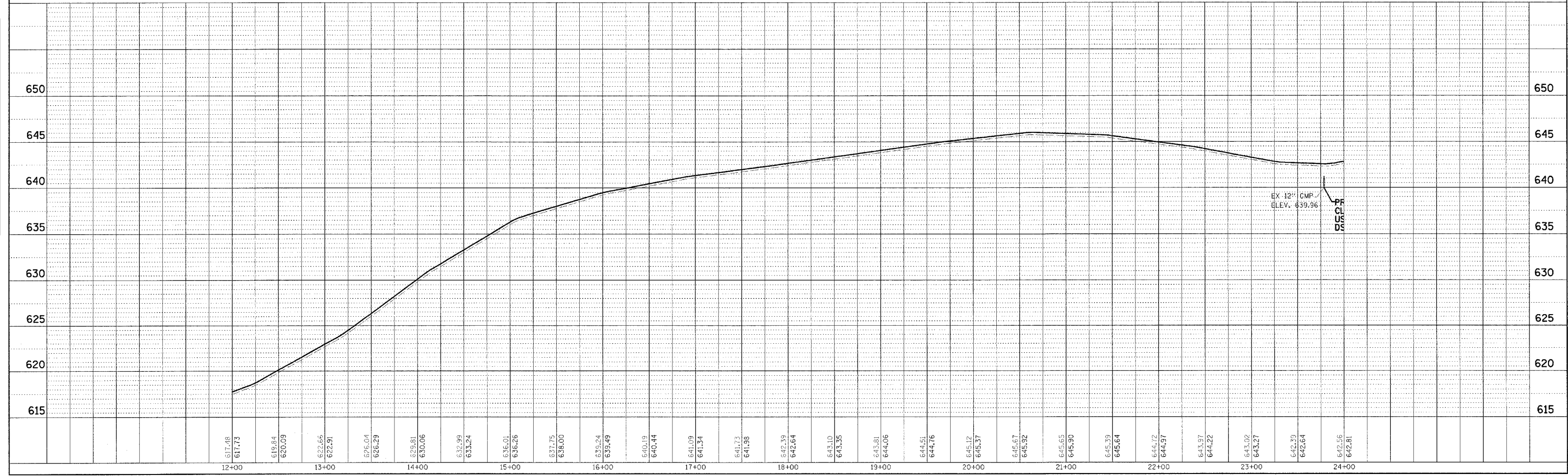
F.A. RTE.	SECTION	COUNTY	TOTAL SHEETS	SHEET NO.
*	**	***	310	135
STA. TO STA.				
CONTRACT NO. 74155				
<ul style="list-style-type: none"> * PARK ROADS ** SFWA PARK ROADS 2003-1 *** MOULTRIE AND SHELBY 				



REVISIONS TO PARK ROADS AND PARKING LOTS SHOWN ON PREVIOUS PLAN SHEETS THAT DO NOT IMPACT EROSION CONTROL ARE NOT BALLOONED OR NOTED AS REVISIONS TO ELIMINATE CLUTTER AND CROWDING ON THE EROSION CONTROL SHEETS



NOTE:
 TR 24
 STA 1+00.34 TO STA 34+54.40
 SURFACE IMPROVEMENTS,
 ADD 3" AGGREGATE



WEST OKAW FISH & WILDLIFE UNIT EROSION CONTROL PLAN AND PROFILE, TR 24 TO PARKING LOTS 27 & 29

PLAN	DATE
SURVEYED	
ALIGNED	
CHECKED	
NO.	

PROFILE	DATE
SURVEYED	
CHECKED	
NO.	