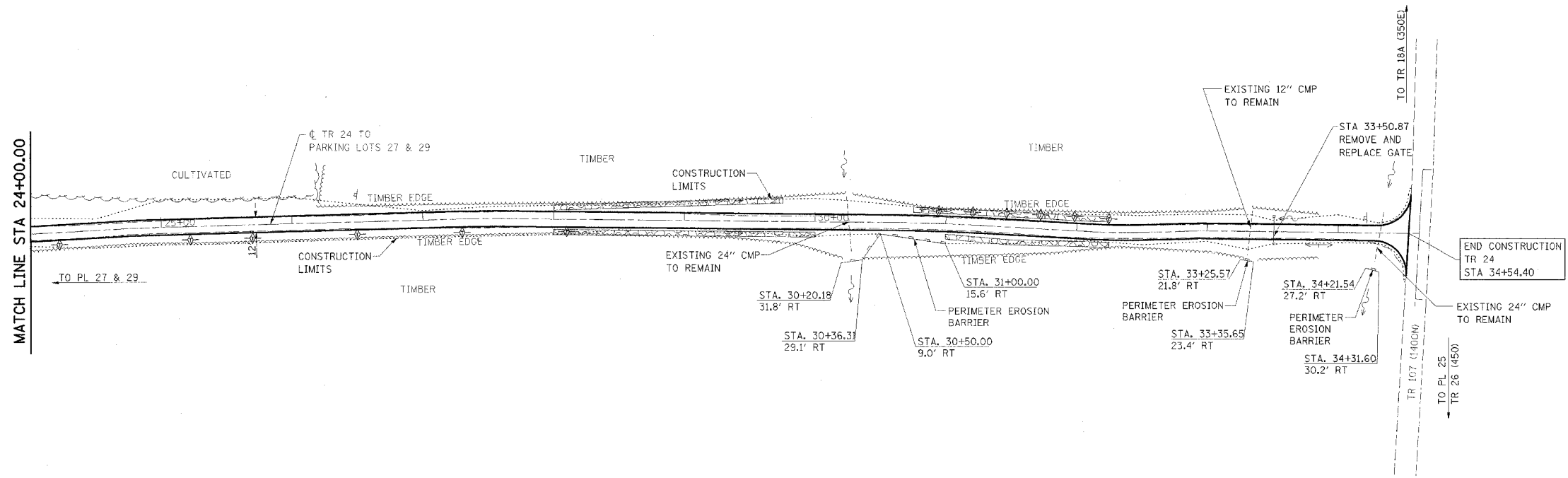


F.A. RTE.	SECTION	COUNTY	TOTAL SHEETS	SHEET NO.
*	**	***	310	136

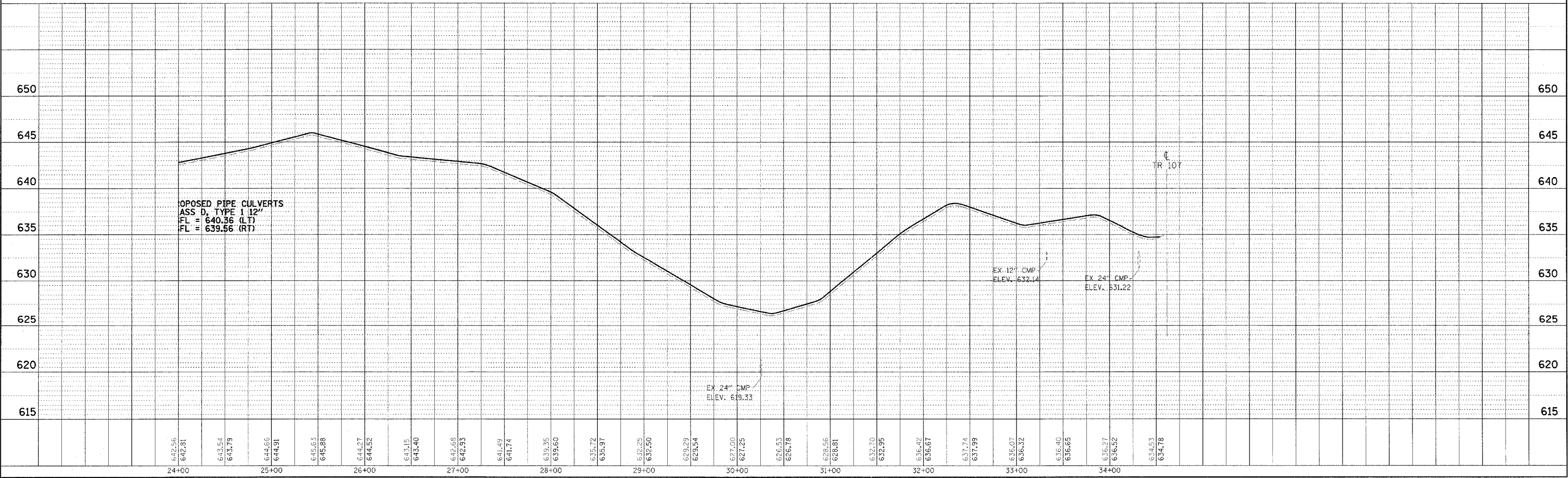
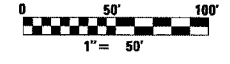
CONTRACT NO. 74155

- \* PARK ROADS
- \*\* SFWA PARK ROADS 2003-1
- \*\*\* MOULTRIE AND SHELBY



NOTE:  
TR 24  
STA 1+00.34 TO STA 34+54.40  
SURFACE IMPROVEMENTS,  
ADD 3" AGGREGATE

REVISIONS TO PARK ROADS AND PARKING LOTS SHOWN ON PREVIOUS PLAN SHEETS THAT DO NOT IMPACT EROSION CONTROL ARE NOT BALLOONED OR NOTED AS REVISIONS TO ELIMINATE CLUTTER AND CROWDING ON THE EROSION CONTROL SHEETS



WEST OKAW FISH & WILDLIFE UNIT EROSION CONTROL PLAN AND PROFILE, TR 24 TO PARKING LOTS 27 & 29

PLAN  
SURVEYED BY  
CHECKED BY  
DATE

PROFILE  
SURVEYED BY  
CHECKED BY  
DATE