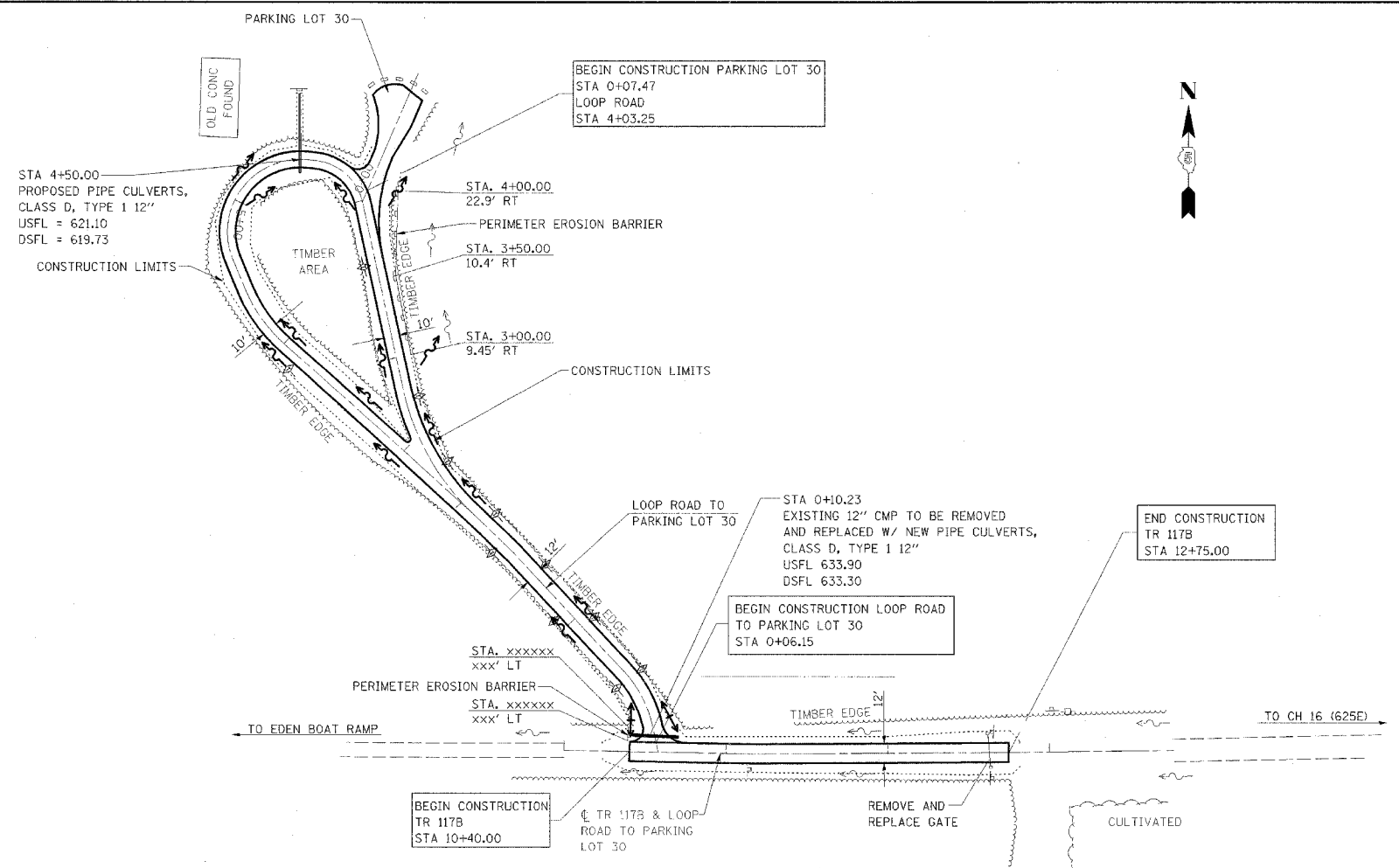


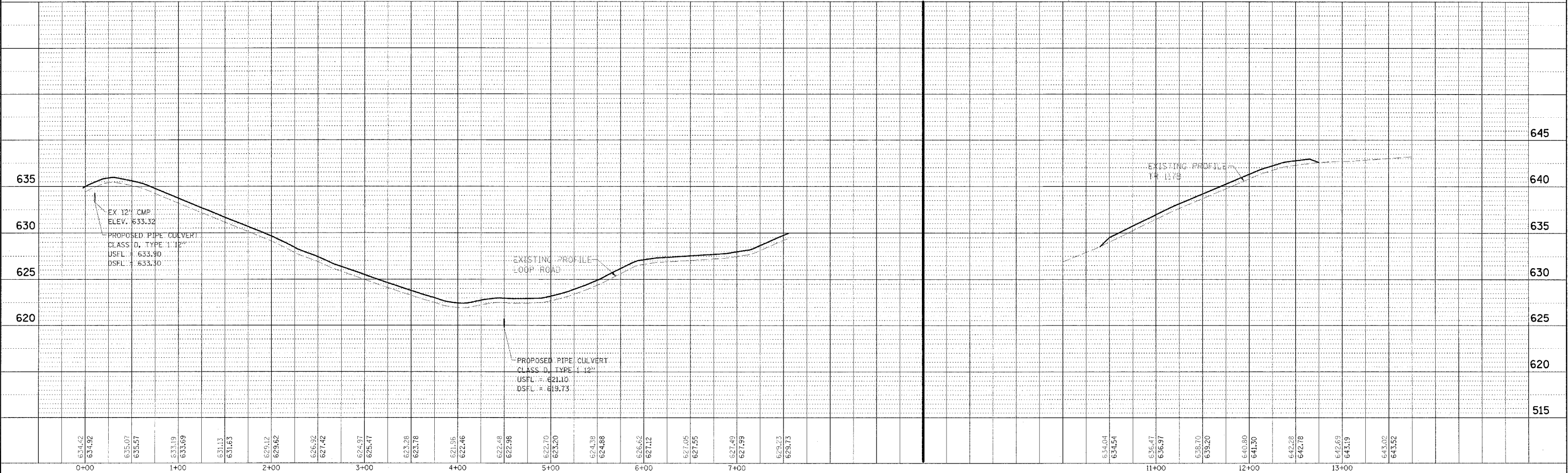
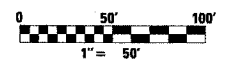
F.A. RTE.	SECTION	COUNTY	TOTAL SHEETS	SHEET NO.
*	**	***	310	137
STA. TO STA.				
CONTRACT NO. 74155				
<ul style="list-style-type: none"> * PARK ROADS ** SFWA PARK ROADS 2003-1 *** MOULTRIE AND SHELBY 				



REVISIONS TO PARK ROADS AND PARKING LOTS SHOWN ON PREVIOUS PLAN SHEETS THAT DO NOT IMPACT EROSION CONTROL ARE NOT BALLOONED OR NOTED AS REVISIONS TO ELIMINATE CLUTTER AND CROWDING ON THE EROSION CONTROL SHEETS

NOTE:
 LOOP ROAD
 STA 0+06.15 TO STA 7+56.98
 SURFACE IMPROVEMENTS,
 ADD 3" AGGREGATE

NOTE:
 TR 117B
 STA 10+40.00 TO STA 12+75.00
 SURFACE IMPROVEMENTS,
 ADD 3" AGGREGATE



WEST OKAW FISH & WILDLIFE UNIT EROSION CONTROL PLAN AND PROFILE, TR 117B AND LOOP ROAD TO PARKING LOT 30

DATE	BY	REVISION

DATE	BY	REVISION