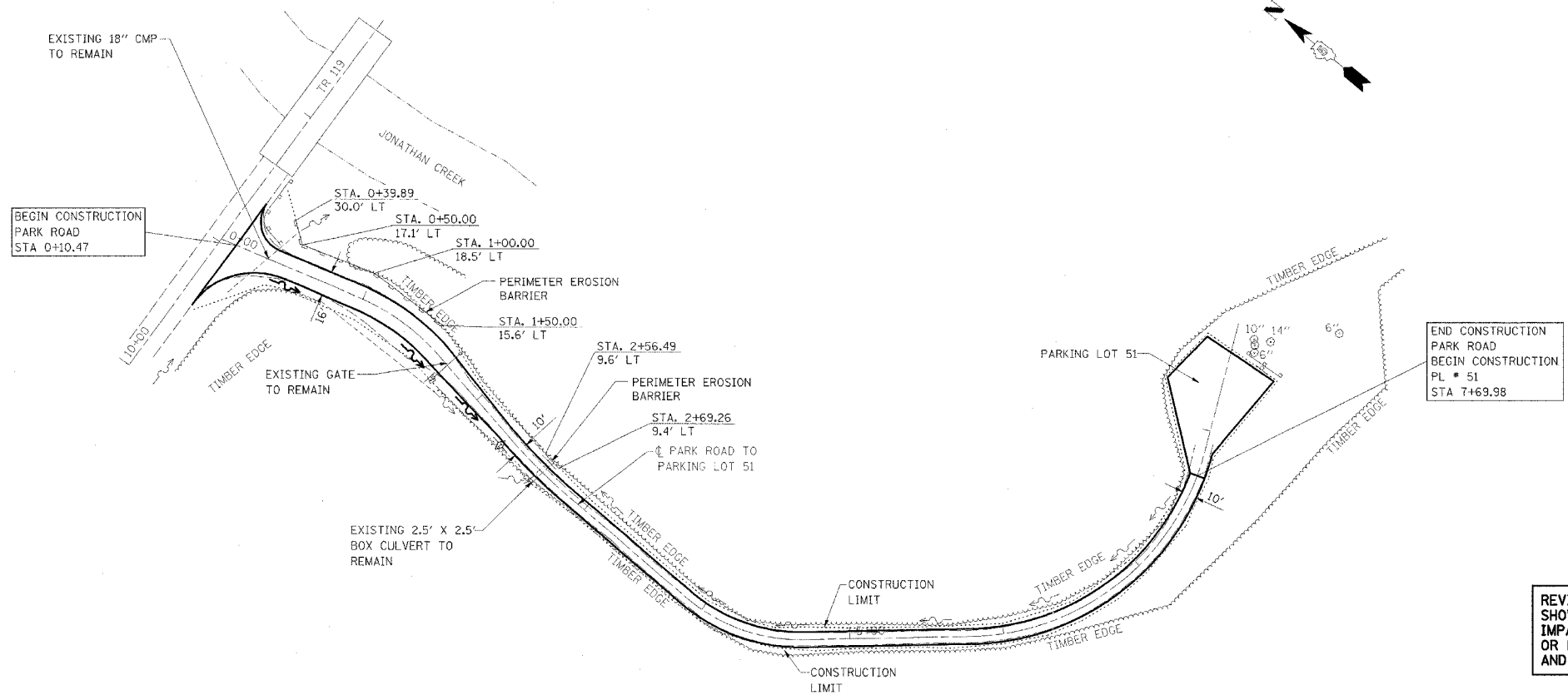
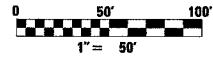


F.A. RTE.	SECTION	COUNTY	TOTAL SHEETS	SHEET NO.
*	**	***	310	138
STA. TO STA.				
CONTRACT NO. 74155				
* PARK ROADS				
** SFWA PARK ROADS 2003-1				
*** MOULTRIE AND SHELBY				



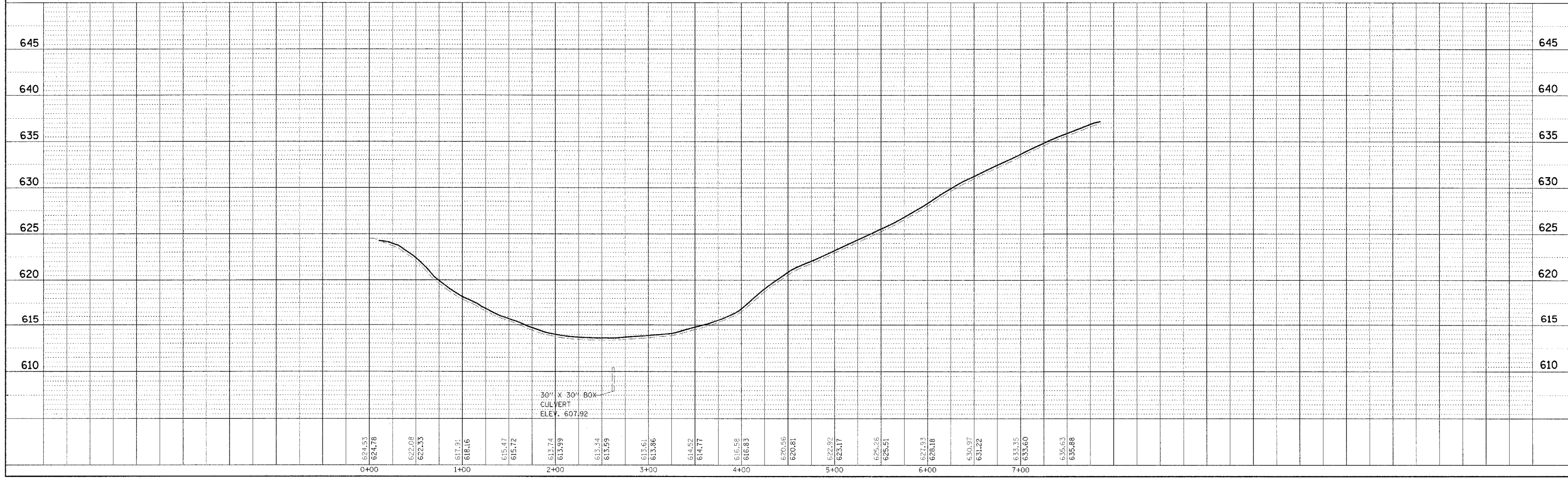
NOTE:
 PARK ROAD
 STA 0+10.47 TO STA 7+69.98
 SURFACE IMPROVEMENTS,
 ADD 3" AGGREGATE

REVISIONS TO PARK ROADS AND PARKING LOTS
 SHOWN ON PREVIOUS PLAN SHEETS THAT DO NOT
 IMPACT EROSION CONTROL ARE NOT BALLOONED
 OR NOTED AS REVISIONS TO ELIMINATE CLUTTER
 AND CROWDING ON THE EROSION CONTROL SHEETS



PLAN	DATE
BY	
NO.	

PROFILE	DATE
BY	
NO.	



KASKASKIA FISH & WILDLIFE UNIT EROSION CONTROL PLAN AND PROFILE, PARK ROAD TO PARKING LOT 51