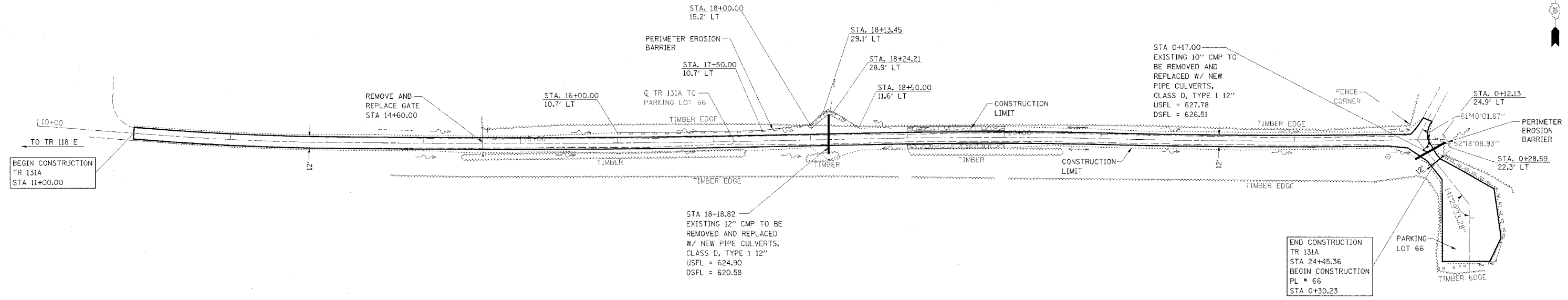


F.A. RTE.	SECTION	COUNTY	TOTAL SHEETS	SHEET NO.
*	**	***	310	147
STA. TO STA.				
CONTRACT NO. 74155				
<ul style="list-style-type: none"> <li>• PARK ROADS</li> <li>•• SFWA PARK ROADS 2003-1</li> <li>••• MOULTRIE AND SHELBY</li> </ul>				



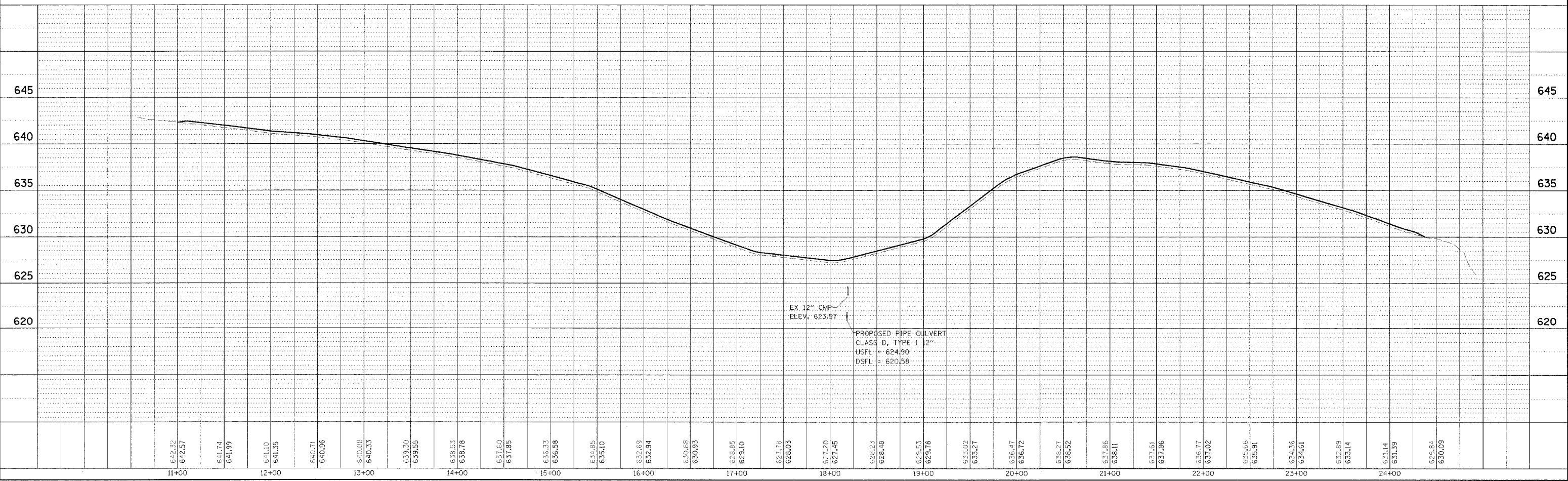
NOTE:  
 TR 131A  
 STA 11+00.00 TO STA 24+45.36  
 SURFACE IMPROVEMENTS,  
 ADD 3" AGGREGATE

REVISIONS TO PARK ROADS AND PARKING LOTS  
 SHOWN ON PREVIOUS PLAN SHEETS THAT DO NOT  
 IMPACT EROSION CONTROL ARE NOT BALLOONED  
 OR NOTED AS REVISIONS TO ELIMINATE CLUTTER  
 AND CROWDING ON THE EROSION CONTROL SHEETS



PLAN	DATE
BY	
NO.	
NO.	
NO.	
NO.	
NO.	
NO.	
NO.	
NO.	

PROFILE	DATE
BY	
NO.	
NO.	
NO.	
NO.	
NO.	
NO.	
NO.	
NO.	



KASKASKIA FISH & WILDLIFE UNIT EROSION CONTROL PLAN AND PROFILE, TR 131A TO PARKING LOT 66