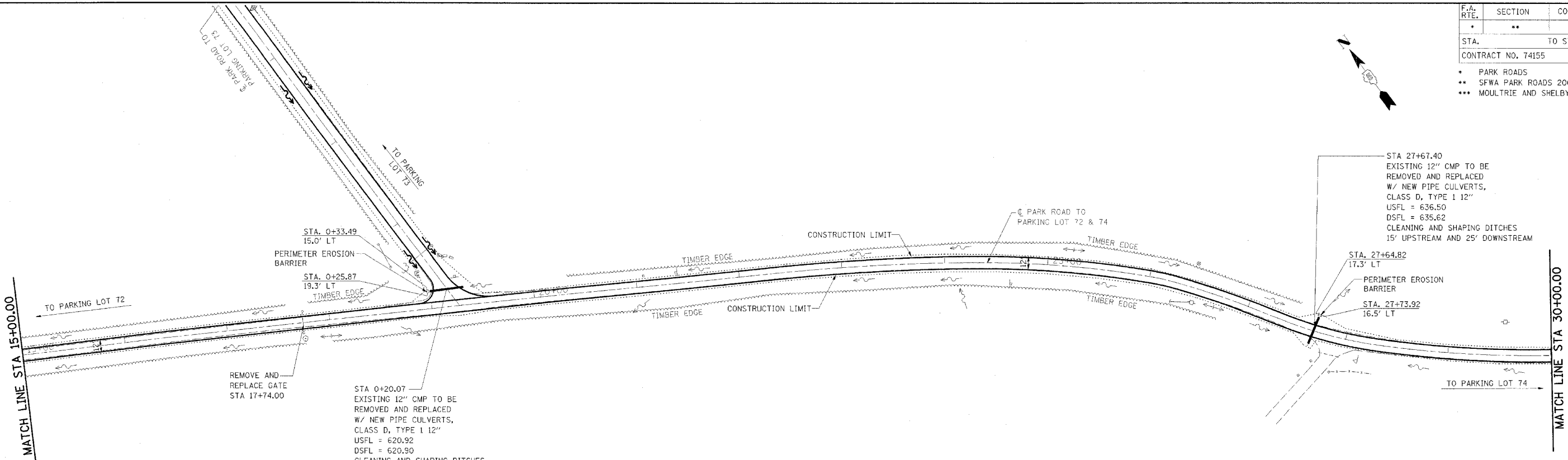


F.A. RTE.	SECTION	COUNTY	TOTAL SHEETS	SHEET NO.
*	**	***	310	155
STA. TO STA.				
CONTRACT NO. 74155				
<ul style="list-style-type: none"> <li>* PARK ROADS</li> <li>** SFWA PARK ROADS 2003-1</li> <li>*** MOULTRIE AND SHELBY</li> </ul>				

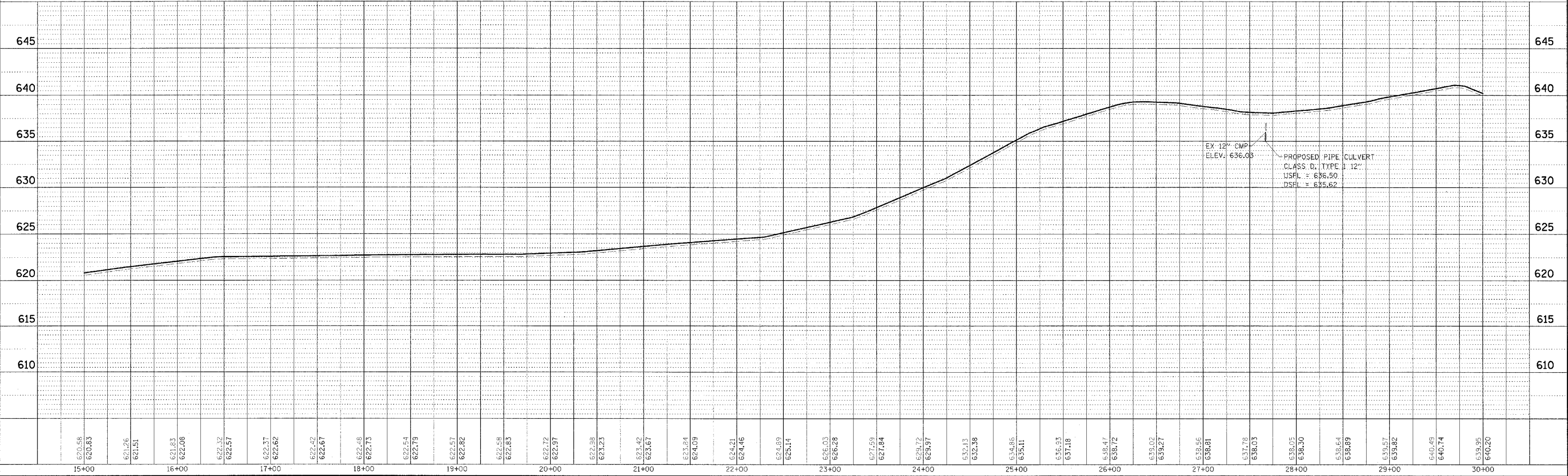
DATE	
BY	
PROJECT	
DESIGNED	
CHECKED	
DATE	
NO.	

DATE	
BY	
PROJECT	
DESIGNED	
CHECKED	
DATE	
NO.	



NOTE:  
 PARK ROAD  
 STA 0+00.00 TO STA 41+68.57  
 SCARIFY ROAD AND PARKING  
 LOT 72, ADD 3" AGGREGATE  
 AND ADD A-2 TREATMENT

REVISIONS TO PARK ROADS AND PARKING LOTS  
 SHOWN ON PREVIOUS PLAN SHEETS THAT DO NOT  
 IMPACT EROSION CONTROL ARE NOT BALLOONED  
 OR NOTED AS REVISIONS TO ELIMINATE CLUTTER  
 AND CROWDING ON THE EROSION CONTROL SHEETS



KASKASKIA FISH & WILDLIFE UNIT EROSION CONTROL PLAN AND PROFILE, PARK ROAD TO PARKING LOTS 72 & 74